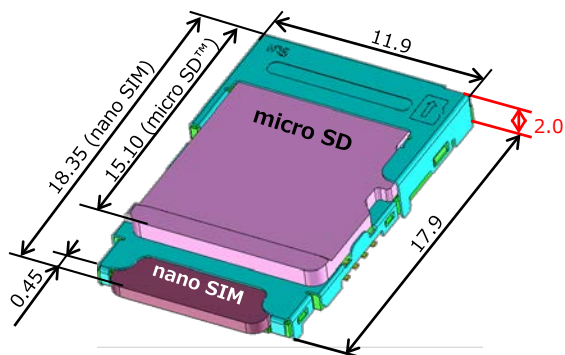


Features

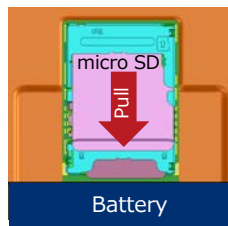
- 1 Combo socket for nano SIM & micro SD™ cards produces a space saving design
(Top slot : micro SD card, bottom slot : nano SIM card)
- 2 User friendly card removal design with top and bottom slot
- 3 Easy inspection with exposed contact design
- 4 User-friendly reverse card insertion prevention
- 5 Card detection switch for microSD and nano SIM cards

Dimensions

Unit : mm



User friendly card removal design

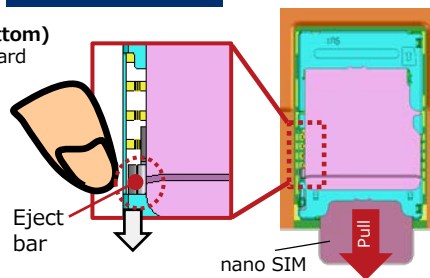


micro SD™ removal (Top)
To eject micro SD card,
simply pull out micro SD card

**No need to remove
battery pack**

nano SIM removal (Bottom)
Easy to eject nano SIM card
by simply sliding
eject bar with a finger

**No need to remove
upper card**



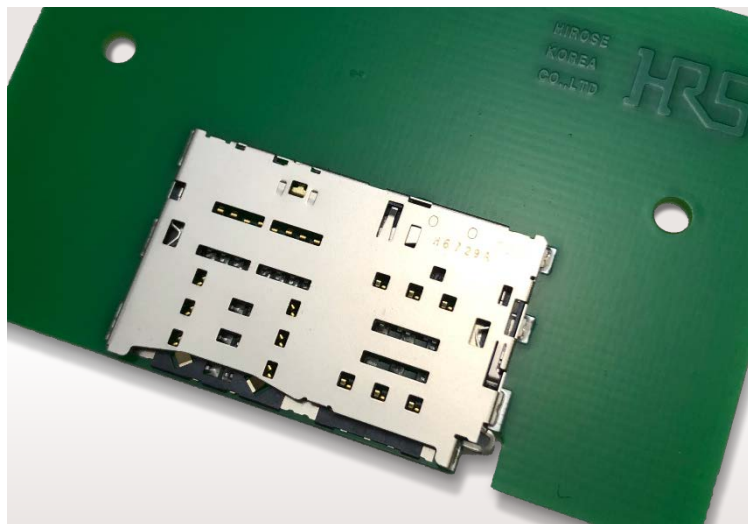
Specifications

Contact Resistance	100mΩ Max.
Withstanding Voltage	500V AC for 1 minute
Mold Resistance	1,000MΩ Min. (500V DC)
Rated Current	0.5A
Rated Voltage	10V AC
Operating Temperature	-30℃ to +85℃
Mating cycles	10,000 times (micro SD) 5,000 times (nano Sim)

• RoHS compliant, Halogen-free product*

*This product satisfies halogen free requirements defined as 900ppm maximum chlorine, 900ppm maximum bromine, and 1500ppm maximum total of chlorine and bromine

※ Please contact Hirose's sales representative prior to adopting the products to in-vehicle devices.



Features

- 1 Easy to remove tray with eject pin
- 2 3 in 2 hybrid design provides various usage patterns.
- 3 Buckling prevention eliminates contact damage
- 4 Enhanced durability with ample eject bar thickness (40N)
- 5 Card detection switch

Dual card use design

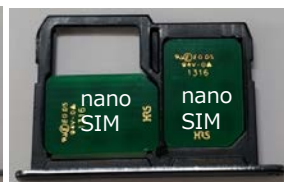
Combo Type

micro SD™ + nano SIM



Dual Sim card Type

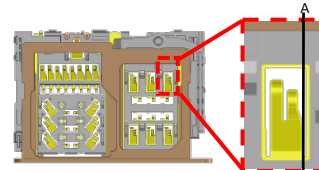
nano SIM × 2



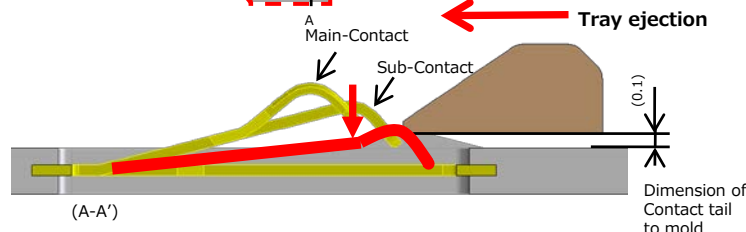
⇒ Can be use in 2 cards patterns

*Note : Tray is not included and should be prepared by customers.

Buckling prevention design



Dual-contact design allows the longer contact to reach tray first, and then the shorter contact smoothly moves along with it. When the tray passes on the main contact, there will be no contact buckling.



Specifications

Contact Resistance	100mΩ Max.
Withstanding Voltage	500V AC for 1 minute
Mold Resistance	1000MΩ Min. (500V DC)
Rated Current	0.5A
Rated Voltage	10V AC
Operating Temperature	-30℃ to +85℃
Mating cycles	3,000 times

• RoHS compliant, Halogen-free product*

*This product satisfies halogen free requirements defined as 900ppm maximum chlorine, 900ppm maximum bromine, and 1500ppm maximum total of chlorine and bromine

※ Please contact Hirose's sales representative prior to adopting the products to in-vehicle devices.