

# E3K WallySci Bio-Sensing Platform

## E3K-COMBO

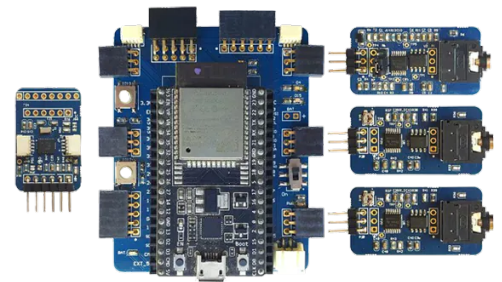
### Product Overview

01-13-2023

For the most up-to-date information, visit [www.mouser.com](http://www.mouser.com) or the supplier's website.

## Description

Crowd Supply WallySci E3K Bio-Sensing Platform provides an affordable, fully open-source, wireless framework for an intuitive understanding of bio-signals originated from the human heart, muscle, and brain. This platform features various modules, including Wi-Fi and BLE-enabled Data Communication and Processing Unit (DCPU), Electromyography (EMG) sensor, Electrocardiography (ECG) sensor, and Electroencephalography (EEG) sensor. This bio-sensing platform also includes a 9-DoF Inertial Measurement Unit (IMU) to capture motion. Combined with the firmware and data collection software, these modules enable a reliable and high data acquisition rate. The WallySci E3K bio-sensing platform GUI allows configuring each channel and collecting data without requiring coding. The modularity feature of the platform allows the E3K to be configured into a bio-signal acquisition tool.

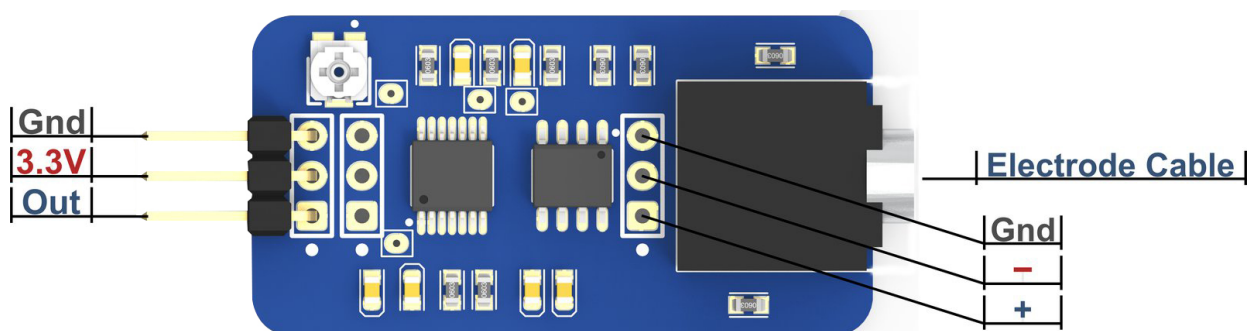


The WallySci E3K bio-sensing platform supports widely used communication protocols like UART, I<sup>2</sup>C, and SPI and provides ten GPIO pins, six analog pins, and two DACs. All the ports are based on Commercial Off-The-Shelf (COTS) connectors pre-soldered on the boards. This platform is ideal for developing healthcare or wearable device.

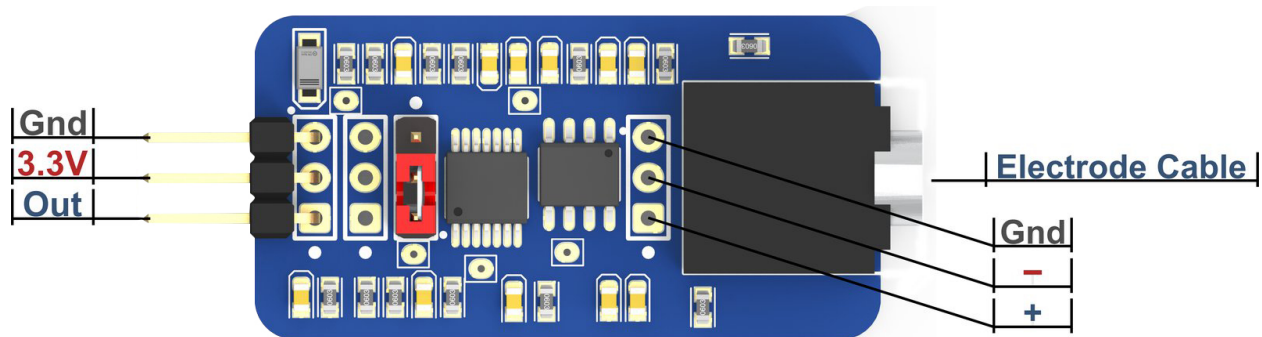
## Features

- Modules:
  - Wi-Fi and BLE enabled Data Communication and Processing Unit (DCPU)
  - Electromyography (EMG) sensor to capture muscle movements
  - Electrocardiography (ECG) sensor to capture heart signals
  - Electroencephalography (EEG) sensor to capture brain activity
  - 9-DoF Inertial Measurement Unit (IMU) to capture motion
- Interactive Graphical User Interface (GUI)
- Communication protocols supported:
  - UART, I<sup>2</sup>C, and SPI
  - 10x GPIO pins
  - 6x analog pins
  - 2x DACs
- Impressive Signal-to-Noise Ratio (SNR)

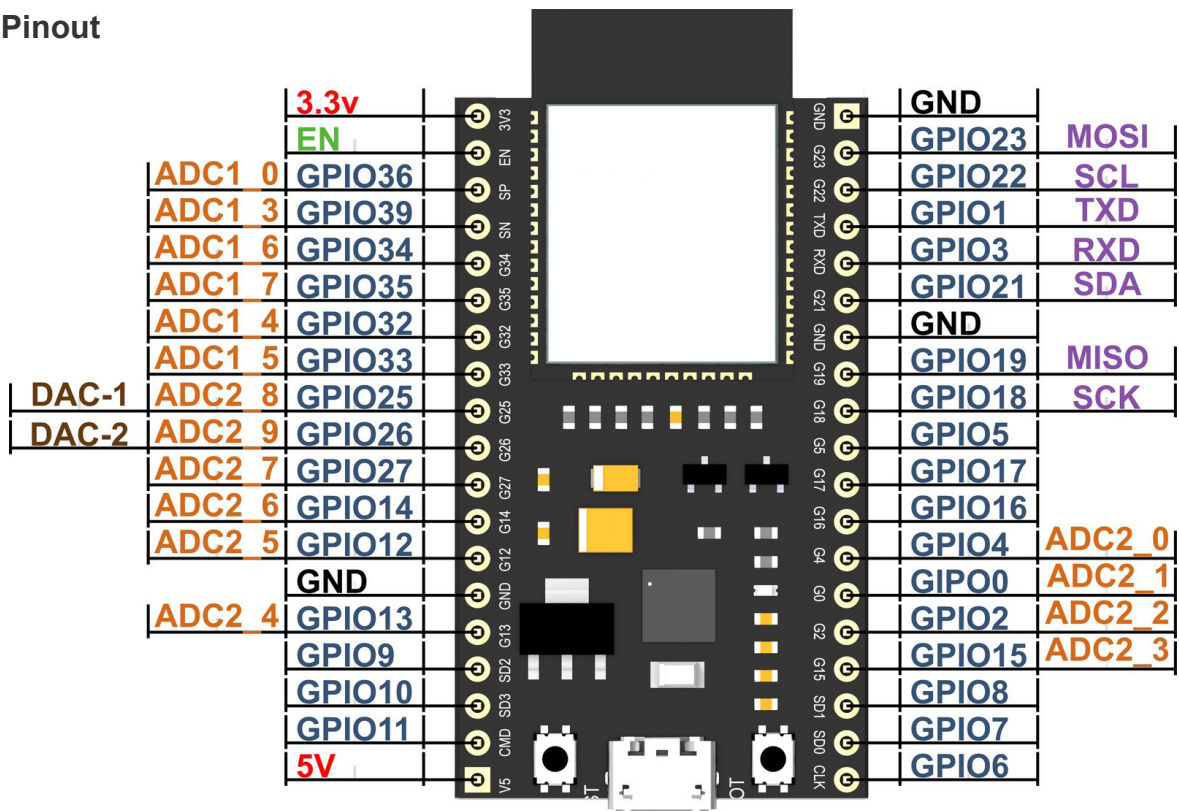
## DCPU Pinout



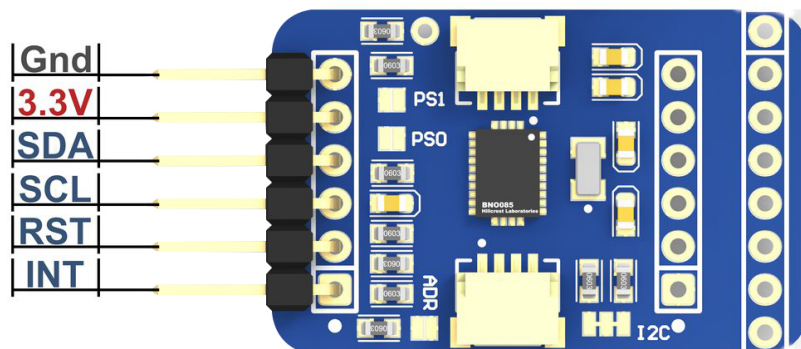
## EMG Biosensor Pinout



## ESP32 Pinout



## IMU Pinout



## Mouser Part Number

[View Part](#)

To learn more, visit

<https://www.mouser.com/new/crowd-supply/crowd-supply-wallysci-e3k-biosensing-platform/>