

General Description:

This Evaluation Board was developed for ROHM's family of DC Brushed Motor Driver: BD62130AEFJ (3A), BD62120AEFJ (2A) and BD62110AEFJ (1A).

BD621x0AEFJ are built-in 1 channel H bridge motor drivers for DC brushed motors. This family of driver can drive high efficiency by a PWM signal directly to input pins. There are built in protection circuits in this IC. Each protection circuit operation contributes to set high reliability.

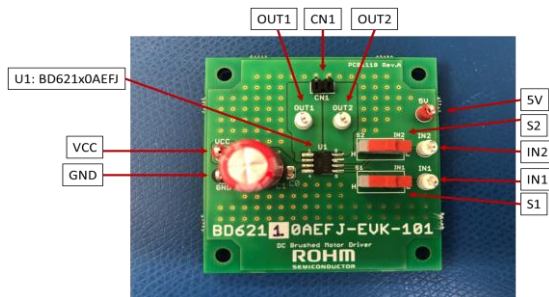
Features

- ❑ Switches for manual control of IN1 and IN2 input pins
- ❑ Test points for connecting MCU for PWM control to IN1 and IN2
- ❑ Connector pins for easy connection to DC Brushed Motor
- ❑ Compact size for design prototyping

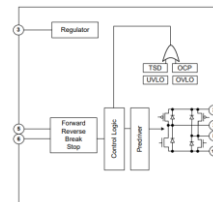
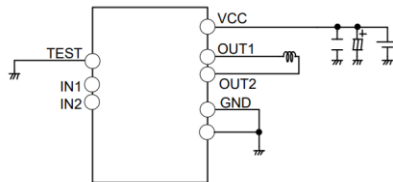
Applications

- ❑ Small appliances (Vacuum cleaners), Factory Automation, Robotics, Point of Sales (POS) machines, Gaming Machines, Scanners, Printers (Multi-function Printer, Laser Printer, Inkjet Printer, Photo Printer, FAX, Mini Printer), Plain Paper Copier (PPC) Automotive LED Interior Lamp (Air Conditioner Lamp, Interior Lamp, Cluster Light etc.) , and any application that requires motor drivers for DC Brushed Motor.

Evaluation Board Picture



Circuit Diagram



Product Page:

[BD62110AEFJ](#)

[BD62120AEFJ](#)

[BD62130AEFJ](#)

[EVK User's Guide](#)