

Optimum for Applications Requiring Wide Range Distance Sensing.



3D TOF Sensor Module



Interfering light immunity

Ambient light immunity equivalent to 100,000lx
It's powerful ambient light immunity ensures stable detection performance free from saturation even in bright places.

High precision

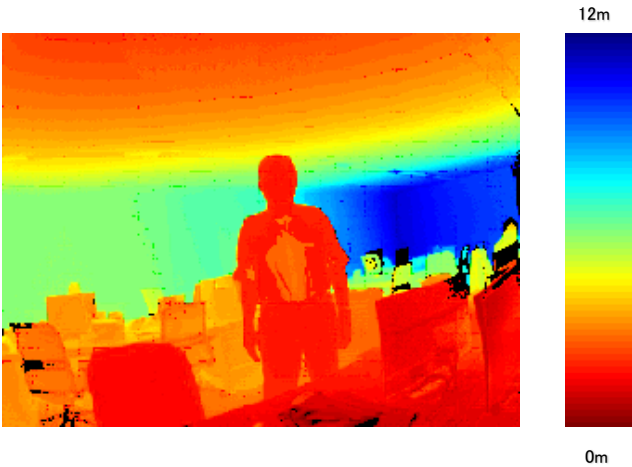
±2%(2m)
Achieves high output accuracy for compensated signals.

Long life

Long life equivalent to 5 years under continuous driving. According to OMRON's research in March, 2020
Long life thanks to OMRON's unique circuit design and heat emission design.

Technology Overview

	Specification
Pixel number	320 x 240
Angle of view	70° x 90°
Detection distance	0.5m ~ 4m
fps	10fps (Normal mode)
Light source	LED (emission wavelength 940nm)
Ambient light immunity	Up to100,000 lx
Power-supply voltage	DC24V
Operating temperature	0°C ~ 50°C
Preservation temperature	-20°C ~ +60°C



Application

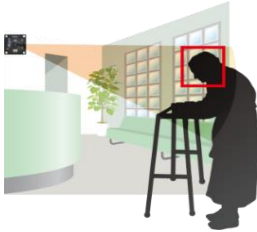
Robot



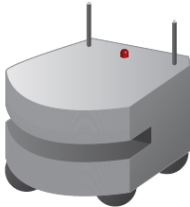
Security



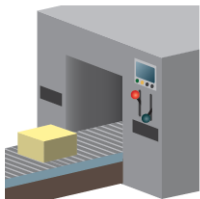
Nursing system



AMR



Material handling



Contact