

# EVAL-ADPD410x-ARDZ Breakout Boards

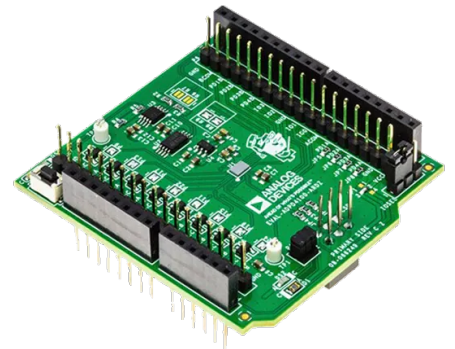
## Product Overview

10/25/2022

For the most up-to-date information, visit [www.mouser.com](http://www.mouser.com) or the supplier's website.

## Description

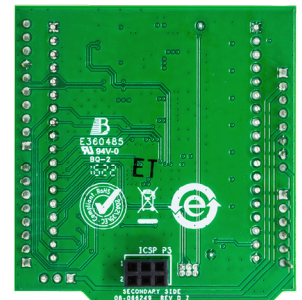
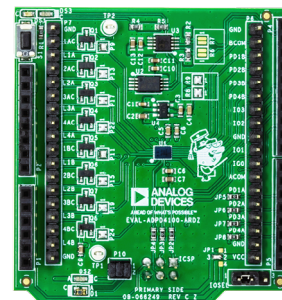
Analog Devices Inc. EVAL-ADPD410x-ARDZ Breakout Boards are simple Arduino form-factor breakout boards for developing ADPD4100 and ADPD4101 applications. The ADPD4101 is interfaced through I2C and the ADPD4100 is interfaced through SPI. These boards are highly versatile, multimodal sensor front ends, stimulating up to eight LEDs and measuring the return signal on up to eight separate current inputs.



The EVAL-ADPD410x-ARDZ Breakout Boards can also be adapted for other evaluation platforms including the EVAL-ADPD4100Z-PPG, optimized for photoplethysmograph applications, and the reference design CN0503, optimized for optical liquid analysis applications (colorimetry, turbidity, fluorescence). This helps in meeting specific application requirements, as well as for the ground-up development of different applications.

## Features

- Onboard LED for quick and easy bring up
- Breakaway Prototyping Board for customized application needs
- 8-Channels of LEDs and photodiodes connections
- Standard 0.1-inch headers



## Kit Contents

- EVAL-ADPD410x-ARDZ
- Breakaway Prototyping Board

## Required Equipment

- EVAL-ADICUP3029
- EVAL-ADPD4100-ARDZ or EVAL-ADPD4101-ARDZ
- Micro USB to USB cable
- PC or laptop with a USB port

## Mouser Part Numbers

[View All Parts](#)

To learn more, visit <https://www.mouser.com/new/analog-devices/adi-adpd410x-ardz-boards/>