

Amphenol LTW

RBL Connector

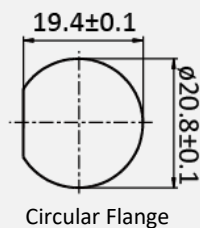
Push Lock
With Latch

- Intuitive mating with audible feedback
- Power, data / signal, hybrid
- IP67 mated, IP68 mated or unmated
- Fool-proof design



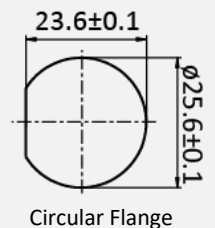
Middle Size

2 ~ 9 Pins



Large Size

2 ~ 18 Pins



Unrivalled InterConnects for Harsh Environments

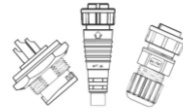
About ALTW

**3**

Production Sites
(Taiwan, China, Mexico)

**30+**

Market Applications

**90,000+**

Products

Since 1993, Amphenol LTW Technology “ALTW” lives and breathes to create, innovate, design and produce “***unrivaled interconnects for harsh environments***”. With over 300 worldwide patents, not only does ALTW offer the broadest and widest range of rugged interconnects in the industry but also customization with the mission of “Customer Satisfaction First”. Undoubtedly, ALTW is the leader in rugged interconnects, highly recognized for its uncompromising quality, short lead time, fast and tailored service and its very competitive pricing.

Regardless of the challenging environments that your products will be subject to; there is a very good chance that you will find what you are looking for with ALTW.

Unrivaled InterConnects for Harsh Environments

RBL Connector

Amphenol LTW RBL series connectors featuring a push lock with latch mechanism for intuitive mating with audible and tactile feedback. With this quick lock design, RBL series contributes time-saving installations and assures a secure connection.

The RBL Connectors are IP68-rated waterproof circular connectors with current ratings of 5A, 10A, or 20A. With high quality UV and fire-resistant plastics, our RBL connectors offer an operating temperature range from -40°C to +105°C and durability of 250 cycles, making them an ideal solution for solar power, outdoor lighting systems, heavy vehicles and other rugged applications.

- ❖ Push lock with latch & fool-proof design
- ❖ Flammability UL 94V-0
- ❖ UL / CE certified
- ❖ RoHS & REACH compliant



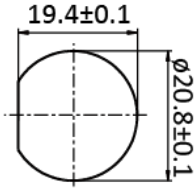
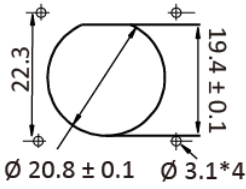
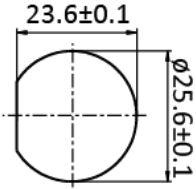
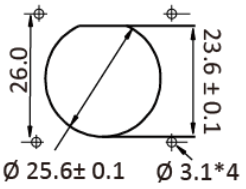
Product Range Overview

SUB SERIES	Middle Size	Large Size
Mating Style	Push Lock With Latch	Push Lock With Latch
Plastic Version	✓	✓
Metal Version	-	-
No. of Contacts	2 ~ 9	2 ~ 18
Plating of Contacts	Gold Plated	Gold Plated
Operating Voltage (AC/DC)	300V	300V
Nominal Current	5A, 10A, 10A+5A	5A, 20A, 20A+5A
Operating Temperature	Receptacle With Cable: -40°C ~ 105°C Overmolded With Cable: -40°C ~ 105°C Field Serviceable/Installable: -40°C ~ 105°C	
Fasten Style of Nut	Rear	Rear
Receptacle	-	-
Receptacle with Cable	✓	✓
Field Serviceable/Installable	✓	✓
Overmolded with Cable	✓	✓
Accessories	✓	✓
Mating Cycles (Pin Contact)	250	250
IP Rating	IP67, IP68	IP67, IP68
Salt Spray (Connector, Mated)	48h	48h
UV Resistant	✓	✓
Flammability Rating	UL94V-0	UL94V-0
Vibration Resistant	Frequency Range 10 ~ 55Hz / Amplitude 1.52mm	
RoHS Compliant	✓	✓
REACH Compliant	✓	✓
Certifications	UL1977	-
Applicable Wire Gauge	24 ~ 16AWG	20 ~ 12AWG

Served Markets & Applications

Market	Application	
LED Lighting	<ul style="list-style-type: none"> • Architectural Lighting • Residential, Medical, and Commercial Lighting • Street, Parking, Park, and Tunnel Lighting • Entertainment and Signage Lighting 	<ul style="list-style-type: none"> • Horticulture, Grow, & Warehouse Lighting • Mass Transportation and Vehicles • Marine Vessel and Submersible Lighting • Appliances and Equipment Lighting
Marine	<ul style="list-style-type: none"> • Navigation System: Auto-Pilot, GPS, Radar, Auto-Pilot • Communication: AIS, SCS • Instrumentation & Monitoring: MFD, CCTV, Sensors 	<ul style="list-style-type: none"> • Power Distribution: Appliances, Charging, HVAC • Entertainment: Video, Audio, Decorative • Motors: Outboard, Inboard, Pump, Actuator, Trolling
Broadband Wireless Access	<ul style="list-style-type: none"> • Access Point: LTE, 5G • Cellular, Subscriber, and Mobile Station • Wireless Router and Mobile Backhaul 	<ul style="list-style-type: none"> • Power Supply and Distribution System • Other Communication Equipment
Industrial Automation	<ul style="list-style-type: none"> • Power Supply and Distribution • Autonomous Robots, Forklifts, Power Tools 	
Renewable Energy	<ul style="list-style-type: none"> • Photo Voltaic (PV), Concentrated Solar Power (CSP) • Power Distribution and Control: Inverter, MLPE, ICS • Device Communication and Tracker 	<ul style="list-style-type: none"> • Wind Turbine and Tidal Power Generation • Energy Storage and Portable Energy
Heavy Equipment	<ul style="list-style-type: none"> • Navigation System: GPS, Lidar, Radar • Instrumentation, Control, and Diagnostic Systems • Monitoring: Display, Camera, Imaging • Communication and Electronic Toll Systems 	<ul style="list-style-type: none"> • Safety System: Sensor, ADAS, Telematics & Tracking • Power Distribution: Charging, Lighting, Equipment
Autometer	<ul style="list-style-type: none"> • Monitoring: Sewage 	
Test Equipment	<ul style="list-style-type: none"> • Measuring Device: Air, Humidity, Light, Sound, Water, Image, Weight, Height • Detectors: Gas, Fire, Leak, Motion, Heat • Monitoring: Seismic (earthquake), Climatic 	<ul style="list-style-type: none"> • Weighing: Weigh, In-motion • Geodetic System: Surveying, Laser Marking, Boroscope
Hybrid Electric Vehicles	<ul style="list-style-type: none"> • Motor Module: Scooter, Hoover board, Wheelchair • Safety System: Speed, Brake, Throttle • Lighting: Interior and Exterior LED 	<ul style="list-style-type: none"> • Power System: Charging, Battery, Plug & Inlet/ Outlet
Railway Mass Transit	<ul style="list-style-type: none"> • Navigation: GPS, Radar, Lidar, Ultrasonic • HVAC • Infotainment: Display, Sound, Broadcasting, Monitor 	<ul style="list-style-type: none"> • Sensors: Speedometer, Fuel, Cleaning • Lighting: Interior and Exterior
Transporation	<ul style="list-style-type: none"> • Monitoring: Display, CCTV, Lidar, Surveillance Cam • Communication: Wifi, Router, Fleet Management • Navigation: GPS, Radar 	<ul style="list-style-type: none"> • Power: Charger, Outlet, Inlet • Peripherals: Speaker, Electronic seats, Winches
Medical Equipment	<ul style="list-style-type: none"> • Patient Care: Electric Beds, Wheelchair Lift & Stair, Rehabilitation System, Mobile Carts 	<ul style="list-style-type: none"> • Diagnostic: MRI, CT Scan, Ultrasound, X-ray
Automotive Diagnostics	<ul style="list-style-type: none"> • Auto-crash Detection & Notification System • Vehicle Tracking and Roadside Assistance System 	<ul style="list-style-type: none"> • Remote Diagnostics
UAV	<ul style="list-style-type: none"> • Drone: Commercial, Consumer, & Military 	
Lifts & Materials Handling	<ul style="list-style-type: none"> • Forklift, Industrial Lift, Material Handling 	

Panel Cut-Out & Accessory


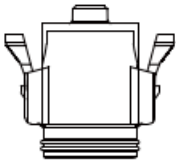
<div>(unit: mm)</div> <div>Middle Size</div>	<div>✓ Push Lock With Latch</div> <div>Circular Flange</div> <div></div> <div>Square Flange</div> <div></div>
<div>Large Size</div>	<div>✓ Push Lock With Latch</div> <div>Circular Flange</div> <div></div> <div>Square Flange</div> <div></div>

Accessory

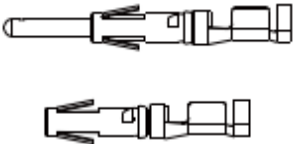
(click the image to find more product information)

Waterproof Cap

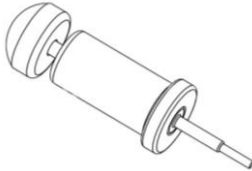
- ✓ Cap only
- ✓ With fish line



Terminal



Extraction Tool





Amphenol LTW

Contact Us

Luc Kan | Sales & Marketing | luc@ltw-tech.com

Customer Service | sales@ltw-tech.com

Follow Us



Unrivaled InterConnects for Harsh Environments