



---

# ANR018 GNSS I2C COMMUNICATION

---

VERSION 1.2

FEBRUARY 11, 2022

## Revision history

Manual version	Notes	Date
1.0	<ul style="list-style-type: none"><li>• Initial version</li></ul>	June 2020
1.1	<ul style="list-style-type: none"><li>• Figure 7 and 8 updated</li></ul>	July 2020
1.2	<ul style="list-style-type: none"><li>• Updated Chapter 3</li></ul>	June 2021

## Abbreviations

Abbreviation	Description
ASCII	American Standard Code for Information Interchange
CTS	Clear to send
I <sup>2</sup> C	Inter-IC bus
GND	Ground
GNSS	Global Navigation Satellite System
HIGH	Digital (logic) high level
IC	Integrated Circuit
IDC	Insulation Displacement Contact
LOW	Digital (logic) low level
μC	Microcontroller
NMEA	National Marine Electronics Association
OSP	One Socket Protocol
PC	Personal Computer
RTS	Request to send
SCL	Serial Clock
SDA	Serial Data
USB	Universal Serial Bus

# Contents

<b>1</b>	<b>Introduction</b>	<b>5</b>
<b>2</b>	<b>I<sup>2</sup>C Digital interface</b>	<b>6</b>
2.1	General characteristics . . . . .	6
2.2	SDA and SCL logic levels . . . . .	6
2.3	Communication phase . . . . .	6
2.3.1	Idle state . . . . .	6
2.3.2	START(S) and STOP(P) condition . . . . .	7
2.3.3	Data validity . . . . .	7
2.3.4	Data format . . . . .	8
2.3.5	Acknowledge and No-Acknowledge . . . . .	8
2.3.6	Addressing the GNSS module . . . . .	8
2.3.7	GNSS communication protocol . . . . .	9
2.4	I <sup>2</sup> C timing parameters . . . . .	9
<b>3</b>	<b>Hardware Setup</b>	<b>10</b>
3.1	Hardware Setup - 1.8V . . . . .	10
3.2	Evaluation Board Modification - 1.8V . . . . .	11
3.3	Hardware Setup - Erinome-I . . . . .	13
3.4	Evaluation Board Modification - Erinome-I . . . . .	14
<b>4</b>	<b>Application Example</b>	<b>16</b>
4.1	Total Phase Aardvark host adapter . . . . .	16
4.2	Generic Microcontroller . . . . .	23
<b>5</b>	<b>Troubleshooting</b>	<b>25</b>
<b>6</b>	<b>Important notes</b>	<b>26</b>
6.1	General customer responsibility . . . . .	26
6.2	Customer responsibility related to specific, in particular safety-relevant applications . . . . .	26
6.3	Best care and attention . . . . .	26
6.4	Customer support for product specifications . . . . .	26
6.5	Product improvements . . . . .	27
6.6	Product life cycle . . . . .	27
6.7	Property rights . . . . .	27
6.8	General terms and conditions . . . . .	27
<b>7</b>	<b>Legal notice</b>	<b>28</b>
7.1	Exclusion of liability . . . . .	28
7.2	Suitability in customer applications . . . . .	28
7.3	Trademarks . . . . .	28
7.4	Usage restriction . . . . .	28
<b>8</b>	<b>License terms</b>	<b>30</b>
8.1	Limited license . . . . .	30
8.2	Usage and obligations . . . . .	30
8.3	Ownership . . . . .	31
8.4	Firmware update(s) . . . . .	31
8.5	Disclaimer of warranty . . . . .	31

8.6	Limitation of liability . . . . .	31
8.7	Applicable law and jurisdiction . . . . .	32
8.8	Severability clause . . . . .	32
8.9	Miscellaneous . . . . .	32

# 1 Introduction

This application note aims to support the use of the I<sup>2</sup>C interface on Elara and Erinome GNSS modules. I<sup>2</sup>C interface is available in these modules as an alternative to UART. The GNSS module functions as Multi-Master.

The first part of the document describes the basics of I<sup>2</sup>C communication. This technical background information helps to understand the rest of the document. It includes understanding the different roles and phases in the communication, addressing of the bus subscriber and data structure.

The recommended I<sup>2</sup>C communication hardware setup is described in detail in Chapter 3. The same setup can be used for Elara-I, Elara-II, and Erinome-II modules, operating with 1.8 V power supply. A slightly different setup is required for Erinome-I, operating with 3.3 V power supply.

After some simple modifications, the evaluation board can be used to test I<sup>2</sup>C communication with the GNSS module. The modifications are also explained in detail in chapter 3.

Chapter 4 presents a specific application example, where the GNSS evaluation board communicates via I<sup>2</sup>C with the Aardvark I2C/SPI host adapter from Total Phase <sup>1</sup>. This chapter guides the user through the software and hardware configuration to successfully establish I<sup>2</sup>C communication with the GNSS module. The application note is concluded by a troubleshooting section which helps the user to debug the process.

Module	Article number	Power supply	Input logic level	Output logic level
Elara-I	2613011037000	1.8V	3.3V	1.8V
Elara-II	2613021137000	1.8V	3.3V	1.8V
Erinome-I	2614011037000	3.3V	3.3V	1.8V
Erinome-II	2614021137000	1.8V	3.3V	1.8V

Table 1: GNSS module power supply and logic levels

<sup>1</sup> <https://www.totalphase.com/products/aardvark-i2cspi/>.

## 2 I<sup>2</sup>C Digital interface

The GNSS module supports standard I<sup>2</sup>C (Inter-IC) bus interface as an alternative to the recommended UART interface. Further information of the I<sup>2</sup>C interface can be found at <https://www.nxp.com/docs/en/user-guide/UM10204.pdf>. I<sup>2</sup>C is a serial 8-bit protocol with two-wire interface, which supports communication between different ICs. For example between the  $\mu$ C and other peripheral devices such as a GNSS module or sensors.

### 2.1 General characteristics

A serial data line (*SDA*) and a serial clock line (*SCL*) are required for the communication between the devices connected via I<sup>2</sup>C bus. Both *SDA* and *SCL* lines are bidirectional. The output stages of devices connected to the bus must have an open-drain or open-collector. Hence, the *SDA* and *SCL* lines shall be connected to a positive supply voltage using pull-up resistors.

In the I<sup>2</sup>C protocol, the communication is realized through master-slave principle. The master device generates the clock pulses, a start command and a stop command for the data transfer. Each connected device on the bus is addressable via a unique address. Master and slave can act as a transmitter or a receiver depending upon whether the data needs to be transmitted or received.

The GNSS module supports the role of I<sup>2</sup>C multi-master which means it will act as a I<sup>2</sup>C master and send data to a specific slave address whenever it has data available and the bus is idle.

In case the GNSS module has no data to send, it will switch into the I<sup>2</sup>C slave role to be able to receive data from another master that addresses the GNSS module via the bus.

### 2.2 *SDA* and *SCL* logic levels

Logic level is the positive supply voltage to which *SDA* and *SCL* lines are to be pulled up (through internal or external pull-up resistors).

The GNSS modules support specified logic levels (product specific, e.g. 1.8V) which must be either used by every device on the I<sup>2</sup>C bus or a logic level conversion must be implemented in-between the GNSS module and the other bus participants. This conversion IC must be selected in a manner that it supports the requirements of I<sup>2</sup>C set by the GNSS module, i.e. open-drain / open-collector and at least 400kHz clock speed.

### 2.3 Communication phase

#### 2.3.1 Idle state

During the idle state, the bus is free and both *SDA* and *SCL* lines are in logic high '1' state. No master has requested the bus by sending START(S).

### 2.3.2 START(S) and STOP(P) condition

Data transfer on the bus starts with a START command, which is generated by the active master. A start condition is defined as a high-to-low transition on the *SDA* line while the *SCL* line is held high.

The bus is considered busy after the start condition, so no other master may access it. Slaves are not allowed to perform any bus activity unless addressed by a read access from a master.

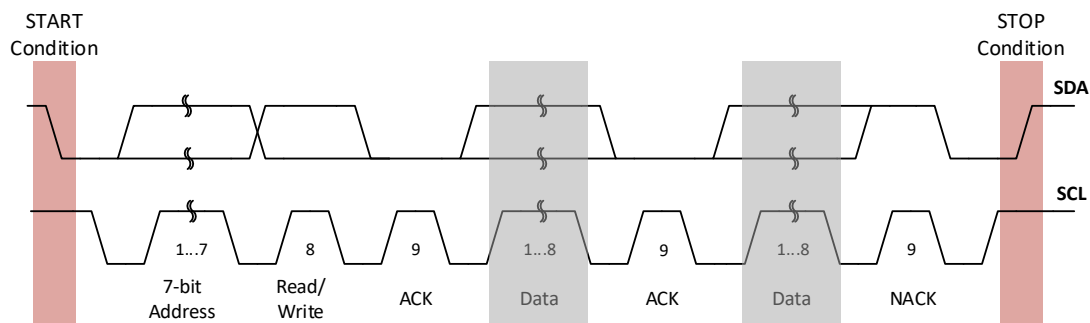


Figure 1: Data transfer from GNSS to slave

Data transfer on the bus is terminated with a STOP command, which is also generated by the active master. A low-to-high transition on the *SDA* line, while the *SCL* line being high is defined as a STOP condition.

After the stop condition, the bus is again considered free and is in idle state. Figure 2 shows the I<sup>2</sup>C bus START and STOP conditions.

### 2.3.3 Data validity

After the START condition, one data bit is transmitted with each clock pulse. The transmitted data is only valid when the *SDA* line data is stable (HIGH or LOW) during the high period of the clock pulse. HIGH or LOW state of the data line can only change when the clock pulse is in low state.



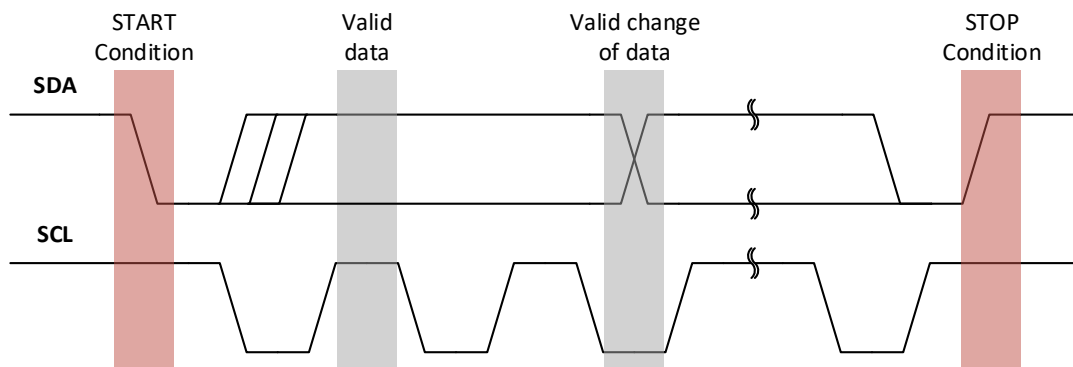


Figure 2: Data validity, START and STOP condition

### 2.3.4 Data format

Data transmission on the *SDA* line is always done in bytes, with each byte being 8-bits long. Data is transmitted with the most significant bit (MSB) first.

If the slave cannot receive or transmit another complete byte of data, it can force the master into a wait state by holding *SCL* LOW. Data transfer continues when the slave is ready which is indicated by releasing the *SCL* pin.

### 2.3.5 Acknowledge and No-Acknowledge

Each byte transmitted on the data line must be followed by an acknowledge bit (ACK). The receiver of the data (master or slave) generates an acknowledge signal to indicate that the data byte was received successfully and the receiver is ready to receive next data byte. This behaviour is shown in figure 1.

After one byte is transmitted, the master generates an additional acknowledge clock pulse to continue the data transfer. The transmitter releases the *SDA* line during this clock pulse so that the receiver can pull the *SDA* line to low state in such a way that the *SDA* line remains stable low during the entire high period of the clock pulse. It is considered as an Acknowledge signal.

If the receiver does not want to receive any further byte, it will not pull down the *SDA* line and it remains in stable high state during the entire clock pulse. It is considered as a No-Acknowledge (NACK) signal. After that, the master can generate either a stop condition to terminate the data transfer or a repeated start condition to initiate a new data transfer.

If there is no slave reaction following the master's message, the NACK signal will occur. This is caused by the pull-up resistor forcing a HIGH logic level on the *SDA* bus line. As already explained, a HIGH logic level during the clock pulse is interpreted as NACK by the master.

### 2.3.6 Addressing the GNSS module

The GNSS module supports 7-bit addressing. Users must make sure that each device on the I<sup>2</sup>C bus has a unique address. The master selects the slave by sending a slave address

after each START condition.

When the GNSS module takes the role of a master/transmitter it will always try to send data to a fixed 7-bit slave address 1100010b (0x62).

The 7-bit slave/receiving address of the GNSS module is 1100000b (0x60). This address is used by the GNSS module only to receive data from a master.

The R/W bit determines the data direction. A '0' (LOW logic level) indicates a write operation (transmission from master to slave) and a '1' (HIGH) indicates a read operation (data request from slave).

In the master role the GNSS module only uses "write" operation as indicated by the R/W bit in the first byte of a transfer. In the slave role it only supports "write" operations from the master that is sending data to the GNSS module.

### 2.3.7 GNSS communication protocol

The GNSS module uses the NMEA protocol (default) or the OSP binary protocol (optional, can be enabled temporarily by the user). This is valid for any of its host communication interfaces. Details regarding the protocols can be found in the product specific user manual. The first protocol byte is directly following the 7-bit address and 1 R/W bit.

Users need to ensure that the bus capacity is adequate for the bus data transfer load peaks and that resulting latencies are not detrimental to system performance. This means that only a limited number of participants can be part of the shared bus.

Depending on the enabled messages, the GNSS module will send more or less data to the slave that is addressed by the 0x62 address.

## 2.4 I<sup>2</sup>C timing parameters

The clock is fixed to 400 kHz during master operation of the module and sending data (fast mode). During slave mode (receiving data from a master) fast mode (400kHz) as well as normal mode (100kHz) are supported by the GNSS module. The bus contention/arbitration timeout is 30 ms and cannot be changed.

Old data in the GNSS module buffer is discarded when a slave is not acknowledging the reception of the messages from the GNSS module. For optimal operation, the GNSS module assumes unrestricted outflow of serial messages and no periodic inflow of serial messages into the GNSS module.

When a message is sent to the GNSS module the reaction to this message may be delayed until all pending messages in the buffer are sent by the GNSS module and acknowledged by a slave.

### 3 Hardware Setup

The I<sup>2</sup>C (Inter-IC) bus interface can be selected as the communication interface in the GNSS module through */CTS* and */RTS* pins. During power up, the module recognizes the I<sup>2</sup>C bus interface through the */CTS* and */RTS* pin connections as per table 2.

Interface	<i>/CTS</i>	<i>/RTS</i>
I <sup>2</sup> C	Open	External pull-down

Table 2: I<sup>2</sup>C Interface Setting

By default the evaluation board is implemented with UART interface. To communicate with the module through I<sup>2</sup>C bus interface, modifications on the evaluation board are required by the user. Our Erinome-I GNSS module operates with a power supply of 3.3 V. This makes the hardware setup slightly different from the other GNSS modules Elara-I, Elara-II and Erinome-II. Details follow in the next sections.

#### 3.1 Hardware Setup - 1.8V

Common I<sup>2</sup>C hardware setup for Elara-I, Elara-II and Erinome-II evaluation board is shown in the figure 3.

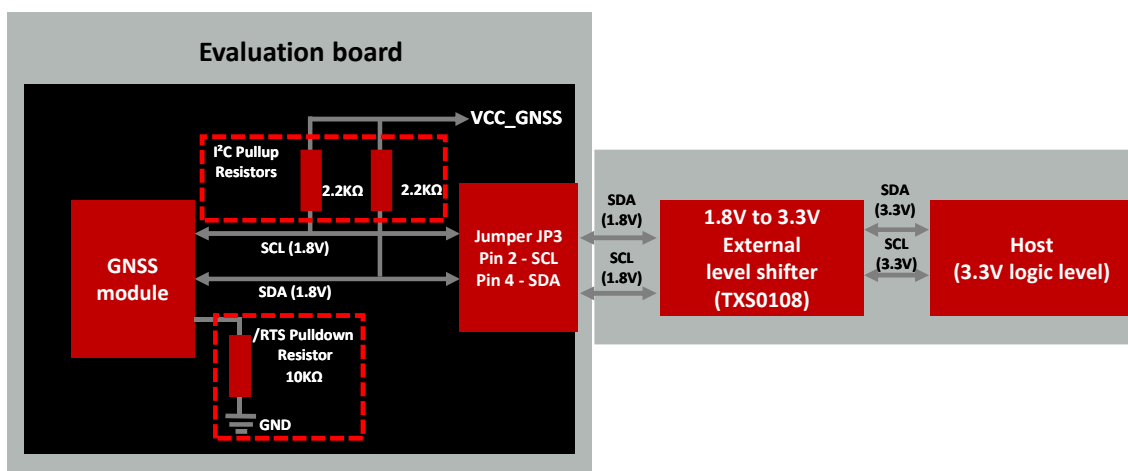


Figure 3: I<sup>2</sup>C Hardware setup - 1.8V

The block diagram illustrates the pull-up resistors assembly for the SDA and SCL bus lines as well as the pull-down resistor on the */RTS* pin for booting up in I<sup>2</sup>C interface mode. It also shows that the I<sup>2</sup>C bus access on evaluation board jumper JP3-2 and JP3-4 can be used to connect the bus to a host.

The I<sup>2</sup>C bus outputs on jumper JP3 are 1.8V logic levels. Therefore, a suitable level shifter is needed for further logic level translation (i.e. when the host does not support 1.8V logic level). For a logic level translation to 3.3V, the level shifter TXS0108 by Texas Instruments is used in the tested hardware setup. Further information of the level shifter can be found at <https://www.ti.com/product/TXS0108E>.



Please note that the level shifter shall use an open drain circuit and support I<sup>2</sup>C communication.

### 3.2 Evaluation Board Modification - 1.8V

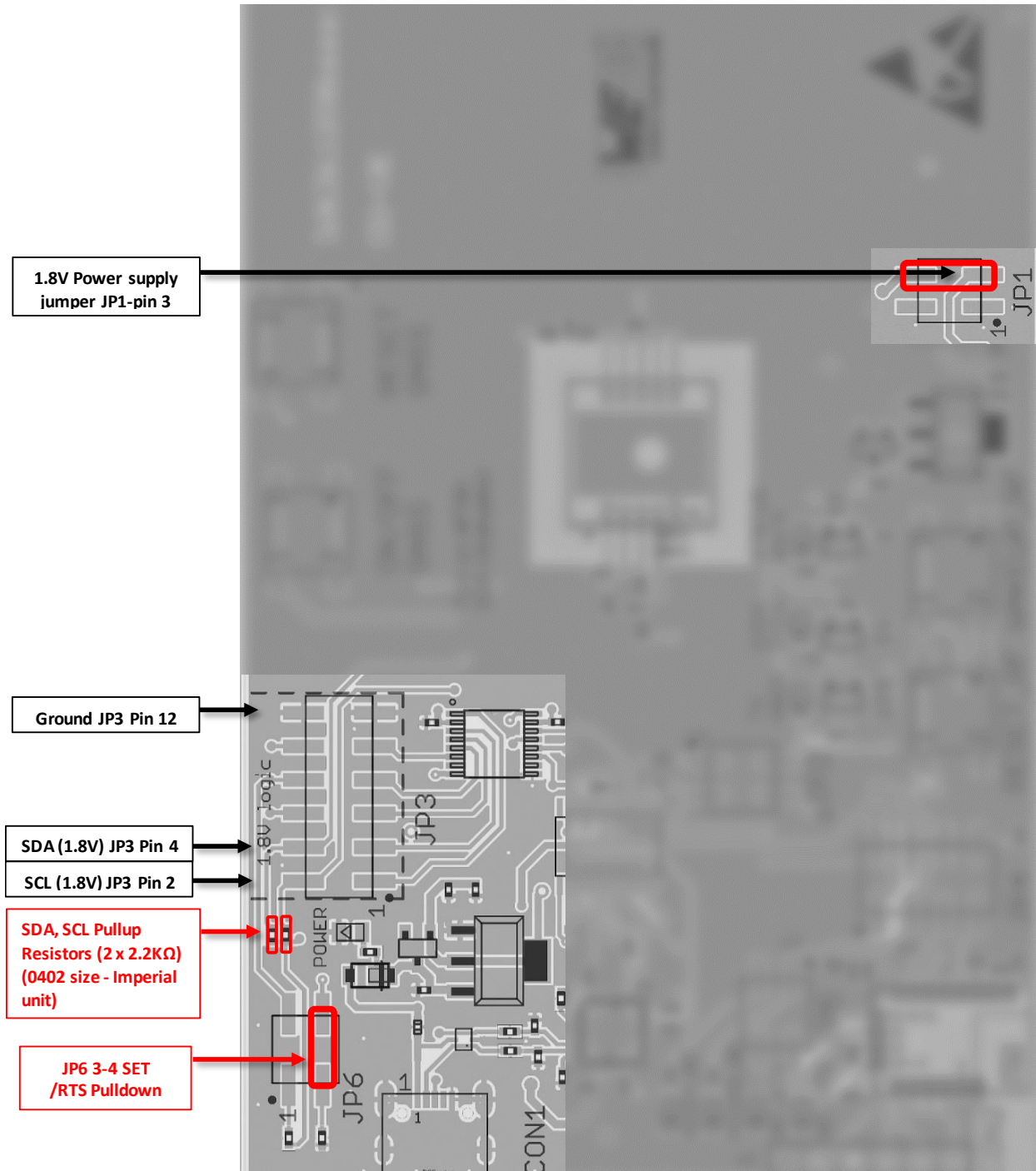


Figure 4: I<sup>2</sup>C evaluation board modification-1.8V

Figure 4 illustrates the necessary modification to be done on the evaluation board for I<sup>2</sup>C communication.

The highlighted area in figure 4 is common for the evaluation boards of Elara-I, Elara-II and Erinome-II modules.

The following changes must be done:

- Solder 2.2k $\Omega$  pull-up resistors on the SDA and SCL bus;
- Connecting 10k $\Omega$  pull-down resistor on /RTS line by switching JP6 from default position (1,2) to (3,4).



Apart from the hardware modifications listed above and from what shown in Figure 4, other jumpers shall be kept in default position, please refer to module specific evaluation board manual.

The I<sup>2</sup>C bus (1.8V logic level) can be accessed through the jumper JP3.

Jumper JP3 (1.8V logic level)	
I <sup>2</sup> C SCL	Pin 2
I <sup>2</sup> C SDA	Pin 4
Ground	Pin 12

Table 3: I<sup>2</sup>C Jumper JP3 Connection-1.8V

The 1.8 V reference supply can be accessed through JP1 Pin-3.

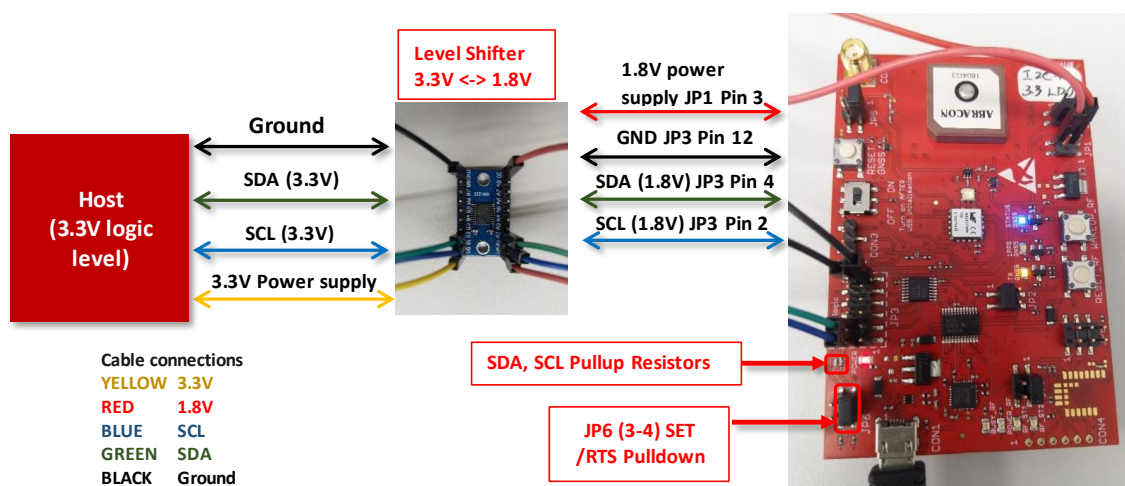


Figure 5: 1.8V - GNSS evaluation board connection to 3.3V Host

### 3.3 Hardware Setup - Erinome-I

In the figure 6 the I<sup>2</sup>C hardware setup for Erinome-I evaluation board is shown.

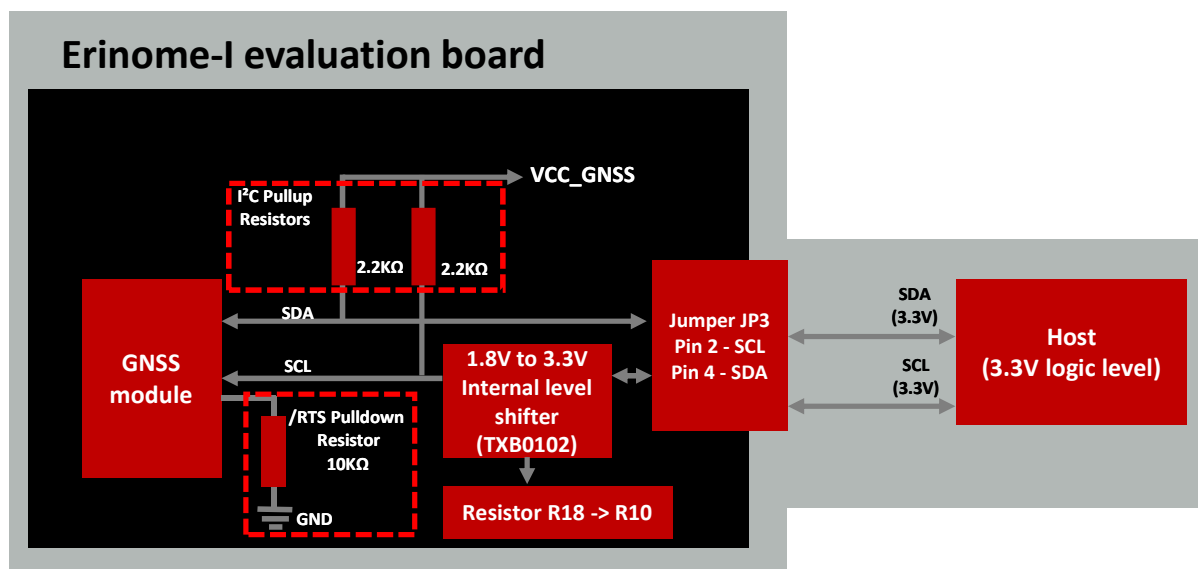


Figure 6: I<sup>2</sup>C Hardware setup - Erinome-I

Erinome-I module operates with input logic level of 3.3V, VCC of 3.3V and output logic level of 1.8V. For detailed information please refer to the product specific user manual.

Erinome-I evaluation board has an internal level shifter circuit implemented in TX data line (I<sup>2</sup>C SCL bus) for UART interface operation. This has to be adapted to I<sup>2</sup>C hardware setup. The internal level shifter used in the evaluation board is TXB0102, which uses push-pull switching circuit for UART operation. Further information of the level shifter can be found at <https://www.ti.com/product/TXB0102>.

The pull-up and pull-down resistor assembly needed for the I<sup>2</sup>C communication and level shifter circuit adaptation are illustrated in the block diagram.

In this setup, the I<sup>2</sup>C bus outputs on jumper JP3 use 3.3V logic level. Therefore, an additional external level shifter is not needed for 3.3V logic level operation.



For a logic level translation to other logic level, please note that the level shifter shall use an open drain circuit and support I<sup>2</sup>C communication.







Apart from the hardware modifications listed above, jumpers shall be set according to Figure 7.

The I<sup>2</sup>C bus (3.3V logic level) can be accessed through the jumper JP3.

Jumper JP3 (3.3V logic level)	
I <sup>2</sup> C SCL	Pin 2
I <sup>2</sup> C SDA	Pin 4
Ground	Pin 12

Table 4: I<sup>2</sup>C Jumper JP3 Connection- ANR018 GNSS I2C Communication

The 3.3 V reference supply can be accessed through JP1 Pin-3.

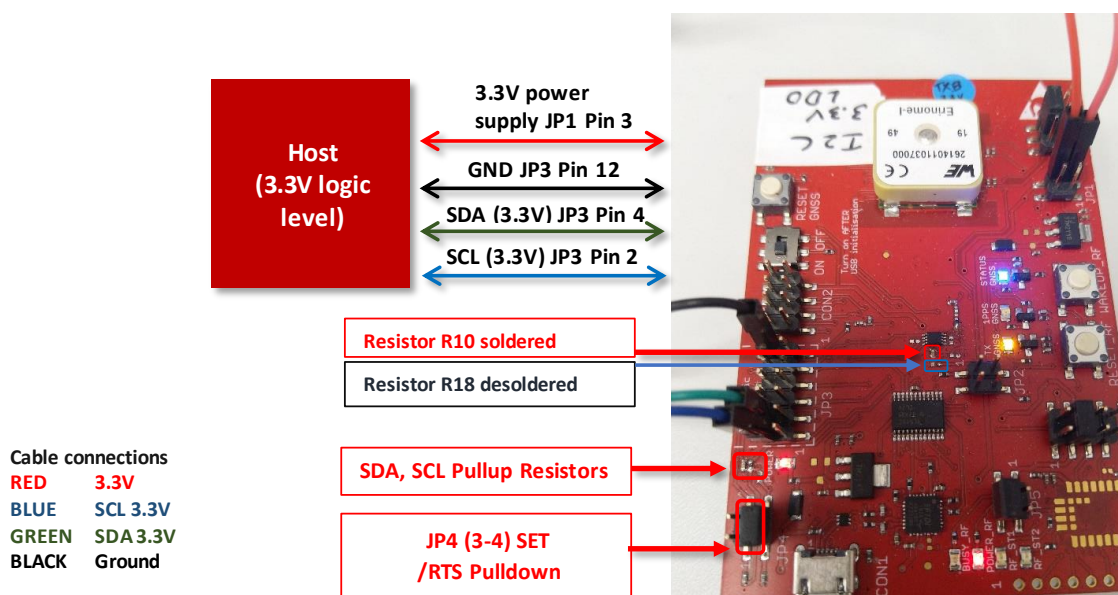


Figure 8: 3.3V - ANR018 GNSS I2C Communication evaluation board connection to 3.3V Host

For further information about I<sup>2</sup>C communication with the ANR018 GNSS I2C Communication, including an application example with Aardvark and its matching PC software, please refer to our dedicated application note: *Application Note ANR018*.



## 4 Application Example

### 4.1 Total Phase Aardvark host adapter

Aardvark is a bus to USB adapter with a matching Windows PC Software. It allows to access I<sup>2</sup>C as well as SPI bus either as master or slave. In case of I<sup>2</sup>C slave and master operation, addresses can be configured manually. This allows selecting the address required for communication with the GNSS module. For detailed information please refer to the Aardvark user manual at <https://www.totalphase.com/support/articles/200468316-Aardvark-I2C-SPI-Host-Adapter-User-Manual>.



Figure 9: Aardvark bus to USB adapter

In this example, Aardvark takes the role of the host and is used to communicate with the GNSS modules. Aardvark adapter has USB-B 2.0 connector for the PC connection and ribbon cable connector for the bus connection. Aardvark adapter has a standard 10-wire 1.25mm pitch ribbon cable with a standard 2.54mm pitch IDC type ribbon cable connector.

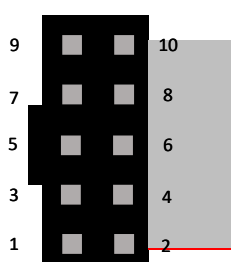


Figure 10: Aardvark connector pinout

Function	Pin number
SCL	1
GND	2
SDA	3

Table 5: Aardvark pins used for I<sup>2</sup>C communication

The Control Center Serial Software is used to configure the Aardvark for I<sup>2</sup>C communication. This software tool, usable with the Aardvark hardware only, can be downloaded from Total Phase. The USB drivers for Aardvark are also available through Total Phase.



We cannot offer any support that extends this description. In case of further questions regarding the Aardvark tool, please get in direct contact with the manufacturer Total Phase.

Aardvark input logic level is 3.3V. Therefore, corresponding logic level translation is necessary to establish communication between GNSS modules and Aardvark. For the modules with 1.8V power supply (Elara-I, Elara-II and Erinome-II) the external level shifter as shown in the hardware setup is implemented. The evaluation board of TXS0108 level shifter is used in this application.

In case of Erinome-I evaluation board, SCL and SDA bus connection with 3.3V logic level from the jumper JP3 can be directly connected to Aardvark.

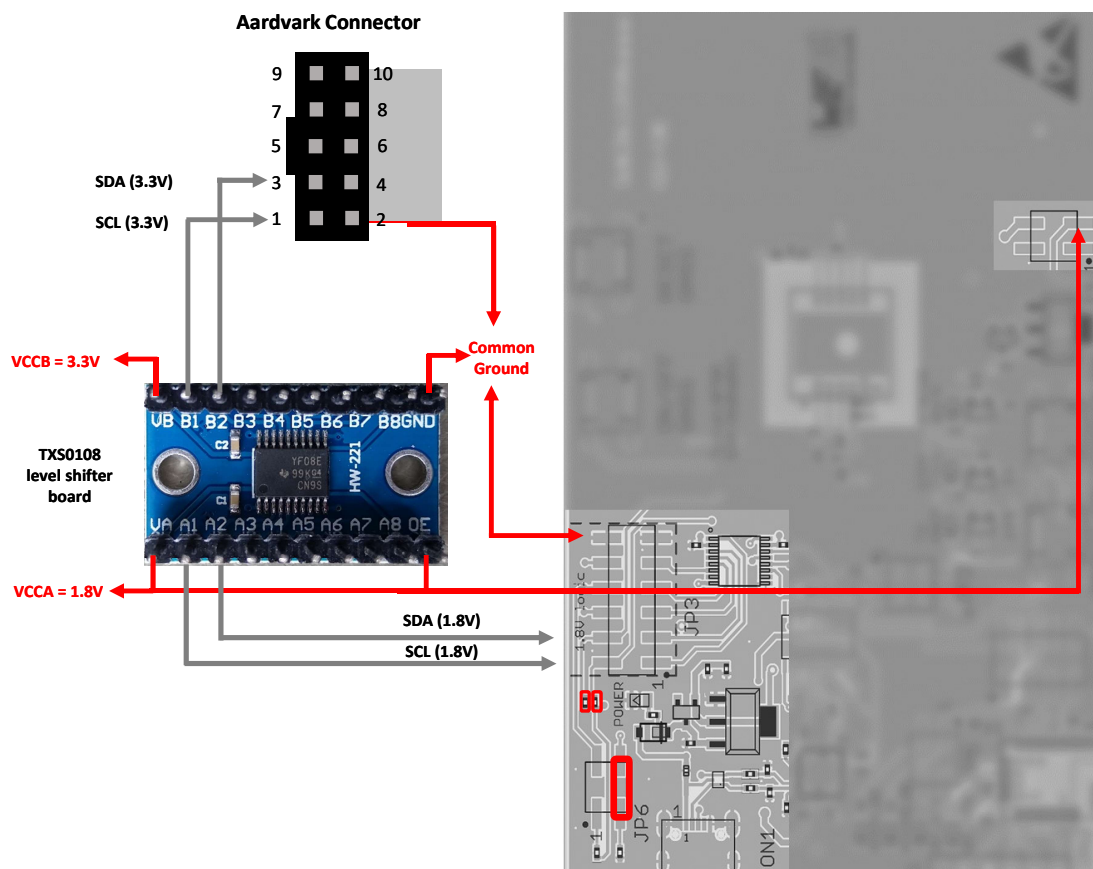


Figure 11: Aardvark Host to GNSS evaluation board - 1.8V

Connection	Level shifter pin	GNSS evaluation board
1.8V supply	VA	JP1 - pin 3
1.8V supply (same as VA Pin)	OE	JP1 - pin 3
3.3V supply	VB	Host
SCL 1.8V to level shifter	A1	JP3 - pin 2
SDA 1.8V to level shifter	A2	JP3 - pin 4
Common ground connection	GND	JP3 - pin 12

Table 6: GNSS evaluation board to TXS0108 level shifter connection

Connection	Level shifter pin	Aardvark pin
SCL 3.3V to Aardvark	B1	1
SDA 3.3V to Aardvark	B2	3
Common ground connection	GND	2

Table 7: TXS0108 level shifter to Aardvark connection

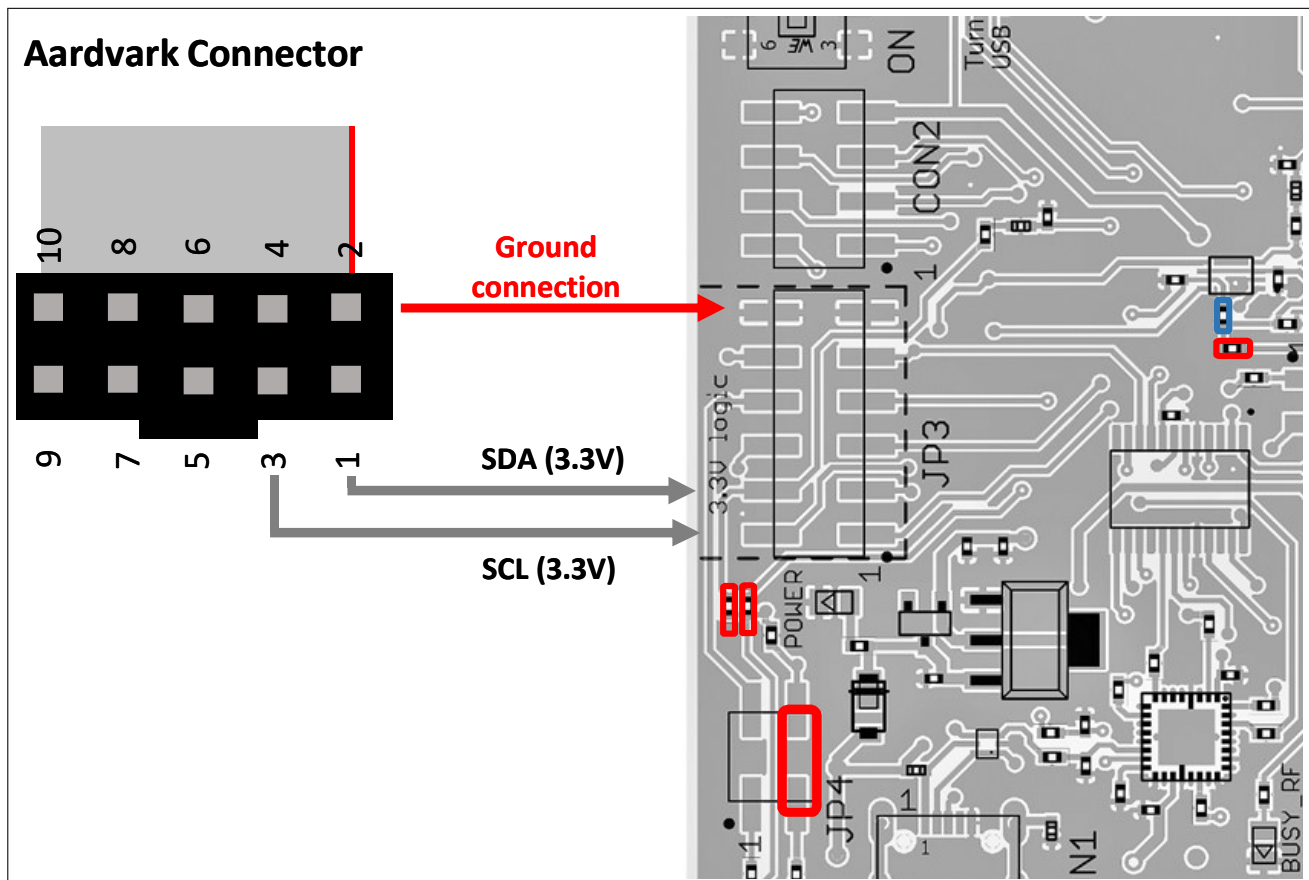


Figure 12: Aardvark to 3.3V (Erinome-I) evaluation board

Connection	GNSS evaluation board JP3 pin	Aardvark pin
SCL 3.3V to Aardvark	2	1
Ground connection	12	2
SDA 3.3V to Aardvark	4	3

Table 8: Aardvark to 3.3V (Erinome-I) evaluation board

To communicate with the GNSS module through Aardvark, prepare the hardware setup according to the GNSS module used. After that, follow the steps below to establish I<sup>2</sup>C communication between the GNSS module and Aardvark.

- Connect the GNSS evaluation board to PC through a micro USB cable.
- Make sure that the module is in hibernate mode. Please refer to module evaluation board specific user manual.
- Module power supply (VCC) is stable and able to reliably supply the module's static and peak current consumption as specified by the module manual.
- Connect the Aardvark USB cable to PC.
- Open control center serial software in PC.

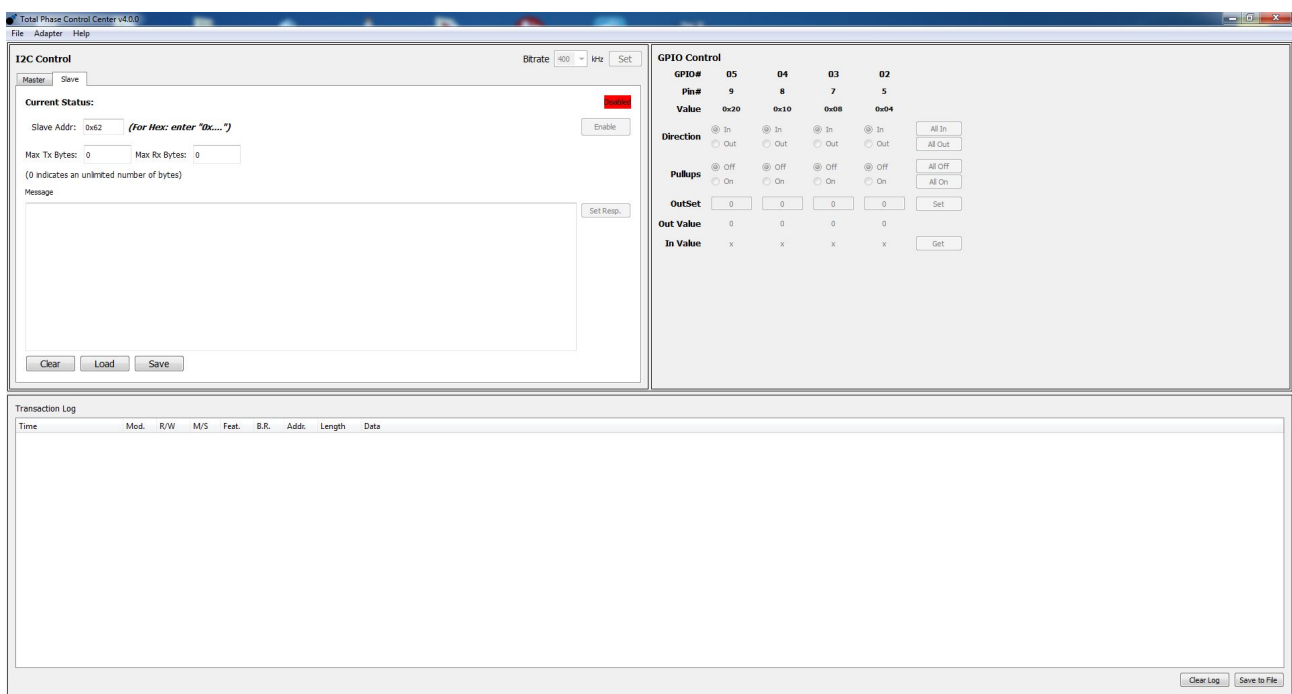


Figure 13: Control center serial software open window

- Select 'Adapter-> Connect'.
- Select 'I2C - GPIO'.
- Click 'OK'.

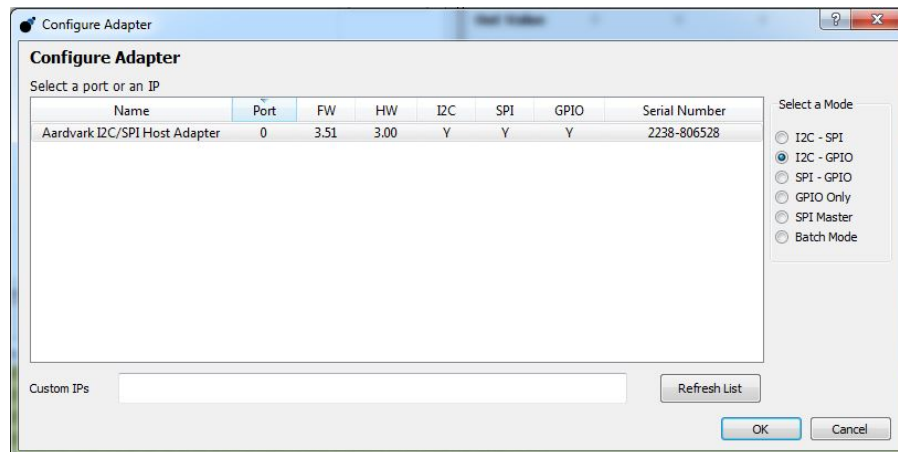


Figure 14: Connect I2C

- Select Slave tab.
- Select the bitrate to 400kHz from the dropdown list.
- Enter '0x62' Slave Addr.
- Click 'Set'.

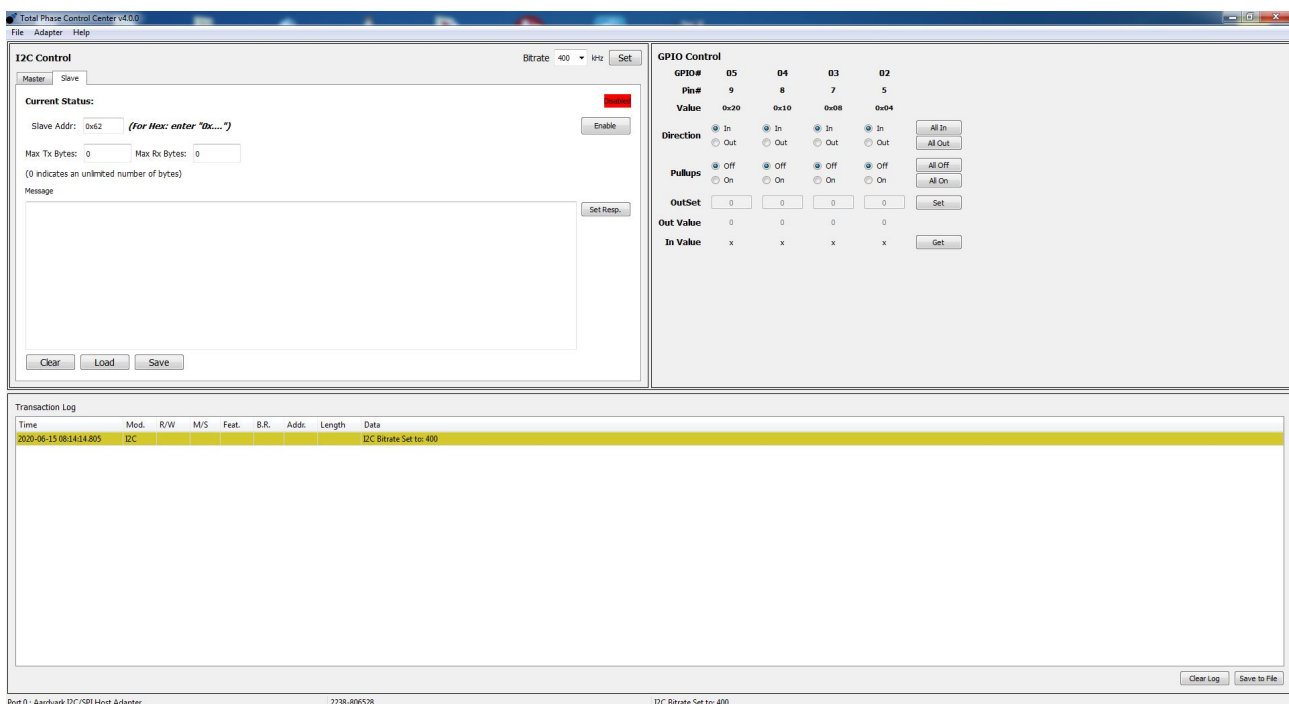


Figure 15: I2C Bitrate set

- Make sure 'Adapter -> I2C Pullups' is deactivated.
- Click 'Enable' in the Slave tab.
- Switch GNSS module into full power mode. Please refer to module evaluation board specific user manual.

After the steps are properly followed the I<sup>2</sup>C interface communication between module and Aardvark will be started. GNSS messages from the module can be viewed in the transaction log of the control center serial software in hexadecimal form. These messages in the transaction log have to be manually converted into ASCII form.

For information about the NMEA messages supported by the GNSS module, please refer to the module specific user manual.

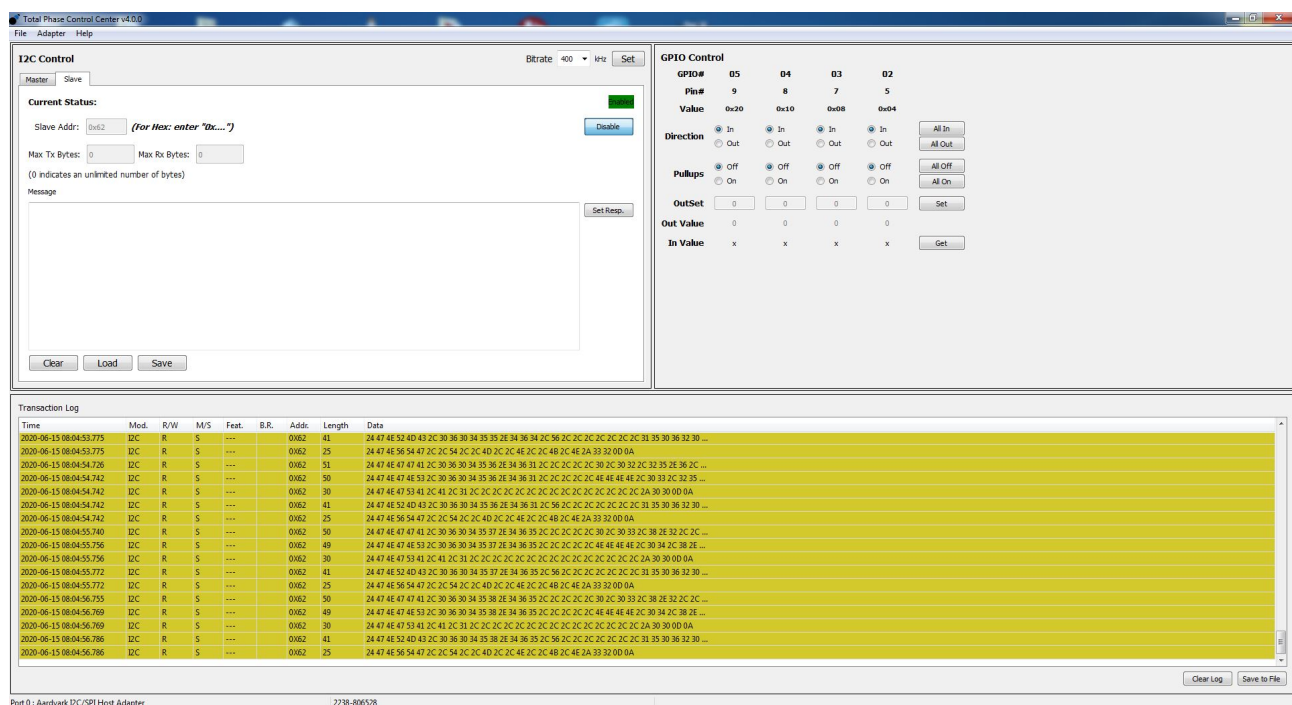


Figure 16: I<sup>2</sup>C communication

## 4.2 Generic Microcontroller

The following flowchart shows the principle that needs to be implemented into the  $\mu$ C firmware to allow a communication with the GNSS module over the I<sup>2</sup>C interface and the protocol used in the GNSS module.

The protocol used by the GNSS module is typically different to common sensor protocols. Therewith many existing drivers or hardware abstraction layers are not matching the requirements of the GNSS protocol. It may be necessary to modify existing drivers or write new drivers.

A  $\mu$ C host driver for use with the GNSS module is required to support at least 400kHz clock, slave mode, 7-bit addressing with the own address 0x62 and a variable I<sup>2</sup>C transfer length.

The application in the host is also required to support concatenating and parsing NMEA messages that will be sent by the GNSS module. For information regarding NMEA messages supported and used by the GNSS module refer to the module specific user manual.



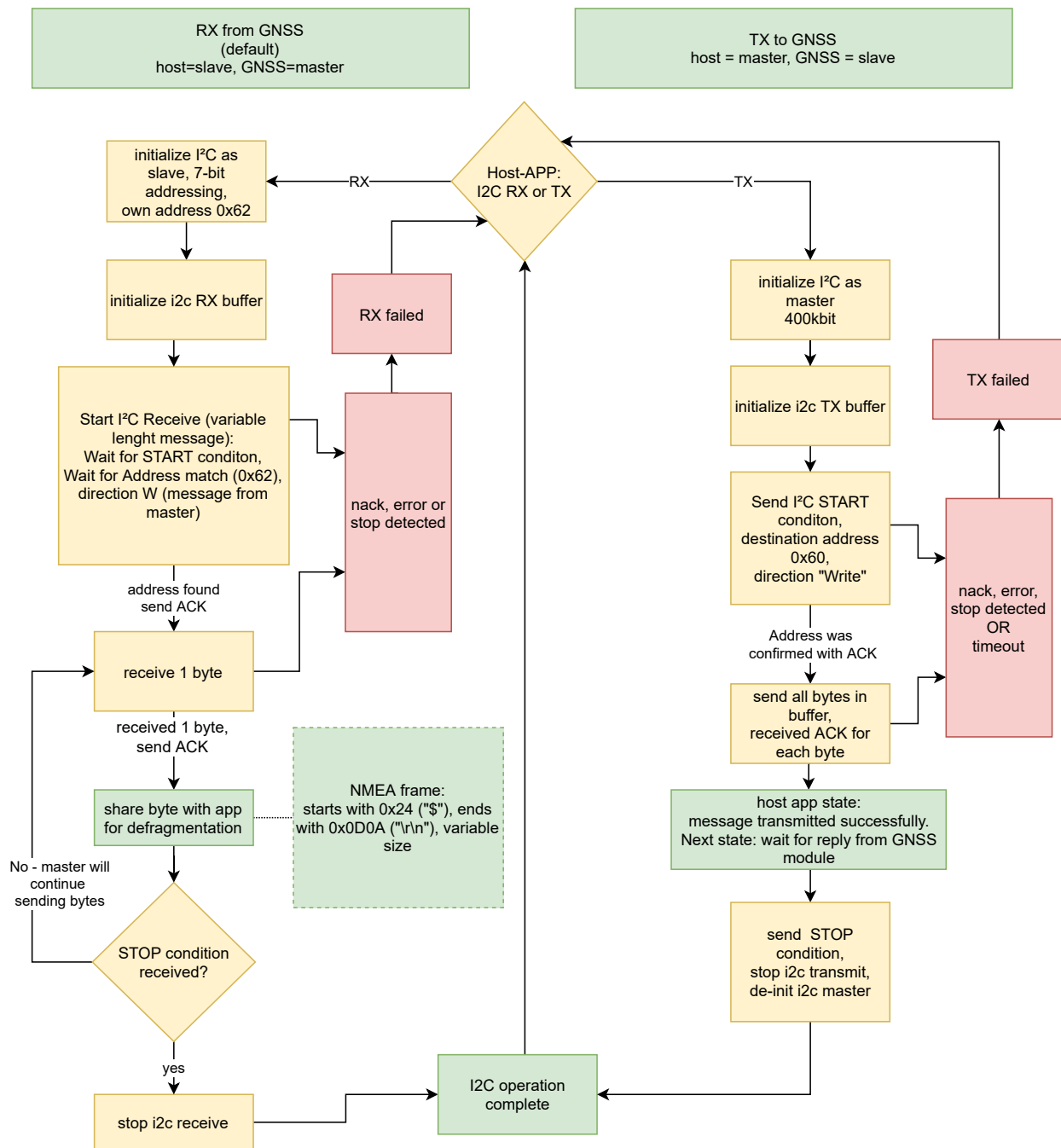


Figure 17: Flowchart for host implementation

## 5 Troubleshooting

If the communication between host and GNSS modules cannot be established, please verify the following points.

- Check the logic level compatibility between GNSS module and host.
- Check hardware setup is properly connected according to the relevant GNSS module used.
- Check if recommended hardware modifications on the relevant GNSS evaluation board are made.
  - For Elara-I, Elara-II and Elara-III evaluation board hardware modification refer to chapter 3.2
  - For Erinome-I evaluation board hardware modification refer to chapter 3.4
- Check if the level shifter supports the required logic level translation between GNSS module and Host.
- Check whether the level shifter uses open drain circuit and is I<sup>2</sup>C compatible.
- Check whether the level shifter supports the required bitrate of 400 kbits/s.
- Check power up sequence- 'Module Power up-> Reset -> Hibernate mode -> Full power mode'. Refer to the module specific manual for further information.
- Check if pull-down on /RTS line is active during power up.
- Check if I<sup>2</sup>C operation mode 'Master or Slave' on GNSS module and Host.
- Check the bitrate on both Host and GNSS module.
- Check I<sup>2</sup>C bus signals using a logic analyser.
- Check if pull-up resistors are needed in I<sup>2</sup>C bus on the host controller.
- Check if the length of I<sup>2</sup>C bus is kept as short as possible.

## 6 Important notes

The following conditions apply to all goods within the wireless connectivity product range of Würth Elektronik eiSos GmbH & Co. KG:

### 6.1 General customer responsibility

Some goods within the product range of Würth Elektronik eiSos GmbH & Co. KG contain statements regarding general suitability for certain application areas. These statements about suitability are based on our knowledge and experience of typical requirements concerning the areas, serve as general guidance and cannot be estimated as binding statements about the suitability for a customer application. The responsibility for the applicability and use in a particular customer design is always solely within the authority of the customer. Due to this fact, it is up to the customer to evaluate, where appropriate to investigate and to decide whether the device with the specific product characteristics described in the product specification is valid and suitable for the respective customer application or not. Accordingly, the customer is cautioned to verify that the documentation is current before placing orders.

### 6.2 Customer responsibility related to specific, in particular safety-relevant applications

It has to be clearly pointed out that the possibility of a malfunction of electronic components or failure before the end of the usual lifetime cannot be completely eliminated in the current state of the art, even if the products are operated within the range of the specifications. The same statement is valid for all software sourcecode and firmware parts contained in or used with or for products in the wireless connectivity and sensor product range of Würth Elektronik eiSos GmbH & Co. KG. In certain customer applications requiring a high level of safety and especially in customer applications in which the malfunction or failure of an electronic component could endanger human life or health, it must be ensured by most advanced technological aid of suitable design of the customer application that no injury or damage is caused to third parties in the event of malfunction or failure of an electronic component.

### 6.3 Best care and attention

Any product-specific data sheets, manuals, application notes, PCN's, warnings and cautions must be strictly observed in the most recent versions and matching to the products firmware revisions. This documents can be downloaded from the product specific sections on the wireless connectivity homepage.

### 6.4 Customer support for product specifications

Some products within the product range may contain substances, which are subject to restrictions in certain jurisdictions in order to serve specific technical requirements. Necessary information is available on request. In this case, the field sales engineer or the internal sales person in charge should be contacted who will be happy to support in this matter.

## 6.5 Product improvements

Due to constant product improvement, product specifications may change from time to time. As a standard reporting procedure of the Product Change Notification (PCN) according to the JEDEC-Standard, we inform about major changes. In case of further queries regarding the PCN, the field sales engineer, the internal sales person or the technical support team in charge should be contacted. The basic responsibility of the customer as per section 6.1 and 6.2 remains unaffected. All wireless connectivity module driver software "wireless connectivity SDK" and its source codes as well as all PC software tools are not subject to the Product Change Notification information process.

## 6.6 Product life cycle

Due to technical progress and economical evaluation we also reserve the right to discontinue production and delivery of products. As a standard reporting procedure of the Product Termination Notification (PTN) according to the JEDEC-Standard we will inform at an early stage about inevitable product discontinuance. According to this, we cannot ensure that all products within our product range will always be available. Therefore, it needs to be verified with the field sales engineer or the internal sales person in charge about the current product availability expectancy before or when the product for application design-in disposal is considered. The approach named above does not apply in the case of individual agreements deviating from the foregoing for customer-specific products.

## 6.7 Property rights

All the rights for contractual products produced by Würth Elektronik eiSos GmbH & Co. KG on the basis of ideas, development contracts as well as models or templates that are subject to copyright, patent or commercial protection supplied to the customer will remain with Würth Elektronik eiSos GmbH & Co. KG. Würth Elektronik eiSos GmbH & Co. KG does not warrant or represent that any license, either expressed or implied, is granted under any patent right, copyright, mask work right, or other intellectual property right relating to any combination, application, or process in which Würth Elektronik eiSos GmbH & Co. KG components or services are used.

## 6.8 General terms and conditions

Unless otherwise agreed in individual contracts, all orders are subject to the current version of the "General Terms and Conditions of Würth Elektronik eiSos Group", last version available at [www.we-online.com](http://www.we-online.com).

## 7 Legal notice

### 7.1 Exclusion of liability

Würth Elektronik eiSos GmbH & Co. KG considers the information in this document to be correct at the time of publication. However, Würth Elektronik eiSos GmbH & Co. KG reserves the right to modify the information such as technical specifications or functions of its products or discontinue the production of these products or the support of one of these products without any written announcement or notification to customers. The customer must make sure that the information used corresponds to the latest published information. Würth Elektronik eiSos GmbH & Co. KG does not assume any liability for the use of its products. Würth Elektronik eiSos GmbH & Co. KG does not grant licenses for its patent rights or for any other of its intellectual property rights or third-party rights.

Notwithstanding anything above, Würth Elektronik eiSos GmbH & Co. KG makes no representations and/or warranties of any kind for the provided information related to their accuracy, correctness, completeness, usage of the products and/or usability for customer applications. Information published by Würth Elektronik eiSos GmbH & Co. KG regarding third-party products or services does not constitute a license to use such products or services or a warranty or endorsement thereof.

### 7.2 Suitability in customer applications

The customer bears the responsibility for compliance of systems or units, in which Würth Elektronik eiSos GmbH & Co. KG products are integrated, with applicable legal regulations. Customer acknowledges and agrees that it is solely responsible for compliance with all legal, regulatory and safety-related requirements concerning its products, and any use of Würth Elektronik eiSos GmbH & Co. KG components in its applications, notwithstanding any applications-related information or support that may be provided by Würth Elektronik eiSos GmbH & Co. KG. Customer represents and agrees that it has all the necessary expertise to create and implement safeguards which anticipate dangerous consequences of failures, monitor failures and their consequences lessen the likelihood of failures that might cause harm and take appropriate remedial actions. The customer will fully indemnify Würth Elektronik eiSos GmbH & Co. KG and its representatives against any damages arising out of the use of any Würth Elektronik eiSos GmbH & Co. KG components in safety-critical applications.

### 7.3 Trademarks

AMBER wireless is a registered trademark of Würth Elektronik eiSos GmbH & Co. KG. All other trademarks, registered trademarks, and product names are the exclusive property of the respective owners.

### 7.4 Usage restriction

Würth Elektronik eiSos GmbH & Co. KG products have been designed and developed for usage in general electronic equipment only. This product is not authorized for use in equipment where a higher safety standard and reliability standard is especially required or where a failure of the product is reasonably expected to cause severe personal injury or death,

unless the parties have executed an agreement specifically governing such use. Moreover, Würth Elektronik eiSos GmbH & Co. KG products are neither designed nor intended for use in areas such as military, aerospace, aviation, nuclear control, submarine, transportation (automotive control, train control, ship control), transportation signal, disaster prevention, medical, public information network etc. Würth Elektronik eiSos GmbH & Co. KG must be informed about the intent of such usage before the design-in stage. In addition, sufficient reliability evaluation checks for safety must be performed on every electronic component, which is used in electrical circuits that require high safety and reliability function or performance. By using Würth Elektronik eiSos GmbH & Co. KG products, the customer agrees to these terms and conditions.

## 8 License terms

This License Terms will take effect upon the purchase and usage of the Würth Elektronik eiSos GmbH & Co. KG wireless connectivity products. You hereby agree that this license terms is applicable to the product and the incorporated software, firmware and source codes (collectively, "Software") made available by Würth Elektronik eiSos in any form, including but not limited to binary, executable or source code form.

The software included in any Würth Elektronik eiSos wireless connectivity product is purchased to you on the condition that you accept the terms and conditions of this license terms. You agree to comply with all provisions under this license terms.

### 8.1 Limited license

Würth Elektronik eiSos hereby grants you a limited, non-exclusive, non-transferable and royalty-free license to use the software and under the conditions that will be set forth in this license terms. You are free to use the provided Software only in connection with one of the products from Würth Elektronik eiSos to the extent described in this license terms. You are entitled to change or alter the source code for the sole purpose of creating an application embedding the Würth Elektronik eiSos wireless connectivity product. The transfer of the source code to third parties is allowed to the sole extent that the source code is used by such third parties in connection with our product or another hardware provided by Würth Elektronik eiSos under strict adherence of this license terms. Würth Elektronik eiSos will not assume any liability for the usage of the incorporated software and the source code. You are not entitled to transfer the source code in any form to third parties without prior written consent of Würth Elektronik eiSos.

You are not allowed to reproduce, translate, reverse engineer, decompile, disassemble or create derivative works of the incorporated Software and the source code in whole or in part. No more extensive rights to use and exploit the products are granted to you.

### 8.2 Usage and obligations

The responsibility for the applicability and use of the Würth Elektronik eiSos wireless connectivity product with the incorporated Firmware in a particular customer design is always solely within the authority of the customer. Due to this fact, it is up to you to evaluate and investigate, where appropriate, and to decide whether the device with the specific product characteristics described in the product specification is valid and suitable for your respective application or not.

You are responsible for using the Würth Elektronik eiSos wireless connectivity product with the incorporated Firmware in compliance with all applicable product liability and product safety laws. You acknowledge to minimize the risk of loss and harm to individuals and bear the risk for failure leading to personal injury or death due to your usage of the product.

Würth Elektronik eiSos' products with the incorporated Firmware are not authorized for use in safety-critical applications, or where a failure of the product is reasonably expected to cause severe personal injury or death. Moreover, Würth Elektronik eiSos' products with the incorporated Firmware are neither designed nor intended for use in areas such as military, aerospace, aviation, nuclear control, submarine, transportation (automotive control, train control, ship control), transportation signal, disaster prevention, medical, public information network etc. You shall inform Würth Elektronik eiSos about the intent of such usage before design-in stage. In certain customer applications requiring a very high level of safety and in which the malfunction or failure of an electronic component could endanger human life or



health, you must ensure to have all necessary expertise in the safety and regulatory ramifications of your applications. You acknowledge and agree that you are solely responsible for all legal, regulatory and safety-related requirements concerning your products and any use of Würth Elektronik eiSos' products with the incorporated Firmware in such safety-critical applications, notwithstanding any applications-related information or support that may be provided by Würth Elektronik eiSos. YOU SHALL INDEMNIFY WÜRTH ELEKTRONIK EISOS AGAINST ANY DAMAGES ARISING OUT OF THE USE OF WÜRTH ELEKTRONIK EISOS' PRODUCTS WITH THE INCORPORATED FIRMWARE IN SUCH SAFETY-CRITICAL APPLICATIONS.

### 8.3 Ownership

The incorporated Firmware created by Würth Elektronik eiSos is and will remain the exclusive property of Würth Elektronik eiSos.

### 8.4 Firmware update(s)

You have the opportunity to request the current and actual Firmware for a bought wireless connectivity Product within the time of warranty. However, Würth Elektronik eiSos has no obligation to update a modules firmware in their production facilities, but can offer this as a service on request. The upload of firmware updates falls within your responsibility, e.g. via ACC or another software for firmware updates. Firmware updates will not be communicated automatically. It is within your responsibility to check the current version of a firmware in the latest version of the product manual on our website. The revision table in the product manual provides all necessary information about firmware updates. There is no right to be provided with binary files, so called "Firmware images", those could be flashed through JTAG, SWD, Spi-Bi-Wire, SPI or similar interfaces.

### 8.5 Disclaimer of warranty

THE FIRMWARE IS PROVIDED "AS IS". YOU ACKNOWLEDGE THAT WÜRTH ELEKTRONIK EISOS MAKES NO REPRESENTATIONS AND WARRANTIES OF ANY KIND RELATED TO, BUT NOT LIMITED TO THE NON-INFRINGEMENT OF THIRD PARTIES' INTELLECTUAL PROPERTY RIGHTS OR THE MERCHANTABILITY OR FITNESS FOR YOUR INTENDED PURPOSE OR USAGE. WÜRTH ELEKTRONIK EISOS DOES NOT WARRANT OR REPRESENT THAT ANY LICENSE, EITHER EXPRESS OR IMPLIED, IS GRANTED UNDER ANY PATENT RIGHT, COPYRIGHT, MASK WORK RIGHT, OR OTHER INTELLECTUAL PROPERTY RIGHT RELATING TO ANY COMBINATION, MACHINE, OR PROCESS IN WHICH THE WÜRTH ELEKTRONIK EISOS' PRODUCT WITH THE INCORPORATED FIRMWARE IS USED. INFORMATION PUBLISHED BY WÜRTH ELEKTRONIK EISOS REGARDING THIRD-PARTY PRODUCTS OR SERVICES DOES NOT CONSTITUTE A LICENSE FROM WÜRTH ELEKTRONIK EISOS TO USE SUCH PRODUCTS OR SERVICES OR A WARRANTY OR ENDORSEMENT THEREOF.

### 8.6 Limitation of liability

Any liability not expressly provided by Würth Elektronik eiSos shall be disclaimed. You agree to hold us harmless from any third-party claims related to your usage of the Würth Elektronik eiSos' products with the incorporated Firmware, software and source code. Würth



Elektronik eiSos disclaims any liability for any alteration, development created by you or your customers as well as for any combination with other products.

## 8.7 Applicable law and jurisdiction

Applicable law to this license terms shall be the laws of the Federal Republic of Germany. Any dispute, claim or controversy arising out of or relating to this license terms shall be resolved and finally settled by the court competent for the location of Würth Elektronik eiSos' registered office.

## 8.8 Severability clause

If a provision of this license terms is or becomes invalid, unenforceable or null and void, this shall not affect the remaining provisions of the terms. The parties shall replace any such provisions with new valid provisions that most closely approximate the purpose of the terms.

## 8.9 Miscellaneous

Würth Elektronik eiSos reserves the right at any time to change this terms at its own discretion. It is your responsibility to check at Würth Elektronik eiSos homepage for any updates. Your continued usage of the products will be deemed as the acceptance of the change.

We recommend you to be updated about the status of new firmware and software, which is available on our website or in our data sheet and manual, and to implement new software in your device where appropriate.

By ordering a wireless connectivity product, you accept this license terms in all terms.

## List of Figures

1	Data transfer from GNSS to slave . . . . .	7
2	Data validity, START and STOP condition . . . . .	8
3	I <sup>2</sup> C Hardware setup - 1.8V . . . . .	10
4	I <sup>2</sup> C evaluation board modification-1.8V . . . . .	11
5	1.8V - GNSS evaluation board connection to 3.3V Host . . . . .	12
6	I <sup>2</sup> C Hardware setup - Erinome-I . . . . .	13
7	I <sup>2</sup> C evaluation board modification - ANR018 GNSS I2C Communication . . .	14
8	3.3V - ANR018 GNSS I2C Communication evaluation board connection to 3.3V Host . . . . .	15
9	Aardvark bus to USB adapter . . . . .	16
10	Aardvark connector pinout . . . . .	16
11	Aardvark Host to GNSS evaluation board - 1.8V . . . . .	17
12	Aardvark to 3.3V (Erinome-I) evaluation board . . . . .	19
13	Control center serial software open window . . . . .	20
14	Connect I <sup>2</sup> C . . . . .	21
15	I <sup>2</sup> C Bitrate set . . . . .	21
16	I <sup>2</sup> C communication . . . . .	22
17	Flowchart for host implementation . . . . .	24

## List of Tables

1	GNSS module power supply and logic levels . . . . .	5
2	I <sup>2</sup> C Interface Setting . . . . .	10
3	I <sup>2</sup> C Jumper JP3 Connection-1.8V . . . . .	12
4	I <sup>2</sup> C Jumper JP3 Connection- ANR018 GNSS I2C Communication . . . . .	15
5	Aardvark pins used for I <sup>2</sup> C communication . . . . .	16
6	GNSS evaluation board to TXS0108 level shifter connection . . . . .	18
7	TXS0108 level shifter to Aardvark connection . . . . .	18
8	Aardvark to 3.3V (Erinome-I) evaluation board . . . . .	19



# more than you expect



**Internet  
of Things**



**Monitoring  
& Control**



**Automated Meter  
Reading**

**Contact:**

Würth Elektronik eiSos GmbH & Co. KG  
Division Wireless Connectivity & Sensors

Max-Eyth-Straße 1  
74638 Waldenburg  
Germany

Tel.: +49 651 99355-0  
Fax.: +49 651 99355-69  
[www.we-online.com/wireless-connectivity](http://www.we-online.com/wireless-connectivity)

