

## Wrapping Scintillator Crystals to Optimize Light Collection



ON Semiconductor®

[www.onsemi.com](http://www.onsemi.com)

### INTRODUCTION

The purpose of this Application Note is to give recommendations that improve the performance of scintillators read out with Silicon Photomultiplier (SiPM) sensors from ON Semiconductor.

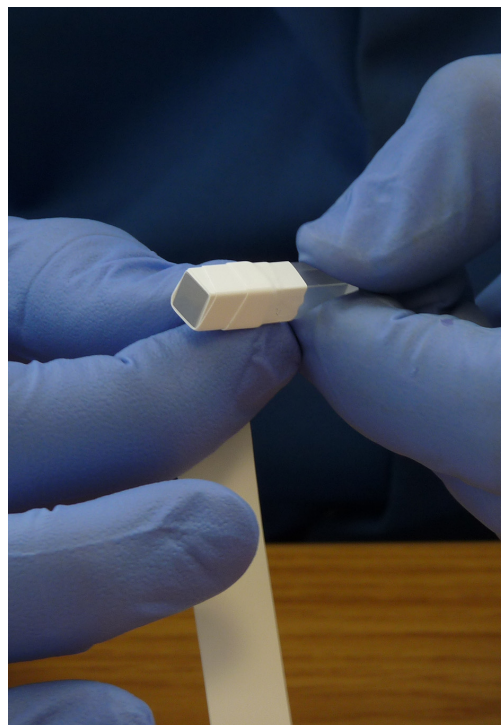
SiPMs have been shown to be a valuable alternative to traditional vacuum PMTs, especially for the readout of ( $< 10\text{--}20\text{ mm}$ ) scintillator crystals for gamma, particle and X-ray spectroscopy. The performance of scintillator-SiPM detector assemblies is characterized by the FWHM energy resolution and the achievable low-energy threshold. Such performance is highly dependent on the light-collection efficiency from the scintillator to the SiPM. With the proper set-up, SiPMs outperform vacuum PMTs, and offer the ability to develop next-generation medical and hazard and threat detection systems.

### SCINTILLATION CRYSTALS AND THEIR RECOMMENDED SHAPING TIMES

Some commonly used scintillation crystals are:

- CsI(Tl)
- BGO
- LYSO

One should note that these three crystals have different scintillation decay times and therefore different shaping times should be used for optimum performance. Generally, a delay-line shaper or gated integrator gives the best performance, but CR-RC or semigaussian shapers are more widespread. For the optimal performance, the preamplifier should be configured as an integrating preamplifier.



### APPLICATION NOTE

| Scintillator | Characteristic Decay Time  | Recommended Integration Time for Delay Line Shaper or Gated Integrator | Recommended Shaping Time for CR-RC or Semigaussian Shaper |
|--------------|--|--|---|
| CsI(Tl)      | Two components; can be approximated as single $1\text{ }\mu\text{s}$ | $3\text{--}4\text{ }\mu\text{s}$                                       | $4\text{--}5\text{ }\mu\text{s}$                          |
| BGO          | $300\text{ ns}$  | $1\text{ }\mu\text{s}$   | $500\text{ ns}$   |
| LYSO         | $40\text{ ns}$   | $200\text{ ns}$  | $250\text{ ns}$   |

## COUPLING THE SCINTILLATION CRYSTAL TO THE SiPM

For good light collection efficiency one should take the following measures:

1. The crystal size and SiPM active area should match each other. That typically means that the size of output face of the crystal is coupled to a SiPM of the same dimension (3 x 3 mm<sup>2</sup> or 6 x 6 mm<sup>2</sup>).
2. Optical coupling grease such as Bicon BC-630 should be applied between the SiPM and the crystal. For permanent mounting, one should use special transparent glues or cements like the Meltmount™.
3. The remaining five scintillator crystal surfaces that are not coupled with the SiPM should be covered with a diffuse light reflector. One of the best and most easily available materials for that is teflon tape.

## RECOMMENDED REFLECTOR MATERIAL

One of the best and most easily available materials for crystal wrapping is teflon tape, particularly the white teflon (PTFE) tape used for household plumbing. It is important to note that generally there are two types of such tape available:

1. Thin, used mostly for water tube joints.
2. Thick (so called gas quality tape), used mostly for gas tube joints.

We recommend type 2 (gas quality) as it has demonstrated significantly better performance. In addition, it is easier to use. The example of such tape is pictured on the following page, and commonly found in shops for household appliances, e.g:

<http://radionics.rs-online.com/web/p/products/231-964/>

[http://www.homedepot.com/h\\_d1/N-5yc1v/R-202280370/h\\_d2/ProductDisplay?langId=-1&storeId=10051&catalogId=10053](http://www.homedepot.com/h_d1/N-5yc1v/R-202280370/h_d2/ProductDisplay?langId=-1&storeId=10051&catalogId=10053)

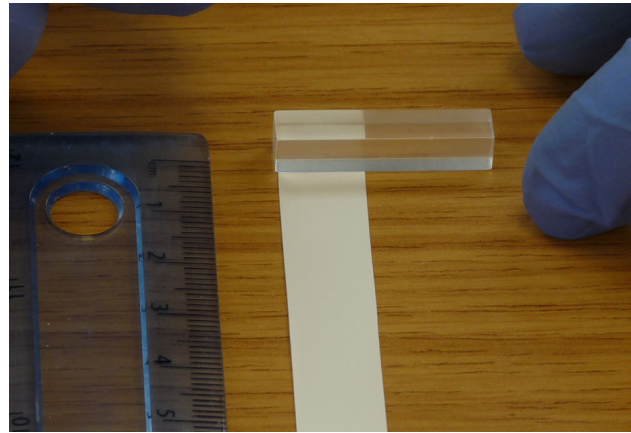


## APPLYING THE REFLECTOR MATERIAL

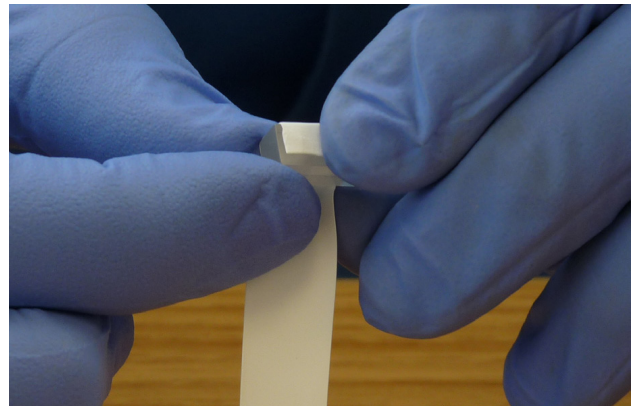
An undamaged length of the Teflon tape should be carefully unwound from the reel, and laid on the work surface. To determine the typical length of tape required to wrap a small crystal, please refer to the table below.



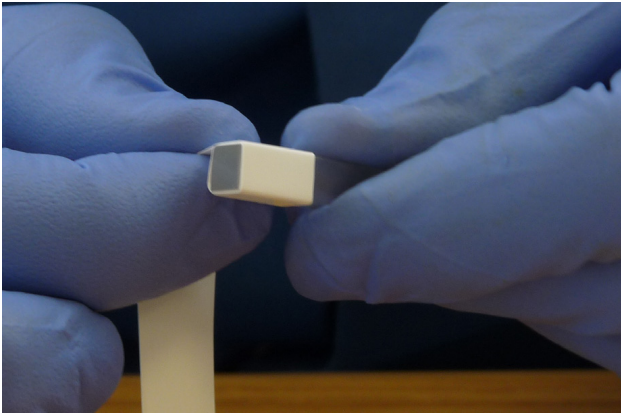
| Crystal Size               | Length of Teflon Tape |
|----------------------------|-----------------------|
| 3 x 3 x 15 mm <sup>3</sup> | 13 cm                 |
| 6 x 6 x 30 mm <sup>3</sup> | 42 cm                 |



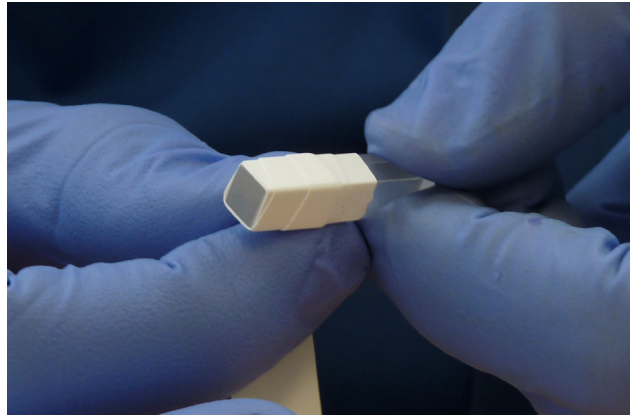
**Figure 1. Ensure that the Crystal is Clean and Free of Marks from Finger-prints etc. Carefully Lay the Crystal onto the Tape, Ensuring that the Exit Face Edge is Aligned to the Edge of the Tape**



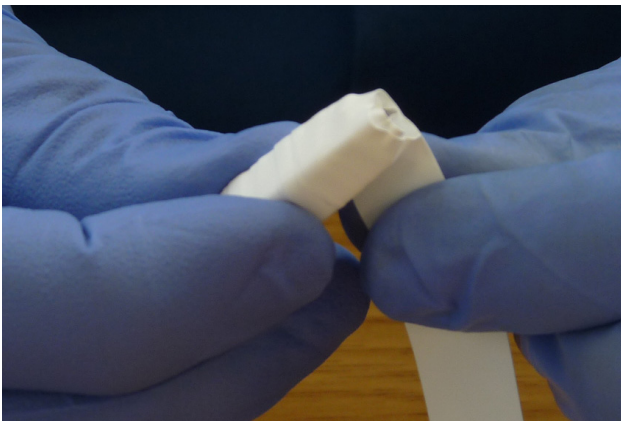
**Figure 2. Start to Carefully Wrap the Teflon around the Crystal, Ensuring that the First Wrap Neatly Aligns the Tape Edge with the Edge of the Crystal. Take Care to Avoid Covering Any of the Exit Surface with the Tape**



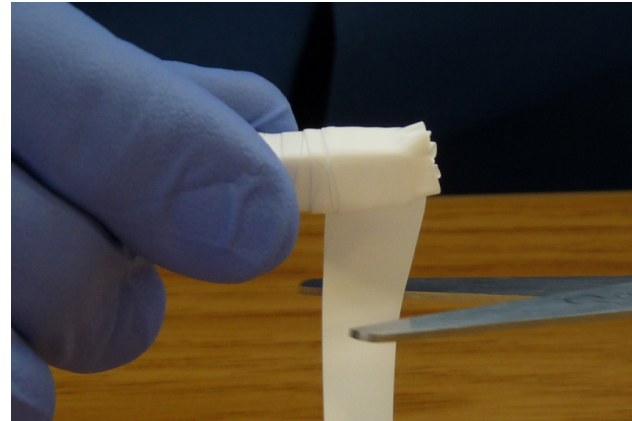
**Figure 3. After the First Wrap, Cover this Same Area with at Least Another Two Layers. You Should Aim to Have 3 Layers of Teflon Tape Covering the Five Non-exit Surfaces of the Crystal**



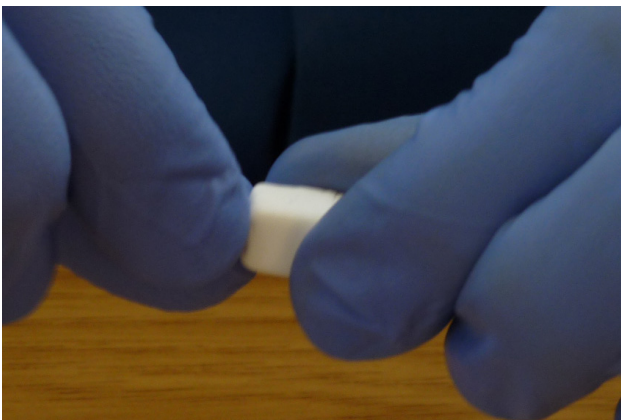
**Figure 4. Continue to Wrap Up the Length of the Crystal. Avoid Wrinkles or Damage to the Tape. Aim for 3 Layers of Teflon Coverage**



**Figure 5. Continue to Wrap Until the Tape is Generously Overlapping the End. Ensure there are 3 Layers of this Overlap**



**Figure 6. Cut Off Any Excess Tape and Wrap the Tape End Around the Crystal. The Teflon Tape Adheres to Itself Well Enough that it Should Stay in Place by Itself**



**Figure 7. Pinch Together the Overlapping Ends of the Teflon Tape to Seal the Face Opposite the Exit Surface of the Crystal. Ensure that it is Done Tightly so that it Remains Secure**




**Figure 8. The End will Look Like This. The Point can be Trimmed Off if Desired. The Wrapped Crystal is Now Ready for Use**

One should note that over time optical grease may get partially absorbed by the teflon tape causing noticeable deterioration of light reflectance. Therefore,

ON Semiconductor recommends rewrapping the crystal after every measurement to ensure the best light collection.

Meltemount is a trademark of Cargille Laboratories, Inc.

ON Semiconductor and  are trademarks of Semiconductor Components Industries, LLC dba ON Semiconductor or its subsidiaries in the United States and/or other countries. ON Semiconductor owns the rights to a number of patents, trademarks, copyrights, trade secrets, and other intellectual property. A listing of ON Semiconductor's product/patent coverage may be accessed at [www.onsemi.com/site/pdf/Patent-Marking.pdf](http://www.onsemi.com/site/pdf/Patent-Marking.pdf). ON Semiconductor reserves the right to make changes without further notice to any products herein. ON Semiconductor makes no warranty, representation or guarantee regarding the suitability of its products for any particular purpose, nor does ON Semiconductor assume any liability arising out of the application or use of any product or circuit, and specifically disclaims any and all liability, including without limitation special, consequential or incidental damages. Buyer is responsible for its products and applications using ON Semiconductor products, including compliance with all laws, regulations and safety requirements or standards, regardless of any support or applications information provided by ON Semiconductor. "Typical" parameters which may be provided in ON Semiconductor data sheets and/or specifications can and do vary in different applications and actual performance may vary over time. All operating parameters, including "Typicals" must be validated for each customer application by customer's technical experts. ON Semiconductor does not convey any license under its patent rights nor the rights of others. ON Semiconductor products are not designed, intended, or authorized for use as a critical component in life support systems or any FDA Class 3 medical devices or medical devices with a same or similar classification in a foreign jurisdiction or any devices intended for implantation in the human body. Should Buyer purchase or use ON Semiconductor products for any such unintended or unauthorized application, Buyer shall indemnify and hold ON Semiconductor and its officers, employees, subsidiaries, affiliates, and distributors harmless against all claims, costs, damages, and expenses, and reasonable attorney fees arising out of, directly or indirectly, any claim of personal injury or death associated with such unintended or unauthorized use, even if such claim alleges that ON Semiconductor was negligent regarding the design or manufacture of the part. ON Semiconductor is an Equal Opportunity/Affirmative Action Employer. This literature is subject to all applicable copyright laws and is not for resale in any manner.

### PUBLICATION ORDERING INFORMATION

#### LITERATURE FULFILLMENT:

Literature Distribution Center for ON Semiconductor  
19521 E. 32nd Pkwy, Aurora, Colorado 80011 USA  
**Phone:** 303-675-2175 or 800-344-3860 Toll Free USA/Canada  
**Fax:** 303-675-2176 or 800-344-3867 Toll Free USA/Canada  
**Email:** [orderlit@onsemi.com](mailto:orderlit@onsemi.com)

**N. American Technical Support:** 800-282-9855 Toll Free  
USA/Canada  
**Europe, Middle East and Africa Technical Support:**  
Phone: 421 33 790 2910

**ON Semiconductor Website:** [www.onsemi.com](http://www.onsemi.com)

**Order Literature:** <http://www.onsemi.com/orderlit>

For additional information, please contact your local Sales Representative