

Quad-Row Board-to-Board Connectors >

Quad-Row Board-to-Board Connectors feature a staggered circuit layout for a highly compact package in a wide range of space-constrained applications, allowing manufacturers to maximize productivity while minimizing the physical footprint. These connectors offer robust power for enhanced overall efficiency and meet market demands without compromising functionality.

ADVANTAGES AND FEATURES

Offers excellent space savings

The Quad-Row and Quad-Row Shield* Connectors feature a four-row signal pin layout which helps save PCB space and increases device compactness.

Provides robustness and protection in the interior cover

An armored and insert-molded nail helps prevent damage to the connectors.

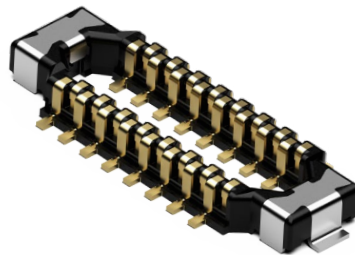
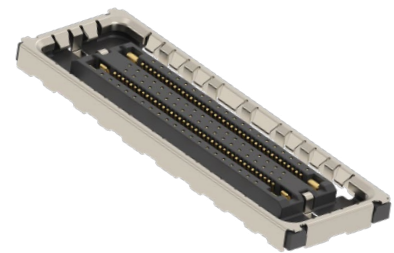
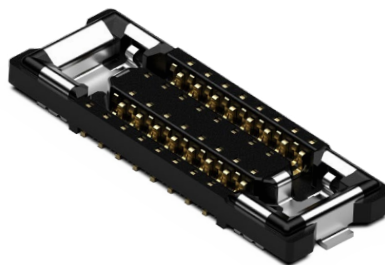
Simplifies the system design and increases functionality for enhanced performance and capabilities

More circuits are incorporated into a single connector, reducing the number of connectors needed.

Improves EMI emission on noise

Quad-Row Shield* Connectors have an added layer of metal shielding that significantly reduces electromagnetic interference, preserving signal integrity in noisy environments.

Current	3.0/4.0A
Voltage	50V
Circuits	12 to 80
Pitch	0.175mm
Height	0.50/0.60/0.80mm
Operating Temperature	-40 to +85°C



Quad-Row

Quad-Row Shield

*These products are coming soon.

Quad-Row Board-to-Board Connectors >

MARKETS AND APPLICATIONS

Apliances

- Gaming consoles
- Smart home devices
- Speakers
- TVs

Defense

- Aircraft avionics
- Unmanned vehicles

MedTech

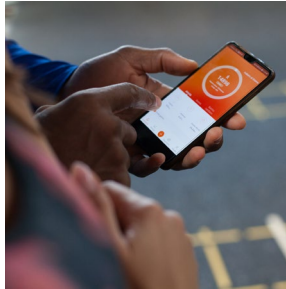
- Patient-monitoring systems
- Therapeutic and surgical equipment

Mobile Devices

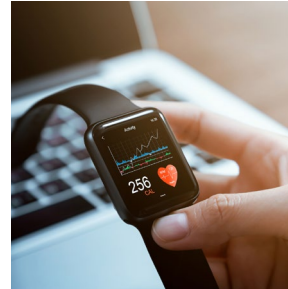
- Smart phones
- Tablets

Wearables

- AR/VR devices
- Earbuds
- Smart glasses
- Smart watches



Smart Phones



Smart Watches



Patient-Monitoring Systems

QUAD-ROW CONNECTOR LINEUPS

- - Quad-Row
- - Quad-Row Shield
- - Under Planning
- - Sample Available

Height (mm)	Circuit Size																		
	12	16	20	24	28	32	36	40	44	48	52	56	60	64	68	72	76	80	
0.50	●		●																
0.60			●	●		●	●		●	○	●			●					●
0.80											●	○							●
1.00														○					

SPECIFICATIONS

Reference Information

- Packaging: Embossed tape with cover
- Designed In: Millimeters
- RoHS: Yes
- Halogen Free: Yes

Electrical

- Voltage (max.): 50V
- Current (max.): 0.3A signal; 3.0/4.0A nail
- Contact Resistance:
 - Signal Contact: 35 milliohms
 - Nail Contact: 20 milliohms
- Dielectric Withstanding Voltage: 250V
- Insulation Resistance: 100 megohms

Mechanical

- Pitch: 0.175mm
- Mated Height: 0.50/0.60/0.80mm
- Width: 2.00mm
- Length (Receptacle):
 - Pitch (N/2-1)+3.10mm
- Structure Type: vertical type
- Circuit Sizes: 12 to 80 circuits
- Durability (max.): 30 cycles

Physical

- Housing: LCP UL94 V-0
- Contact: Copper alloy
- Plating: Contact Area—gold
 - Solder Tail Area—gold
 - Underplating—nickel
- Operating Temperatures: -40 to +85°C