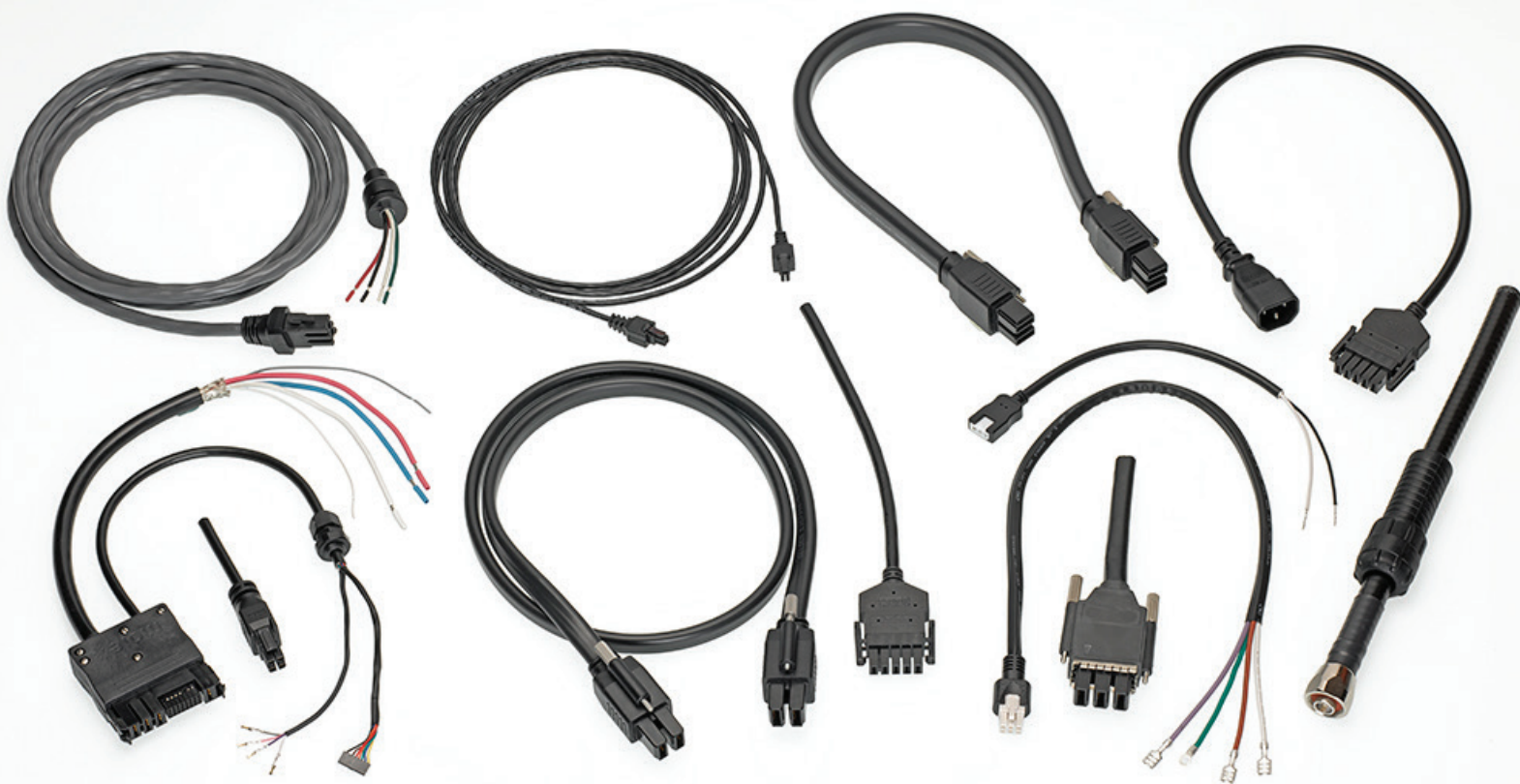


OVERMOLDED CABLE ASSEMBLY CAPABILITIES >



molex®

OVERMOLDED CABLE ASSEMBLY CAPABILITIES >

Molex collaborates closely with customers to address the most challenging applications - from concept design through final assembly

Overmolding Operation

- Molding Machines
- Halogen free overmolding for PVC, PU, PE, PBT, LCP resin
- Low pressure molding machines
- Insert molding machines



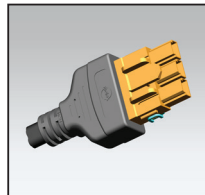
Mold Equipment



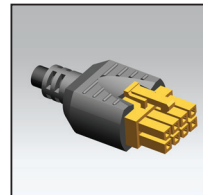
Production Assembly Line

Overmold Design Capability

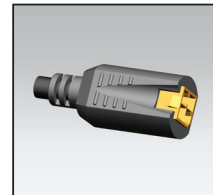
- Siemens NX* software used for customized design



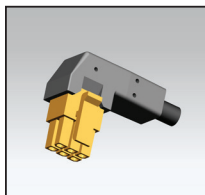
Mini-Fit Sr.™ 3-Circuit Receptacle



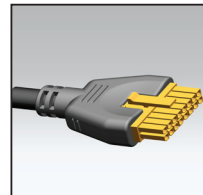
Mini-Fit® 4-Circuit Receptacle



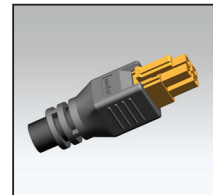
Micro-Fit™ 4-Circuit Plug



Micro-Fit™ 4-Circuit Receptacle



Micro-Fit™ 16-Circuit Receptacle



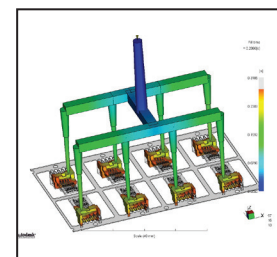
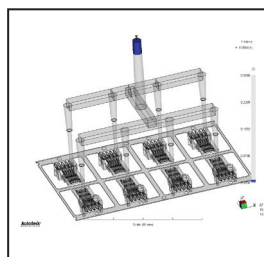
Mega-Fit® 4-Circuit Receptacle

Mold Flow Analysis

Mold flow analysis used to simulate tooling status before kick-off

Reduce tooling lead time from kick-off to FAI qualification

- Reduce non-value modification tooling cost
- Key parameter simulation: Gate/surface shrinkage/temperature/meld line/pressure/mold flow



Straight Overmold, Dual Row

Description	Circuit Size											
	2	4	6	8	10	12	14	16	18	20	22	24
Receptacle Housing		X	X	X								
Plug Housing		X	X		X	X	X					

Straight Overmold, Single Row

Description	Circuit Size				
	2	3	4	5	6
Receptacle Housing		X	X		
Plug Housing		X			

Right Angle Overmold, Single Row

Description	Circuit Size				
	2	3	4	5	6
Receptacle Housing					

Mini-Fit® Blind Mate Interface (BMI)

Straight Overmold with Jackscrews, Dual Row

Description	Circuit Size											
	2	4	6	8	10	12	14	16	18	20	22	24
Receptacle Housing					X							
Plug Housing					X				X			

Micro-Fit™

Straight Overmold, Dual Row

[illegible]

Right Angle Overmold, Dual Row

[illegible]

Right Side Exit Overmold, Dual Row

[illegible]

Micro-Fit™

Straight Overmold, Single Row

Description	Circuit Size										
	2	3	4	5	6	7	8	9	10	11	12
Receptacle Housing	X	X	X	X							
Plug Housing											

Right Angle Overmold, Single Row

Description	Circuit Size										
	2	3	4	5	6	7	8	9	10	11	12
Receptacle Housing		X		X							
Plug Housing											

Left Side Exit Overmold, Single

Description	Circuit Size										
	2	3	4	5	6	7	8	9	10	11	12
Receptacle Housing				X							
Plug Housing											

Micro-Fit™ Blind Mate Interface (BMI)

Description	Circuit Size											
	2	4	6	8	10	12	14	16	18	20	22	24
Receptacle Housing												X

Mega-Fit®

Straight Overmold, Dual Row

Description	Circuit Size											
	2	4	6	8	10	12	14	16	18	20	22	24
Receptacle Housing		X										
Plug Housing												

Mini-Fit Sr.™

Straight Overmold, Single Row

Description	Circuit Size				
	2	3	4	5	6
Receptacle Housing	X	X			
Plug Housing					

Right Angle Overmold, Single Row

Description	Circuit Size				
	2	3	4	5	6
Receptacle Housing		X			
Plug Housing					

EXTreme Guardian™

Straight Overmold with Jackscrews

Description	Circuit Size	
	2	3
Receptacle Housing	X	X
Plug Housing		



Many applications need overmolded cables to address challenging requirements. Molex offers a wide array of cable assembly capabilities – from simple and discrete point-to-point assemblies, to complex and multi-faceted harnesses, including standard overmolds to newly designed and custom overmold solutions. With our extensive design and manufacturing expertise, Molex can meet the unique challenges of the most demanding cable assembly applications.

www.molex.com/link/mini_fit_oa.html

Molex is a registered trademark of Molex, LLC in the United States of America and may be registered in other jurisdictions. The indication of trademark status reflects the status of trademarks owned by Molex, LLC in the U.S.A., and the status of these trademarks may be different in other jurisdictions.

molex[®]
one company › a world of innovation