

## Type 2DT Evaluation Kit

## Evaluate LoRa® Edge module

The Type 2DT evaluation kit allows module testing and software development. The evaluation kit includes pin header for easy connection to a host MCU platform.

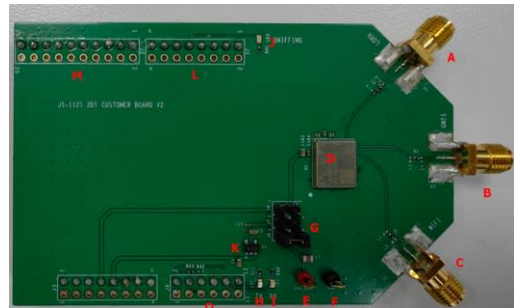
## Features

- Type 2DT module ( includes Semtech LR1110 )
- Sub-GHz LoRa and (G)FSK modulation
- Long range FHSS modulator
- Multi-constellation GNSS scanner
- Passive Wi-Fi AP MAC address scanner
- LoRa Cloud Geolocation capabilities

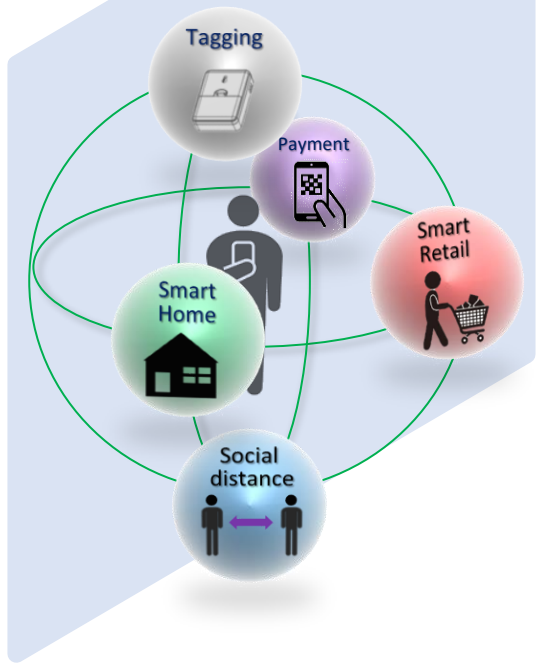
## Benefits

- Drop-in replacement to Semtech LR1110 Mbed Shield
- Arduino interface
- Kit includes all antenna
- Switch for power supply selection
- Design guide available on myMurata

( <https://my.murata.com/en/home> )



Evaluation board ( antenna not shown )



Part Number	LBAA0XV2DT-158EVK
LoRa Frequency	860MHz to 930MHz
GNSS	GPS, BeiDou
Wi-Fi	802.11bgn Wi-Fi passive scanning
Dimensions	89 x 58 mm
Supply Voltage (V)	1.8 to 3.6
Applications	Asset management and tracking