

Onanon's *MagConnect® | HV* is performance engineered to be the most intuitive interconnect in the world. Its unique magnetic safety latch feature is ideal for medical applications, where time, precision, and quality are most critical. MagConnect® | HV has been tested to be able to withstand electrically demanding medical procedures, such as IVL and PFA. MagConnect® has been used in applications with low & high voltages, sensitive EMI, shock & vibration environments, and integration of intelligent electronics.

- **2 to 15 pin capacity**
- **Intuitive and self-mating**
- **Magnetic safety de-latching**
- **Customizable for reusable or single use applications**
- **Easily add components such as EEPROMs, resistors and capacitors**
- **EMI/RFI Safe**
- **Low (<12v) & High (>7000v) Voltage Safe**
- **Rugged use in outdoor wearables**
- **VF/HF/RF Safe**



Options To Add Your Logo Here

Specifications

Mechanical

Mating Type: Magnetic
Mating Cycles: 10k Min
Mating Forces:
 Insertion: Magnetic
 Removal: Up to 3.3 lbf

Electrical

Operating Voltage:
 7kVDC for HV Pins
 200VDC for LV Pins
Operating Current: 3A

Environmental

Sterilizable: Gamma, EtO
Chemical Resistance: Common cleaning solvents
Finger Safety: IEC 60601-1
Storage & Operating Temp:
 0-150°C

Compatibility

Contacts: 5 HV Pins; 10 LV Pins
Plug & Panel Mount
Accepted Wire Gauges:
 26-50 AWG for HV Pins
 26-50AWG for LV Pins
Plug Cable Jacket OD: 0.260" Max
Contact Termination: Solder



Self-Mating

Intuitive tear drop and magnetic interlock ensures a robust, safe, and reliable connection



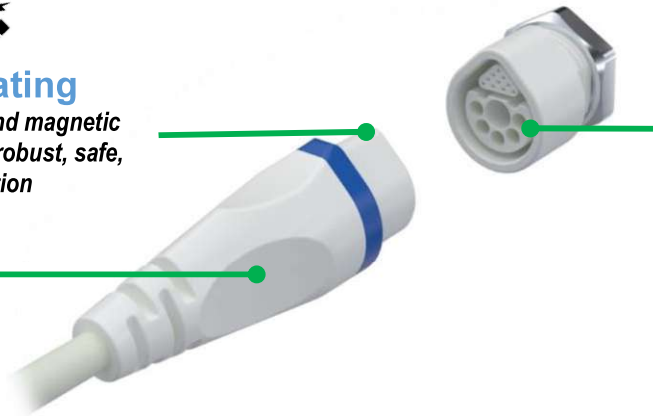
Sterilizable

Chemical-resistant materials are easy to clean and withstand repeated wipe-downs using common hospital disinfectants



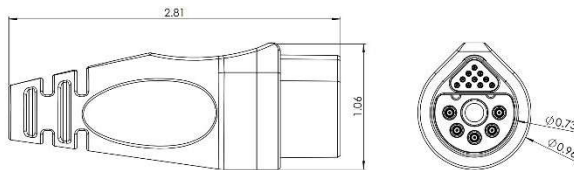
High Voltage Capability

Adequate creepage and clearance distances to ensure safe, high voltage procedures

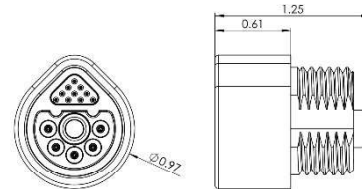


Dimensions

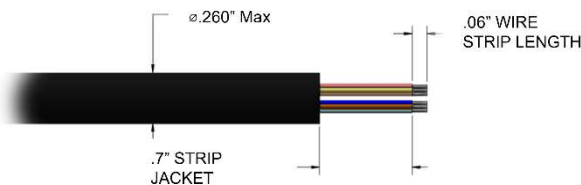
Plug



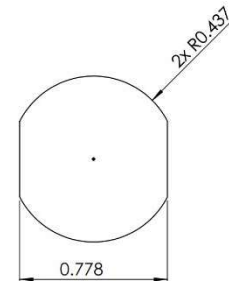
Panel Mount Receptacle



Recommended Cable Specifications



Recommended Panel Cutout



Units are in inches
Contact Sales for unspecified dimensions

Materials & Assembly

Plug Assembly

Plug Housing: Thermoplastic Polyester
Retaining Cap: Thermoplastic Polyester
Pins: Gold Plated Brass Alloy
Magnet: Nickel Plated Neodymium
Slip-On Boot: Thermoplastic Polyurethane

Required Assembly: Assemble connector body after terminating wires

Panel Mount Receptacle

Insulator Insert: Thermoplastic Polyester
Metal Shell: Chromium Plated Brass Alloy
Pins: Gold Plated Brass Alloy
Magnet: Nickel Plated Neodymium

Required Assembly: Solder a PCB or flex assembly

Onanon Connector Series MagConnect® | HV



Plug

282-A002-XXXX-X

NO. OF LV CONTACTS
05, 10

NO. OF HV CONTACTS
2, 5

CONTACT TYPE
S – SOLDER CUP
R – ROBOSOLDER®

RECEPTACLE COLOR

B – BLACK
G – GREY
R – RED
Y – YELLOW
N – GREEN
W – WHITE
U – BLUE

Contact Sales for Custom Configurations



Panel Mount Receptacle

282-A001-XXXX-X-XXX-X

NO. OF LV CONTACTS
05, 10

NO. OF HV CONTACTS
2, 5

CONTACT TYPE
S – SOLDER CUP
R – ROBOSOLDER®

PLUG & BOOT COLOR

B – BLACK N – GREEN
G – GREY W – WHITE
R – RED U – BLUE
Y – YELLOW

BOOT ID

270 = $\varnothing 0.270"$; 103 = $\varnothing 0.130"$

INDICATOR COLOR

B – BLACK N – GREEN
G – GREY W – WHITE
R – RED U – BLUE
Y – YELLOW

Contact Sales for Custom Configurations

Custom Options Available:

Reach out to our sales team about laser-engraved logos, personalized color options, high volume orders, and end-to-end custom cable assemblies, including our integrated SmartConnect™ capabilities.

Contact Us: sales@onanon.com | (408) 262-8990 | www.onanon.com