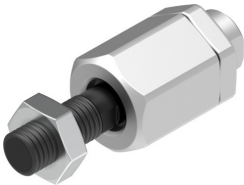


Self-aligning rod coupler FK-M6

Part number: 2061



 [General operating condition](#)

Data sheet

Feature	Value
Size	M6
Corrosion resistance class CRC	2 - Moderate corrosion stress
LABS (PWIS) conformity	VDMA24364-B2-L
Suitability for the production of Li-ion batteries	Metals with more than 1% by mass of copper are excluded from use. Exceptions are printed circuit boards, cables, electrical plug connectors and coils
Ambient temperature	-40 °C ... 150 °C
Product weight	24 g
Note on materials	RoHS-compliant
Material bushing	Galvanised steel
Material housing	Galvanised steel
Material ball bolt	Case-hardened steel
Material spherical washer	Case-hardened steel
Material nut	Galvanised steel