

New! SRO Series Rope Pull Switches

Metal or Plastic Body - Latching or Momentary

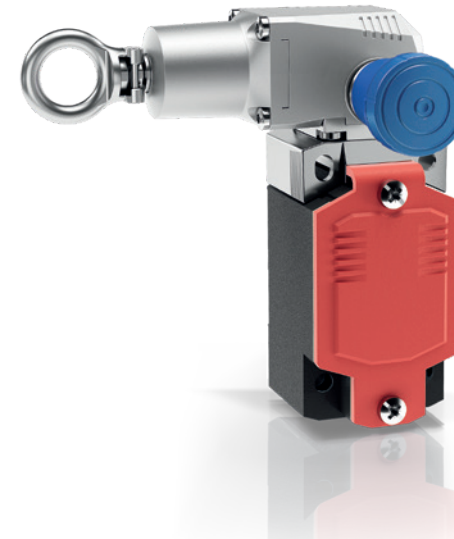
When it comes to maximum safety on the assembly line, in the production line, or directly at the machine, the Safety Rope Pull Switches from BERNSTEIN AG are a reliable and proven solution. BERNSTEIN has now added a particularly small and compact version to the product family of safety rope pull switches.

Thanks to its modular design, the new **SRO (Safety Rope Pull)** is extremely space-saving as well as being highly versatile. The modular principle has the advantage of always being able to offer exactly the right product for a specific customer application.



PRODUCT-HIGHLIGHTS

- As metal or thermoplastic variant – or as a combination of both
- Compact design for confined spaces
- Emergency stop button upon request
- Max. rope length of 30 m



Technical Data

- Metal- or thermoplastic enclosure
- up to 4 contacts
- Ambient temperature: –30° to +75 °C
- Approvals:



in preparation



in preparation



in preparation