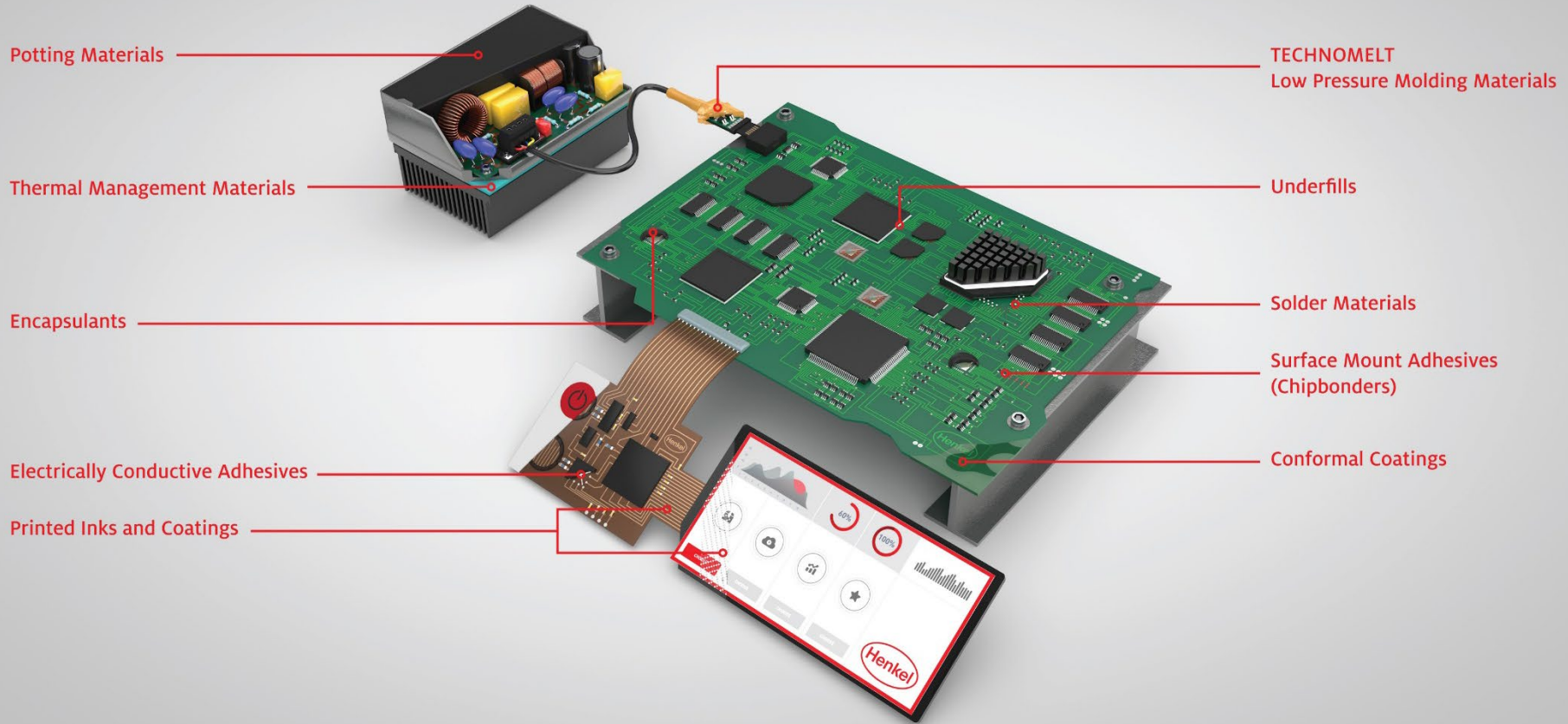
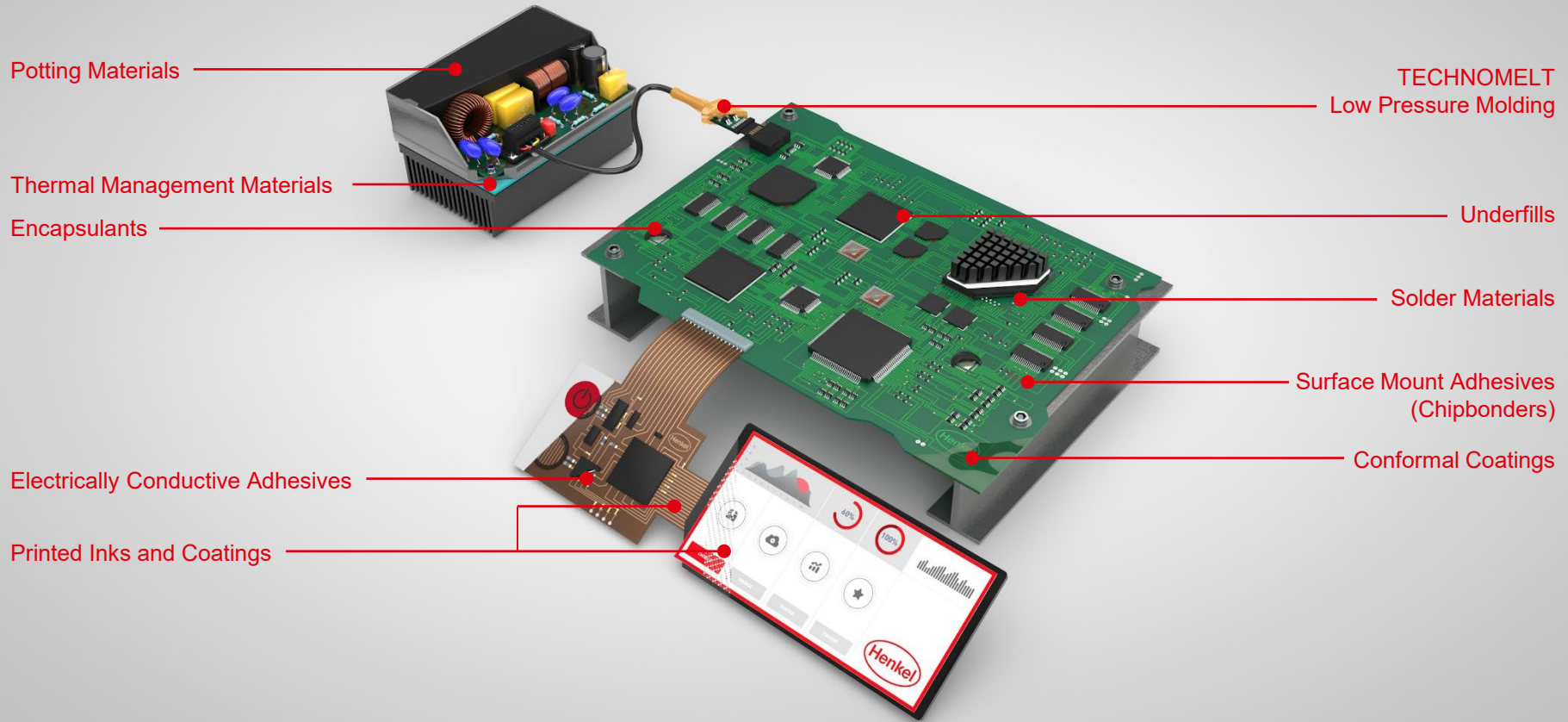


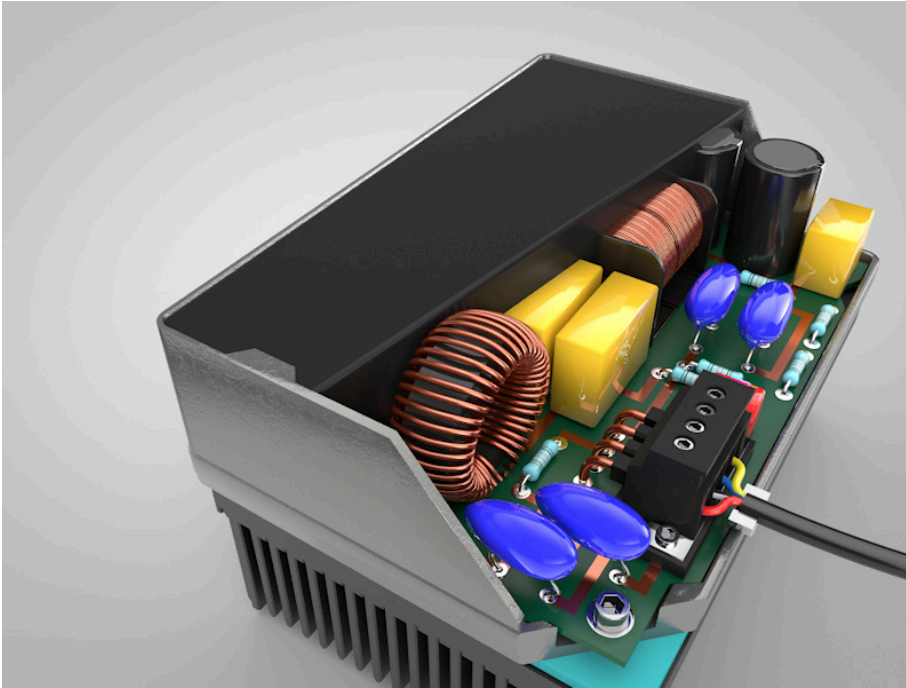
Solutions Across the Board



Solutions Across the Board



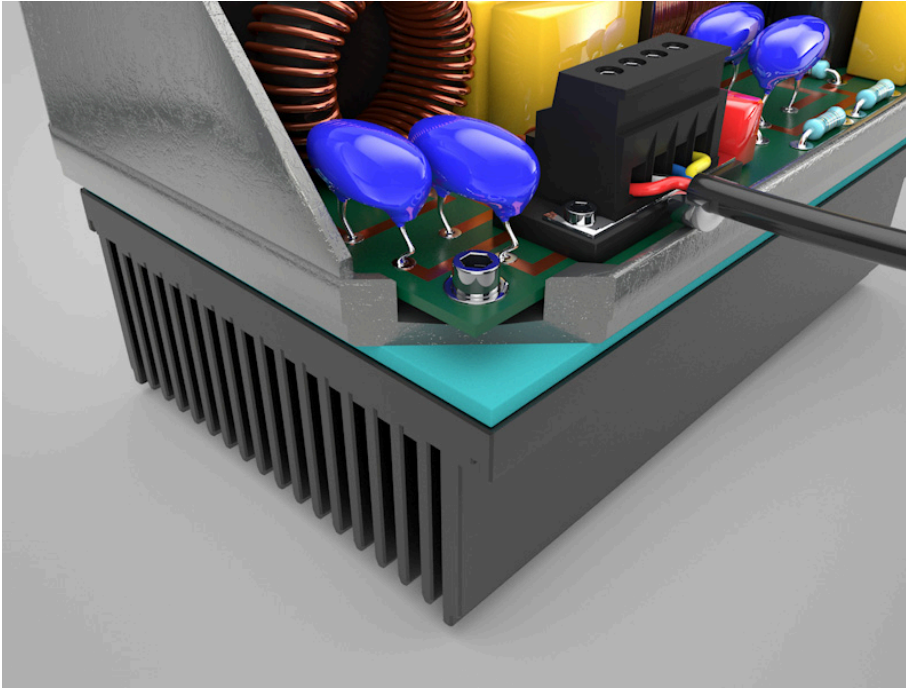
Potting Materials



Protects PCBs and electrical devices from vibration and shock, enhances their mechanical strength and offers electrical insulation.

- Urethanes / Operating Temperature Range: -55° to 125°C
- Epoxies / Operating Temperature Range: -40° to 185°C
- Silicones / Operating Temperature Range: -65° to 250°C

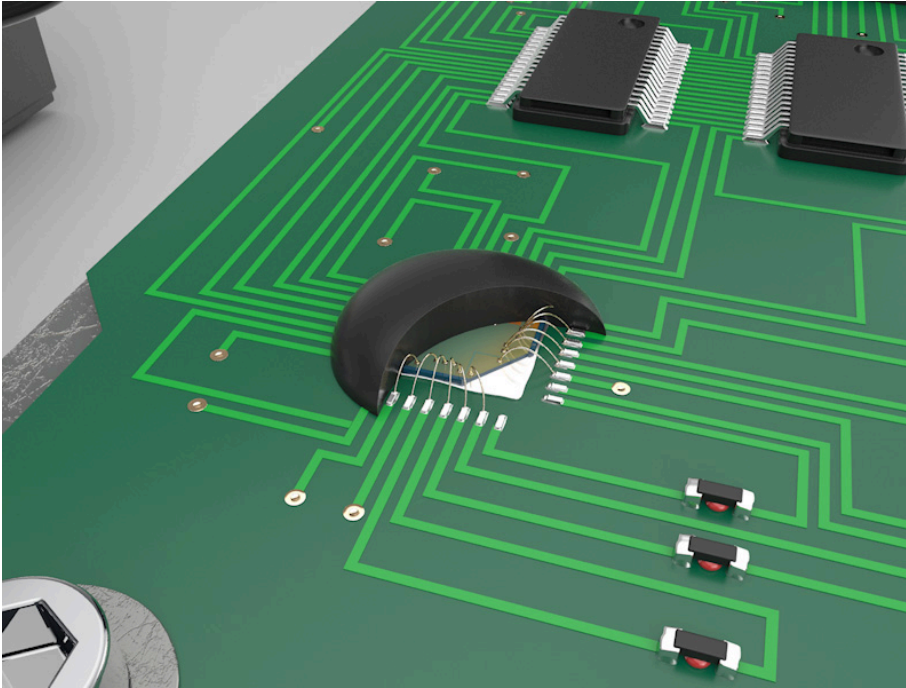
Thermal Management Materials



Supplies product solutions to control and manage heat in electronic assemblies and printed circuit boards.

- Sil-Pads
- Gap Pads
- Liquid-Dispensed Materials
- Bond-Ply Materials
- Phase-Change Materials

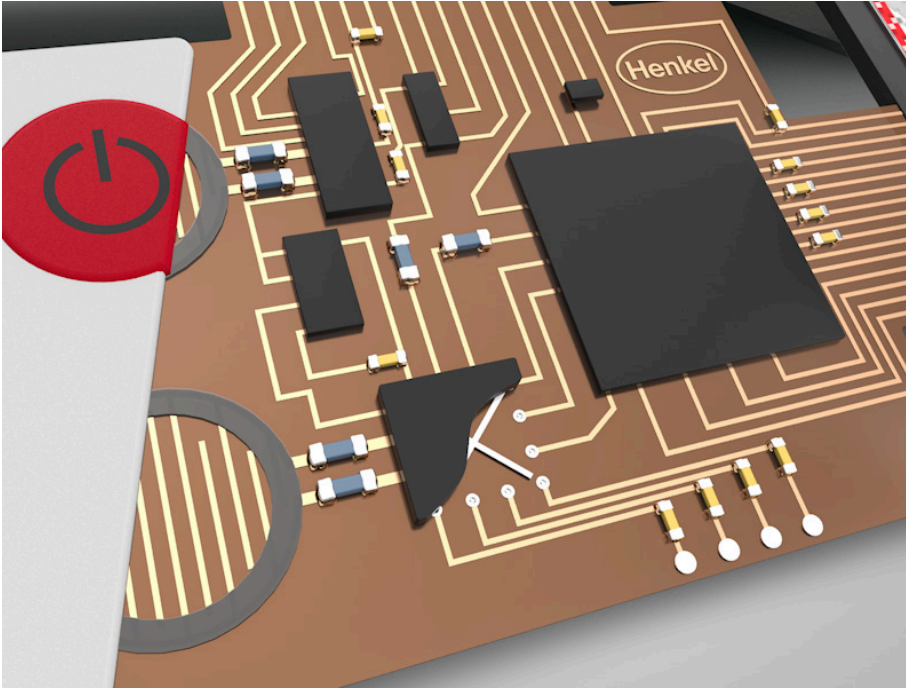
Encapsulants



Provides environmental protection and adds mechanical strength to wire bonded devices.

- Dam
- Fill
- Glob Tops

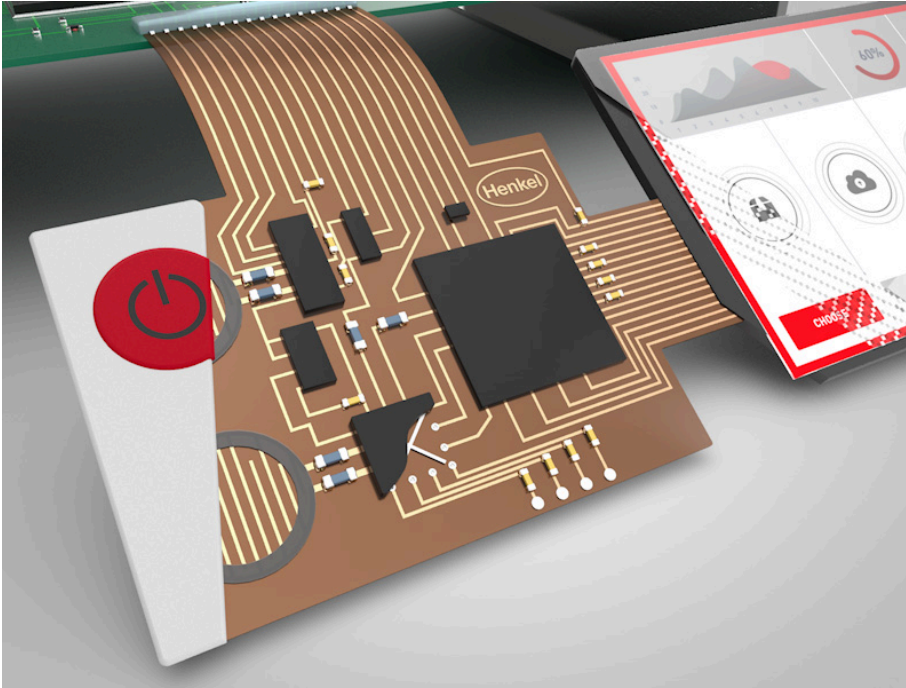
Electrically Conductive Adhesives



Metal-filled polymer used to bond two surfaces and create a pathway for electric current.

- Snap Cure
- Heat Cure
- Room-Temperature Cure

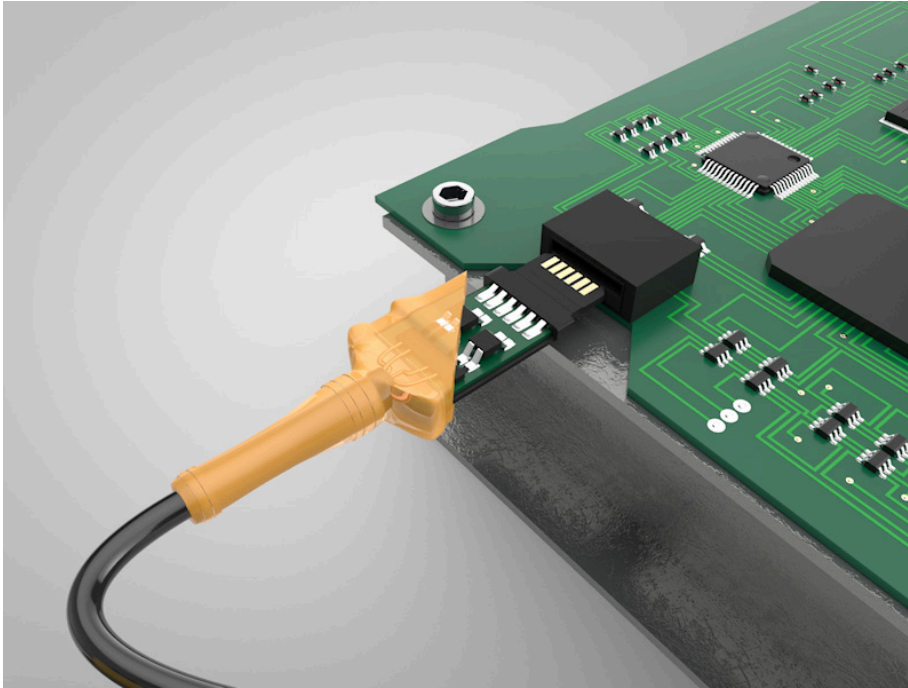
Printed Inks and Coatings



Selectively coats on a variety of flexible and rigid substrates, via screen, flexographic and rotogravure printing methods.

- Conductive Inks
- Blendable Resistive Inks
- Dielectric Inks
- Shielding Paints
- HeatSeal®

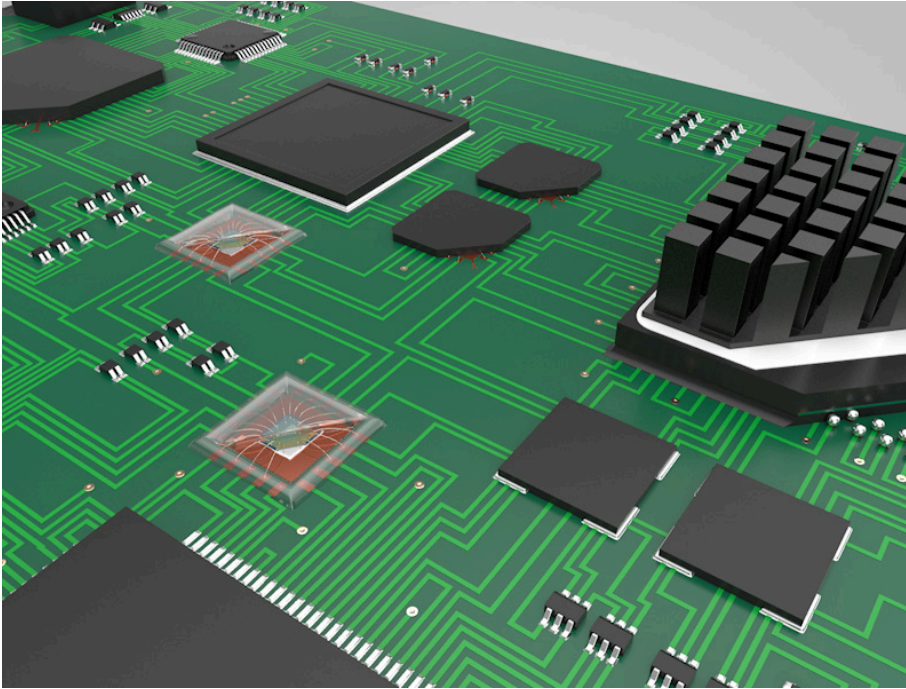
TECHNOMELT Low Pressure Molding



Delivers superior sealing adhesion and excellent temperature, environmental and solvent resistance. The simplified process reduces cycle times, and the encapsulant material protects sensitive electronics.

- Adhesion to Plastics
- Conductive
- High-Temperature Resistant
- Increased Hardness
- Solvent Resistant
- Specialty Technologies
- UV Resistant
- Peelable Mask

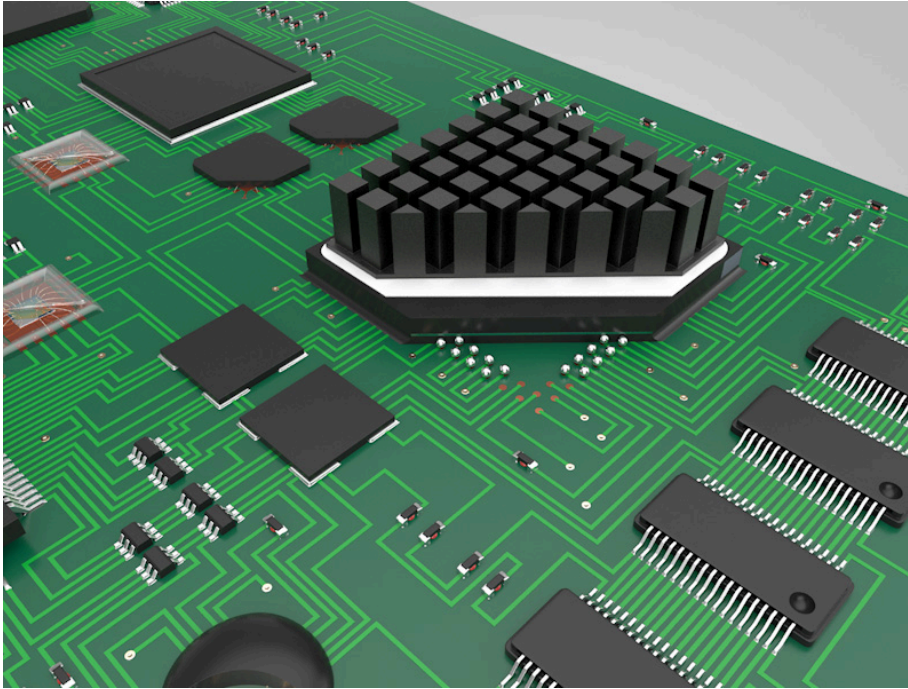
Underfills



Improves reliability performance by redistributing stress away from the solder interconnects as well as enhancing mechanical performance.

- Non-reworkable
- Reworkable
- Partial Underfill

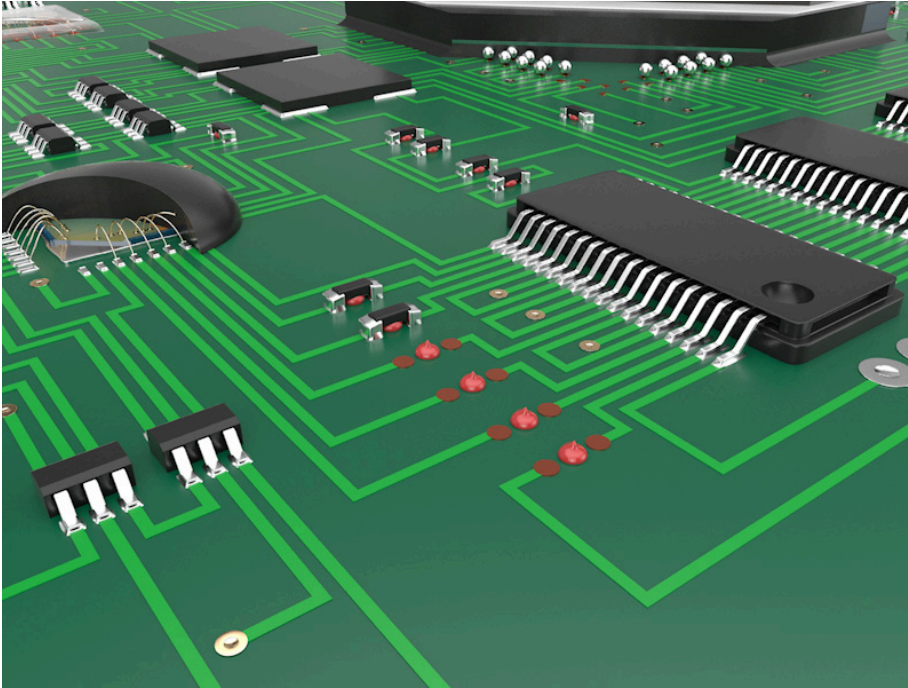
Solder Materials



Offers high reliability, superior processability and advanced capability for almost any application – from mainstream SMT to next-generation miniaturized assemblies.

- Bar
- Paste
- Wire
- Preforms

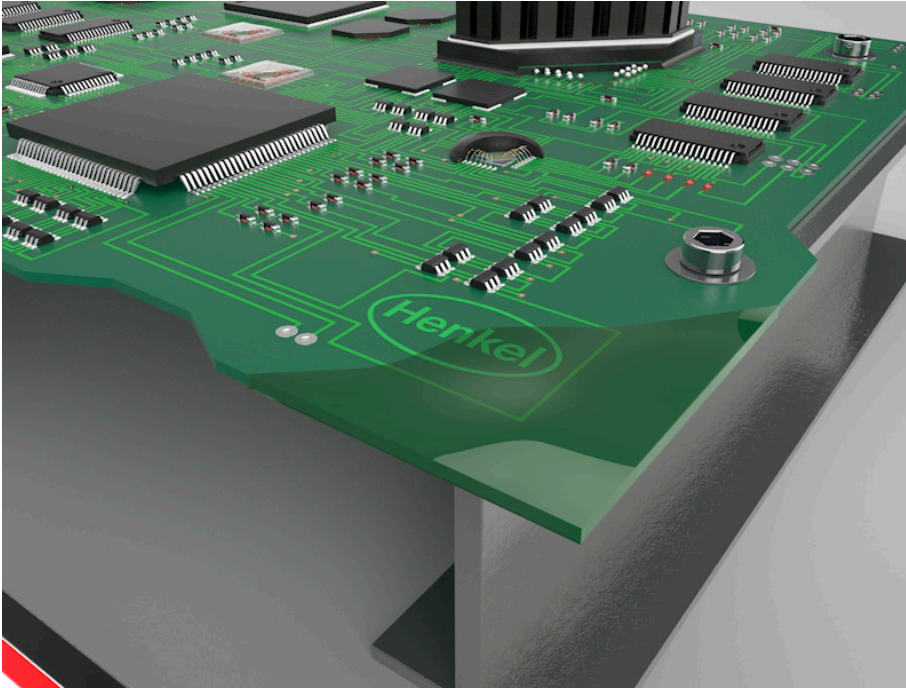
Surface Mount Adhesives (Chipbonders)



Secures surface mount components in place during the wave soldering process.

- Stencil Printing
- Dispensing
- Jetting

Conformal Coatings



Protects PCBs from thermal shock, corrosive materials, and a variety of other adverse conditions to ensure long product life cycles in harsh marine, automotive, aerospace and consumer electronics applications.

- Silicones / Operating Temperature Range: -40° to 150°C
- Polyurethanes / Operating Temperature Range: -40° to 135°C
- Acrylics / Operating Temperature Range: -65° to 125°C
- Urethanes / Operating Temperature Range: -40° to 110°C