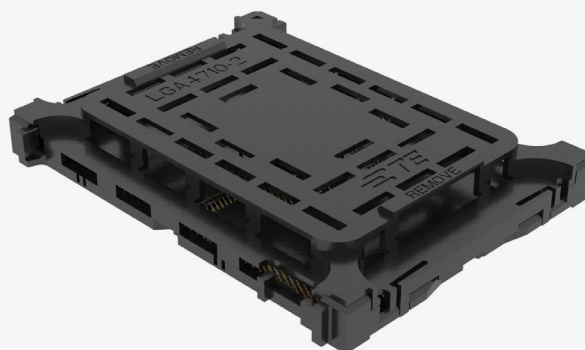


INTRODUCING LGA 4710 SOCKETS

- PCIe Generation 5 Support
- DDR5 8-Channel Capable
- Greater Number of Memory Channels (4710 pins)



TE Connectivity's (TE) LGA 4710 sockets for next-generation server processors adopt the same form-factor as for LGA 4677 and provide more connections between the main board and the processor. Designed for the needs of server-grade top processor players, these sockets support 8-channel DDR5 and PCIe 5.0 technologies, enabling the latest server architectures for data centers and Artificial Intelligence (AI) applications.

APPLICATIONS

- Data centers
- Hyperscale
- Next generation servers
- AI / Machine learning
- Edge computing

KEY BENEFITS

- Delivers an aggregate link bandwidth of 128 Gigabits per second in x16 configuration. Supports higher speed networking protocols and higher speed interconnections between system devices
- Greater number of memory channels enable speed intensive applications such as artificial intelligence and machine learning
- Supports 8-channel DDR5 DRAM memory up to 6400 MT/s, to increased performance and reduced overall power consumption that may lead to cost savings
- Supports PCIe 5.0 technology – faster speeds and more efficiency
- Qualified and tested durability, environmental resistance, shock and vibration
- Supports auto-assembly processes to facilitate ease of installation and limit possibility of rework

LEARN MORE

- [Landing page](#)
- Brochure [\(English\)](#) [\(Chinese\)](#)