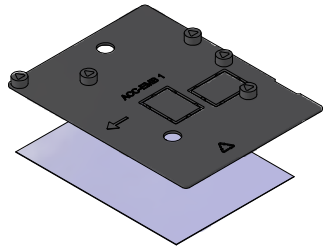
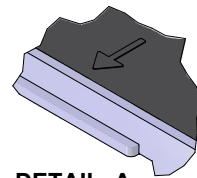
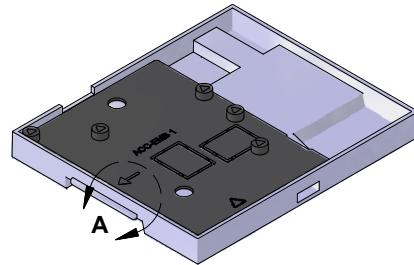


1. place adhesive pad
on board holder

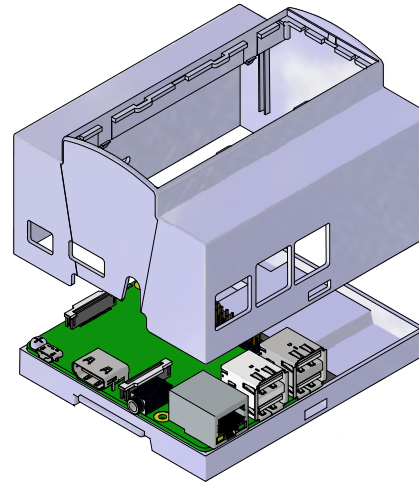


2. ENSURE PROPER ORIENTATION
BEFORE REMOVING ADHESIVE.
PLACE ADHESIVE BOARD
HOLDER INTO BASE, WITH THE
ARROW TOUCHING THE WALL.

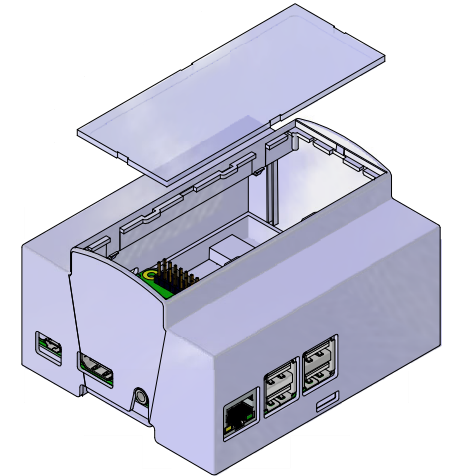


DETAIL A

4. INSTALL COVER

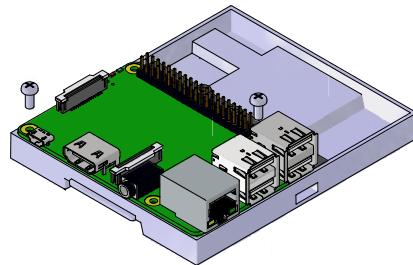
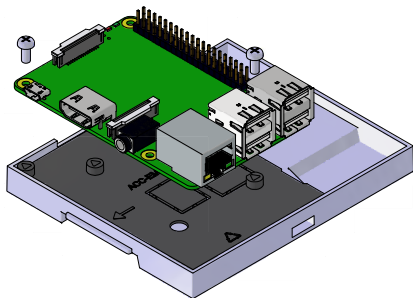


5. INSTALL CLEAR
COVER PLATE

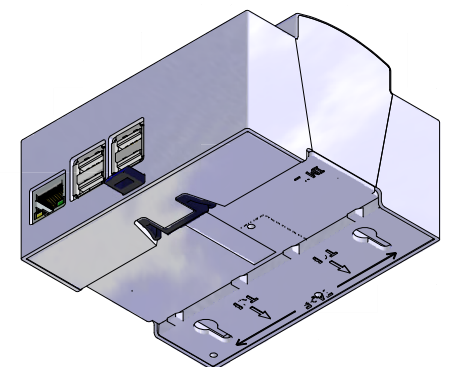
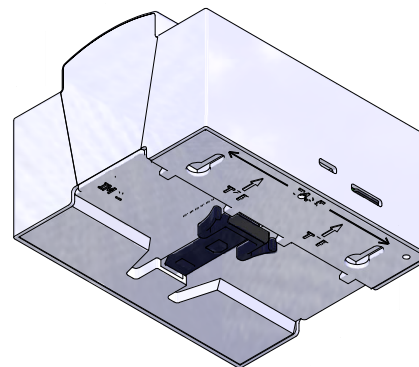


3. PLACE BOARD AND
INSTALL SCREWS.

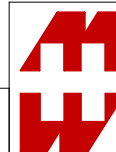
Recommended PCB screw torque
28.0-35.5 ozf-in (20-25 cN-m)



6. INSTALL DIN RAIL CLIP



Dimensions:
mm
[inches]



HAMMOND
MANUFACTURING®
INSTRUCTIONS
1597KITS
www.hammondmfg.com