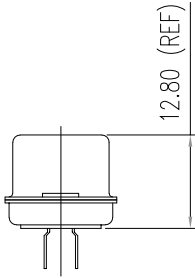
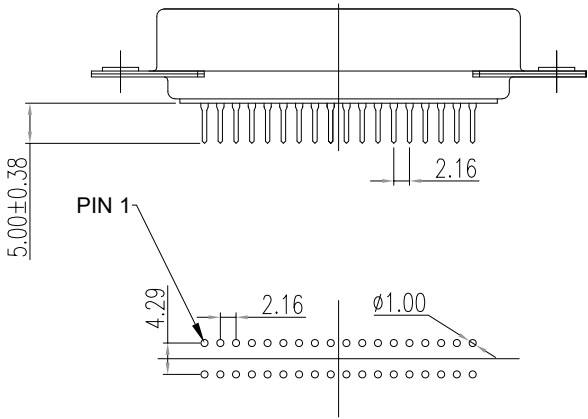
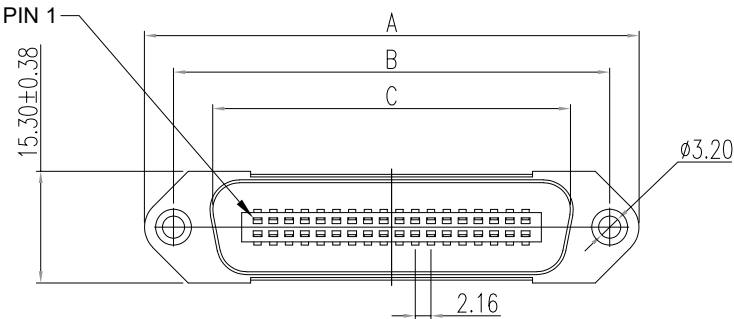


DIMENSIONS(mm)			
SIZE	A±0.38	B±0.25	C±0.25
14	44.00	36.00	25.50
24	54.70	46.70	36.20
36	67.70	59.70	49.00
50	82.70	74.70	64.50



RECOMMENDED P.C.B LAYOUT  
36P SHOWN

SPECIFICATIONS:

ELECTRICAL:

CURRENT RATING:	1 AMPS
INSULATION RESISTANCE:	1,000 MΩ MIN. @ 500 VDC
DIELECTRIC WITHSTANDING VOLTAGE:	1,000 VAC FOR 1 MINUTE
CONTACT RESISTANCE:	30 mΩ MAX.
OPERATING TEMPERATURE:	-55°C TO +105°C

MATERIALS:

INSULATION:	PBT, UL94 V-0 RATED
CONTACTS:	PHOSPHOR BRONZE
CONTACT PLATING:	GOLD FLASH IN MATING AREA BRIGHT TIN IN SOLDER AREA
SHELL:	STEEL, NICKEL PLATED

SERIES	111-YYY-1
POSITIONS	1 3 L 00 1
014	
024	
036	
050	
GENDER	
1 = MALE	
TERMINATION	
1 = DIP SOLDER	
SHELL PLATING	
3 = NICKEL	
HARDWARE	
00 = NO HARDWARE	
PLATING	
1 = GOLD FLASH	

RoHS COMPLIANT



THESE DRAWINGS AND SPECIFICATIONS ARE THE PROPERTY OF NorComp AND SHALL NOT BE REPRODUCED, COPIED OR USED AS THE BASIS FOR THE MANUFACTURE OR SALE OF APPARATUS WITHOUT WRITTEN PERMISSION.

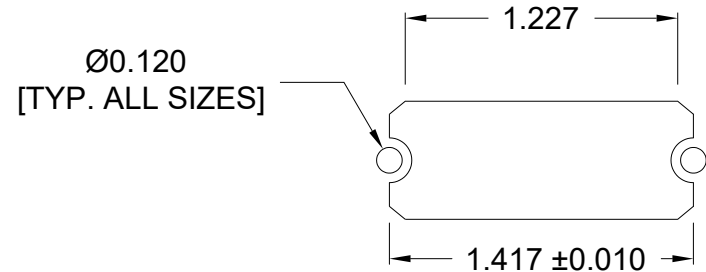
DRAWN:  
WAYNE ROBBINS  
DATE:  
09/21/1998

UNITS = mm

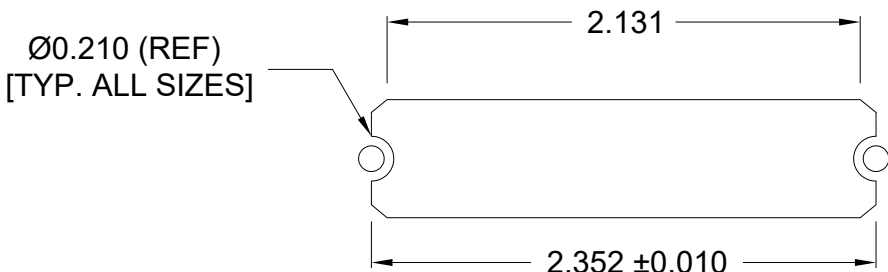
DO NOT SCALE FROM DRAWING

NorComp

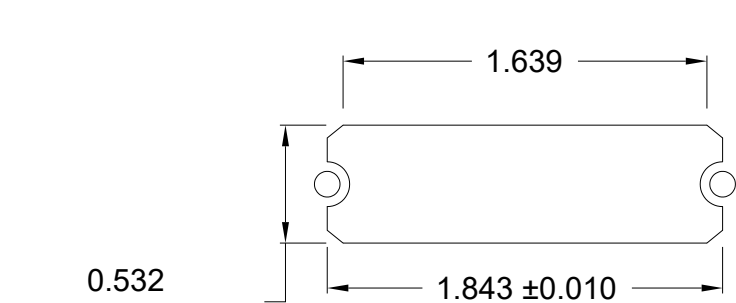
SCALE: NTS	SHEET 1 OF 2	REV 13
DWG NO.	111-YYY-113L001	



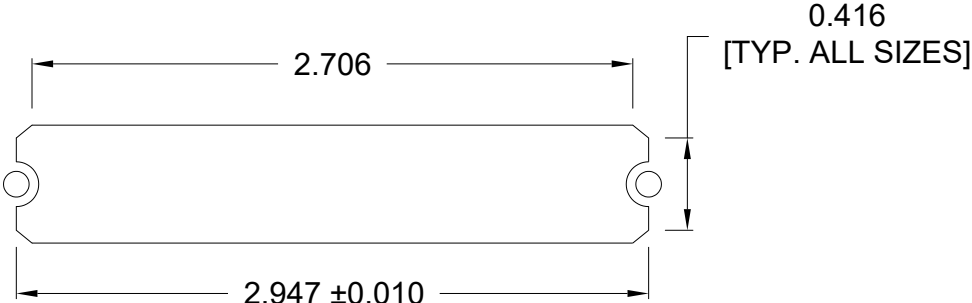
14 POSITION



36 POSITION



24 POSITION



50 POSITION

RoHS COMPLIANT



THESE DRAWINGS AND SPECIFICATIONS ARE THE PROPERTY OF NorComp AND SHALL NOT BE REPRODUCED, COPIED OR USED AS THE BASIS FOR THE MANUFACTURE OR SALE OF APPARATUS WITHOUT WRITTEN PERMISSION.	DRAWN: WAYNE ROBBINS
	DATE: 09/21/1998

UNITS = inch

DO NOT SCALE FROM DRAWING

NorComp

SCALE: NTS	SHEET 2 OF 2	REV 13
DWG NO. 111-YYY-113L001		