

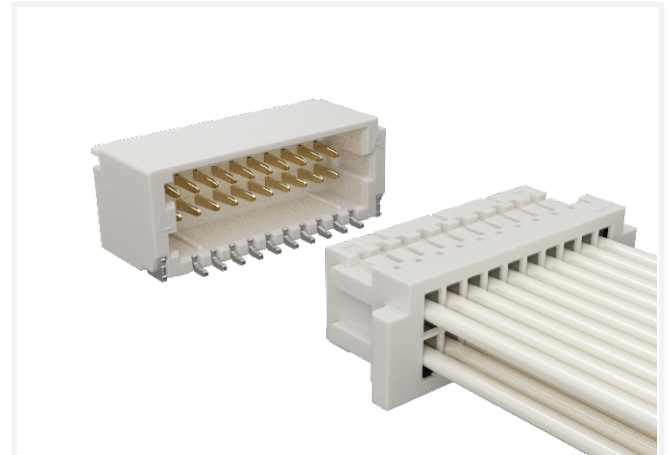
## FitMate® 1.00mm Double Row

### MODULAR AND FINE PITCH WIRE-TO-BOARD SOLUTION

Designed for the finest pitch wire-to-board applications, Amphenol's FitMate® 1.00mm is the ideal solution for devices that require compact and low-profile connectors.

With a wire gauge range from 32AWG-28AWG, these connectors are available in double row vertical SMT and right angle SMT configurations. These connectors come with locking features to ensure contact reliability.

- Saves space with a 1.00mm pitch
- Current rating up to 1A
- Accommodates wire range from 32AWG-28AWG



#### TARGET MARKETS



#### FEATURES

- 1.00mm pitch wire-to-board solution
- Low-profile design
- UL94V-0 flammability rated PA9T material
- RoHS-compliant and lead-free
- Halogen-free resin material

#### BENEFITS

- Saves space with reduced PCB footprint
- Saves PCB space
- High flammability rating
- Meets health and safety requirements
- Meets environmental requirements

## TECHNICAL INFORMATION

### MATERIAL

- Header:
  - Housing: PA9T, Natural UL94V-0
  - Connector: Copper Alloy with Tin/Gold flash plating
- Receptacle: PA66, Natural UL94V-0
- Crimping Terminal: Phosphor Bronze

### ELECTRICAL PERFORMANCE

- Insulation Resistance: 100M $\Omega$  min.
- Voltage Rating: 50VAC (RMS)/DC
- Contact Resistance: 20m $\Omega$  max. (initial)
- Current Rating: 1A

### MECHANICAL PERFORMANCE

- Durability: 30 cycles
- Mating Force: Refer to product spec.
- Unmating Force: Refer to product spec.

### ENVIRONMENTAL

- Operating Temperature Range: -25°C to +85°C

### APPROVALS AND CERTIFICATIONS

- UL Approval: Pending

### SPECIFICATIONS

- Product Specification: GS-12-1834
- Packaging Specification: Refer to package drawing

### PACKAGING

- PCB Header: Tape/Reel
- Receptacle Housing: Bag
- Crimping Terminal: Reel

### TARGET MARKETS/APPLICATIONS



Cooking Machine  
Office Equipment  
Test & Measurement  
Point-of-sale Terminal  
Portable Terminal



Smart Home Device  
Vacuum Cleaner Robot

## PART NUMBERS

Description	Part Numbers
FitMate® 1.00mm Vertical Header, SMT, Double Row	10164212*
FitMate® 1.00mm Right Angle Header, SMT, Double Row	10164213*
FitMate® 1.00mm Receptacle Housing, Double Row	10164210*
FitMate® 1.00mm Crimping Terminal, Double Row	10157378*

\*denotes base part number. Find part number details using the search box on [www.amphenol-cs.com](http://www.amphenol-cs.com)

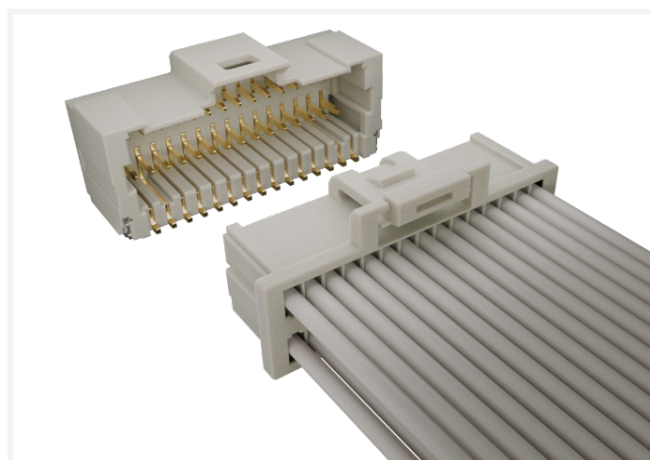
## FitMate® 1.00mm Double Row with Active Latch

### MODULAR AND FINE PITCH WIRE-TO-BOARD SOLUTION

Designed for the finest pitch wire-to-board applications, Amphenol's FitMate® 1.00mm is the ideal solution for devices that require compact and low-profile connectors.

With wire gauge range from 32AWG-28AWG, these connectors are available in double-row vertical SMT and right-angle SMT configurations. These connectors come with an active latch to provide enhanced contact reliability.

- Saves space with a 1.00mm pitch
- Current rating up to 1A
- Accommodates wire range from 32AWG-28AWG



#### TARGET MARKETS



#### FEATURES

- 1.00mm pitch wire-to-board solution
- Low-profile design
- UL94V-0 flammability rated PA4T material
- RoHS compliant and lead-free
- Halogen-free resin material

#### BENEFITS

- Saves space with reduced PCB footprint
- Saves PCB space
- High flammability rating
- Meets health and safety requirements
- Meets environmental requirements

## TECHNICAL INFORMATION

### MATERIAL

- Header:
  - Housing: PA4T, Natural/Black UL94V-0
  - Connector: Copper Alloy with Tin/ Gold Flash /15μin Au / 30μin Au Plating
- Receptacle: PA66, Natural/Black UL94V-0
- Crimping Terminal: Phosphor Bronze

### ELECTRICAL PERFORMANCE

- Insulation Resistance: 100MΩ min.
- Voltage Rating: 50VAC (RMS)/DC
- Contact Resistance: 20mΩ max. (initial)
- Current Rating: 1A

### MECHANICAL PERFORMANCE

- Durability: 30 cycles
- Mating Force: Refer to product spec.
- Unmating Force: Refer to product spec.

### ENVIRONMENTAL

- Operating Temperature Range: -40°C to +105°C

### APPROVALS AND CERTIFICATIONS

- UL Approval: Pending

### SPECIFICATIONS

- Product Specification: GS-12-1642
- Packaging Specification: Refer to package drawing

### PACKAGING

- PCB Header: Tape/Reel
- Receptacle Housing: Bag
- Crimping Terminal: Reel

### TARGET MARKETS/APPLICATIONS



Cooking Machine  
Office Equipment  
Test & Measurement  
Point-of-sale Terminal  
Portable Terminal



Smart Home Device  
Vacuum Cleaner Robot

## PART NUMBERS

Description	Part Numbers
FitMate® 1.00mm Vertical Header, SMT, Double Row, with Active Latch	10157096*
FitMate® 1.00mm Right Angle Header, SMT, Double Row, with Active Latch	10157759*
FitMate® 1.00mm Receptacle Housing, Double Row, with Active Latch	10157097*
FitMate® 1.00mm Crimping Terminal, Double Row, with Active Latch	10157098*

\*denotes base part number. Find part number details using the search box on [www.amphenol-cs.com](http://www.amphenol-cs.com)

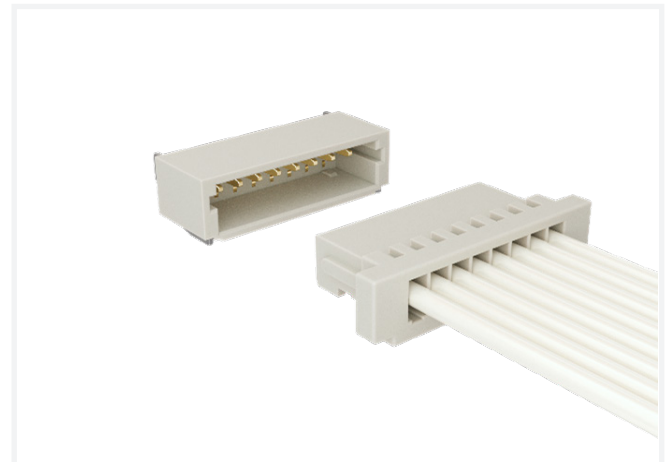
## FitMate® 1.00mm Single Row

### MODULAR AND FINE PITCH WIRE-TO-BOARD SOLUTION

Designed for the finest pitch wire-to-board applications, Amphenol's FitMate® 1.00mm is the ideal solution for devices that require compact and low-profile connectors.

With a wire gauge range from 32AWG-28AWG, these connectors are available in single-row vertical SMT and right-angle SMT configurations. These connectors come with locking features to ensure contact reliability.

- Saves space with a 1.00mm pitch
- Current rating up to 1A
- Accommodates wire range from 32AWG-28AWG



#### TARGET MARKETS



#### FEATURES

- 1.00mm pitch wire-to-board solution
- Low-profile design
- UL94V-0 flammability rated LCP material
- RoHS compliant and lead-free
- Halogen-free resin material

#### BENEFITS

- Saves space with reduced PCB footprint
- Saves PCB space
- High flammability rating
- Meets health and safety requirements
- Meets environmental requirements

## TECHNICAL INFORMATION

### MATERIAL

- Header:
  - Housing: LCP, Natural UL94V-0
  - Connector: Copper Alloy with Tin/Gold flash plating
- Receptacle: PA66, Natural UL94V-0
- Crimping Terminal: Phosphor Bronze

### ELECTRICAL PERFORMANCE

- Insulation Resistance: 100M $\Omega$  min.
- Voltage Rating: 50VAC (RMS)/DC
- Contact Resistance: 20m $\Omega$  max. (initial)
- Current Rating: 1A

### MECHANICAL PERFORMANCE

- Durability: 30 cycles
- Mating Force: Refer to product spec.
- Unmating Force: Refer to product spec.

### ENVIRONMENTAL

- Operating Temperature Range: -25°C to +85°C

### APPROVALS AND CERTIFICATIONS

- UL Approval: Pending

### SPECIFICATIONS

- Product Specification: GS-12-1654
- Packaging Specification: Refer to package drawing

### PACKAGING

- PCB Header: Tape/Reel
- Receptacle Housing: Bag
- Crimping Terminal: Reel

### TARGET MARKETS/APPLICATIONS



Cooking Machine  
Office Equipment  
Test & Measurement  
Point-of-sale Terminal  
Portable Terminal



Smart Home Device  
Vacuum Cleaner Robot

## PART NUMBERS

Description	Part Numbers
FitMate® 1.00mm Vertical Header, SMT, Single Row	10157376*
FitMate® 1.00mm Right Angle Header, SMT, Single Row	10157375*
FitMate® 1.00mm Receptacle Housing, Single Row	10157377*
FitMate® 1.00mm Crimping Terminal, Single Row	10157378*

\*denotes base part number. Find part number details using the search box on [www.amphenol-cs.com](http://www.amphenol-cs.com)

# FitMate® 1.00mm Single Row with Active Latch

## MODULAR AND FINE PITCH WIRE-TO-BOARD SOLUTION

Designed for the finest pitch wire-to-board applications, Amphenol's FitMate® 1.00mm is the ideal solution for devices that require compact and low-profile connectors.

With wire gauge range from 32AWG-28AWG, these connectors are available in single-row vertical SMT and right-angle SMT configurations. These connectors come with an active latch to provide enhanced contact reliability.

- Saves space with a 1.00mm pitch
- Current rating up to 1A
- Accommodates wire range from 32AWG-28AWG



### FEATURES

- 1.00mm pitch wire-to-board solution
- Low-profile design
- UL94V-0 flammability rated PA4T material
- RoHS compliant and lead-free
- Halogen-free resin material

### BENEFITS

- Saves space with reduced PCB footprint
- Saves PCB space
- High flammability rating
- Meets health and safety requirements
- Meets environmental requirements

## TECHNICAL INFORMATION

### MATERIAL

- Header:
  - Housing: PA4T, Natural/Black UL94V-0
  - Connector: Copper Alloy with Tin/ Gold Flash / 15µin Au / µin Au Plating
- Receptacle: PA66, Natural/Black UL94V-0
- Crimping Terminal: Phosphor Bronze

### ELECTRICAL PERFORMANCE

- Insulation Resistance: 100MΩ min.
- Voltage Rating: 100VAC (RMS)/DC
- Contact Resistance: 20mΩ max. (initial)
- Current Rating: 1A

### MECHANICAL PERFORMANCE

- Durability: 30 cycles
- Mating Force: Refer to product spec.
- Unmating Force: Refer to product spec.

### ENVIRONMENTAL

- Operating Temperature Range: -40°C to +105°C

### APPROVALS AND CERTIFICATIONS

- UL Approval: Pending

### SPECIFICATIONS

- Product Specification: GS-12-1828
- Packaging Specification: Refer to package drawing

### PACKAGING

- PCB Header: Tape/Reel
- Receptacle Housing: Bag
- Crimping Terminal: Reel

### TARGET MARKETS/APPLICATIONS



Cooking Machine  
Office Equipment  
Test & Measurement  
Point-of-sale Terminal  
Portable Terminal



Smart Home Device  
Vacuum Cleaner Robot

## PART NUMBERS

Description	Part Numbers
FitMate® 1.00mm Vertical Header, SMT, Single Row, with Active Latch	10164365*
FitMate® 1.00mm Right Angle Header, SMT, Single Row, with Active Latch	10164366*
FitMate® 1.00mm Receptacle Housing, Single Row, with Active Latch	10164367*
FitMate® 1.00mm Crimping Terminal, Single Row, with Active Latch	10157098*

\*denotes base part number. Find part number details using the search box on [www.amphenol-cs.com](http://www.amphenol-cs.com)