

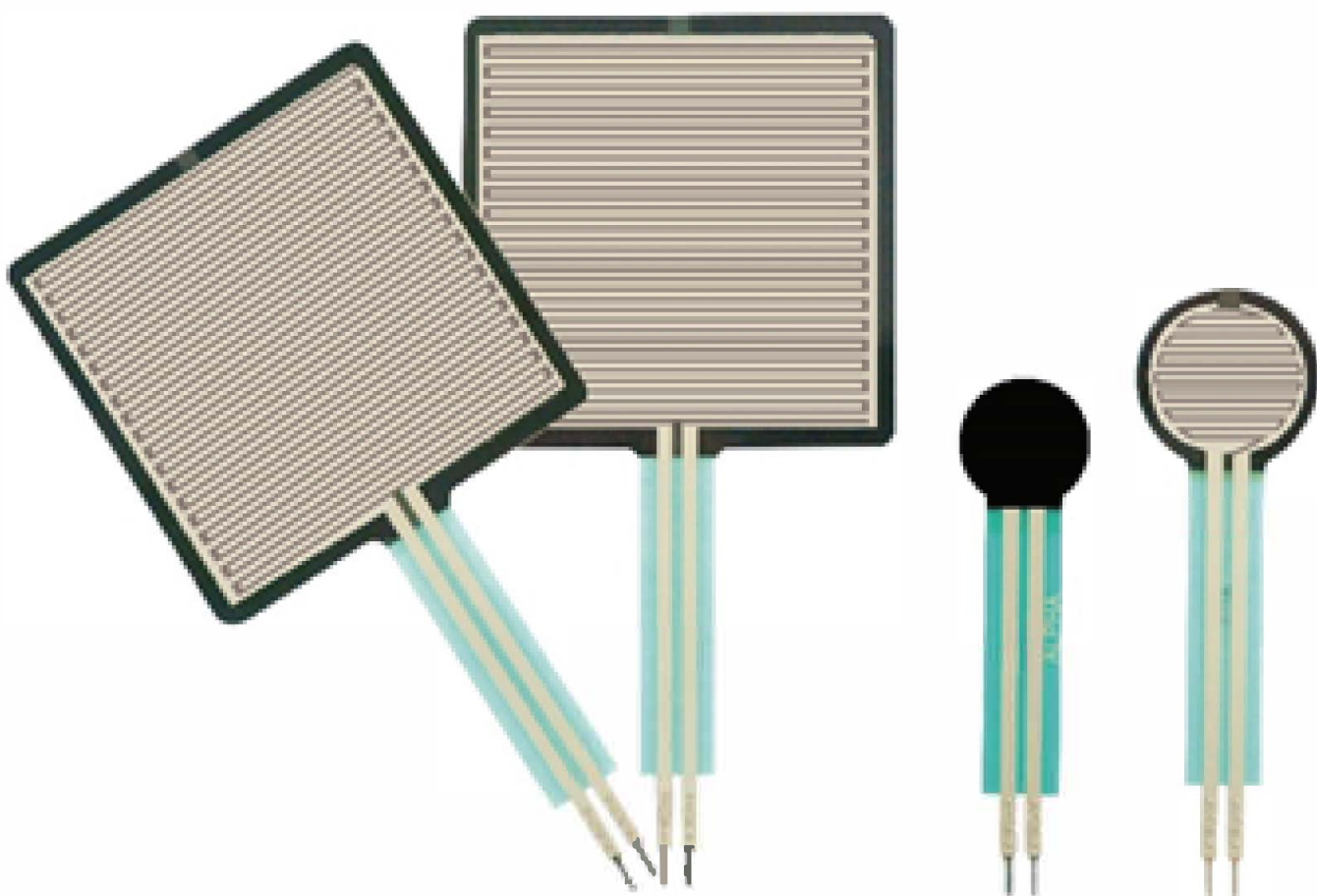
# Membrane Force Sensor

  
ALPHA

Thin and flexible, it can detect the change of applied force and be used in pressure measurement in a variety of applications and wearable technology.

Features

- Ultra-thin
- Flexible and sealed properties
- Customization available

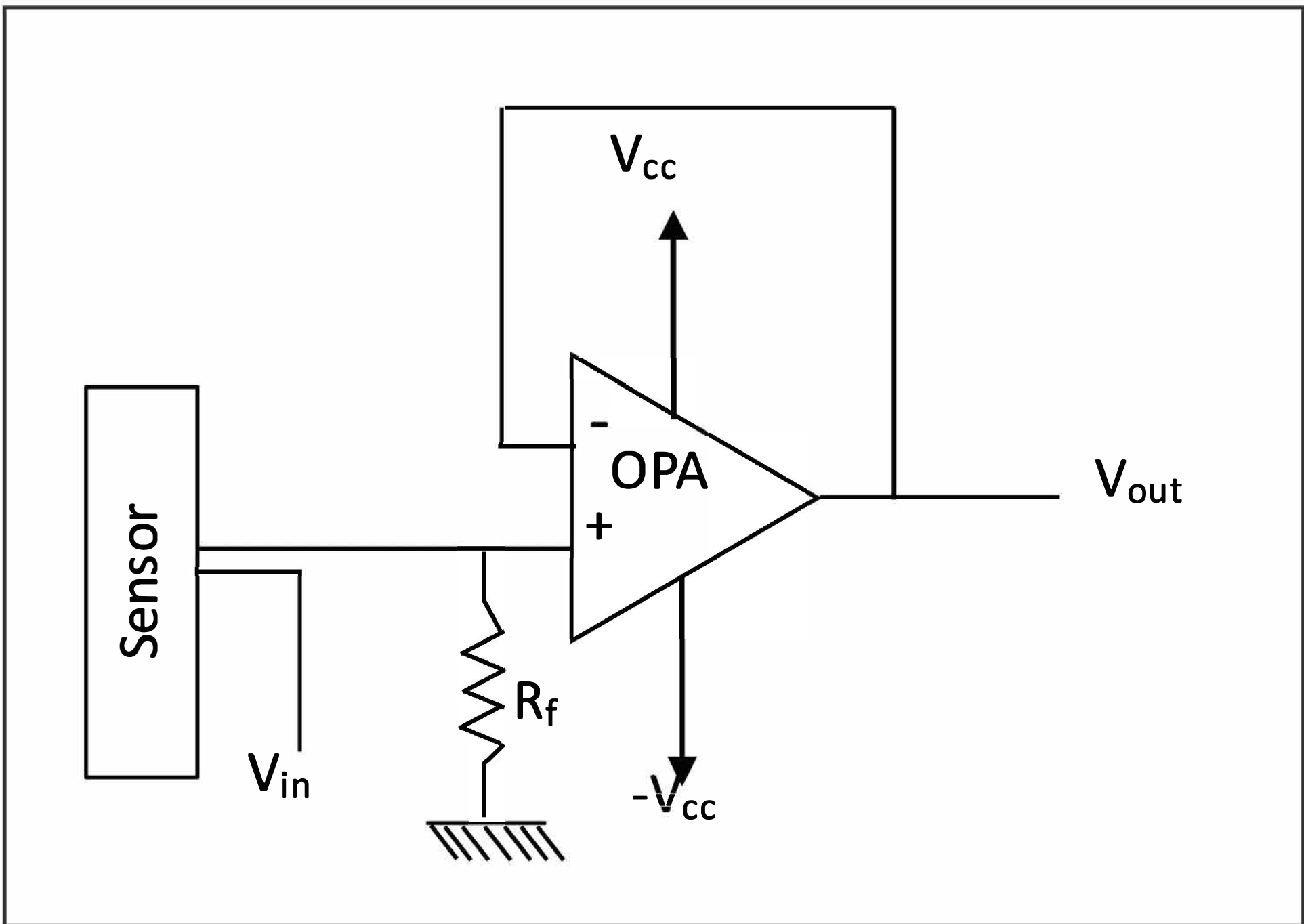


Specification

MODEL	MF01A-N-221-A01
FORCE SENSITIVITY RANGE	30g~1000g (0.3N~9.8N)
ACTIVE AREA	φ14.7mm
FORCE REPEATABILITY (SINGLE PART)	±2%
FORCE REPEATABILITY (PART TO PART)	±10%
STAND-OFF RESISTANCE (UNLOADED)	>20MΩ
RESPONSE TIME	<1ms
LIFE CYCLE (WITHOUT FAILURE)	> 5 Millions

Specification based on 1kg actuator measurement, one standard deviation / mean.

Sample Circuit



Force – Voltage curve

