

DAISY-1X1-WW-D

~80° wide beam. Variant with diffused lens.

SPECIFICATION:

Dimensions	40.0 x 40.0
Height	20.4 mm
ROHS compliant	yes ⓘ

MATERIALS:



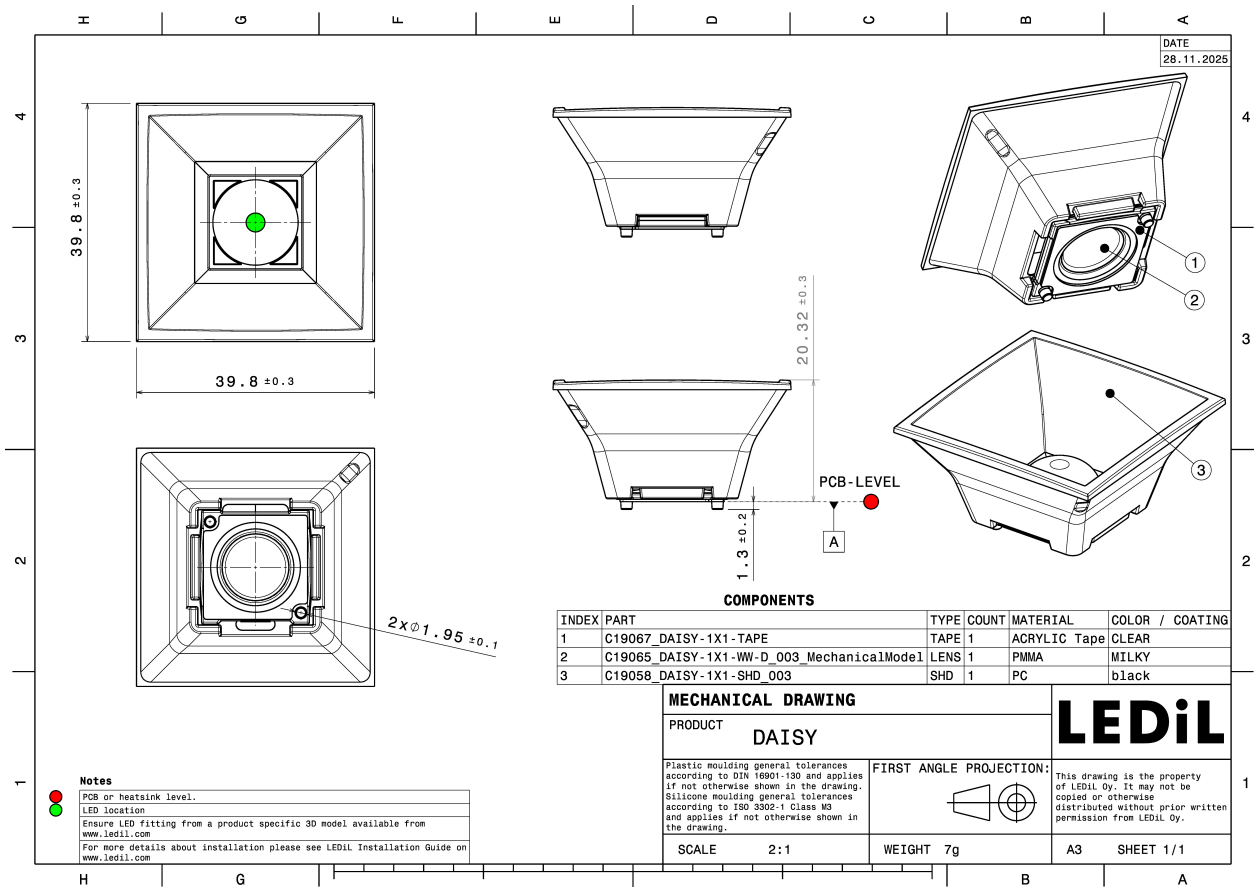
Component	Type	Material	Colour	Finish	Length (mm)
DAISY-1X1-WW-D	Single lens	PMMA	milky		
DAISY-1X1-TAPE	Tape	Acryl tape			
DAISY-1X1-SHD	Shade	PC	black	gloss	
DAISY-1X1-SHD-WHT	Shade	PC	white	gloss	
DAISY-1X1-SHD-MATT	Shade	PC-ABS	black	matt	
DAISY-1X1-SHD-MET	Shade	PC	metal	gloss	
DAISY-1X1-SHD-MET-MATT	Shade	PC-ABS	metal	matt	
DAISY-1X1-SHD-WHT-MATT	Shade	PC	white	matt	

ORDERING INFORMATION:

Quantities for one set:

Shade	1
Assembly	1

Component		Qty in box	MOQ	MPQ	Box weight (kg)
C19059_DAISY-1X1-SHD-WHT » Box size: 400 x 400 x 275 mm	Shade	672	112	56	5.5
C19451_DAISY-1X1-SHD-WHT-MATT » Box size: 400 x 400 x 275 mm	Shade	672	112	56	5.7
C19060_DAISY-1X1-SHD-MATT » Box size: 400 x 400 x 275 mm	Shade	672	112	56	5.4
C19061_DAISY-1X1-SHD-MET » Box size: 400 x 400 x 275 mm	Shade	672	112	56	5.5
C19062_DAISY-1X1-SHD-MET-MATT » Box size: 400 x 400 x 275 mm	Shade	672	112	56	5.4
C19058_DAISY-1X1-SHD » Box size: 400 x 400 x 275 mm	Shade	672	112	56	5.5
CA19072_DAISY-1X1-WW-D » Box size: 400 x 300 x 300 mm	Assembly	2016	112	112	3.7

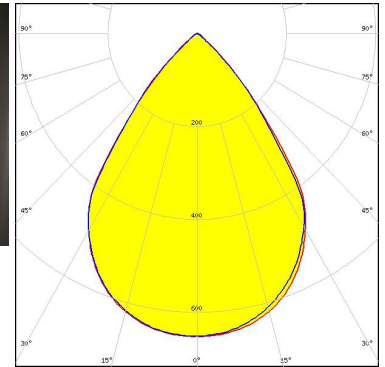
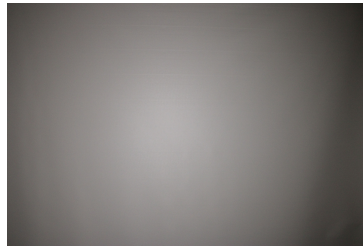


See also our general installation guide: www.ledil.com/installation_guide

OPTICAL RESULTS (MEASURED):

MST | Your solutions

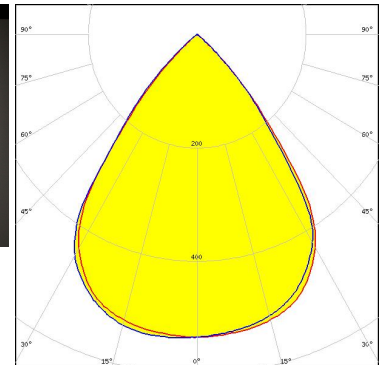
LED RecLED 35x34mm 400lm 36V SELV DAISY-1X1 G1
 FWHM / FWTM 74.0° / 95.0°
 Efficiency 89 %
 Peak intensity 0.7 cd/lm
 LEDs/each optic 4
 Light colour/type White
 Required components:
 C19062_DAISY-1X1-SHD-MET-MATT



Light distribution files

MST | Your solutions

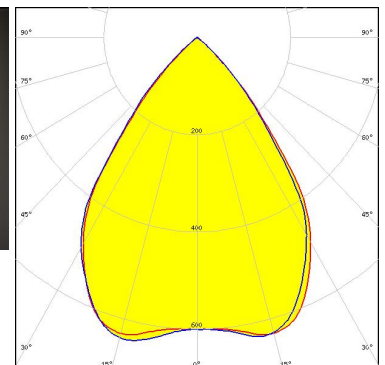
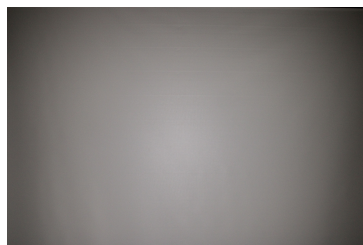
LED RecLED 35x34mm 400lm 36V SELV DAISY-1X1 G1
 FWHM / FWTM 75.0° / 95.0°
 Efficiency 77 %
 Peak intensity 0.5 cd/lm
 LEDs/each optic 4
 Light colour/type White
 Required components:
 C19058_DAISY-1X1-SHD



Light distribution files

MST | Your solutions

LED RecLED 35x34mm 400lm 36V SELV DAISY-1X1 G1
 FWHM / FWTM 74.0° / 95.0°
 Efficiency 92 %
 Peak intensity 0.7 cd/lm
 LEDs/each optic 4
 Light colour/type White
 Required components:
 C19061_DAISY-1X1-SHD-MET

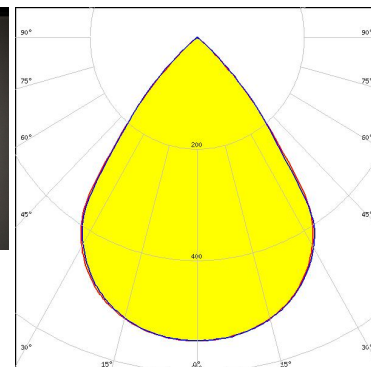
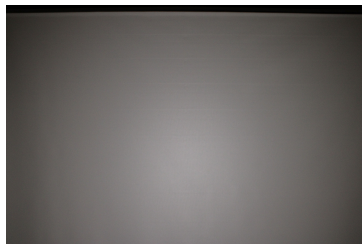


Light distribution files

OPTICAL RESULTS (MEASURED):

MST | Your solutions

LED RecLED 35x34mm 400lm 36V SELV DAISY-1X1 G1
 FWHM / FWTM 75.0° / 95.0°
 Efficiency 77 %
 Peak intensity 0.5 cd/lm
 LEDs/each optic 4
 Light colour/type White
 Required components:
 C19060_DAISY-1X1-SHD-MATT



Light distribution files

GENERAL INFORMATION:

NOTE: The typical beam angle will be changed by different color, chip size and chip position tolerance. The typical total beam angle is the full angle measured where the luminous intensity is half of the peak value.

MATERIALS:

As part of our continuous research and improvement processes, and to ensure the best possible quality and availability of our products, LEDiL reserves the right to change material grades without notice.

PRODUCT DATA USER AGREEMENT AND DISCLAIMER:

The measured data in the provided downloadable LEDiL Product Datasheets and Mechanical 2D-Drawings is rounded and provided as reference for planning. LEDiL Oy's optical specifications have been verified by conducting performance testing of the products in accordance with the company's quality system. The reported data are averaged results of multiple measurements with typical variation. LEDiL Oy reserves the right to without prior notification make changes and improvements to its products.

LEDiL Oy assumes neither warranty, nor guarantee nor any other liability of any kind for the contents and correctness of the provided data. The provided data has been generated with highest diligence but the provided data may in reality not represent the complete possible variation range of all intrinsic parameters. Therefore, in certain cases a deviation from the provided data could occur.

LEDiL Oy reserves the right to undertake technical changes of its products without further notification which could lead to changes in the provided data. LEDiL Oy assumes no liability of any kind for the possible deviation from any provided data or any other damage resulting from the usage of the provided data.

The user agrees to this disclaimer and user agreement with the download or usage of the provided files.

LEDiL Oy

Joensuunkatu 7
FI-24100 SALO
Finland

LEDiL Inc.

228 West Page Street
Suite D
Sycamore IL 60178
USA

Ledil Optics Technology (Shenzhen) Co., Ltd.

405 , Block B
Casic Motor Building
Shenzhen 518057
P.R.CHINA

Local sales and technical support

[www.ledil.com/
where_to_buy](http://www.ledil.com/where_to_buy)

Shipping locations

Poznan, Poland
Hong Kong, China

Distribution Partners

[www.ledil.com/
where_to_buy](http://www.ledil.com/where_to_buy)