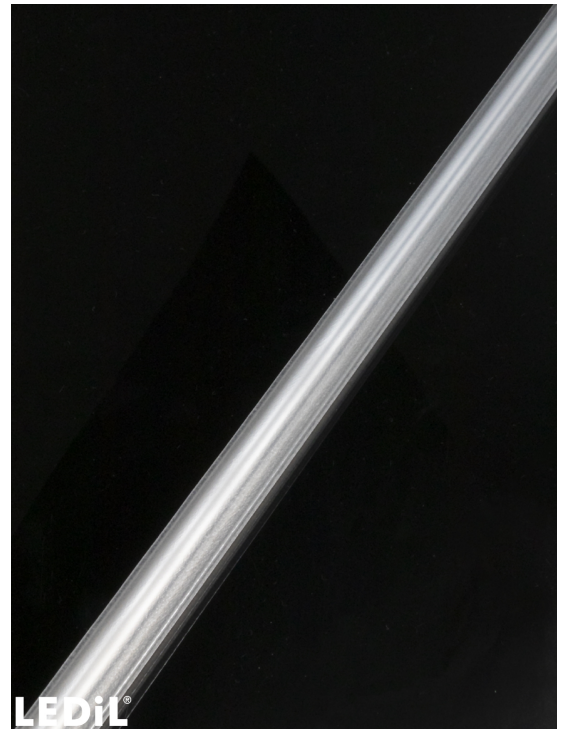


LINDA-10-ZT25

Asymmetric beam for wall-washing and shelf lighting

SPECIFICATION:

Dimensions	12.5 x 1140.0
Height	6.1 mm
ROHS compliant	yes ⓘ

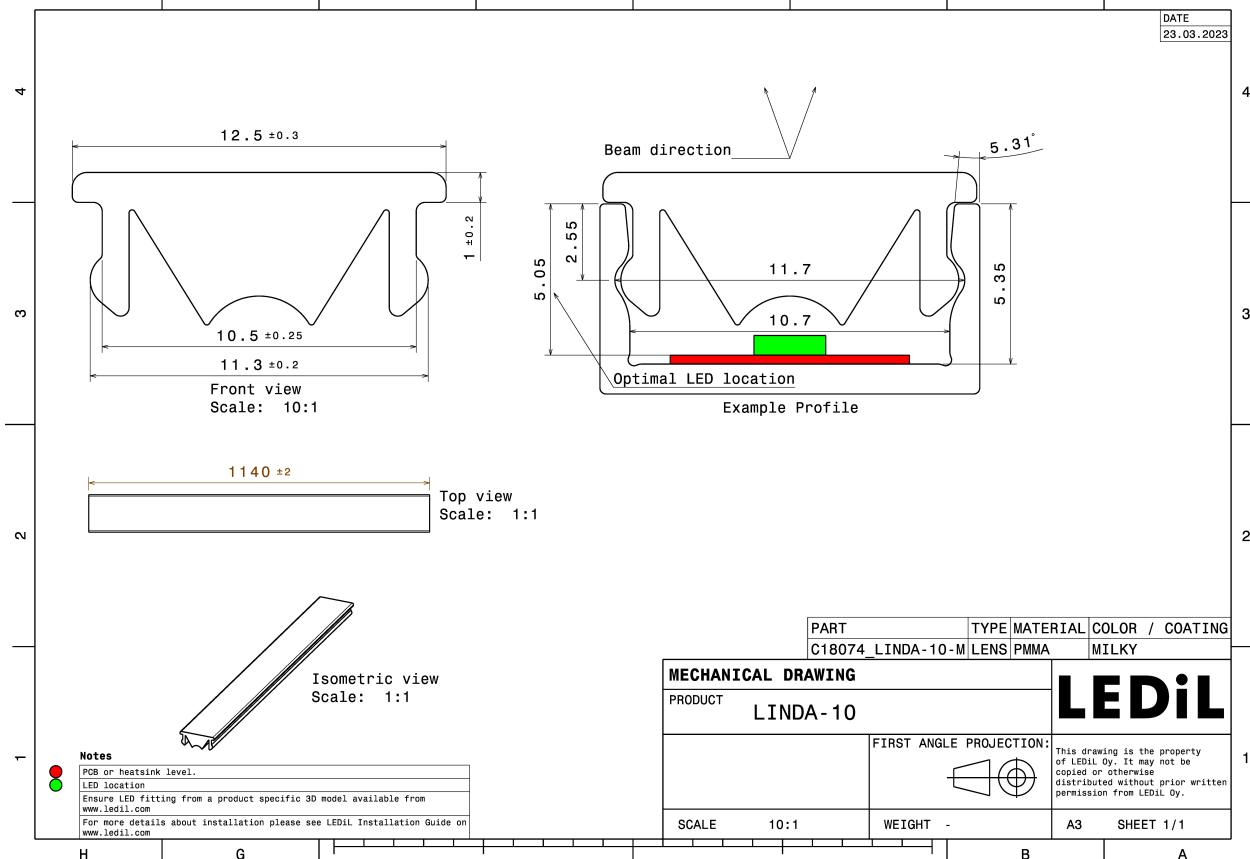
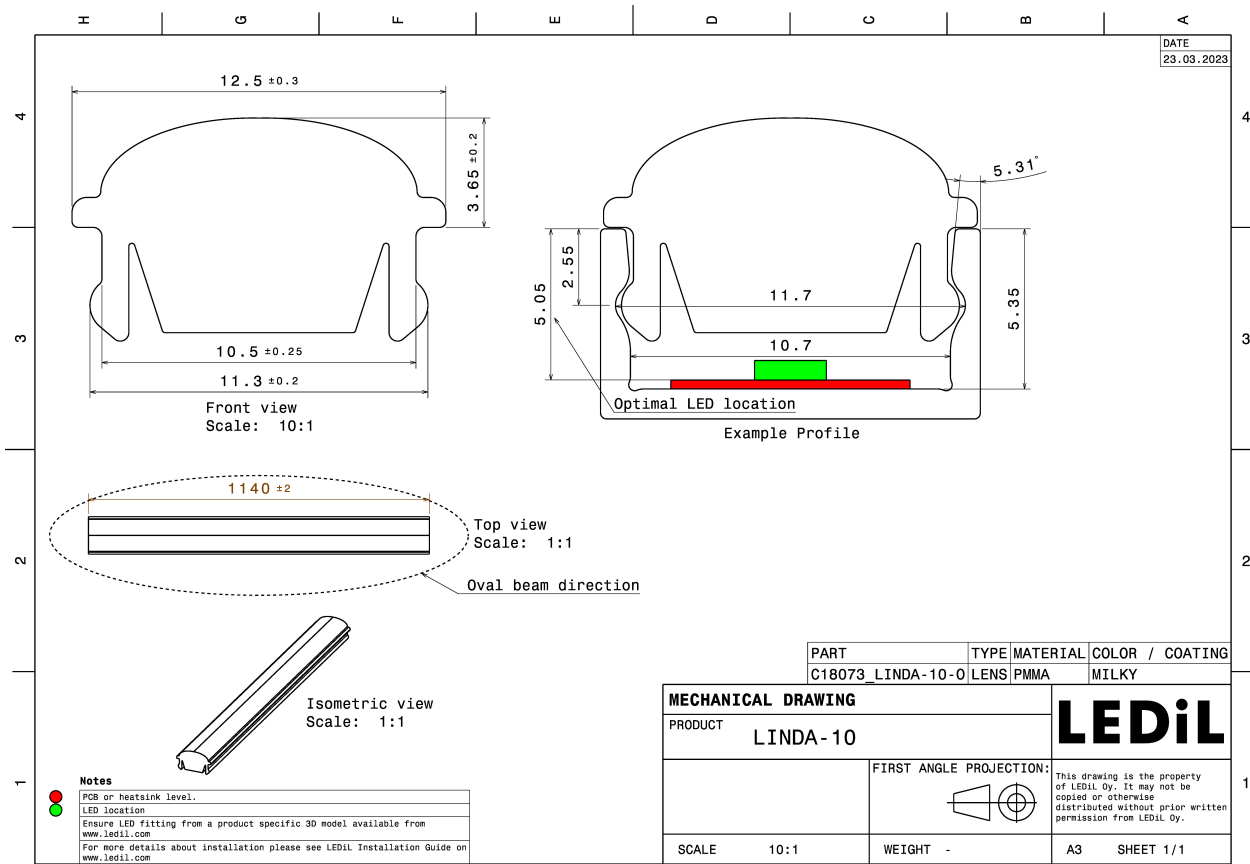


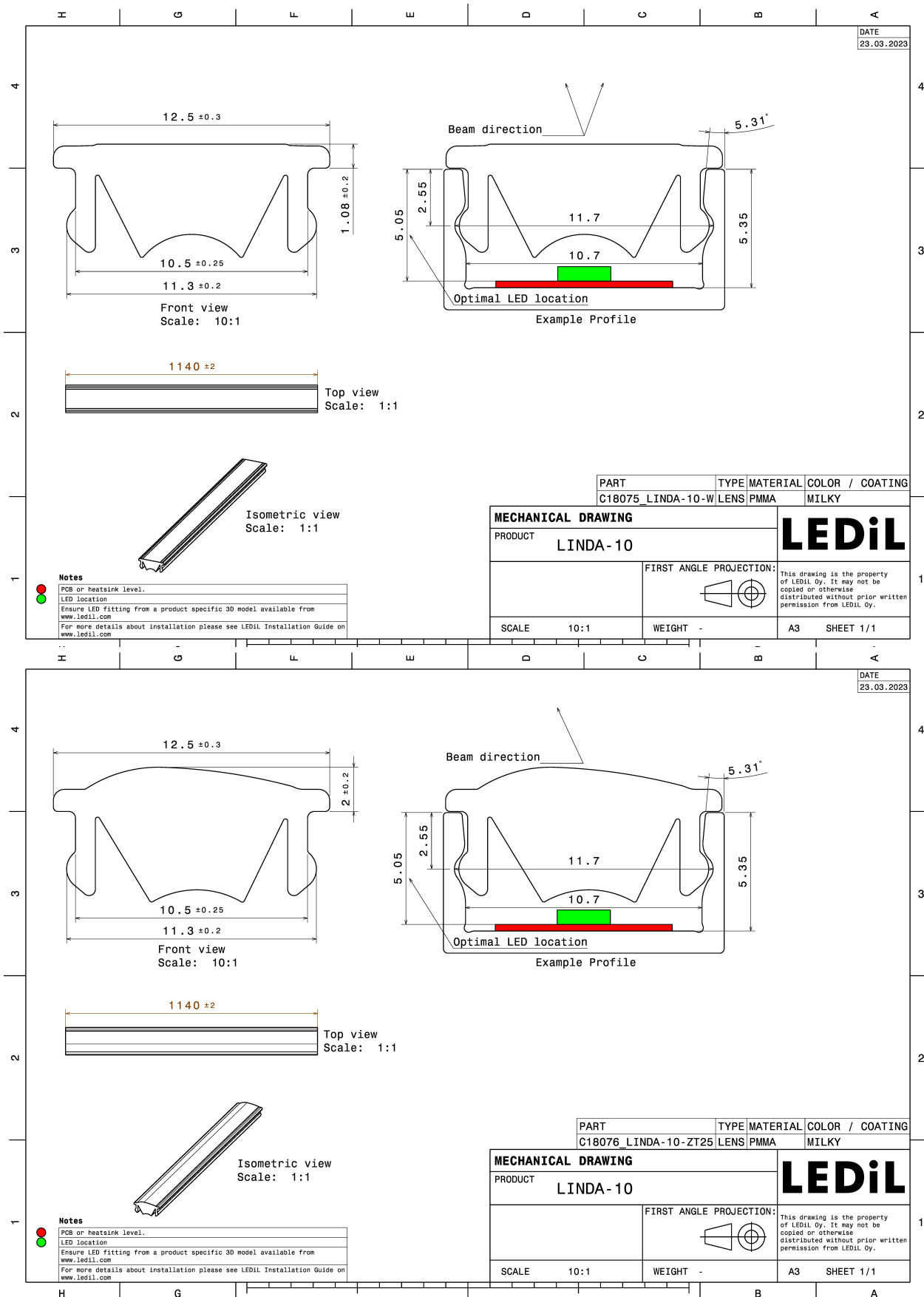
MATERIALS:

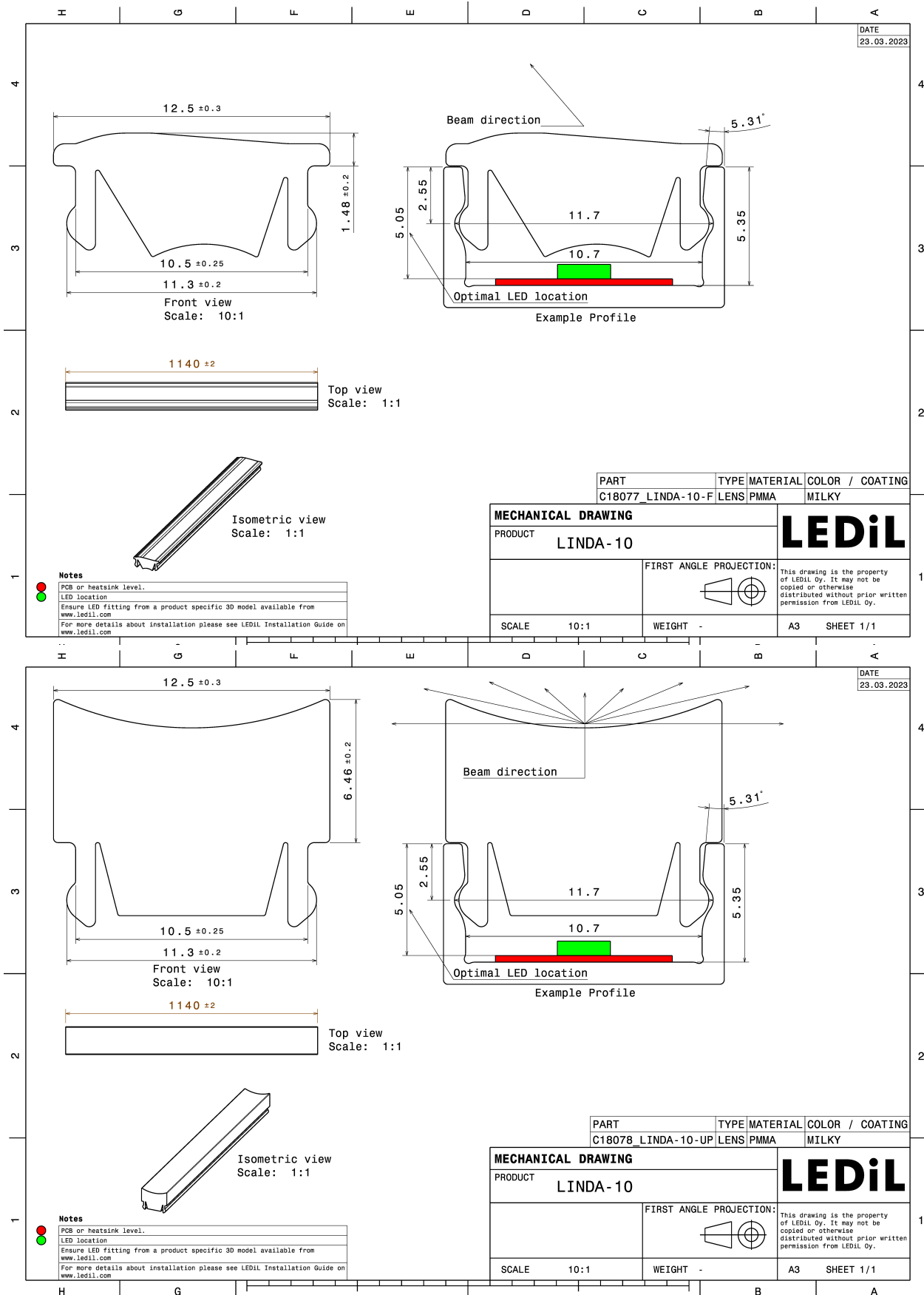
Component	Type	Material	Colour	Finish	Length (mm)
LINDA-10-ZT25	Linear lens	PMMA			

ORDERING INFORMATION:

Component	Qty in box	MOQ	MPQ	Box weight (kg)
C18076_LINDA-10-ZT25 » Box size: 1185 x 150 x 80 mm	130	130	130	9.0







See also our general installation guide: www.ledil.com/installation_guide

OPTICAL RESULTS (MEASURED):

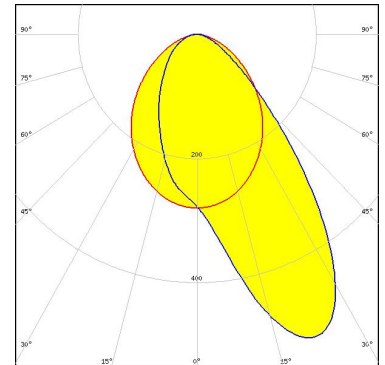


LED	LUXEON 3014
FWHM / FWTM	40.0 + 88.0° / 110.0 + 147.0°
Efficiency	84 %
Peak intensity	0.7 cd/lm
LEDs/each optic	1
Light colour/type	White
Required components:	

Light distribution files



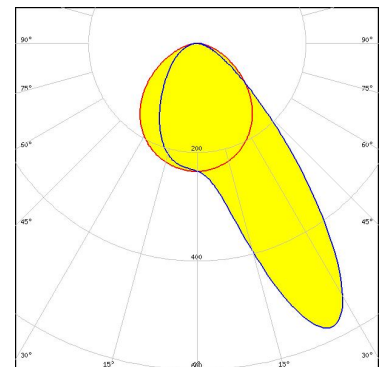
LED	LUXEON 3030 2D (Round LES)
FWHM / FWTM	93.0 + 44.0° / 150.0 + 115.0°
Efficiency	74 %
Peak intensity	0.5 cd/lm
LEDs/each optic	1
Light colour/type	White
Required components:	



Light distribution files



LED	MP-2016
FWHM / FWTM	101.0 + 31.0° / 155.0 + 111.0°
Efficiency	74 %
Peak intensity	0.6 cd/lm
LEDs/each optic	1
Light colour/type	White
Required components:	

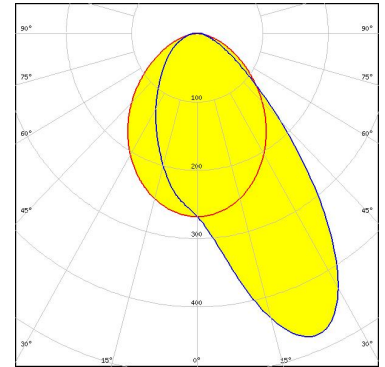


Light distribution files

OPTICAL RESULTS (MEASURED):



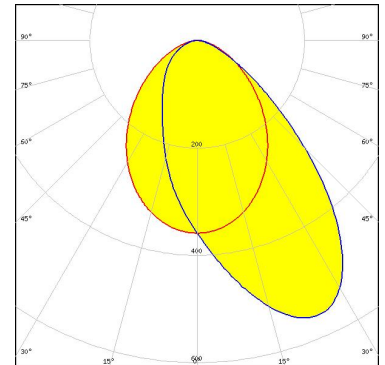
LED NF2x757G
 FWHM / FWTM 93.0 + 49.0° / 150.0 + 118.5°
 Efficiency 71 %
 Peak intensity 0.5 cd/lm
 LEDs/each optic 1
 Light colour/type White
 Required components:



Light distribution files



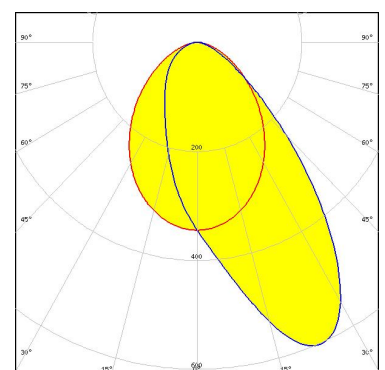
LED NFSW757H
 FWHM / FWTM 86.0 + 55.0° / 146.0 + 121.0°
 Efficiency 87 %
 Peak intensity 0.6 cd/lm
 LEDs/each optic 1
 Light colour/type White
 Required components:



Light distribution files



LED DURIS S5 (Single chip)
 FWHM / FWTM 89.0 + 47.0° / 147.0 + 116.0°
 Efficiency 86 %
 Peak intensity 0.6 cd/lm
 LEDs/each optic 1
 Light colour/type White
 Required components:

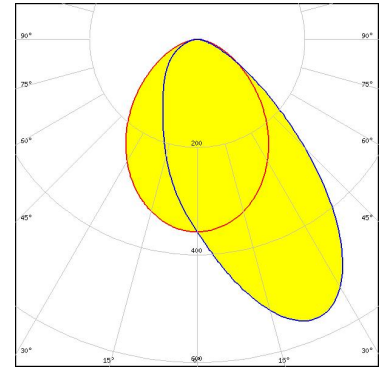


Light distribution files

OPTICAL RESULTS (MEASURED):

SAMSUNG

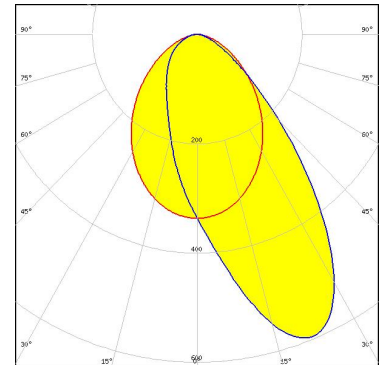
LED	LM301B
FWHM / FWTM	87.0 + 54.0° / 146.0 + 120.0°
Efficiency	87 %
Peak intensity	0.6 cd/lm
LEDs/each optic	1
Light colour/type	White
Required components:	



Light distribution files



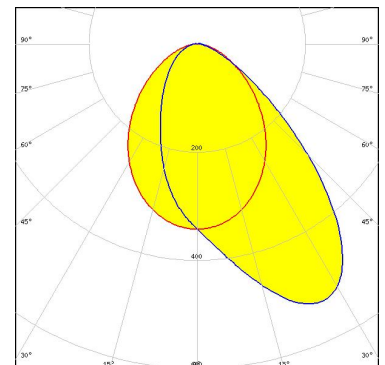
LED	SEOUL 3030
FWHM / FWTM	88.0 + 45.0° / 147.0 + 115.0°
Efficiency	83 %
Peak intensity	0.6 cd/lm
LEDs/each optic	1
Light colour/type	White
Required components:	



Light distribution files

TRIDONIC

LED	LLE FLEX 8mm EXC3
FWHM / FWTM	Asymmetric
Efficiency	84 %
Peak intensity	0.5 cd/lm
LEDs/each optic	1
Light colour/type	White
Required components:	

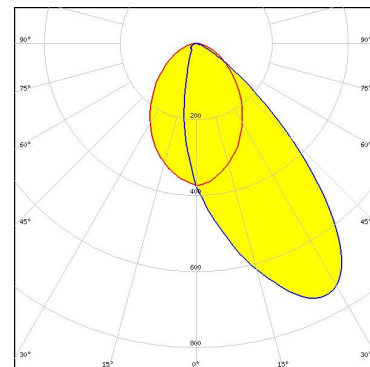


Light distribution files

OPTICAL RESULTS (SIMULATED):



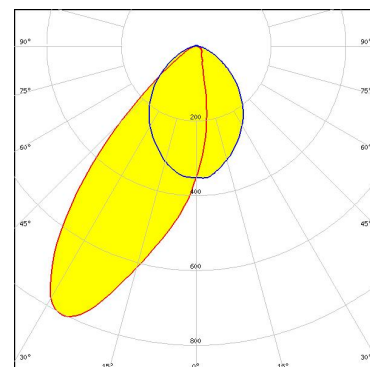
LED Bridgelux SMD 2835
 FWHM / FWTM Asymmetric
 Efficiency 86 %
 Peak intensity 0.7 cd/lm
 LEDs/each optic 1
 Light colour/type White
 Required components:



Light distribution files

SAMSUNG

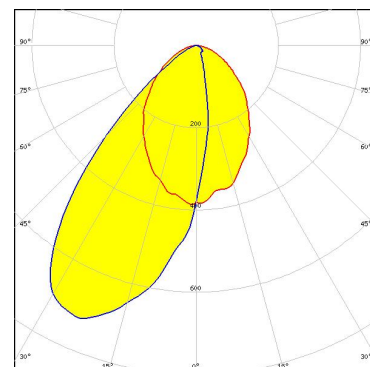
LED LM28xB Series
 FWHM / FWTM Asymmetric
 Efficiency 85 %
 Peak intensity 0.8 cd/lm
 LEDs/each optic 1
 Light colour/type White
 Required components:



Light distribution files



LED SEOUL 3030
 FWHM / FWTM Asymmetric
 Efficiency 85 %
 Peak intensity 0.7 cd/lm
 LEDs/each optic 1
 Light colour/type White
 Required components:



Light distribution files

GENERAL INFORMATION:

NOTE: The typical beam angle will be changed by different color, chip size and chip position tolerance. The typical total beam angle is the full angle measured where the luminous intensity is half of the peak value.

MATERIALS:

As part of our continuous research and improvement processes, and to ensure the best possible quality and availability of our products, LEDiL reserves the right to change material grades without notice.

PRODUCT DATA USER AGREEMENT AND DISCLAIMER:

The measured data in the provided downloadable LEDiL Product Datasheets and Mechanical 2D-Drawings is rounded and provided as reference for planning. LEDiL Oy's optical specifications have been verified by conducting performance testing of the products in accordance with the company's quality system. The reported data are averaged results of multiple measurements with typical variation. LEDiL Oy reserves the right to without prior notification make changes and improvements to its products.

LEDiL Oy assumes neither warranty, nor guarantee nor any other liability of any kind for the contents and correctness of the provided data. The provided data has been generated with highest diligence but the provided data may in reality not represent the complete possible variation range of all intrinsic parameters. Therefore, in certain cases a deviation from the provided data could occur.

LEDiL Oy reserves the right to undertake technical changes of its products without further notification which could lead to changes in the provided data. LEDiL Oy assumes no liability of any kind for the possible deviation from any provided data or any other damage resulting from the usage of the provided data.

The user agrees to this disclaimer and user agreement with the download or usage of the provided files.

LEDiL Oy

Joensuunkatu 7
FI-24100 SALO
Finland

LEDiL Inc.

228 West Page Street
Suite D
Sycamore IL 60178
USA

Ledil Optics Technology (Shenzhen) Co., Ltd.

405 , Block B
Casic Motor Building
Shenzhen 518057
P.R.CHINA

Local sales and technical support

[www.ledil.com/
where_to_buy](http://www.ledil.com/where_to_buy)

Shipping locations

Poznan, Poland
Hong Kong, China

Distribution Partners

[www.ledil.com/
where_to_buy](http://www.ledil.com/where_to_buy)