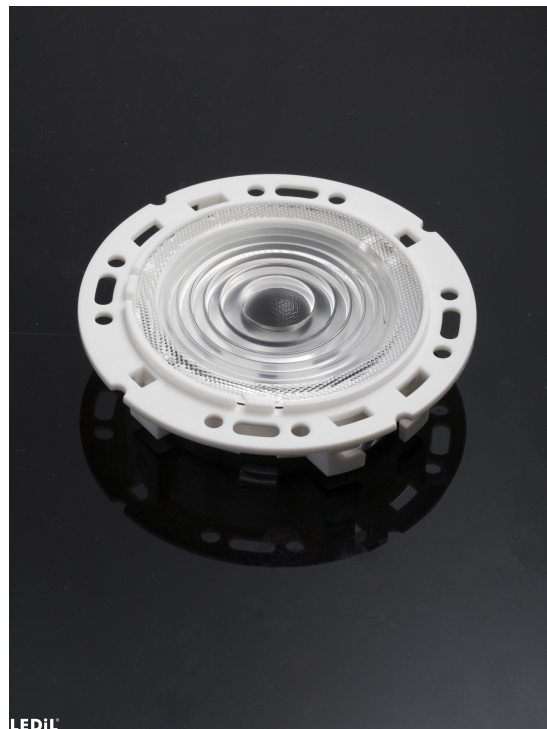


### RONDA-S

~25° spot beam with holder A compatible with 3rd party connectors from TE, Bender+Wirth and IDEAL

#### SPECIFICATION:

Dimensions	Ø 69.9
Height	17.2 mm
Fastening	screw
ROHS compliant	yes ⓘ



#### MATERIALS:

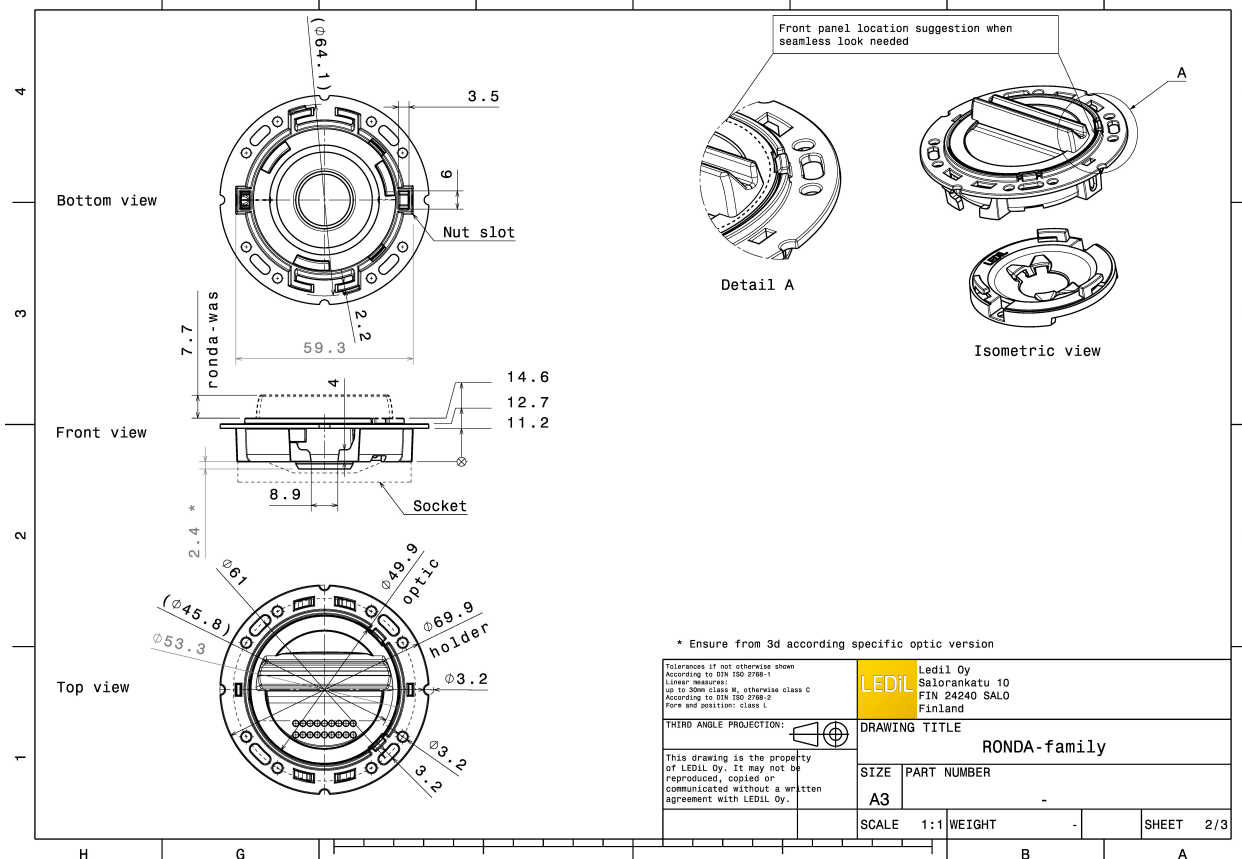
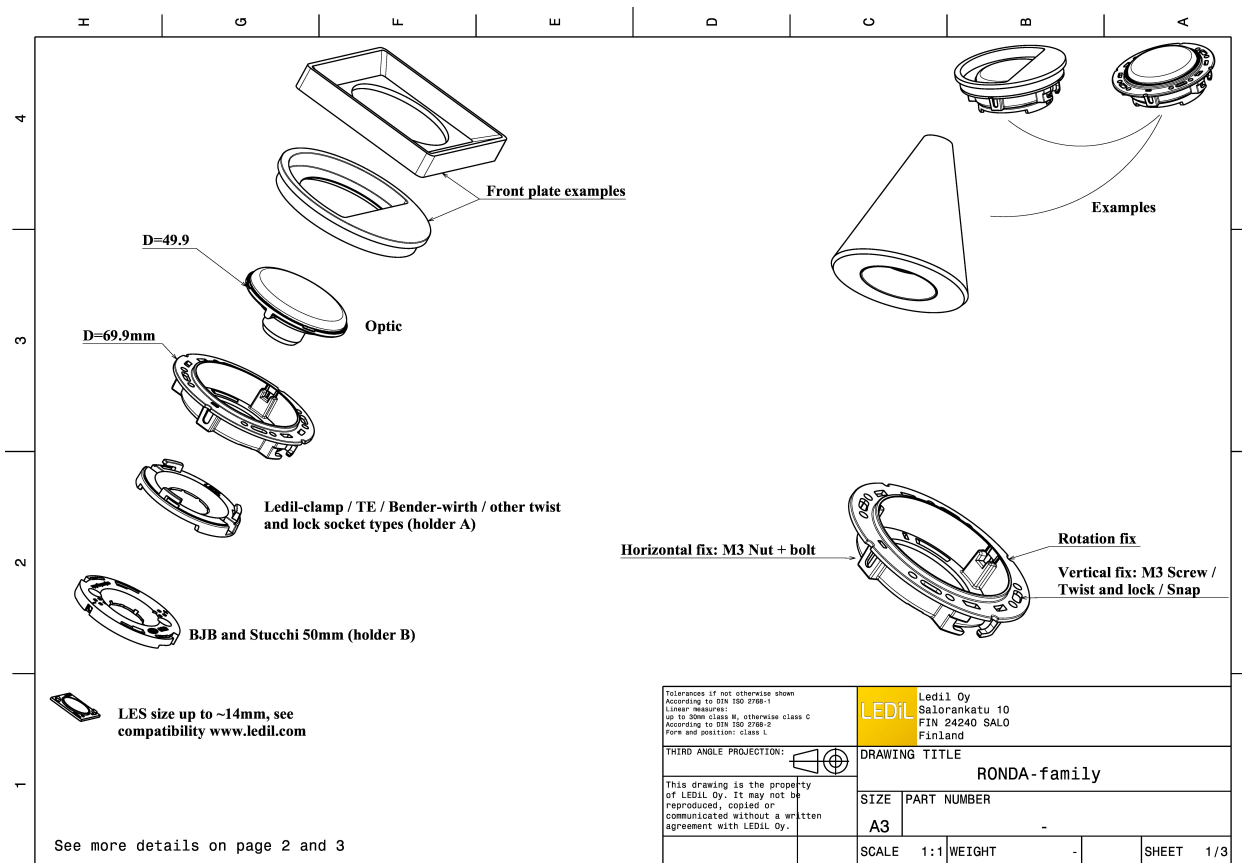
Component	Type	Material	Colour	Finish	Length (mm)
RONDA-S	Single lens	PMMA	clear		
RONDA-HLD-A	Holder	PC	white		

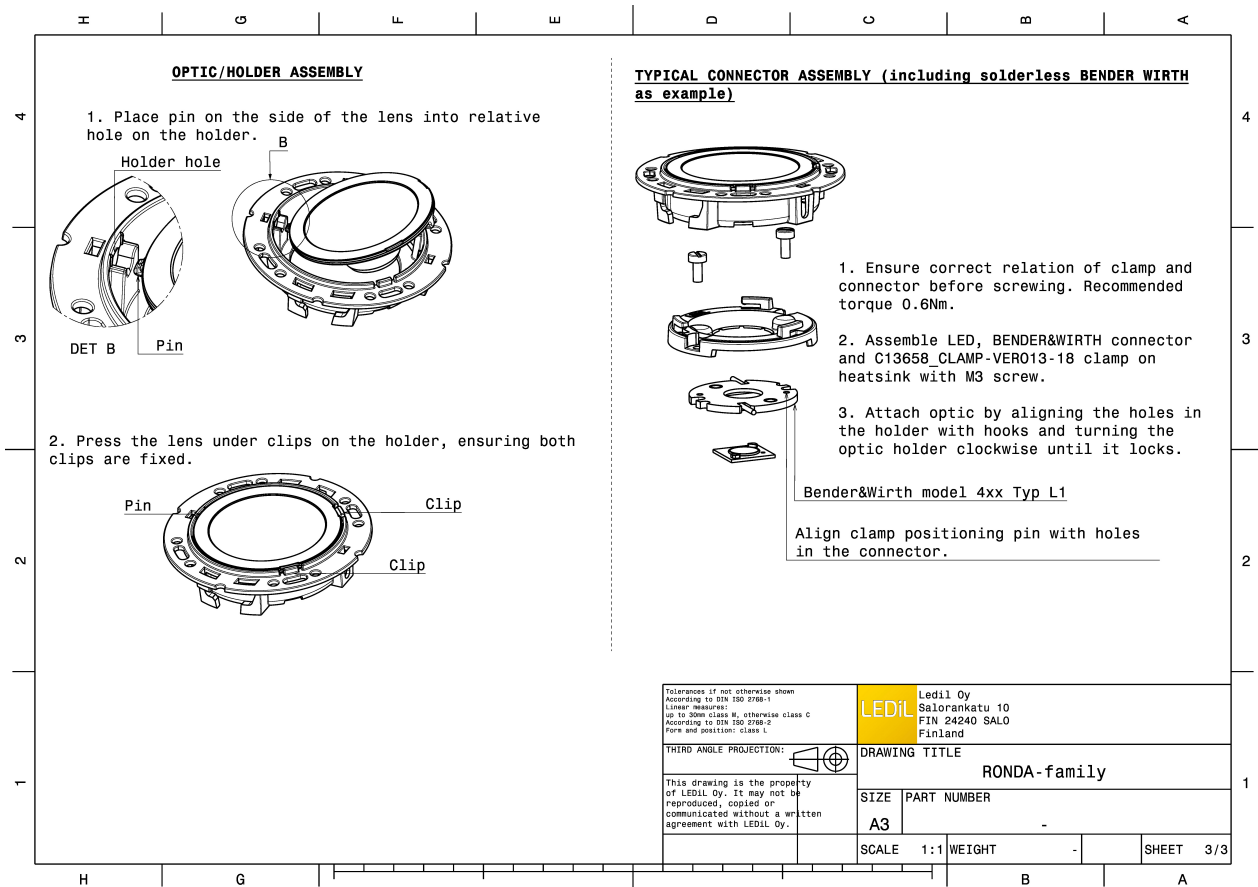
#### ORDERING INFORMATION:

##### Quantities for one set:

Single lens	1
Holder	1

Component		Qty in box	MOQ	MPQ	Box weight (kg)
F15667_RONDA-S » Box size: 480 x 280 x 300 mm	Single lens	420	120	30	6.3
F15155_RONDA-HLD-A » Box size: 480 x 280 x 300 mm	Holder	420	120	30	4.4





See also our general installation guide: [www.ledil.com/installation\\_guide](http://www.ledil.com/installation_guide)



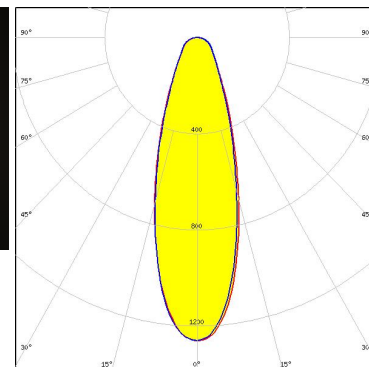
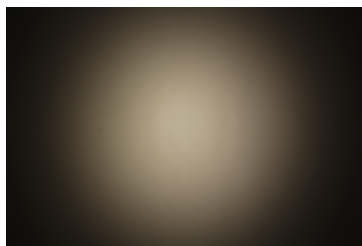
### OPTICAL RESULTS (MEASURED):



LED V13 Gen7  
FWHM / FWTM 32.0° / 79.0°  
Efficiency 80 %  
Peak intensity 1.3 cd/lm  
LEDs/each optic 1  
Light colour/type White

Required components:

TE Connectivity: 2213254-2 + OPTIC CLIP Z50 TYPE1 2213194-1



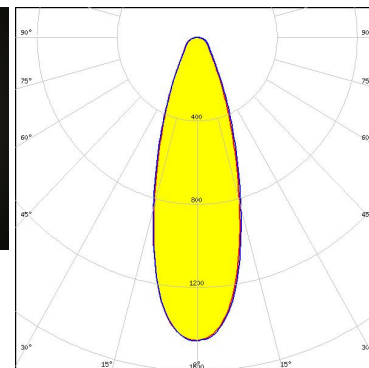
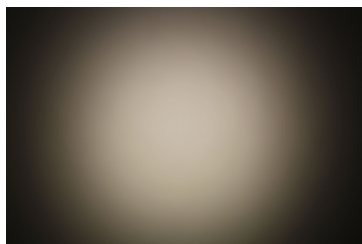
Light distribution files



LED Vero SE 13  
FWHM / FWTM 33.0° / 73.0°  
Efficiency 86 %  
Peak intensity 1.5 cd/lm  
LEDs/each optic 1  
Light colour/type White

Required components:

C16402\_CLAMP-VEROSE-13-18



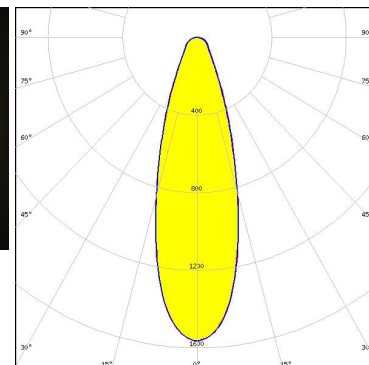
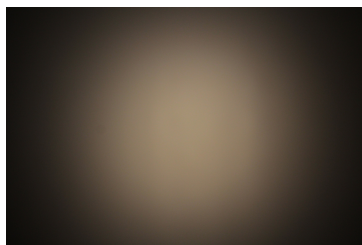
Light distribution files



LED VERO13  
FWHM / FWTM 32.0° / 70.0°  
Efficiency 87 %  
Peak intensity 1.6 cd/lm  
LEDs/each optic 1  
Light colour/type White

Required components:

C13658\_CLAMP-VERO13-18

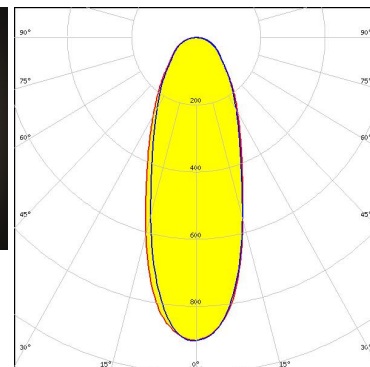
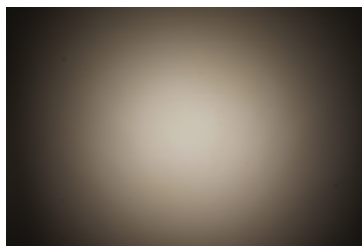


Light distribution files

### OPTICAL RESULTS (MEASURED):

bridgelux

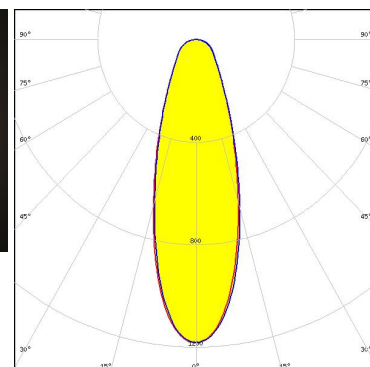
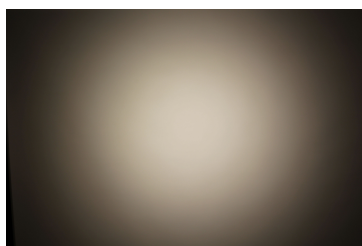
LED VERO18  
FWHM / FWTM 39.0° / 109.0°  
Efficiency 81 %  
Peak intensity 0.9 cd/lm  
LEDs/each optic 1  
Light colour/type White  
Required components:  
C13658\_CLAMP-VERO13-18



Light distribution files

### CITIZEN

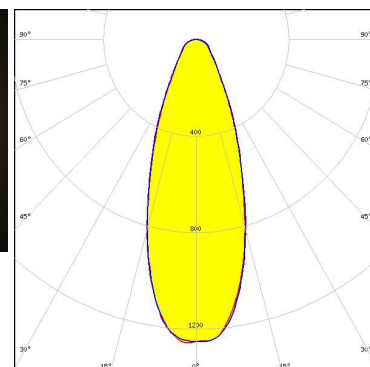
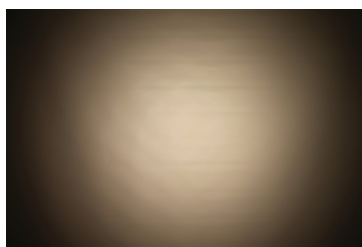
LED CLU03x  
FWHM / FWTM 33.0° / 87.0°  
Efficiency 83 %  
Peak intensity 1.2 cd/lm  
LEDs/each optic 1  
Light colour/type White  
Required components:  
C16791\_CLAMP-Z45-A  
TE Connectivity: 2325807-3



Light distribution files

CREE  
LEDs

LED CMA1840  
FWHM / FWTM 38.0°  
Efficiency 88 %  
Peak intensity 1.3 cd/lm  
LEDs/each optic 1  
Light colour/type White  
Required components:  
C14123\_CLAMP-CXA15-18

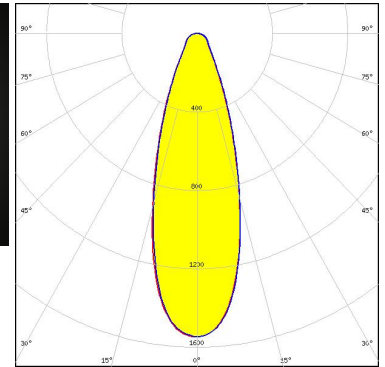
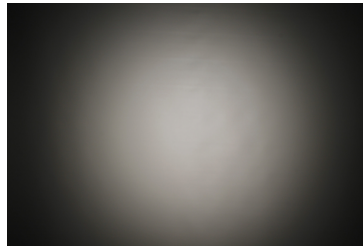


Light distribution files

### OPTICAL RESULTS (MEASURED):



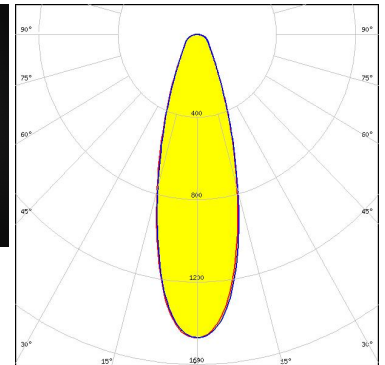
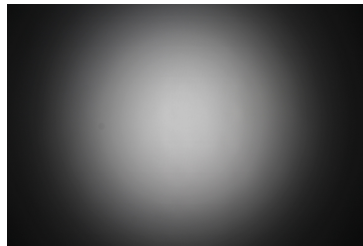
LED CXA/B 1816 & CXA/B 1820 & CXA 1850  
FWHM / FWTM 33.0° / 69.0°  
Efficiency 88 %  
Peak intensity 1.5 cd/lm  
LEDs/each optic 1  
Light colour/type White  
Required components:  
C14123\_CLAMP-CXA15-18



Light distribution files



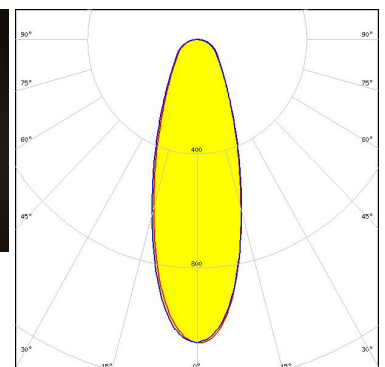
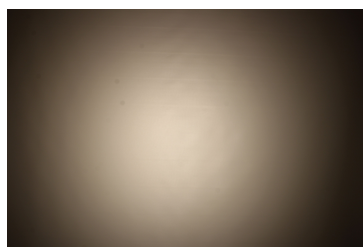
LED CXA/B 1816 & CXA/B 1820 & CXA 1850  
FWHM / FWTM 31.0° / 71.0°  
Efficiency 83 %  
Peak intensity 1.5 cd/lm  
LEDs/each optic 1  
Light colour/type White  
Required components:  
TE Connectivity: 2213401-2 + OPTIC CLIP Z50 TYPE1 2213194-1



Light distribution files



LED PrevaLED Core G7 L15 H1  
FWHM / FWTM 35.0° / 96.0°  
Efficiency 82 %  
Peak intensity 1.1 cd/lm  
LEDs/each optic 1  
Light colour/type White  
Required components:  
C16685\_CLAMP-PRV-A



Light distribution files

### OPTICAL RESULTS (MEASURED):

#### PHILIPS

LED Fortimo SLM L13 CoB

FWHM / FWTM 34.0° / 73.0°

Efficiency 81 %

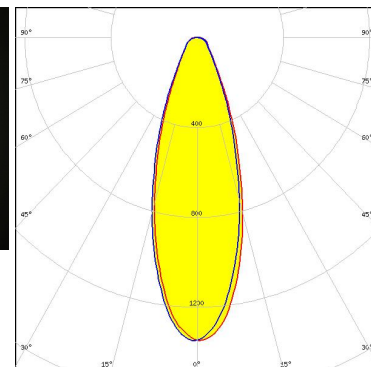
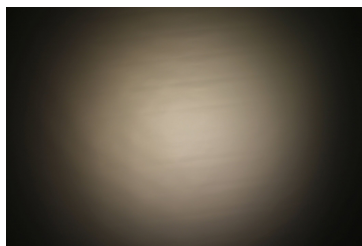
Peak intensity 1.4 cd/lm

LEDs/each optic 1

Light colour/type White

Required components:

TE Connectivity: 2213130-2 + OPTIC CLIP Z50 TYPE1 2213194-1



Light distribution files

#### PHILIPS

LED Fortimo SLM L15 + SLM holder

FWHM / FWTM 34.0° / 92.0°

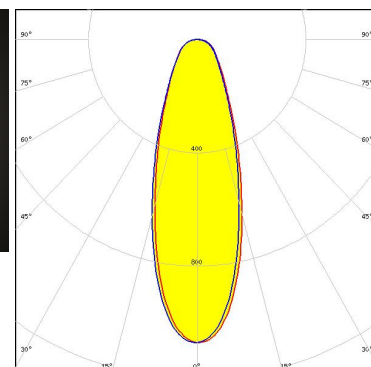
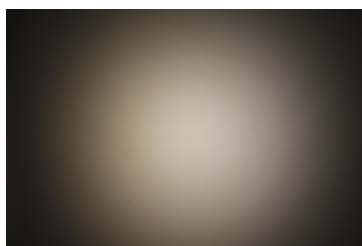
Efficiency 79 %

Peak intensity 1.1 cd/lm

LEDs/each optic 1

Light colour/type White

Required components:



Light distribution files



LED AC Zhaga COB

FWHM / FWTM 36.0° / 84.0°

Efficiency 83 %

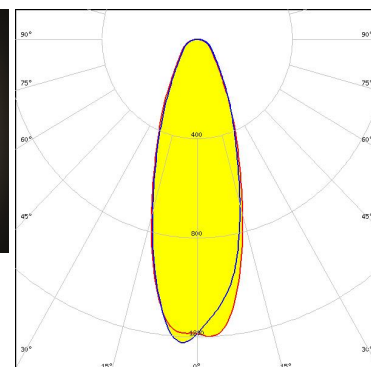
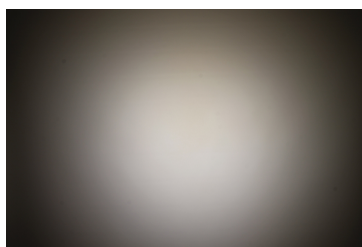
Peak intensity 1.2 cd/lm

LEDs/each optic 1

Light colour/type White

Required components:

Optosource: SEHSMJD-A



Light distribution files

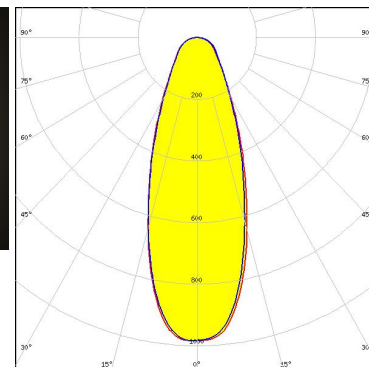
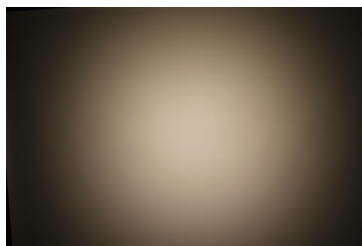
### OPTICAL RESULTS (MEASURED):



LED MJT COB LES 14.5  
 FWHM / FWTM 38.0° / 93.0°  
 Efficiency 78 %  
 Peak intensity 1 cd/lm  
 LEDs/each optic 1  
 Light colour/type White

Required components:

TE Connectivity: 2213254-2 + OPTIC CLIP Z50 TYPE1 2213194-1



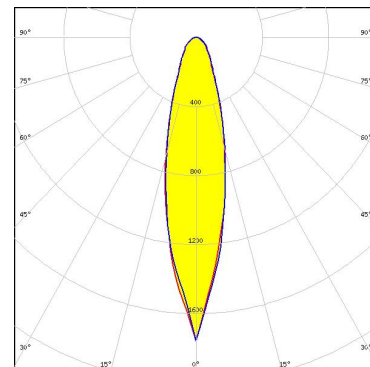
Light distribution files

### OPTICAL RESULTS (SIMULATED):



LED V13 Gen7  
FWHM / FWTM 24.0° / 64.0°  
Efficiency 73 %  
Peak intensity 1.8 cd/lm  
LEDs/each optic 1  
Light colour/type White  
Required components:

IDEAL: 50-2103CT + 50-2100AN

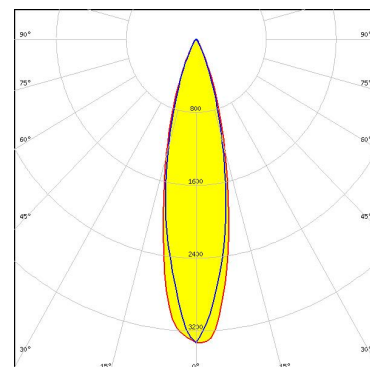


Light distribution files

### CITIZEN

LED CLU02x (LES10)  
FWHM / FWTM 25.0° / 49.0°  
Efficiency 86 %  
Peak intensity 3.4 cd/lm  
LEDs/each optic 1  
Light colour/type White  
Required components:

C13658\_CLAMP-VERO13-18

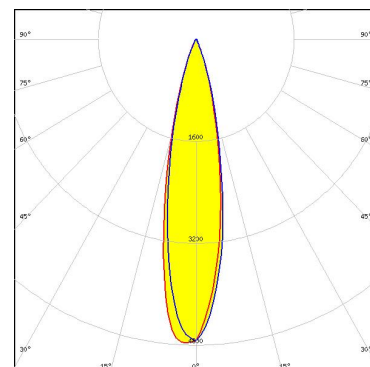


Light distribution files



LED CXA/B 15xx  
FWHM / FWTM 22.0° / 42.0°  
Efficiency 89 %  
Peak intensity 4.9 cd/lm  
LEDs/each optic 1  
Light colour/type White  
Required components:

C13658\_CLAMP-VERO13-18

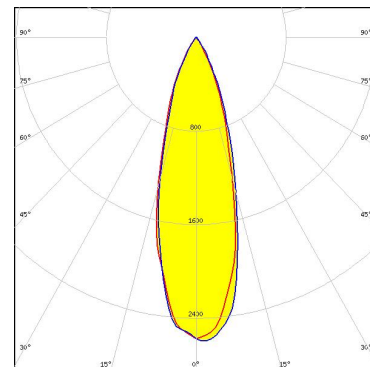


Light distribution files

### OPTICAL RESULTS (SIMULATED):



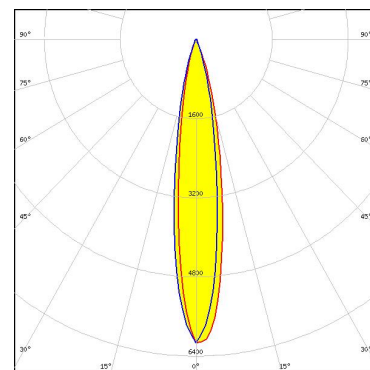
LED CXA/B 1816 & CXA/B 1820 & CXA 1850  
 FWHM / FWTM 29.0°  
 Efficiency 85 %  
 Peak intensity 2.6 cd/lm  
 LEDs/each optic 1  
 Light colour/type White  
 Required components:  
 C14123\_CLAMP-CXA15-18



Light distribution files



LED Duris S10  
 FWHM / FWTM 17.0° / 36.0°  
 Efficiency 87 %  
 Peak intensity 6.2 cd/lm  
 LEDs/each optic 1  
 Light colour/type White  
 Required components:  
 C13658\_CLAMP-VERO13-18



Light distribution files



### GENERAL INFORMATION:

NOTE: The typical beam angle will be changed by different color, chip size and chip position tolerance. The typical total beam angle is the full angle measured where the luminous intensity is half of the peak value.

Due to use of high power COB's with this product, special attention to proper thermal design is highly recommended. LEDiL has no liability for direct, indirect or consecutive damages arising from the LEDiL products being used outside of the recommended temperature range.

### MATERIALS:

As part of our continuous research and improvement processes, and to ensure the best possible quality and availability of our products, LEDiL reserves the right to change material grades without notice.

### PRODUCT DATA USER AGREEMENT AND DISCLAIMER:

The measured data in the provided downloadable LEDiL Product Datasheets and Mechanical 2D-Drawings is rounded and provided as reference for planning. LEDiL Oy's optical specifications have been verified by conducting performance testing of the products in accordance with the company's quality system. The reported data are averaged results of multiple measurements with typical variation. LEDiL Oy reserves the right to without prior notification make changes and improvements to its products.

LEDiL Oy assumes neither warranty, nor guarantee nor any other liability of any kind for the contents and correctness of the provided data. The provided data has been generated with highest diligence but the provided data may in reality not represent the complete possible variation range of all intrinsic parameters. Therefore, in certain cases a deviation from the provided data could occur.

LEDiL Oy reserves the right to undertake technical changes of its products without further notification which could lead to changes in the provided data. LEDiL Oy assumes no liability of any kind for the possible deviation from any provided data or any other damage resulting from the usage of the provided data.

The user agrees to this disclaimer and user agreement with the download or usage of the provided files.

#### LEDiL Oy

Joensuunkatu 7  
FI-24100 SALO  
Finland

#### LEDiL Inc.

228 West Page Street  
Suite D  
Sycamore IL 60178  
USA

#### Ledil Optics Technology (Shenzhen) Co., Ltd.

# 405 , Block B  
Casic Motor Building  
Shenzhen 518057  
P.R.CHINA

#### Local sales and technical support

[www.ledil.com/  
where\\_to\\_buy](http://www.ledil.com/where_to_buy)

#### Shipping locations

Poznan, Poland  
Hong Kong, China

#### Distribution Partners

[www.ledil.com/  
where\\_to\\_buy](http://www.ledil.com/where_to_buy)