

HB-2X2-RW

~50° wide beam

SPECIFICATION:

Dimensions	50.0 x 50.0
Height	8.5 mm
Fastening	glue, pin, screw
ROHS compliant	yes ⓘ

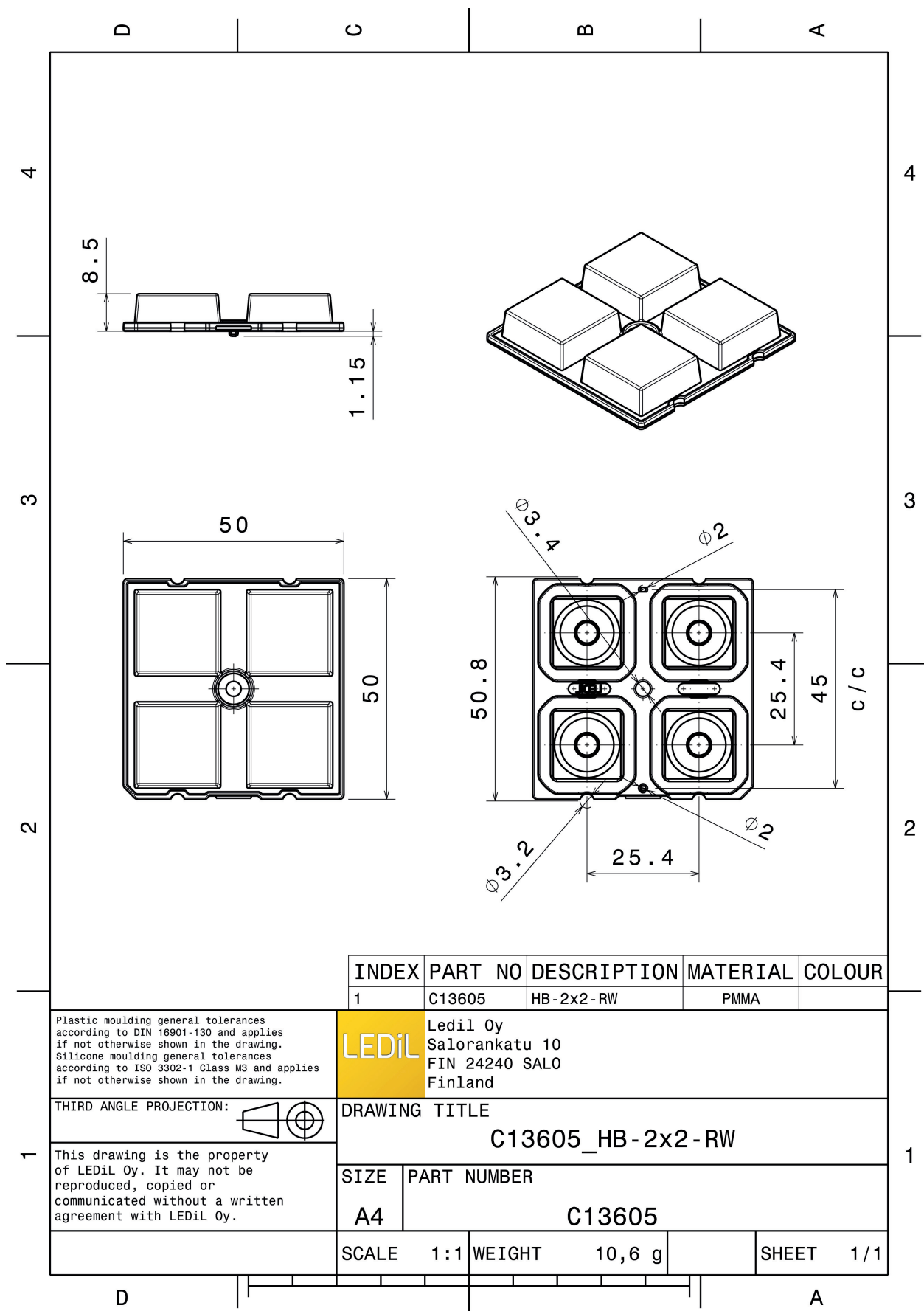
MATERIALS:

Component	Type	Material	Colour	Finish	Length (mm)
HB-2X2-RW	Multi-lens	PMMA	clear		



ORDERING INFORMATION:

Component	Qty in box	MOQ	MPQ	Box weight (kg)
C13605_HB-2X2-RW » Box size: 480 x 280 x 300 mm	800	160	160	9.3

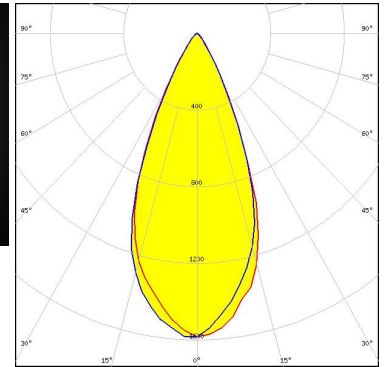
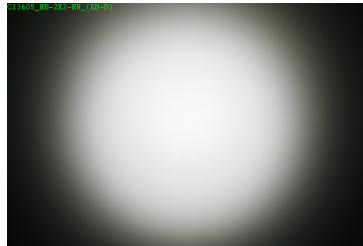


See also our general installation guide: www.ledil.com/installation_guide

OPTICAL RESULTS (MEASURED):



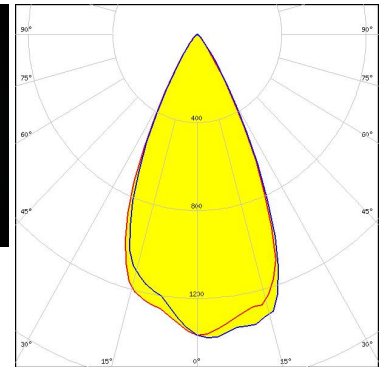
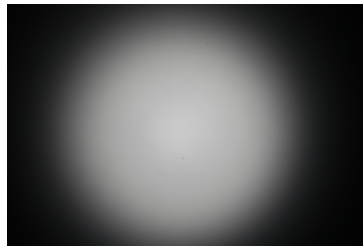
LED XB-D
FWHM / FWTM 46.0° / 68.0°
Efficiency 88 %
Peak intensity 1.6 cd/lm
LEDs/each optic 1
Light colour/type White
Required components:



Light distribution files



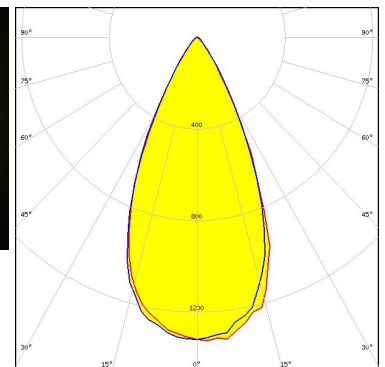
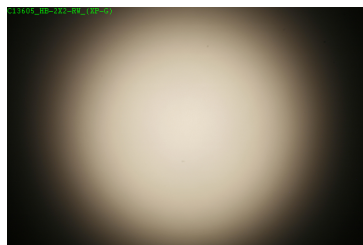
LED XP-E
FWHM / FWTM 51.0° / 72.0°
Efficiency 89 %
Peak intensity 1.4 cd/lm
LEDs/each optic 1
Light colour/type White
Required components:



Light distribution files



LED XP-G
FWHM / FWTM 50.0° / 76.0°
Efficiency 89 %
Peak intensity 1.3 cd/lm
LEDs/each optic 1
Light colour/type White
Required components:

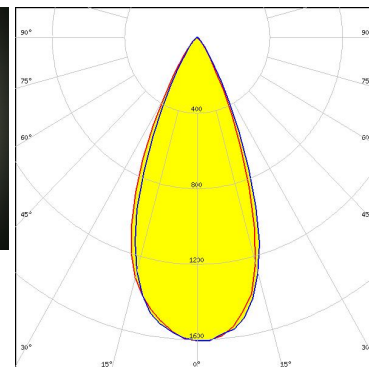
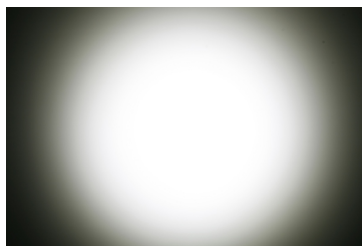


Light distribution files

OPTICAL RESULTS (MEASURED):



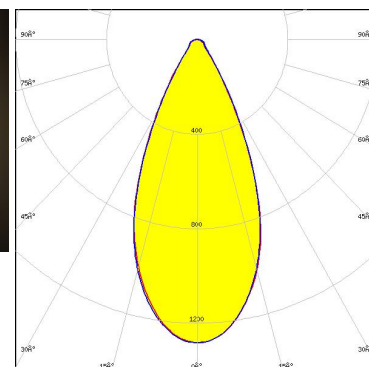
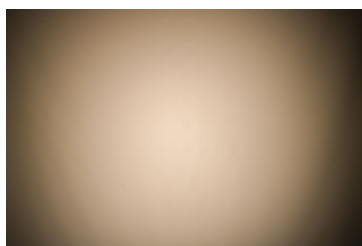
LED XT-E
FWHM / FWTM 44.0° / 68.0°
Efficiency 91 %
Peak intensity 1.6 cd/lm
LEDs/each optic 1
Light colour/type White
Required components:



Light distribution files



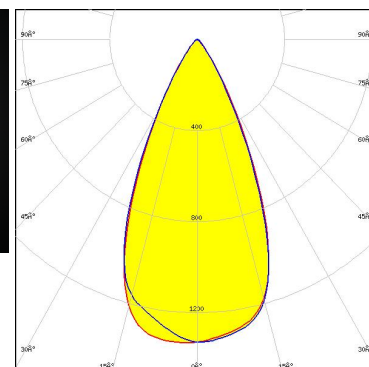
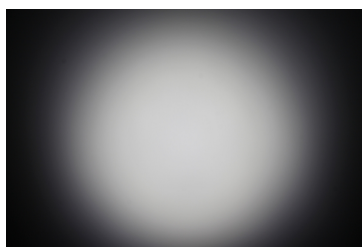
LED PL-BRICK HP 3800 2x8 SSG
FWHM / FWTM 47.0° / 75.0°
Efficiency 95 %
Peak intensity 1.3 cd/lm
LEDs/each optic 1
Light colour/type White
Required components:



Light distribution files



LED PrevaLED Brick HP 2x8
FWHM / FWTM 49.0° / 73.0°
Efficiency 89 %
Peak intensity 1.3 cd/lm
LEDs/each optic 1
Light colour/type White
Required components:

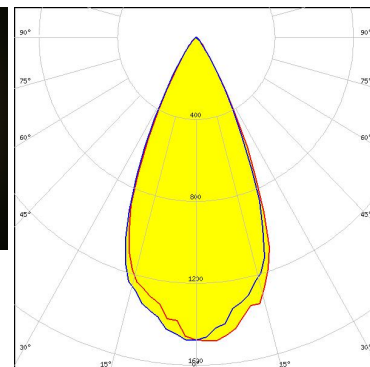
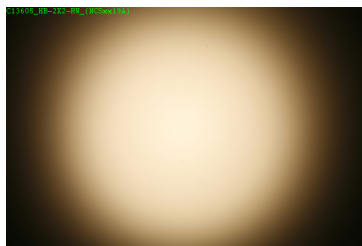


Light distribution files

OPTICAL RESULTS (MEASURED):



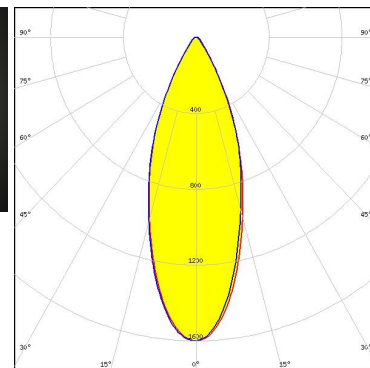
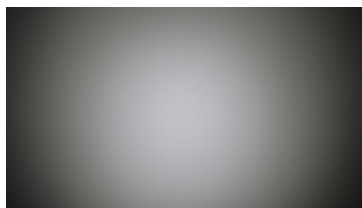
LED NCSxx19A
 FWHM / FWTM 49.0° / 71.0°
 Efficiency 90 %
 Peak intensity 1.5 cd/lm
 LEDs/each optic 1
 Light colour/type White
 Required components:



Light distribution files



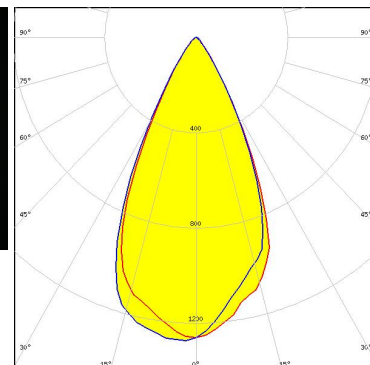
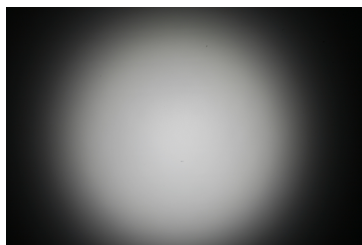
LED NVSxE21A
 FWHM / FWTM 37.0° / 68.0°
 Efficiency 84 %
 Peak intensity 1.6 cd/lm
 LEDs/each optic 1
 Light colour/type White
 Required components:



Light distribution files



LED NVSxx19A
 FWHM / FWTM 52.0° / 76.0°
 Efficiency 88 %
 Peak intensity 1.3 cd/lm
 LEDs/each optic 1
 Light colour/type White
 Required components:

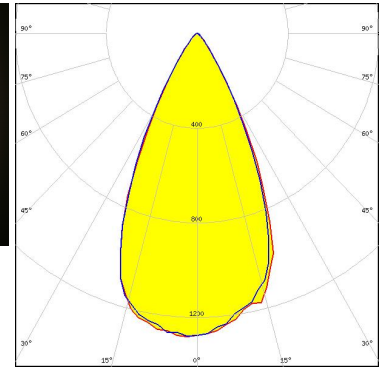
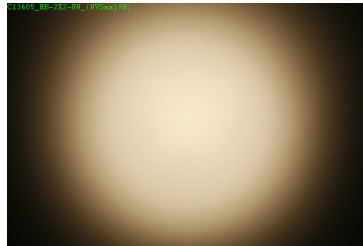


Light distribution files

OPTICAL RESULTS (MEASURED):



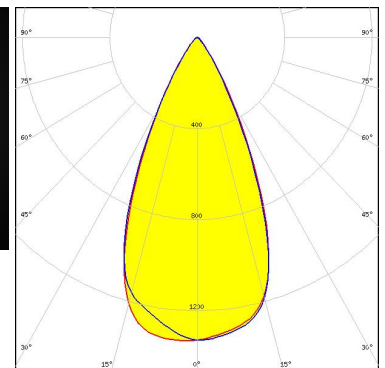
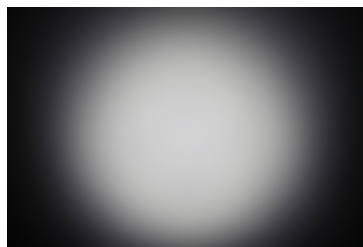
LED NVSxx19B/NVSxx19C
 FWHM / FWTM 51.0° / 76.0°
 Efficiency 90 %
 Peak intensity 1.3 cd/lm
 LEDs/each optic 1
 Light colour/type White
 Required components:



Light distribution files



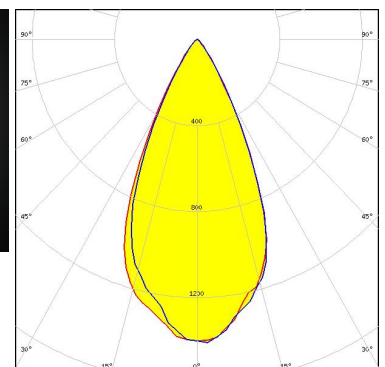
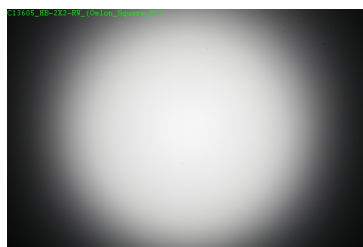
LED OSLOM Square CSSRM2/CSSRM3
 FWHM / FWTM 49.0° / 73.0°
 Efficiency 89 %
 Peak intensity 1.3 cd/lm
 LEDs/each optic 1
 Light colour/type White
 Required components:



Light distribution files



LED OSLOM Square PC
 FWHM / FWTM 50.0° / 73.0°
 Efficiency 90 %
 Peak intensity 1.4 cd/lm
 LEDs/each optic 1
 Light colour/type White
 Required components:

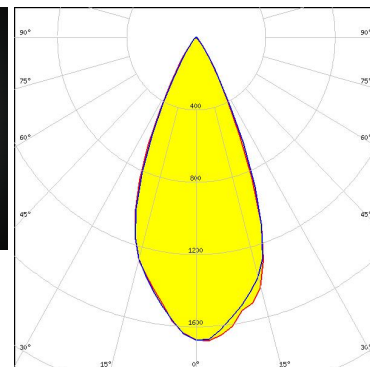
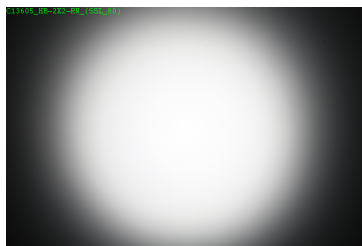


Light distribution files

OPTICAL RESULTS (MEASURED):

OSRAM
Opto Semiconductors

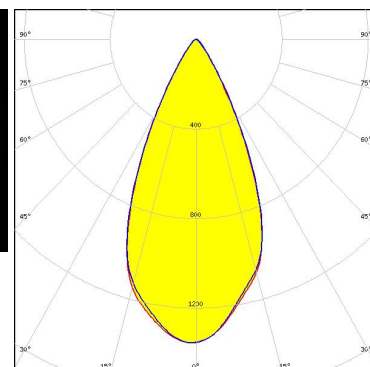
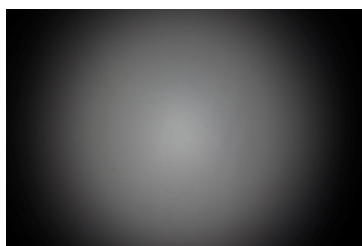
LED OSLON SSL 80
FWHM / FWTM 46.0° / 68.0°
Efficiency 90 %
Peak intensity 1.7 cd/lm
LEDs/each optic 1
Light colour/type White
Required components:



Light distribution files

SAMSUNG

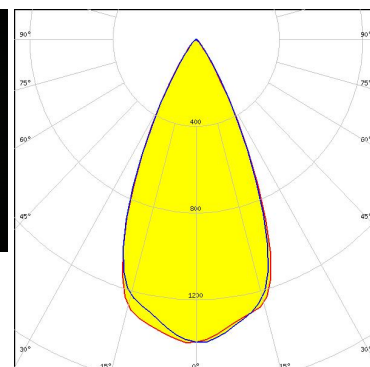
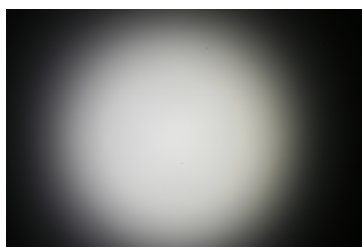
LED LH351Z
FWHM / FWTM 48.0° / 72.0°
Efficiency 90 %
Peak intensity 1.4 cd/lm
LEDs/each optic 1
Light colour/type White
Required components:



Light distribution files

SEKUL
SEOUL SEMICONDUCTOR

LED Z5M1/Z5M2
FWHM / FWTM 49.0° / 73.0°
Efficiency 90 %
Peak intensity 1.4 cd/lm
LEDs/each optic 1
Light colour/type White
Required components:

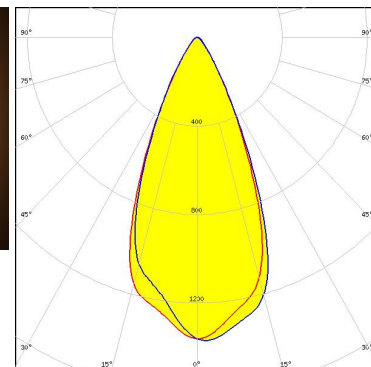
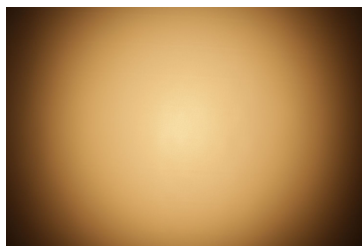


Light distribution files

OPTICAL RESULTS (MEASURED):



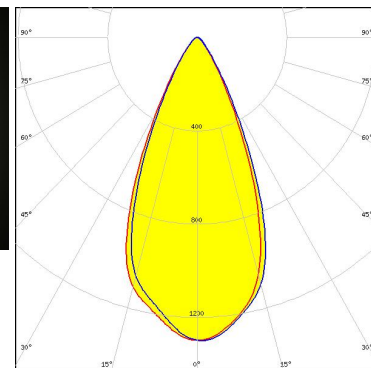
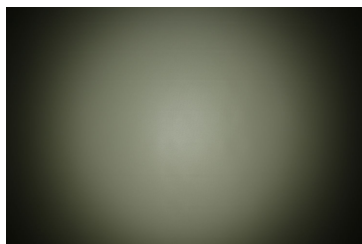
LED Z8Y15
FWHM / FWTM 46.0° / 71.0°
Efficiency 88 %
Peak intensity 1.4 cd/lm
LEDs/each optic 1
Light colour/type White
Required components:



Light distribution files



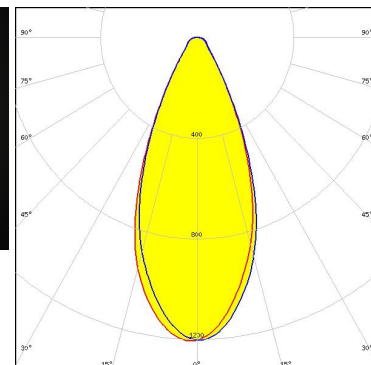
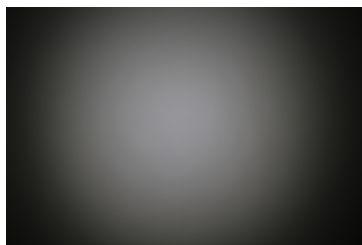
LED Z8Y19
FWHM / FWTM 47.0° / 74.0°
Efficiency 87 %
Peak intensity 1.3 cd/lm
LEDs/each optic 1
Light colour/type White
Required components:



Light distribution files



LED Z8Y22
FWHM / FWTM 45.0° / 78.0°
Efficiency 93 %
Peak intensity 1.2 cd/lm
LEDs/each optic 1
Light colour/type White
Required components:



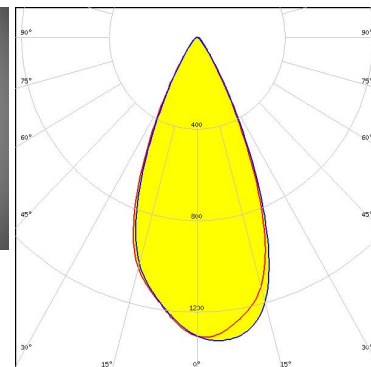
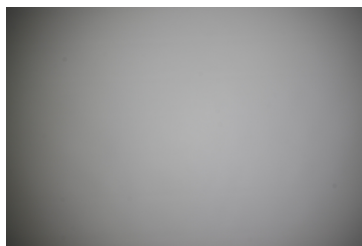
Light distribution files

OPTICAL RESULTS (MEASURED):

TOSHIBA

Leading Innovation >>>

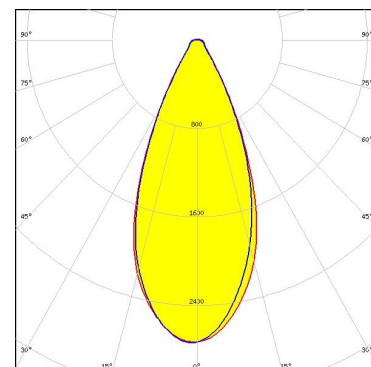
LED TL1L4
 FWHM / FWTM 47.0° / 70.0°
 Efficiency 83 %
 Peak intensity 1.3 cd/lm
 LEDs/each optic 1
 Light colour/type White
 Required components:



Light distribution files

TRIDONIC

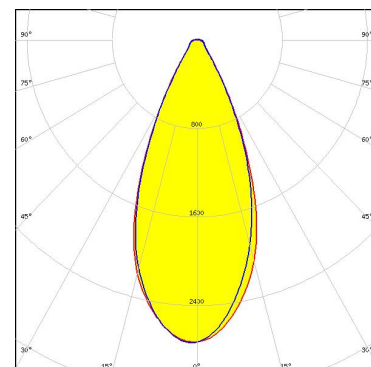
LED RLE G1 49x121mm 2000lm xxx EXC OTD
 FWHM / FWTM 45.0° / 74.0°
 Efficiency 94 %
 Peak intensity 1.4 cd/lm
 LEDs/each optic 1
 Light colour/type White
 Required components:



Light distribution files

TRIDONIC

LED RLE G1 49x133mm 2000lm xxx EXC OTD
 FWHM / FWTM 45.0° / 74.0°
 Efficiency 94 %
 Peak intensity 1.4 cd/lm
 LEDs/each optic 1
 Light colour/type White
 Required components:

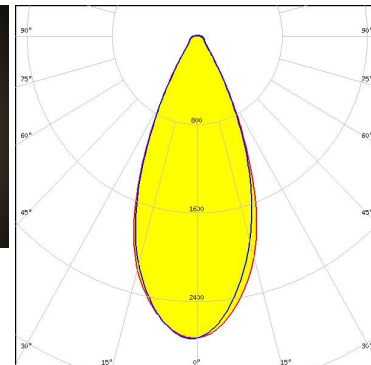
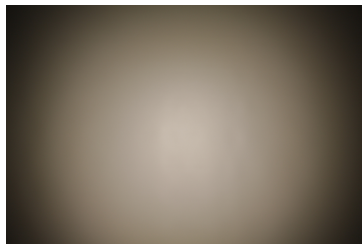


Light distribution files

OPTICAL RESULTS (MEASURED):

TRIDONIC

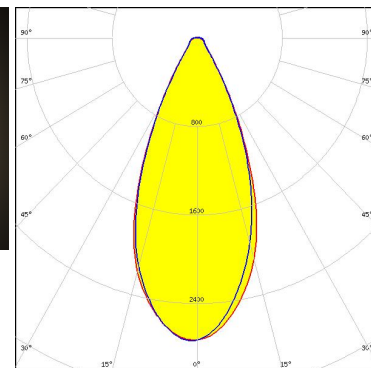
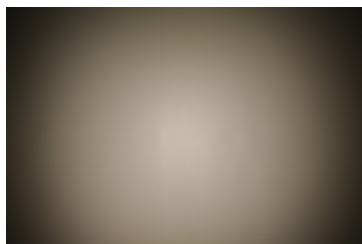
LED RLE G1 49x223mm 4000lm xxx EXC OTD
 FWHM / FWTM 45.0° / 74.0°
 Efficiency 94 %
 Peak intensity 1.4 cd/lm
 LEDs/each optic 1
 Light colour/type White
 Required components:



Light distribution files

TRIDONIC

LED RLE G1 49x245mm 4000lm xxx EXC OTD
 FWHM / FWTM 45.0° / 74.0°
 Efficiency 94 %
 Peak intensity 1.4 cd/lm
 LEDs/each optic 1
 Light colour/type White
 Required components:

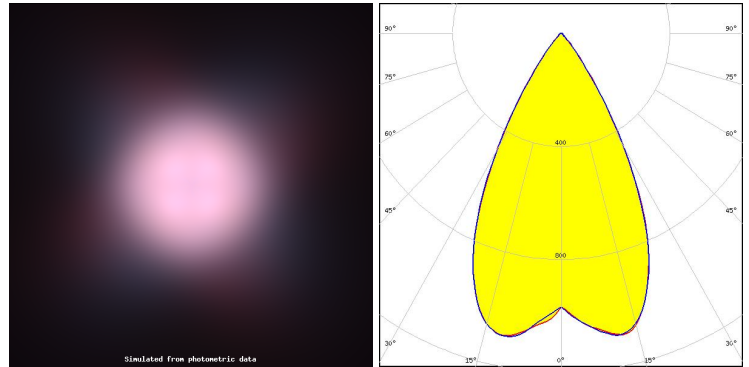


Light distribution files

OPTICAL RESULTS (SIMULATED):



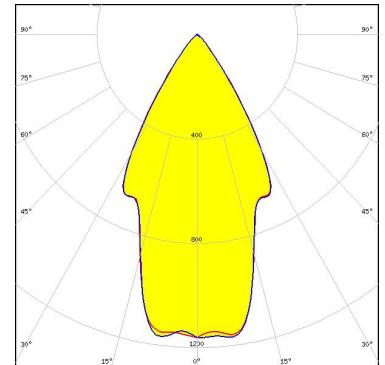
LED XQ-E HD
 FWHM / FWTM 57.0° / 78.0°
 Efficiency 97 %
 Peak intensity 1.2 cd/lm
 LEDs/each optic 4
 Light colour/type RGBW
 Required components:



Light distribution files



LED OSCONIQ C 3030
 FWHM / FWTM 58.0° / 80.0°
 Efficiency 89 %
 Peak intensity 1.2 cd/lm
 LEDs/each optic 1
 Light colour/type White
 Required components:

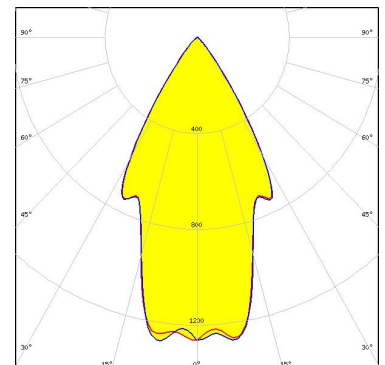


Protective plate, glass

Light distribution files



LED OSCONIQ C 3030
 FWHM / FWTM 58.0° / 78.0°
 Efficiency 97 %
 Peak intensity 1.3 cd/lm
 LEDs/each optic 1
 Light colour/type White
 Required components:



Light distribution files

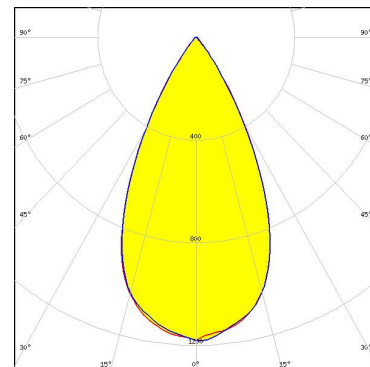
OPTICAL RESULTS (SIMULATED):

OSRAM
Opto Semiconductors

LED OSLON Square CSSRM2/CSSRM3
FWHM / FWTM 52.0° / 76.0°
Efficiency 88 %
Peak intensity 1.2 cd/lm
LEDs/each optic 1
Light colour/type White
Required components:

Protective plate, glass

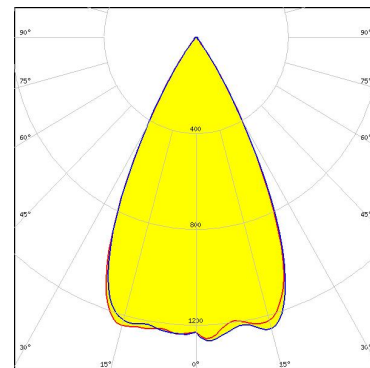
Light distribution files



SEOL
SEOUL SEMICONDUCTOR

LED Z8Y22T
FWHM / FWTM 54.0° / 71.0°
Efficiency 94 %
Peak intensity 1.3 cd/lm
LEDs/each optic 1
Light colour/type White
Required components:

Light distribution files



GENERAL INFORMATION:

NOTE: The typical beam angle will be changed by different color, chip size and chip position tolerance. The typical total beam angle is the full angle measured where the luminous intensity is half of the peak value.

MATERIALS:

As part of our continuous research and improvement processes, and to ensure the best possible quality and availability of our products, LEDiL reserves the right to change material grades without notice.

PRODUCT DATA USER AGREEMENT AND DISCLAIMER:

The measured data in the provided downloadable LEDiL Product Datasheets and Mechanical 2D-Drawings is rounded and provided as reference for planning. LEDiL Oy's optical specifications have been verified by conducting performance testing of the products in accordance with the company's quality system. The reported data are averaged results of multiple measurements with typical variation. LEDiL Oy reserves the right to without prior notification make changes and improvements to its products.

LEDiL Oy assumes neither warranty, nor guarantee nor any other liability of any kind for the contents and correctness of the provided data. The provided data has been generated with highest diligence but the provided data may in reality not represent the complete possible variation range of all intrinsic parameters. Therefore, in certain cases a deviation from the provided data could occur.

LEDiL Oy reserves the right to undertake technical changes of its products without further notification which could lead to changes in the provided data. LEDiL Oy assumes no liability of any kind for the possible deviation from any provided data or any other damage resulting from the usage of the provided data.

The user agrees to this disclaimer and user agreement with the download or usage of the provided files.

LEDiL Oy

Joensuunkatu 7
FI-24100 SALO
Finland

LEDiL Inc.

228 West Page Street
Suite D
Sycamore IL 60178
USA

Ledil Optics Technology (Shenzhen) Co., Ltd.

405 , Block B
Casic Motor Building
Shenzhen 518057
P.R.CHINA

Local sales and technical support

[www.ledil.com/
where_to_buy](http://www.ledil.com/where_to_buy)

Shipping locations

Poznan, Poland
Hong Kong, China

Distribution Partners

[www.ledil.com/
where_to_buy](http://www.ledil.com/where_to_buy)