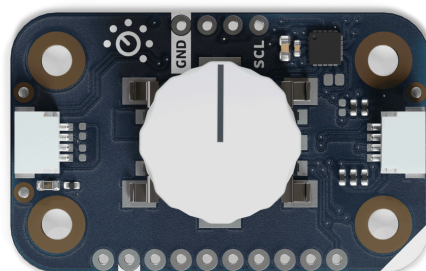


User Manual
SKU: ABX00107



Description

The Modulino® Knob features a **quadrature rotary encoder** (PEC11J-9215F-S0015) paired with an on-board **STM32C011F4 microcontroller**, enabling both precise rotational input and push-button interaction. The node communicates via I2C (Qwiic interface) by default, but can also be reprogrammed or accessed via other communication interfaces for advanced projects.

Target Areas

Maker, beginner, education



Contents

1 Application Examples	3
2 Features	4
2.1 Contents	4
3 Related Products	4
4 Rating	4
4.1 Recommended Operating Conditions	4
5 Power Tree	5
6 Block Diagram	5
7 Functional Overview	6
7.1 Technical Specifications	6
7.2 Pinout	7
7.3 Power Specifications	9
7.4 Mechanical Information	9
7.5 I2C Address Reference	10
7.5.1 Pull-up Resistors	11
8 Device Operation	11
8.1 Getting Started	11
8.2 Board Recovery	12
9 Certifications Summary	12
10 Declaration of Conformity CE DoC (EU)	12
11 Declaration of Conformity to EU RoHS & REACH 211 01/19/2021	
12 FCC WARNING	14
13 IC Caution	14
14 Conflict Minerals Declaration	14



1 Application Examples

- **User Interface Control** Implement smooth menu navigation, scrolling through options, or fine adjustment of parameters (e.g., volume, brightness) in your project.
- **Industrial/Mechanical Projects** Use rotary input for setting machine parameters, calibrating sensors, or controlling motor speed.
- **Educational Tools** Teach the concepts of rotary encoding, I2C interfacing, and microcontroller-based data handling using a simple, hands-on input device.



2 Features

- **Quadrature rotary encoder** with push-switch capability for rich user input.
- **STM32C011F4** microcontroller handling I2C communications and optional reprogramming.
- Operates at **3.3V** via the Qwiic interface; supports 2.0V–3.6V supply range internally.
- **SWD** interface on-board for firmware customization, plus optional UART lines.
- Ideal for **menu navigation**, fine-tuning controls, and interactive IoT or maker projects.

2.1 Contents

SKU	Name	Purpose	Quantity
ABX00107	Modulino® Knob	Quadrature rotary encoder with push switch	1
	I2C Qwiic cable	Compatible with the Qwiic standard	1

3 Related Products

- **SKU: ASX00027** – Arduino® Sensor Kit
- **SKU: K000007** – Arduino® Starter Kit
- **SKU: AKX00026** – Arduino® Oplà IoT Kit

4 Rating

4.1 Recommended Operating Conditions

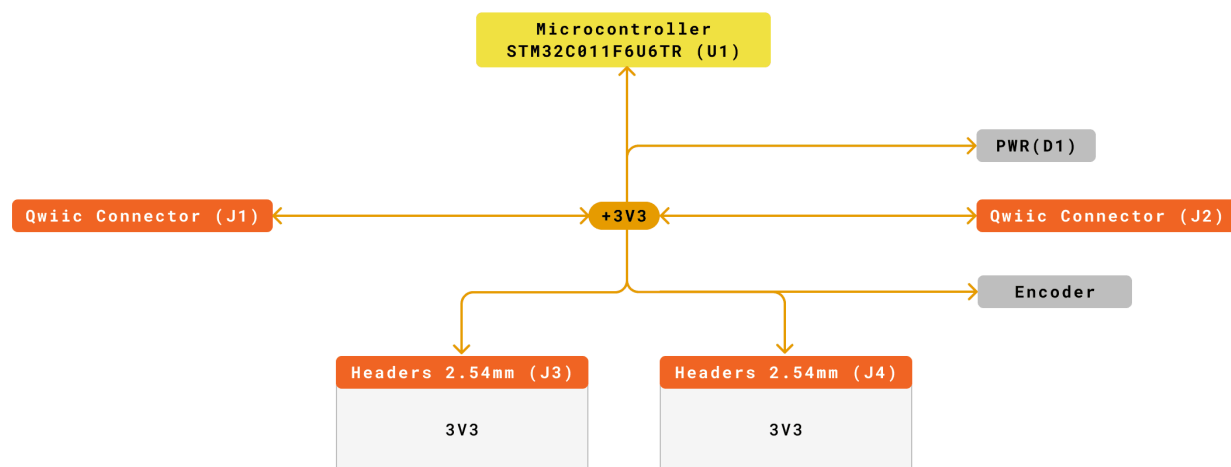
- **Microcontroller supply range:** 2.0V – 3.6V (STM32C011F4)
- **Powered at 3.3V** through the Qwiic interface (in accordance with the Qwiic standard)
- **Operating temperature:** –40 °C to +85 °C

Typical current consumption:

- ~3.4 mA (microcontroller + rotary encoder interface)

5 Power Tree

The power tree for the Modulino® node can be consulted below:



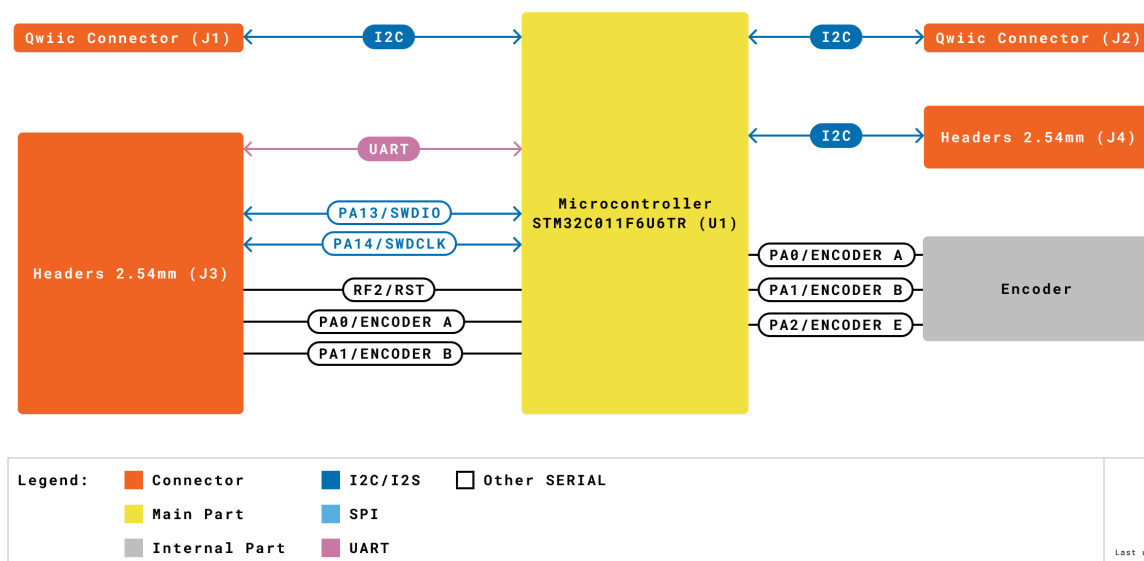
Legend:	Connector	+3V3
VIN	Main Part	+5V
VBUS	Internal Part	

Modulino Knob
SKU code: ASX00187
Power Tree
Last update: 05 Feb, 2025

Modulino® Knob Power Tree

6 Block Diagram

This module includes an STM32C011F4 microcontroller, reading the quadrature signals from the rotary encoder and a push switch. It communicates via I2C by default but can be customized via SWD for additional functionalities.



Modulino® Knob block diagram

7 Functional Overview

The Modulino® Knob node reads a **quadrature rotary encoder** (including push-switch action), translating positional and switch states into data accessible via I2C. The on-board MCU (STM32C011F4) can also support other protocols (UART, SPI, I2S) if reprogrammed. By default, I2C data allows host microcontrollers (e.g., Arduino® UNO R4 WiFi) to read knob rotation and button states easily.

7.1 Technical Specifications

Specification	Details
Microcontroller	STM32C011F4 (handles I2C, rotary encoder logic)
Encoder	PEC11J-9215F-S0015 (quadrature + push switch)
Encoder Range	360° (continuous rotation)
Supply Voltage	3.3 V
Power Consumption	~3.4 mA
Communication	I2C (Qwiic), SWD (debug/reprogram), optional UART

7.2 Pinout

Qwiic / I2C (1×4 Header)

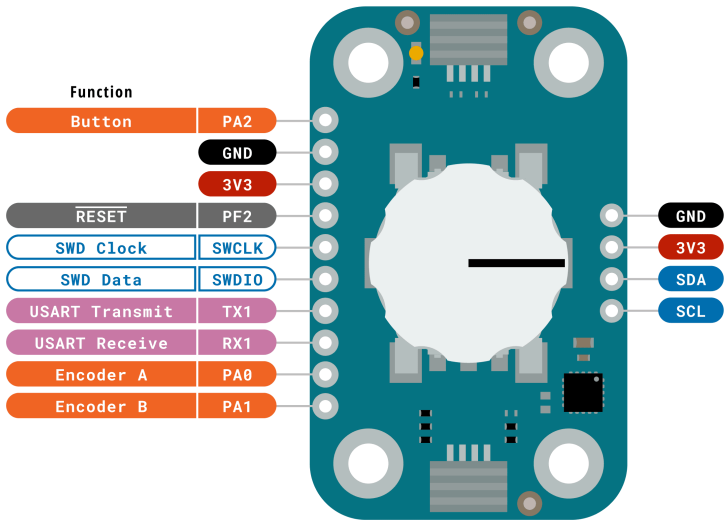
Pin	Function
GND	Ground
3.3V	Power Supply (3.3V)
SDA	I2C Data
SCL	I2C Clock

These pads and the Qwiic connectors share the same I2C bus at 3.3V.

Additional 1×10 Header (Knob & MCU Signals)

Pin	Function
PA2	Button
GND	Ground
3V3	3.3 V Power
PF2	RESET
SWCLK	SWD Clock
SWDIO	SWD Data
TX1	USART Transmit
RX1	USART Receive
PA0	Encoder A
PA1	Encoder B

Note: By default, the STM32C011F4 firmware manages the rotary encoder via I2C registers. Advanced users may modify this behavior by flashing custom code through SWD.



Legend:	Digital	I2C	Other SERIAL
	Power	Analog	SPI
	Ground	Main Part	UART/USART
			Analog
			PWM/Timer

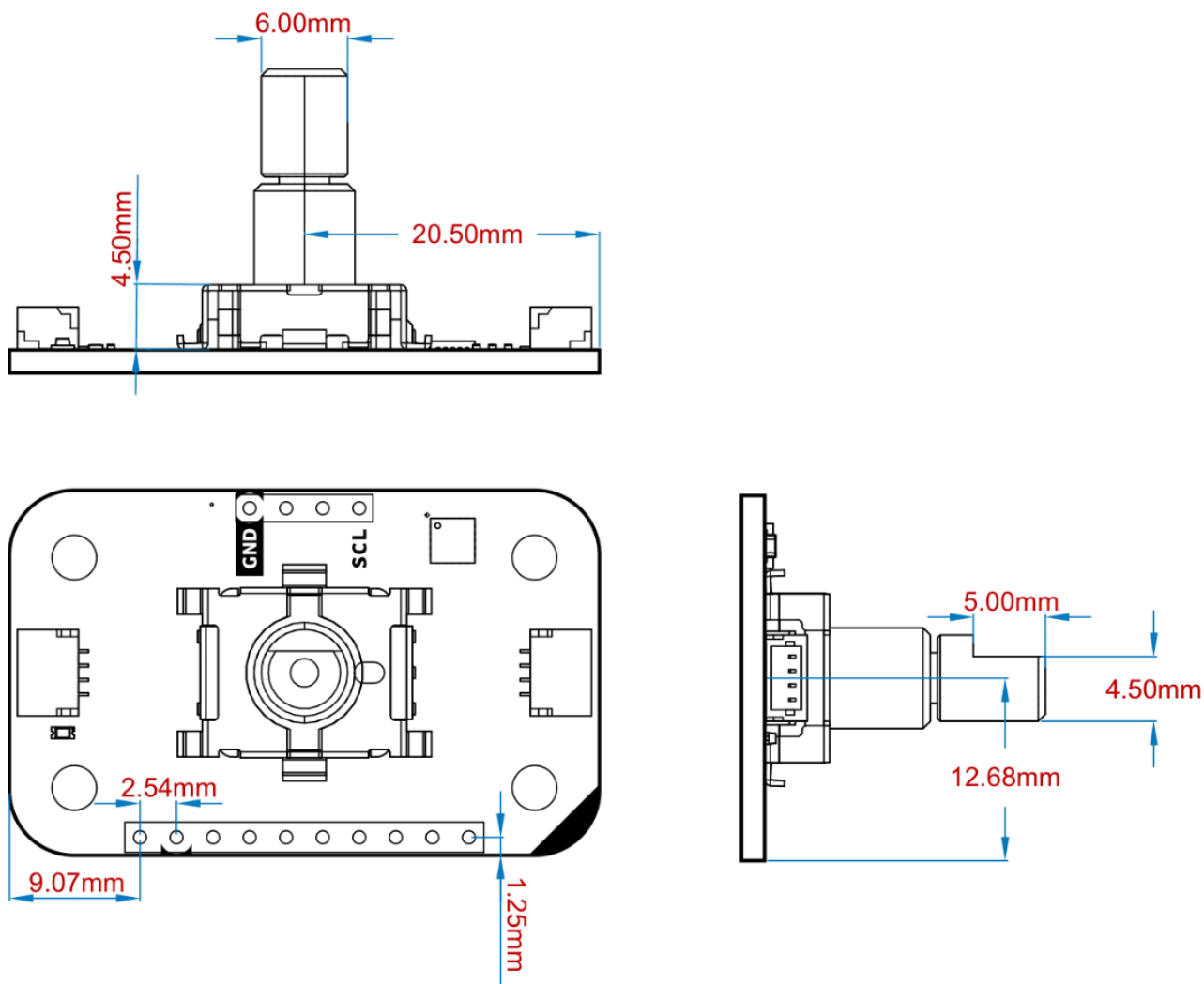
Modulino Knob
SKU code: ABX00107
Pinout
Last update: 18 Jun, 2024

Pinout Overview

7.3 Power Specifications

- **Nominal operating voltage:** 3.3V via Qwiic
- **MCU voltage range:** 2.0V–3.6V

7.4 Mechanical Information



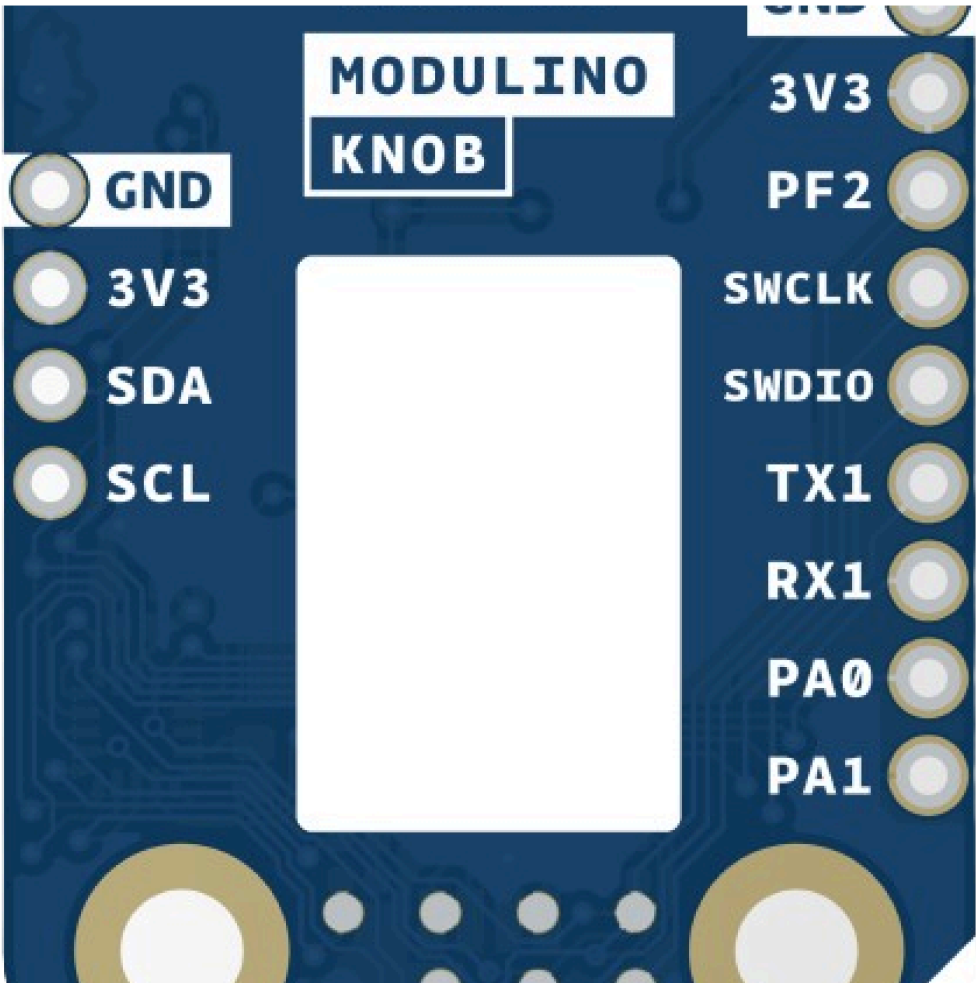
Modulino® Knob Mechanical Information

- Board dimensions: 41 mm × 25.36 mm
- Thickness: 1.6 mm (±0.2 mm)
- Four mounting holes (Ø 3.2 mm)
 - Hole spacing: 16 mm vertically, 32 mm horizontally

7.5 I2C Address Reference

Board Silk Name	Sensor	Modulino® I2C Address (HEX)	Editable Addresses (HEX)	Hardware I2C Address (HEX)
MODULINO KNOB	Quadrature Encoder + MCU	0x76	Any custom address (via FW config)	0x3A

Note: Default I2C address is **0x76**. You can change it through the Modulino® library or by flashing custom firmware. A white rectangle on the board silk can be used to label the new address.

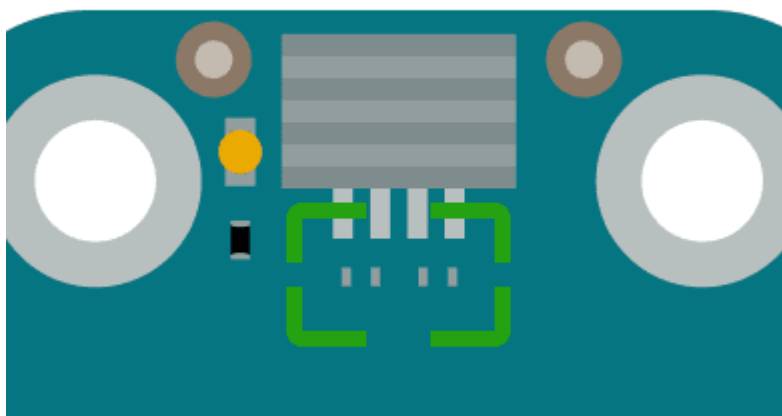


Blank silk for identification

7.5.1 Pull-up Resistors

The module has pads for optional I2C pull-up mounting in both data lines. No resistors are mounted by default but in case the resistors are need 4.7 K resistors in an SMD 0402 format are recommended.

These are positioned near the Qwiic connector on the power LED side.



Generic pull-up resistor position

8 Device Operation

The Modulino® Knob node acts as an I2C target device on the Qwiic bus. It detects rotation steps (increment/decrement), push-switch events, and reports them to the host controller. If the included firmware doesn't meet your needs, you can reprogram the STM32C011F4 via SWD.

8.1 Getting Started

Use any Arduino or other 3.3V microcontroller environment. An official Modulino® library may be available to streamline reading rotary values and push-switch states. Ensure your master device shares the same 3.3V reference and I2C bus.



8.2 Board Recovery

All Arduino® boards have a built-in bootloader which allows flashing the board via USB. In case a sketch locks up the processor and the board is not reachable anymore via USB, it is possible to enter bootloader mode by double-tapping the reset button right after the power-up.

Certifications

9 Certifications Summary

Certification	Status
CE/RED (Europe)	Yes
UKCA (UK)	Yes
FCC (USA)	Yes
IC (Canada)	Yes
RoHS	Yes
REACH	Yes
WEEE	Yes

10 Declaration of Conformity CE DoC (EU)

We declare under our sole responsibility that the products above are in conformity with the essential requirements of the following EU Directives and therefore qualify for free movement within markets comprising the European Union (EU) and European Economic Area (EEA).

11 Declaration of Conformity to EU RoHS & REACH 211

01/19/2021

Arduino boards are in compliance with RoHS 2 Directive 2011/65/EU of the European Parliament and RoHS 3 Directive 2015/863/EU of the Council of 4 June 2015 on the restriction of the use of certain hazardous substances in electrical and electronic equipment.

Substance	Maximum limit (ppm)
Lead (Pb)	1000
Cadmium (Cd)	100
Mercury (Hg)	1000
Hexavalent Chromium (Cr6+)	1000
Poly Brominated Biphenyls (PBB)	1000
Poly Brominated Diphenyl ethers (PBDE)	1000
Bis(2-Ethylhexyl) phthalate (DEHP)	1000
Benzyl butyl phthalate (BBP)	1000
Dibutyl phthalate (DBP)	1000
Diisobutyl phthalate (DIBP)	1000

Exemptions: No exemptions are claimed.

Arduino Boards are fully compliant with the related requirements of European Union Regulation (EC) 1907 /2006 concerning the Registration, Evaluation, Authorization and Restriction of Chemicals (REACH). We declare none of the SVHCs (<https://echa.europa.eu/web/guest/candidate-list-table>), the Candidate List of Substances of Very High Concern for authorization currently released by ECHA, is present in all products (and also package) in quantities totaling in a concentration equal or above 0.1%. To the best of our knowledge, we also declare that our products do not contain any of the substances listed on the "Authorization List" (Annex XIV of the REACH regulations) and Substances of Very High Concern (SVHC) in any significant amounts as specified by the Annex XVII of Candidate list published by ECHA (European Chemical Agency) 1907 /2006/EC.



12 FCC WARNING

This device complies with part 15 of the FCC Rules.

Operation is subject to the following two conditions:

(1) This device may not cause harmful interference, and (2) this device must accept any interference received, including interference that may cause undesired operation.

13 IC Caution

This device complies with Industry Canada licence-exempt RSS standard(s).

Operation is subject to the following two conditions:

(1) This device may not cause interference, and (2) this device must accept any interference, including interference that may cause undesired operation of the device.

14 Conflict Minerals Declaration

As a global supplier of electronic and electrical components, Arduino is aware of our obligations with regard to laws and regulations regarding Conflict Minerals, specifically the Dodd-Frank Wall Street Reform and Consumer Protection Act, Section 1502. Arduino does not directly source or process conflict minerals such as Tin, Tantalum, Tungsten, or Gold. Conflict minerals are contained in our products in the form of solder or as a component in metal alloys. As part of our reasonable due diligence, Arduino has contacted component suppliers within our supply chain to verify their continued compliance with the regulations. Based on the information received thus far we declare that our products contain Conflict Minerals sourced from conflict-free areas.

Company Information

Company name	Arduino SRL
Company Address	Via Andrea Appiani, 25 - 20900 MONZA (Italy)

Reference Documentation

Ref	Link
Arduino IDE (Desktop)	https://www.arduino.cc/en/Main/Software
Arduino Courses	https://www.arduino.cc/education/courses
Arduino Documentation	https://docs.arduino.cc/
Arduino IDE (Cloud)	https://create.arduino.cc/editor
Cloud IDE Getting Started	https://docs.arduino.cc/cloud/web-editor/tutorials/getting-started/getting-started-web-editor
Project Hub	https://projecthub.arduino.cc/
Library Reference	https://github.com/arduino-libraries/
Online Store	https://store.arduino.cc/

Revision History

Date	Revision	Changes
01/07/2025	4	Certification
17/06/2025	3	Nomenclature updates
23/05/2025	2	Fixed pinout table, power info, removed unrelated characteristics
14/05/2025	1	First release