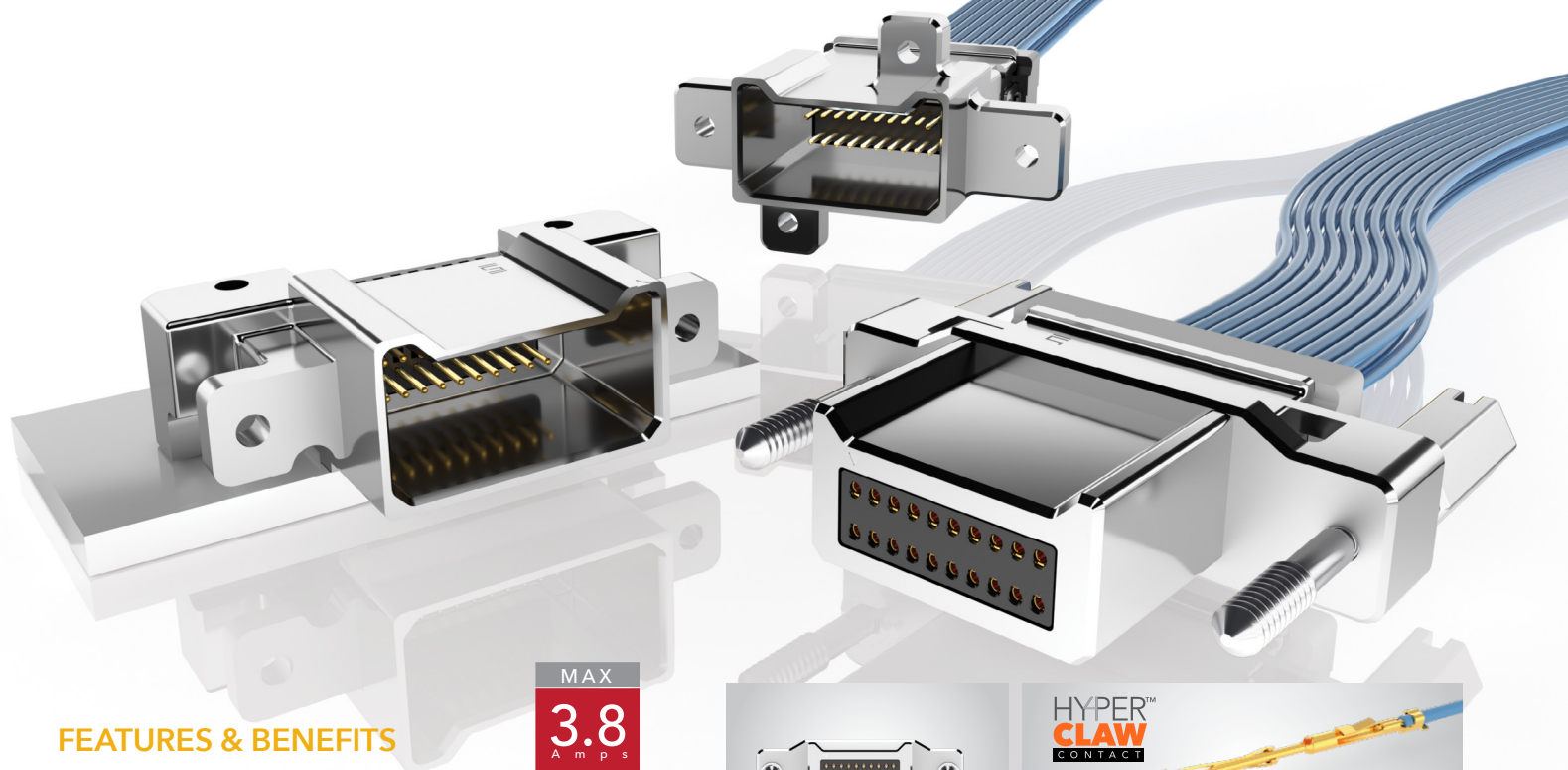
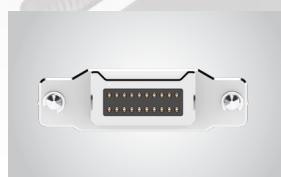


# ULTRA RUGGED I/O SYSTEMS



## FEATURES & BENEFITS

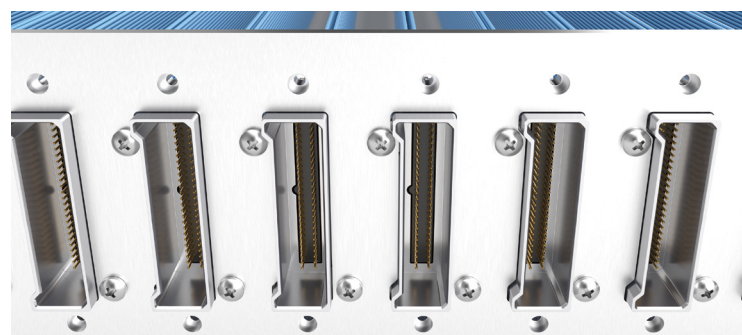
- Small form factor
- Four points of contact for a reliable connection and high mating cycles
- Up to 40 positions per row
- Cable-to-cable & cable-to-board solutions
- EMI shielding limits signal degradation and optimizes performance
- Through-hole or surface mount
- 28 & 30 AWG cable
- Availability of contacts (high-speed, RF, power) in 1 to 5 block configurations (See page 231)



Shown actual size  
at 20 total positions



Hyper Claw™ Hyperboloid-type contact  
for extreme high mating cycles



Extreme density with up to 1,450 total I/Os in a 1RU panel  
(29 cables at 50 total I/Os each)

## KEY SPECIFICATIONS

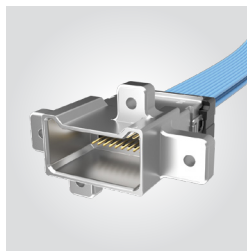
SERIES	INSULATOR MATERIAL	CONTACT MATERIAL	SHIELD MATERIAL	PLATING	OPERATING TEMP RANGE	CURRENT RATING	VOLTAGE RATING
P1PD(X), B1SD(X), P1M	Liquid Crystal Polymer	Beryllium Copper	Zinc Alloy	Au over 50 μ" (1.27 μm) Ni	-10 °C to +80 °C (PVC) -40 °C to +125 °C (*Teflon™ Fluoropolymer)	3.8 A per pin (2 pins powered)	200 VAC/ 282 VDC
B1SM		Copper Alloy		50 μ" (1.27 μm) Au center contact	Testing Now!	Testing Now!	Testing Now!
P1SM				30 μ" (0.76 μm) Au center contact			

\*Teflon™ is a trademark of The Chemours Company FC, LLC used under license by Samtec.

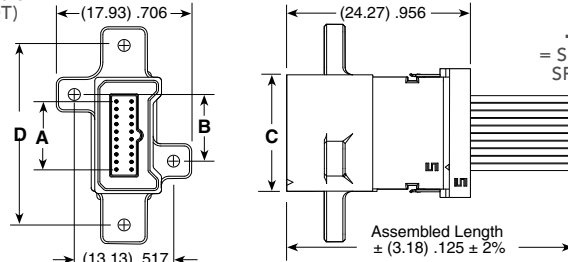
**(1.00 mm) .0394" PITCH • PANEL MOUNT I/O CABLE/COMPONENTS**

SERIES	NO. OF POSITIONS	WIRE GAUGE	COLOR CODE	PLATING	ASSEMBLED LENGTH	END OPTION	PINOUT
<b>P1PD</b> = Double Row Panel Mount PVC Cable	<b>-10, -15, -25, -30</b> (Per Row)	<b>-28</b> = 28 AWG	(Leave blank for standard wire)	<b>-H</b> = 30 μ" (0.76 μm) Gold on contact area, Gold flash on tail	<b>-"XX.X"</b> = Length in inches 06.0" (152.4 mm) minimum	(Leave blank for single ended)	(Leave blank for single ended)
<b>P1PDT</b> = Double Row Panel Mount Blue *Teflon™ Fluoropolymer Cable		<b>-30</b> = 30 AWG	<b>C</b> = Color Code Wire (Not available with P1PDT)			<b>-B</b> = B1SD & B1SDT	<b>1</b> = Pin 1 to Pin 1
						<b>-S</b> = SFSD & SFSDT	<b>2</b> = Pin 1 to Pin 2
							<b>3</b> = Pin 1 to Pin N
							<b>4</b> = Pin 1 to Pin N-1

**P1PD, P1PDT**  
Cable Mates:  
B1SD, B1SDT



P1PD  
PRELIMINARY



P1PDX-10-XXX-H-XX.X SHOWN

NO. OF POSITIONS	A	B	C	D
-10	(9.00) .354	(8.79) .346	(15.39) .606	(23.75) .935
-15	(14.00) .551	(13.79) .543	(20.39) .803	(28.75) 1.132
-25	(24.00) .945	(23.79) .937	(30.39) 1.196	(38.75) 1.526
-30	(29.00) 1.142	(28.79) 1.133	(35.39) 1.393	(43.75) 1.722

\*Teflon™ is a trademark of The Chemours Company FC, LLC used under license by Samtec.

**Notes:**  
Teflon™ Fluoropolymer Cable is intended for crimp only. Contact Samtec for solderable cable applications.

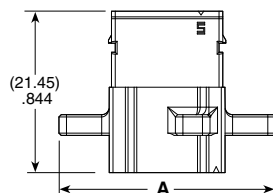
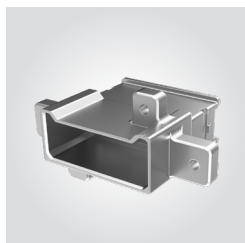
Some lengths, styles and options are non-standard, non-returnable.

**P1PD & P1PDT CABLE HOLDER  
(Required for use with IPP1)**

SERIES	NUMBER OF POSITIONS
P1PDR	-10, -15, -25, -30

View complete specifications at: [samtec.com?P1PD](http://samtec.com?P1PD) & [samtec.com?P1PDT](http://samtec.com?P1PDT)

P1PDS	NO. OF POSITIONS	N
	<b>-10, -15, -25, -30</b>	



NO. OF POSITIONS	A
-10	(28.75) 1.132
-15	(33.75) 1.329
-25	(43.75) 1.722
-30	(48.75) 1.920

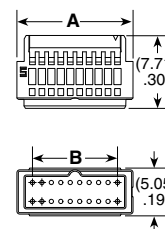
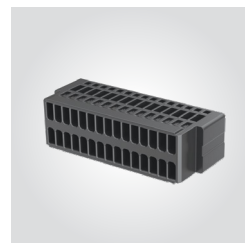
**Note:**  
Some lengths, styles and options are non-standard, non-returnable.

**TOOLING**

Hand Tool: CAT-HT-1145-2830-12	Mini Applicator: CAT-MC-1145-2830-XX-03
-----------------------------------	--

For more tooling information, visit [samtec.com/tooling](http://samtec.com/tooling)

IPP1	NO. OF POSITIONS	1
	<b>-10, -15, -25, -30</b>	

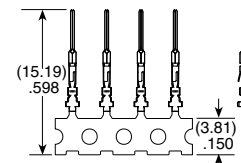


NO. OF POSITIONS	A	B
-10	(12.290) .484	(9.00) .354
-15	(17.290) .681	(14.00) .551
-25	(27.290) 1.074	(24.00) .945
-30	(32.290) 1.271	(29.00) 1.142

TC145	01	PLATING	PACKAGING
-------	----	---------	-----------



**-H**  
= 30 μ" (0.76 μm)  
Gold on contact area,  
Gold flash on tail



**-R**  
= Full Reel  
(25,000 Terminals  
Per Reel)

**-M**  
= Mini Reel  
(1,000 to 5,000  
Terminals Per Reel)

**-B**  
= Bubble Bag  
(35 Terminals)

View complete specifications at: [samtec.com?P1PDS](http://samtec.com?P1PDS), [samtec.com?IPP1](http://samtec.com?IPP1) & [samtec.com?TC145](http://samtec.com?TC145)