

DO NOT
SCALE FROM
THIS PRINT

DESIGNED AND DIMENSIONED IN INCHES[MILLIMETERS]
ALL DIMENSIONS REFERENCE EXCEPT AS SHOWN

SMPM-PC-P-XX-ST-MT-X

GENDER
-PC: PLUG CATCHER'S MITT

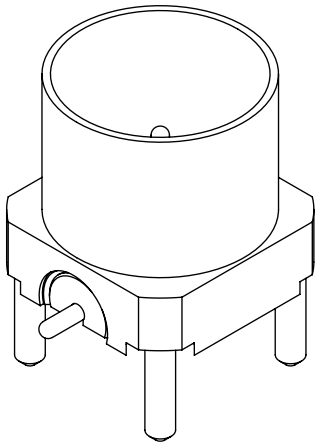
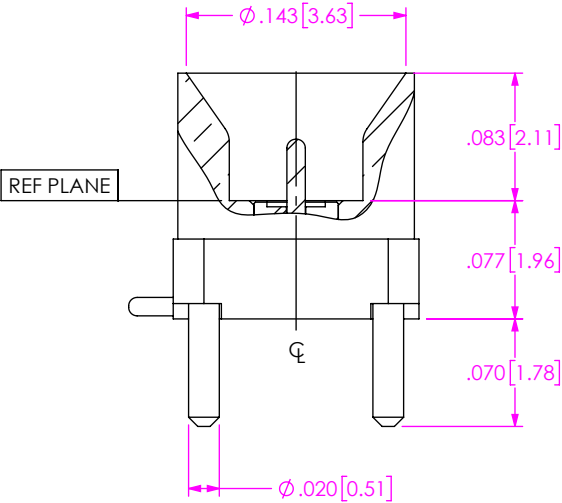
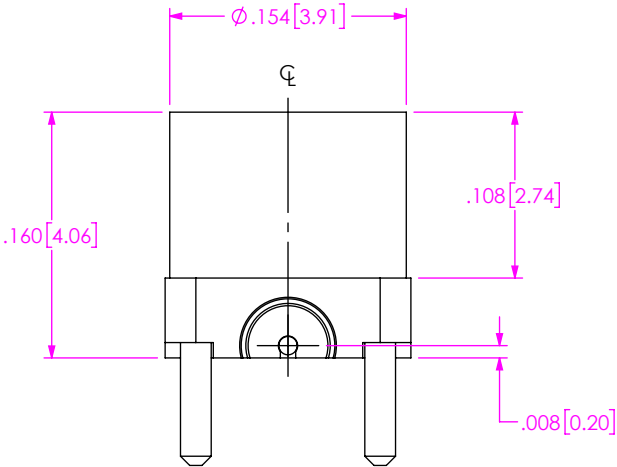
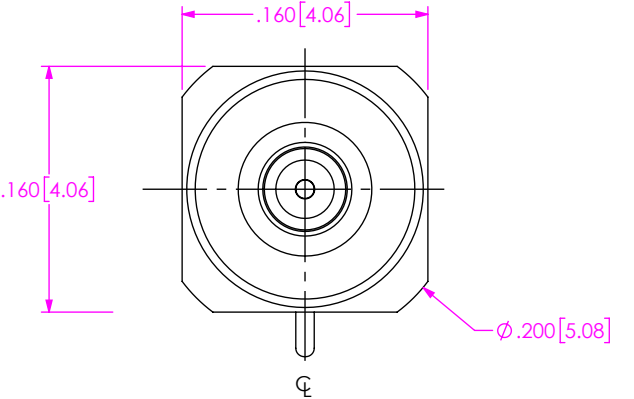
TYPE
-P: PCB

FINISH
-EG: 50μ" HEAVY GOLD CENTER CONTACT,
10μ" GOLD OUTER BODY

OPTION
-1

TERMINATION
-MT: MIXED TECHNOLOGY

ORIENTATION
-ST: STRAIGHT



- NOTES:
1. MATERIAL:
BEADS: VICTREX POLYMER.
CONTACT: BERYLLIUM COPPER.
BODY: BRASS ALLOY.
2. FINISH:
CONTACT, OUTER CONTACT:
-G: GOLD OVER NICKEL PLATE, 10-30 μIN MIN
GOLD OVER 50-100 μIN MIN NICKEL.

PROPRIETARY NOTE
THIS DOCUMENT CONTAINS CONFIDENTIAL AND
PROPRIETARY INFORMATION AND ALL DESIGN,
MANUFACTURING, REPRODUCTION, USE, PATENT RIGHTS
AND SALES RIGHTS ARE EXPRESSLY RESERVED BY SAMTEC,
INC. THIS DOCUMENT SHALL NOT BE DISCLOSED, IN WHOLE
OR PART, TO ANY UNAUTHORIZED PERSON OR ENTITY NOR
REPRODUCED, TRANSFERRED OR INCORPORATED IN ANY
OTHER PROJECT IN ANY MANNER WITHOUT THE EXPRESS
WRITTEN CONSENT OF SAMTEC, INC.

DO NOT SCALE DRAWING
SHEET SCALE: 8:1

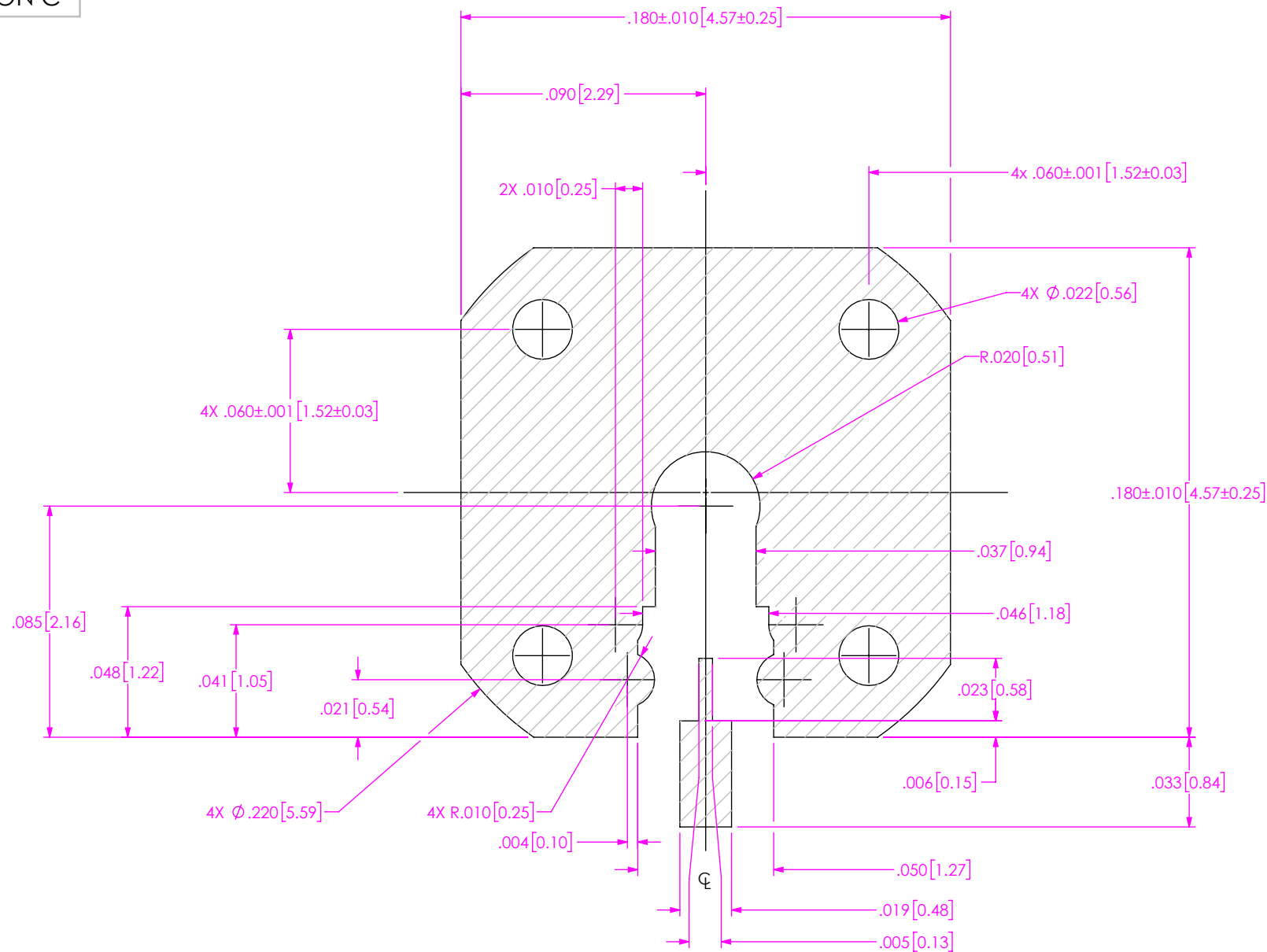
samtec

520 PARK EAST BLVD, NEW ALBANY, IN 47150
PHONE: 812-944-6733 FAX: 812-948-5047
e-Mail info@SAMTEC.com code 55322

DESCRIPTION:
SMPM PLUG MIXED TECHNOLOGY

DWG. NO.
SMPM-PC-P-XX-ST-MT-X

BY: MATT M. 3/22/2022 SHEET 1 OF 3



RECOMMENDED FOOTPRINT

PROPRIETARY NOTE
 THIS DOCUMENT CONTAINS CONFIDENTIAL AND PROPRIETARY INFORMATION AND ALL DESIGN, MANUFACTURING, REPRODUCTION, USE, PATENT RIGHTS AND SALES RIGHTS ARE EXPRESSLY RESERVED BY SAMTEC, INC. THIS DOCUMENT SHALL NOT BE DISCLOSED, IN WHOLE OR PART, TO ANY UNAUTHORIZED PERSON OR ENTITY NOR REPRODUCED, TRANSFERRED OR INCORPORATED IN ANY OTHER PROJECT IN ANY MANNER WITHOUT THE EXPRESS WRITTEN CONSENT OF SAMTEC, INC.

DO NOT SCALE DRAWING

SHEET SCALE: 18:1

samtec

520 PARK EAST BLVD, NEW ALBANY, IN 47150
 PHONE: 812-944-6733 FAX: 812-948-5047
 e-Mail info@SAMTEC.com code 55322

DESCRIPTION:

SMPM PLUG MIXED TECHNOLOGY

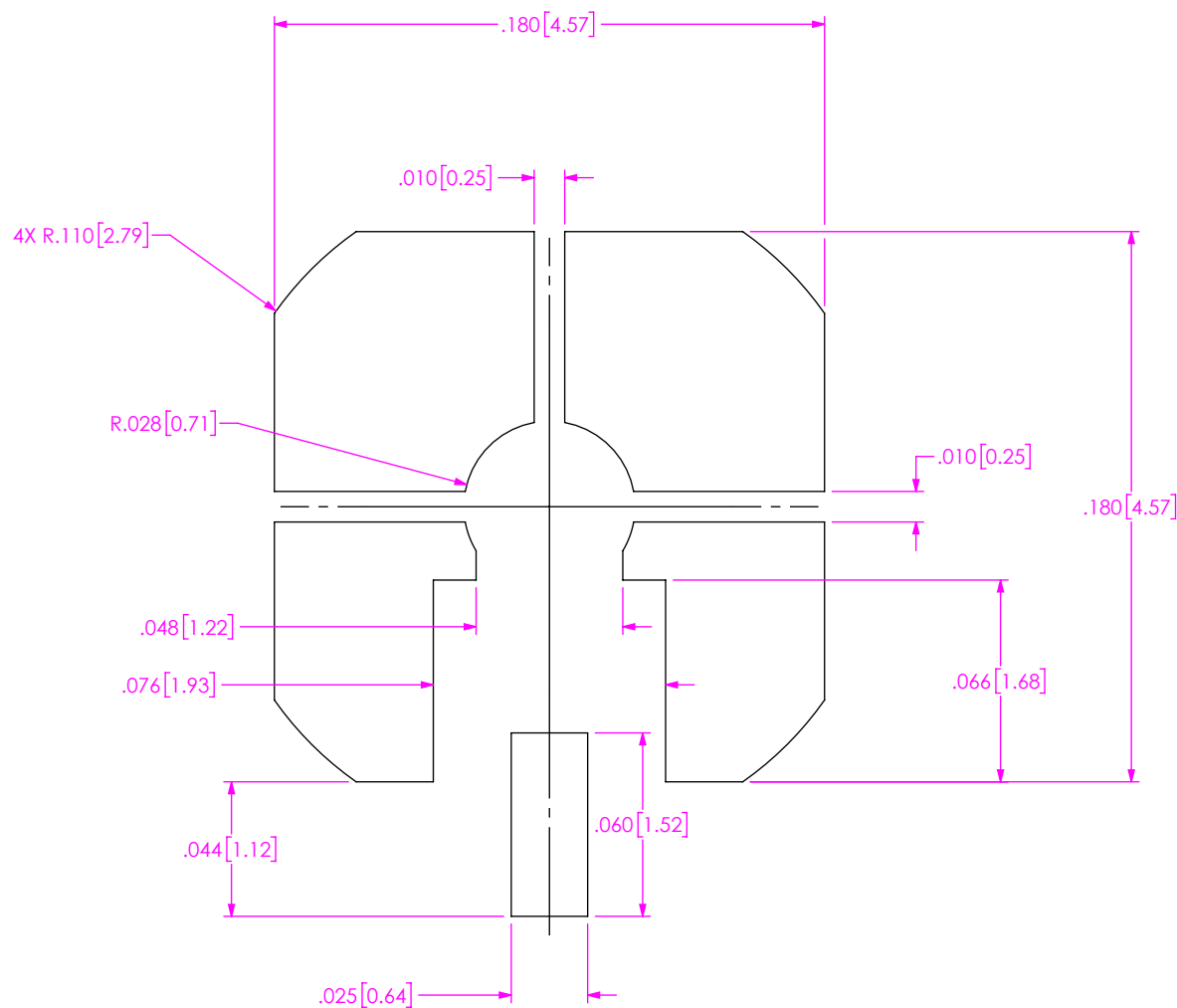
DWG. NO.

SMPM-PC-P-XX-ST-MT-X

BY: MATT M.


3/22/2022

SHEET 2 OF 3



RECOMMENDED STENCIL APERTURE LAYOUT

NOTES:
RECOMMENDED STENCIL THICKNESS = .005".

<p>* PROPRIETARY NOTE *</p> <p>THIS DOCUMENT CONTAINS CONFIDENTIAL AND PROPRIETARY INFORMATION AND ALL DESIGN, MANUFACTURING, REPRODUCTION, USE, PATENT RIGHTS AND SALES RIGHTS ARE EXPRESSLY RESERVED BY SAMTEC, INC. THIS DOCUMENT SHALL NOT BE DISCLOSED, IN WHOLE OR PART, TO ANY UNAUTHORIZED PERSON OR ENTITY NOR REPRODUCED, TRANSFERRED OR INCORPORATED IN ANY OTHER PROJECT IN ANY MANNER WITHOUT THE EXPRESS WRITTEN CONSENT OF SAMTEC, INC.</p>	
DO NOT SCALE DRAWING	 520 PARK EAST BLVD, NEW ALBANY, IN 47150 PHONE: 812-944-6733 FAX: 812-948-5047 e-Mail info@SAMTEC.com code 55322
	DESCRIPTION: SMPM PLUG MIXED TECHNOLOGY
	DWG. NO. SMPM-PC-P-XX-ST-MT-X
SHEET SCALE: 16:1	
BY: MATT M. 3/22/2022 SHEET 3 OF 3	