

50 Ω SMB TO 4 GHz

SMB Cable Assemblies RF174, RF178, RF316



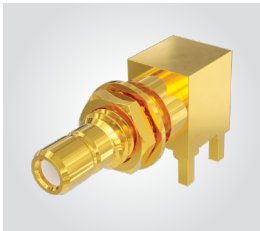
SERIES	END 1 CONNECTOR	END 2 CONNECTOR	OVERALL LENGTH
RF174 = RG 174 Cable	-07SP1 = SMB Straight Plug		-“XXXX” = Overall Length in millimeters
RF178 = RG 178 Cable	-07RP1 = SMB Right-angle Plug		-0100 (100 mm) 3.94" minimum
RF316 = RG 316 Cable, Single Braid Shield	-07BJ1 = SMB Bulkhead Jack		
	-07BJ2 = SMB Bulkhead Jack (RF178 only)		

ALSO AVAILABLE

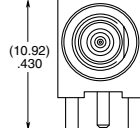
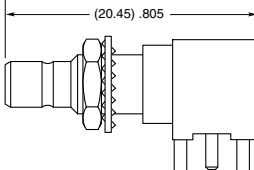
50 Ω: MCX, MMCX, SMA, BNC, TNC,
N Type = RF174, RF178, RF316

SMB Board Connectors SMB5-TH

Cable Mates:
RF174, RF178, RF316,
GRF1H-C, IJ5H



SMB5	GENDER	TYPE	PLATING	ORIENTATION	TERMINATION
	-J = Jack	-P = PCB Mount	-H = 30 μ" (0.76 μm) Gold center contact, 3 μ" (0.08 μm) Gold outer contact	-RA = Right-angle	-TH1 = Through-hole

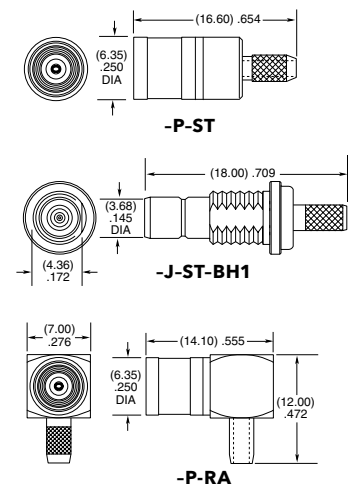



SMB Cable Connectors SMB5-CA



CONNECTORS FOR INDUSTRY STANDARD CABLES	
SMB5-P-C-H-ST-CA1	RG 174/316 Cable
SMB5-P-C-H-RA-CA1	RG 174/316 Cable
SMB5-J-C-H-ST-CA2	RG 178 Cable
SMB5-J-C-H-ST-BH1	RG 316 Cable, Bulkhead

P-C = Cable Plug
J-C = Cable Jack
H = Plating (30 μ" Gold center contact, 3 μ" Gold on outer contact)
ST = Straight
RA = Right-angle



Supplied with pins, washers,
nuts and ferrules. See website
for dimensions.