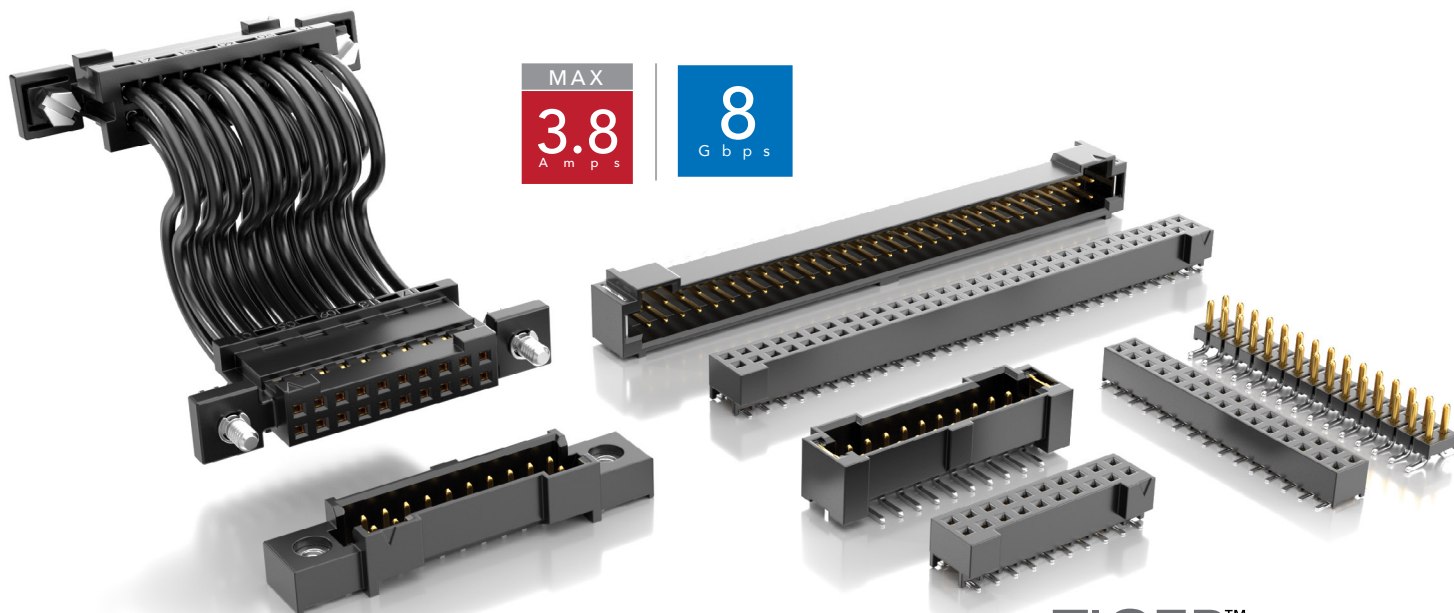


RUGGED TIGER EYE™ SYSTEMS

(2.00 mm) .0787" PITCH



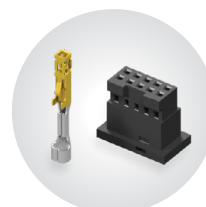
FEATURES & BENEFITS

- Rugged Tiger Eye™ contact system for high reliability
- Wide range of stack heights (SMM/TMM Series)
- Right-angle mating headers available
- Optional metal latching, screw downs, weld tabs and locking clips
- Surface mount or through-hole
- Single or double row
- Wire to board assemblies available in 24-30 AWG PVC or *Teflon™ Fluoropolymer (See page 256). Contact asp@samtec.com for custom solutions
- Severe Environment Testing qualified (S2M/T2M); aligns with MIL-DTL-55302. Visit samtec.com/set

*Teflon™ is a trademark of The Chemours Company FC, LLC used under license by Samtec.



Optional strain relief and variety of wiring options

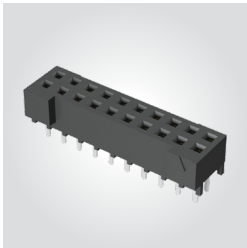
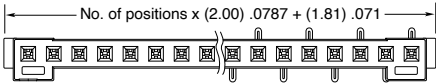
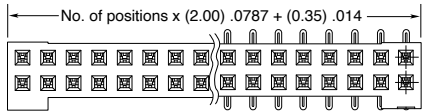
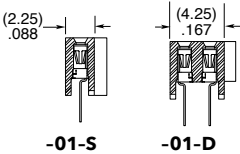
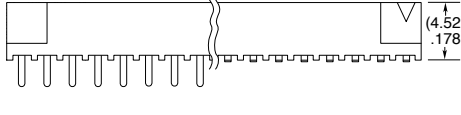
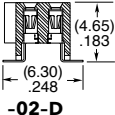
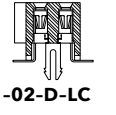


Components (ISD2/CC81) & tooling available: samtec.com/tooling

KEY SPECIFICATIONS (S2M/T2M)

STACK HEIGHTS	INSULATOR MATERIAL	CONTACT MATERIAL	PLATING	OPERATING TEMP RANGE	CURRENT RATING	VOLTAGE RATING	MAX. CYCLES	LEAD-FREE SOLDERABLE
6 & 7 mm	Black LCP	BeCu (S2M) Phosphor Bronze (T2M)	Au or Sn over 50 μ" (1.27 μm) Ni	-55 °C to +125 °C	2.6 A (2 pins powered)	350 VAC/ 495 VDC	100 with 10 μ" (0.25 μm) Au	Yes

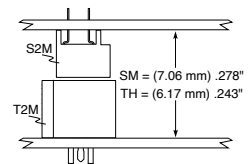
(2.00 mm) .0787" PITCH • HIGH-RELIABILITY INTERCONNECTS

SERIES	1	NO. OF POSITIONS	LEAD STYLE	PLATING OPTION	ROW OPTION	OPTIONS	PACKAGING
S2M Socket		(Per Row) 05, 07, 10, 15, 20 25, 30 (Available with -D row option only)	-01 = Through-hole -02 = Surface Mount	-F = Gold flash on contact, Matte Tin on tail -L = 10 μ" (0.25 μm) Gold on contact, Matte Tin on tail	-D = Double row -S = Single row	-K = (5.50 mm) .217" DIA Polyimide film Pick & Place Pad (-02 only) -LC = Locking Clip (Manual placement required) (-02 only) -DS = Screw Down (N/A with -LC) (mates with -T2M-DS)	Leave blank for tube packaging -TR = Tape & Reel (-02 only) -FR = Full Reel Tape & Reel (must order max. quantity per reel; contact Samtec for quantity breaks) (-02 only)
<p>S2M Board Mates: T2M</p> <p>Cable Mates: T2SD, T2SDT</p>        <p>View complete specifications at: samtec.com?S2M</p>							

-S-DS
PRELIMINARY

SERIES	1	NO. OF POSITIONS	01	PLATING OPTION	ROW OPTION	TAIL OPTION	OTHER OPTIONS	PACKAGING
T2M Header		(Per Row) 05, 07, 10, 15, 20 25, 30 (Available with -D row option only)		-L = 10 μ" (0.25 μm) Gold on contact, Matte Tin on tail	-D = Double row -S = Single row	-TH = Through-hole -RA = Right-angle -SM = Surface Mount	-WT = Weld Tab (S2SD & S2SDT, -SR/-DR required mate) -DS = Screw Down (N/A with -RA) (mates with -S2M-DS, S2SX/S2SXT -SS/-DS option) -K = (7.50 mm) .295" DIA Polyimide film Pick & Place Pad (-SM only)	Leave blank for tube packaging -TR = Tape & Reel (-SM only) -FR = Full Reel Tape & Reel (must order max. quantity per reel; contact Samtec for quantity breaks) (-SM only)
<div>-S-RA & S-DS PRELIMINARY</div> <div><div><div>T2M Board Mates: S2M</div><div>Cable Mates: S2SD, S2SDT, S2SS, S2SST</div></div><div></div><div></div><div></div><div><div>-S-RA-WT</div><div>-S-SM-WT</div><div>-S-TH-WT</div><div>-D-TH-WT</div><div>-D-SM-WT</div><div>-D-RA-WT</div></div></div>								

MATED HEIGHT



Note:
Some lengths, styles and options are non-standard, non-returnable.

View complete specifications at: samtec.com?T2M