

IP68 SEALED ETHERNET SOCKET

RPBE, RPCE SERIES

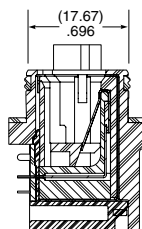
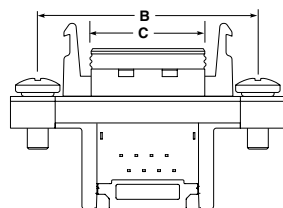
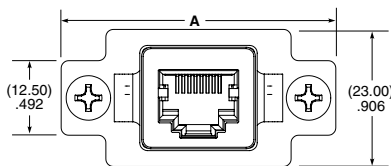


RPBE
Mates with:
RCE

RPBE	NO. OF PORTS	LEAD STYLE	PLATING
	-01, -02	-01 = Right-angle	-E = 50 μ" (1.27 μm) Gold on contact, Flash Gold on tail

SPECIFICATIONS

Insulator Material:
Black Liquid Crystal Polymer
Contact:
Phosphor Bronze
Operating Temp Range:
-40 °C to +75 °C
Seal:
Rubber
Screw:
Stainless Steel
Nut:
Stainless Steel
Sealing Washer:
Rubber



NO. OF PORTS	A	B	C
-01	(46.10) 1.815	(36.95) 1.455	(19.72) .776
-02	(67.10) 2.642	(57.95) 2.281	(40.72) 1.603

DUST CAPS

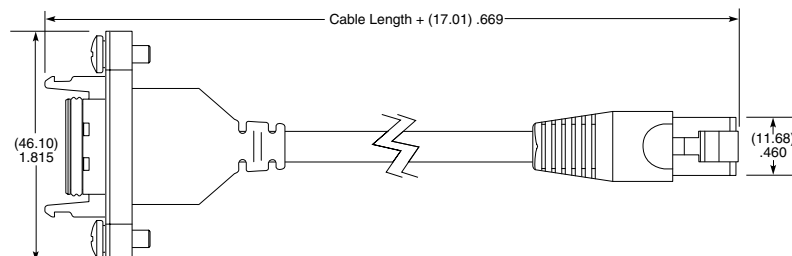
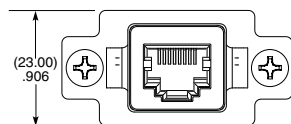
-01 = DCA-RPBE-01-01-P (Push-On/No Latch)
-01 = DCA-RPBE-01-01-L (Latching)
-02 = DCA-RPBE-02-01-L (Latching)

RPCE
Mates with:
RCE

RPCE	01	PLATING	CABLE LENGTH	END OPTION	C5E
------	----	---------	--------------	------------	-----

SPECIFICATIONS

Insulator Material:
Glass Filled Thermoplastic
Contact:
Phosphor Bronze
Shield:
Phosphor Bronze
Operating Temp Range:
-40 °C to +75 °C
Overmold:
Rite Flex 640F
Seal:
Rubber
Screw:
Stainless Steel
Nut:
Stainless Steel
Sealing Washer:
Rubber
Wire:
24 AWG



-E
= 50 μ" (1.27 μm)
Gold on contact,
Nickel on shell

-00.25
= (0.25 m) 9.84"

-00.50
= (0.50 m) 19.69"

Standard lengths

-D
= Double Ended

-BC
= Blunt Cut

Note:
Some lengths, styles and
options are non-standard,
non-returnable