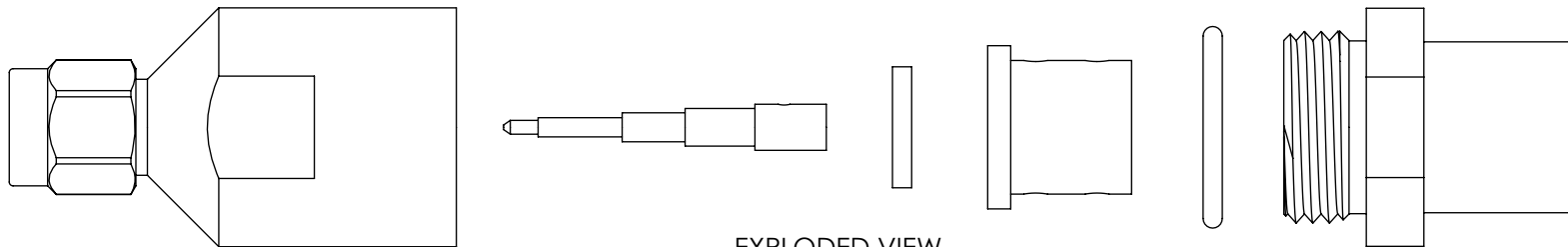
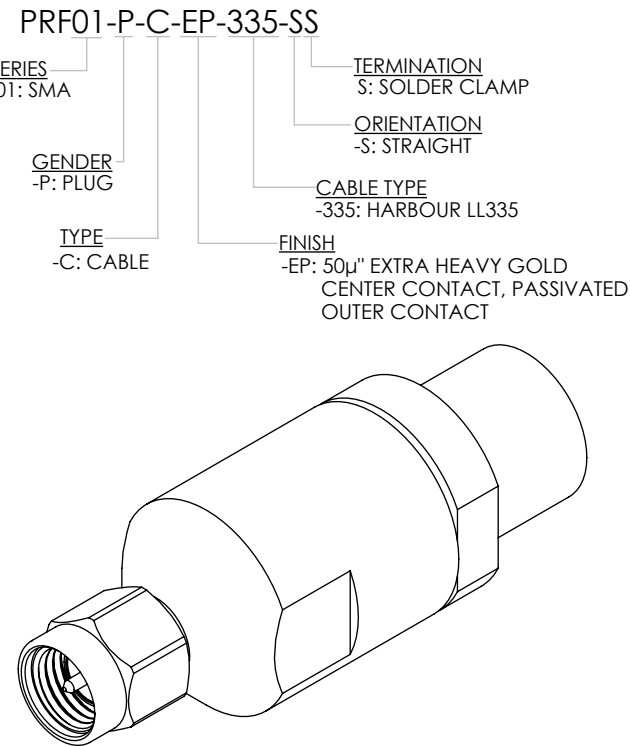
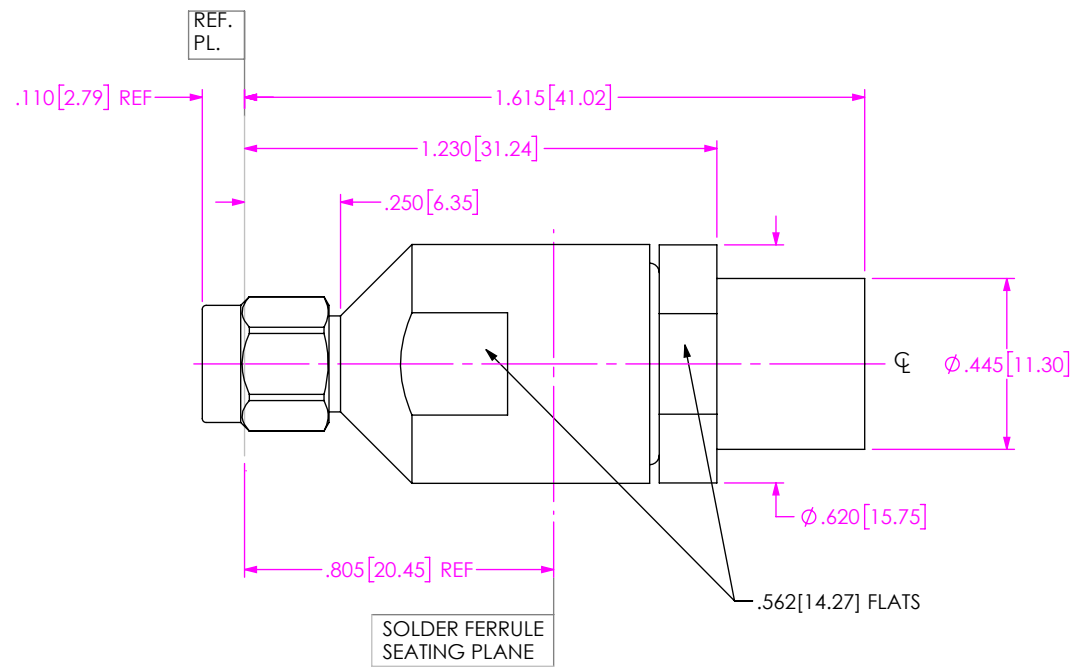


DO NOT  
SCALE FROM  
THIS PRINT

DESIGNED & DIMENSIONED  
IN INCHES[MILLIMETERS]




EXPLODED VIEW  
NOT TO SCALE  
(FOR CLARITY ONLY)

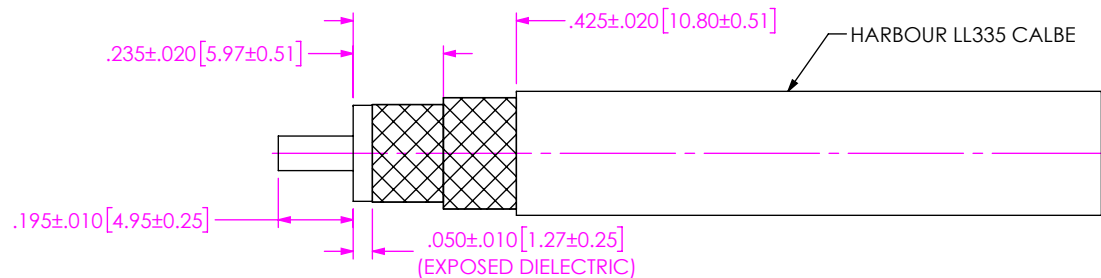
NOTES:

1. MATERIAL:  
BODY, CLAMP NUT, COUPLING NUT: STAINLESS STEEL  
CONTACT, LOCK RING: BERYLLIUM COPPER  
SOLDER FERRULE: BRASS ALLOY  
INSULATOR, BEAD: PTFE  
O-RING, GASKET: SILICONE RUBBER
2. FINISH:  
BODY, CLAMP NUT, COUPLING NUT: PASSIVATED  
CONTACT, SOLDER FERRULE: 50μ" MIN. GOLD OVER 50μ" MIN. NICKEL PLATE
3. PERFORMANCE:  
IMPEDANCE: 50 Ω  
FREQUENCY: DC TO 18 GHz  
VSWR: 1.14:1 MAXIMUM  
INSERTION LOSS: 0.03 x √f(GHz)  
DWV: 2000 Vrms
4. PCI P/N: 3167

F:\DWG\MISC\MKTG\PRF01-P-C-EP-335-SS-MKT.SLDDRW

UNLESS OTHERWISE SPECIFIED, DIMENSIONS ARE IN INCHES. TOLERANCES ARE: DECIMALS                      ANGLES .XX: ±.01[0.3]                      1° .XXX: ±.005[0.13] .XXXX: ±.0005[0.013]	<p>PROPRIETARY NOTE</p> <p>THIS DOCUMENT CONTAINS CONFIDENTIAL AND PROPRIETARY INFORMATION AND ALL DESIGN, MANUFACTURING, REPRODUCTION, USE, PATENT RIGHTS AND SALES RIGHTS ARE EXPRESSLY RESERVED BY SAMTEC, INC. THIS DOCUMENT SHALL NOT BE DISCLOSED, IN WHOLE OR PART, TO ANY UNAUTHORIZED PERSON OR ENTITY NOR REPRODUCED, TRANSFERRED OR INCORPORATED IN ANY OTHER PROJECT IN ANY MANNER WITHOUT THE EXPRESS WRITTEN CONSENT OF SAMTEC, INC.</p>	 520 PARK EAST BLVD, NEW ALBANY, IN 47150 PHONE: 812-944-6733      FAX: 812-948-5047 e-Mail: info@SAMTEC.com      code 55322
		DESCRIPTION: SMA PLUG, SOLDER CLAMP FOR HARBOUR LL335 CABLE DWG. NO. PRF01-P-C-EP-335-SS BY: JERRY SU      4/28/2019      SHEET 1 OF 2

1A. TRIM CABLE AS SHOWN.

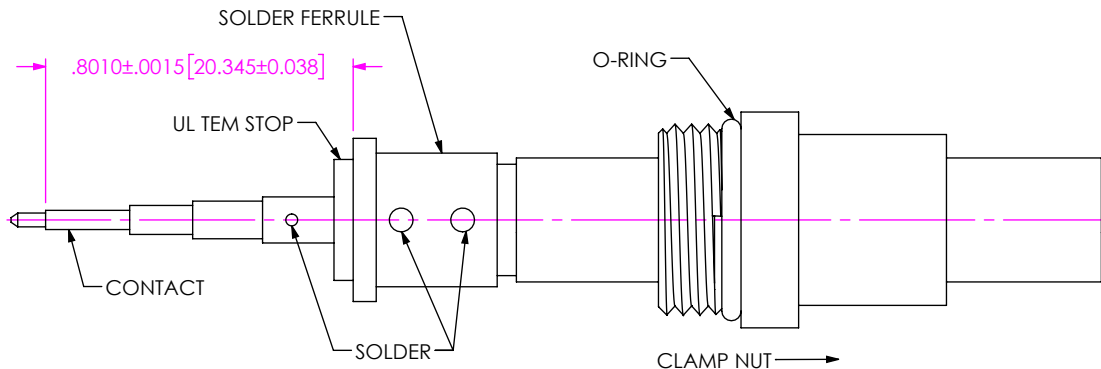


IN-PROCESS VIEW 1

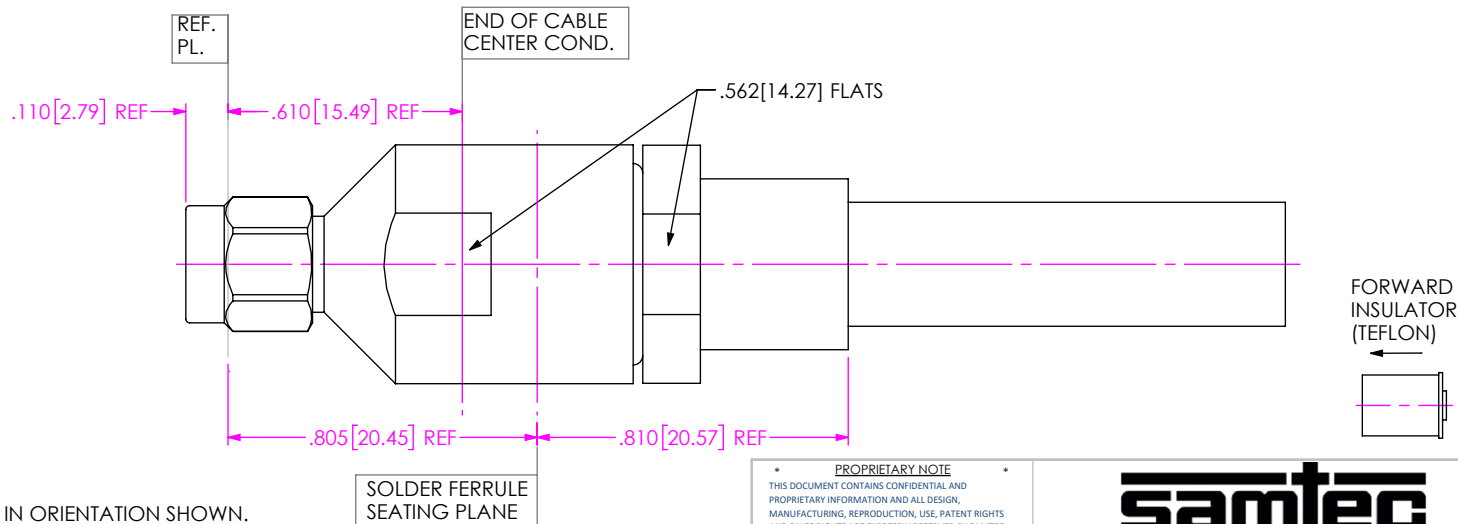
2A. SLIDE CLAMP NUT OVER CABLE AS SHOWN.

2B. INSERT CABLE INTO SOLDER FERRULE UNTIL CABLE DIELECTRIC IS FLUSH WITH FACE OF FERRULE. THEN SOLDER BOTH CABLE BRAIDS WHERE SHOWN.

2C. SLIDE DIELECTRIC STOP OVER CABLE CENTER CONDUCTOR AND SOLDER CONTACT FLUSH AGAINST STOP TO DIMENSION SHOWN.



IN-PROCESS VIEW 2



3A. INSERT FORWARD INSULATOR INTO CONNECTOR IN ORIENTATION SHOWN.

3B. INSERT CABLE/CONTACT SUB-ASSEMBLY INTO CONNECTOR UNTIL SEATED AND TIGHTEN CLAMP NUT TO 34-35 IN-LBS.

IN-PROCESS VIEW 3

**PROPRIETARY NOTE**  
THIS DOCUMENT CONTAINS CONFIDENTIAL AND PROPRIETARY INFORMATION AND ALL DESIGN, MANUFACTURING, REPRODUCTION, USE, PATENT RIGHTS AND SALES RIGHTS ARE EXPRESSLY RESERVED BY SAMTEC, INC. THIS DOCUMENT SHALL NOT BE DISCLOSED, IN WHOLE OR PART, TO ANY UNAUTHORIZED PERSON OR ENTITY NOR REPRODUCED, TRANSFERRED OR INCORPORATED IN ANY OTHER PROJECT IN ANY MANNER WITHOUT THE EXPRESS WRITTEN CONSENT OF SAMTEC, INC.

DO NOT SCALE DRAWING

SHEET SCALE: 2:1

**samtec**

520 PARK EAST BLVD, NEW ALBANY, IN 47150  
PHONE: 812-944-6733 FAX: 812-948-5047  
e-Mail: info@SAMTEC.com code 55322

DESCRIPTION: SMA PLUG, SOLDER CLAMP FOR HARBOUR LL335 CABLE

DWG. NO. PRF01-P-C-EP-335-SS

BY: JERRY SU 4/28/2019 SHEET 2 OF 2