

**(1.00 mm) .0394" PITCH • PCI EXPRESS® 4.0 SOCKET**

PCIE	-	G4	-	NUMBER OF LANES	-	01	-	PLATING OPTION	-	DV	-	OPTION 1	-	OPTION 2	-	PACKAGING
------	---	----	---	-----------------	---	----	---	----------------	---	----	---	----------	---	----------	---	-----------

**-01, -04,  
-08, -16**

**-F**  
= Gold flash  
on contact,  
Matte Tin  
on tail

**-A**  
= Alignment Pin  
(Not available  
with -WT)

**-WT**  
= Weld Tab  
(Not available  
with -A)

**-K**  
= (7.00 mm)  
.275" DIA  
Polyimide  
Pick & Place  
Pad

(For -16 lanes  
only leave blank for  
Tray Packaging)

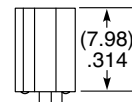
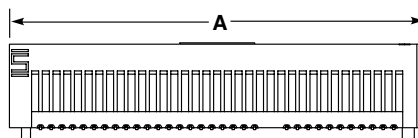
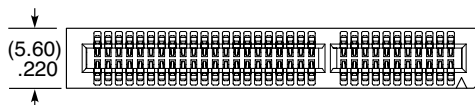
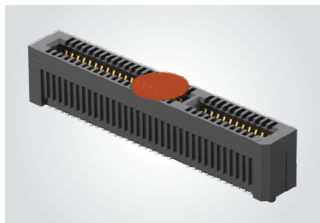
**-TR**  
= Tape & Reel  
("X"R required  
with -01, -04,  
-08 lanes)

**-FR**  
= Full Reel  
Tape & Reel  
(must order max.  
quantity per reel;  
contact Samtec for  
quantity breaks)  
("X"R required  
with -01, -04,  
-08 lanes)

**PCIE-G4**

**Card Mates:**  
(1.60 mm)  
.062" card

**Cable Mates:**  
PCIEC-G4



NUMBER OF LANES	A
-01	(24.80) .976
-04	(38.80) 1.528
-08	(55.80) 2.197
-16	(88.80) 3.496

View complete specifications at: [samtec.com?PCIE-G4](http://samtec.com?PCIE-G4)

**(1.00 mm) .0394" PITCH • PCI EXPRESS® 5.0/6.0 SOCKET**

PCIE	-	G5	-	NUMBER OF LANES	-	01	-	PLATING OPTION	-	TYPE	-	OPTION	-	PACKAGING
------	---	----	---	-----------------	---	----	---	----------------	---	------	---	--------	---	-----------

**-01, -04,  
-08, -16**

**-F**  
= Gold flash on contact,  
Matte Tin on tail

**-DP-A**  
= Vertical

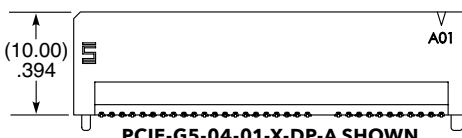
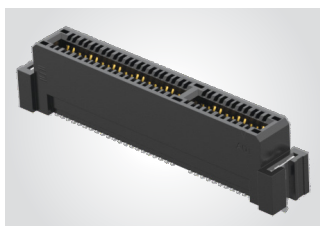
**-WT**  
= Weld Tab

(For -16 lanes  
only leave blank for  
Tray Packaging)

**PCIE-G5**

**Card Mates:**  
(1.60 mm)  
.062" card

**Cable Mates:**  
PCIEC-G5



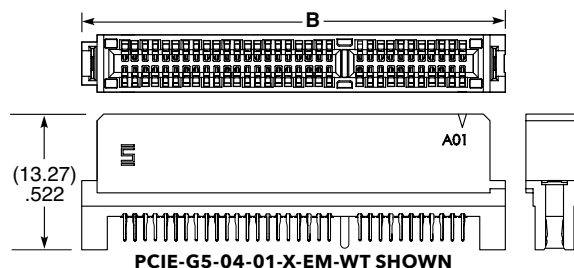
PCIE-G5-04-01-X-DP-A SHOWN

**-EM**  
= Edge  
Mount

**-TR**  
= Tape & Reel  
("X"R required  
with -01, -04,  
-08 lanes)

**-FR**  
= Full Reel  
Tape & Reel  
(must order max.  
quantity per reel;  
contact Samtec for  
quantity breaks)  
("X"R required  
with -01, -04,  
-08 lanes)

NUMBER OF LANES	A	B
-01	(24.40) .961	(27.40) 1.079
-04	(38.40) 1.512	(41.40) 1.630
-08	(55.40) 2.181	(58.40) 2.299
-16	(88.40) 3.480	(91.40) 3.598



PCIE-G5-04-01-X-EM-WT SHOWN

PCI-SIG®, PCI Express® and the PCIe® design marks are registered trademarks and/or service marks of PCI-SIG.

**Note:**  
Some lengths, styles and options are non-standard, non-returnable.

View complete specifications at: [samtec.com?PCIE-G5](http://samtec.com?PCIE-G5)