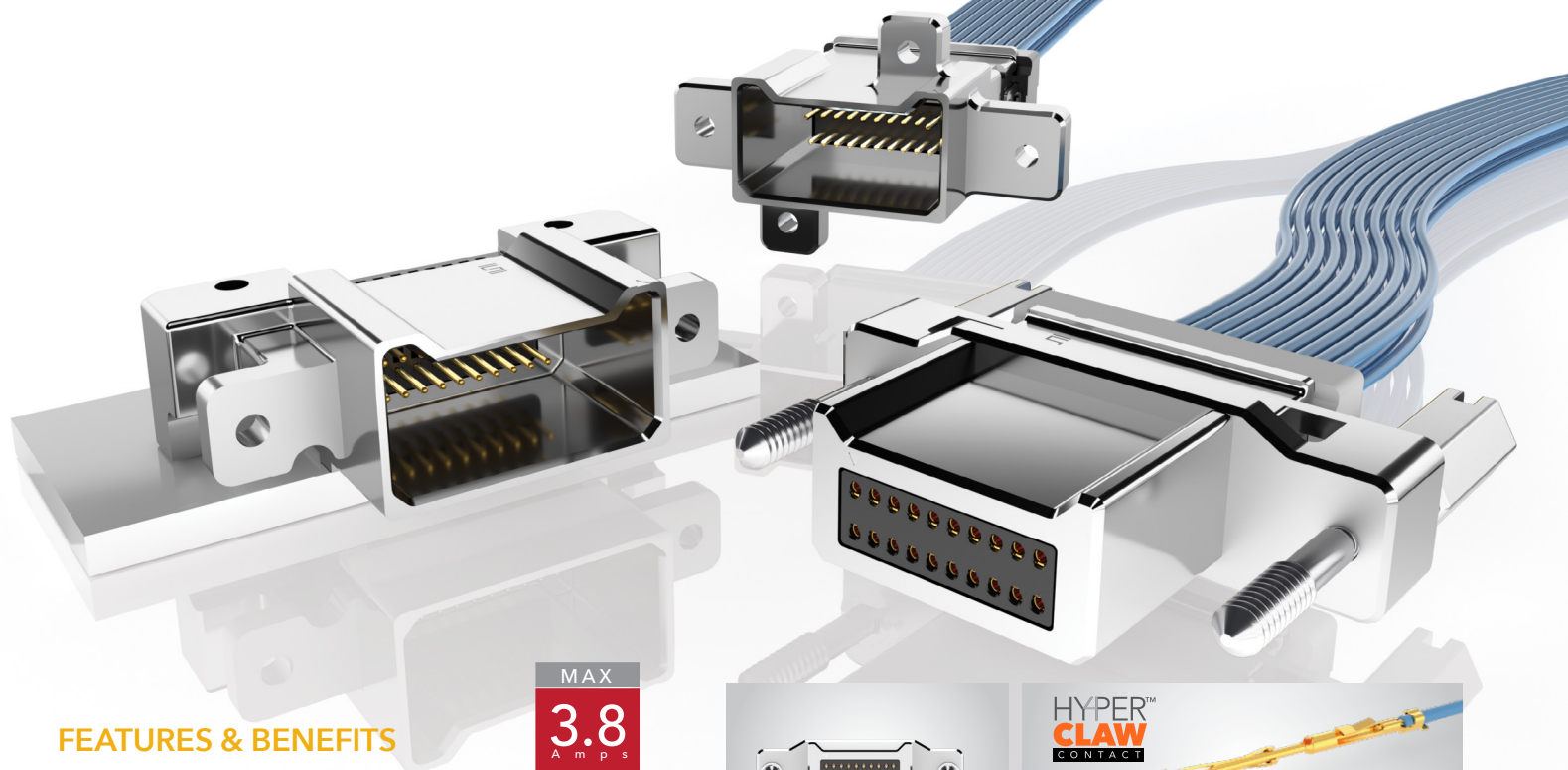
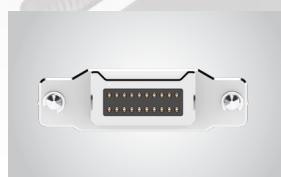


ULTRA RUGGED I/O SYSTEMS



FEATURES & BENEFITS

- Small form factor
- Four points of contact for a reliable connection and high mating cycles
- Up to 40 positions per row
- Cable-to-cable & cable-to-board solutions
- EMI shielding limits signal degradation and optimizes performance
- Through-hole or surface mount
- 28 & 30 AWG cable
- Availability of contacts (high-speed, RF, power) in 1 to 5 block configurations (See page 231)



Shown actual size
at 20 total positions



Hyper Claw™ Hyperboloid-type contact
for extreme high mating cycles



Extreme density with up to 1,450 total I/Os in a 1RU panel
(29 cables at 50 total I/Os each)

KEY SPECIFICATIONS

SERIES	INSULATOR MATERIAL	CONTACT MATERIAL	SHIELD MATERIAL	PLATING	OPERATING TEMP RANGE	CURRENT RATING	VOLTAGE RATING
P1PD(X), B1SD(X), P1M	Liquid Crystal Polymer	Beryllium Copper	Zinc Alloy	Au over 50 μ" (1.27 μm) Ni	-10 °C to +80 °C (PVC) -40 °C to +125 °C (*Teflon™ Fluoropolymer)	3.8 A per pin (2 pins powered)	200 VAC/ 282 VDC
B1SM		Copper Alloy		50 μ" (1.27 μm) Au center contact	Testing Now!	Testing Now!	Testing Now!
P1SM				30 μ" (0.76 μm) Au center contact			

*Teflon™ is a trademark of The Chemours Company FC, LLC used under license by Samtec.

(1.00 mm) .0394" PITCH • I/O BOARD MOUNT

P1M	NO. OF POSITIONS	LEAD STYLE	PLATING	D	RA	PIN LENGTH	"X"R
-----	------------------	------------	---------	---	----	------------	------

**-10, -15,
-25, -30**
(Per Row)

-01
= Surface Mount

-02
= Through-hole
(1.57 mm PCB)

-03
= Through-hole
(2.36 mm PCB)

-S
= 30 μ " (0.76 μ m)
Gold on contact area,
Matte Tin on tail

-STL
= 30 μ " (0.76 μ m)
Gold on contact area,
Tin/Lead on tail
(-01 lead style only)

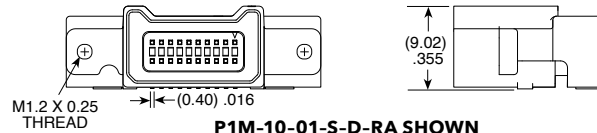
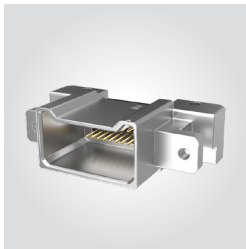
(Leave blank for
standard)

-H
= Hot Swap

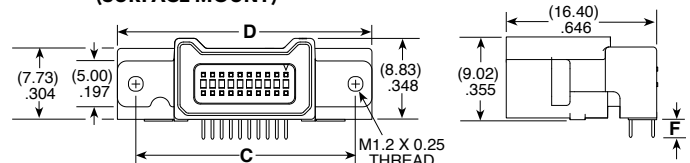
-TR
= Tape & Reel

-FR
= Full Reel
Tape & Reel
(must order max.
quantity per reel;
contact Samtec for
quantity breaks)

P1M
Cable Mates:
B1SD, B1SDT



**P1M-10-01-S-D-RA SHOWN
(SURFACE MOUNT)**



NO. OF POSITIONS	A	B	C	D	E
-10	(9.00) .354	(15.39) .606	(23.75) .935	(27.75) 1.093	(18.80) .740
-15	(14.00) .551	(20.39) .803	(28.75) 1.132	(32.75) 1.289	(23.80) .937
-25	(24.00) .945	(30.39) 1.196	(38.75) 1.526	(42.75) 1.683	(33.80) 1.331
-30	(29.00) 1.142	(35.39) 1.393	(43.75) 1.722	(47.75) 1.880	(38.80) 1.528

Note:
Some lengths, styles and
options are non-standard,
non-returnable.

View complete specifications at: samtec.com?P1M

LEAD STYLE	F
-02	(1.98) .078
-03	(2.82) .111

**P1M-10-02-S-D-RA SHOWN
(THROUGH-HOLE)**

P1M	NO. OF POSITIONS	LEAD STYLE	PLATING	DV	PIN LENGTH	PICK & PLACE OPTION	"X"R
-----	------------------	------------	---------	----	------------	---------------------	------

**-10, -15, -25,
-30**
(Per Row)

-01
= Surface Mount

-02
= Through-hole
(1.57 mm PCB)

-03
= Through-hole
(2.36 mm PCB)

-S
= 30 μ " (0.76 μ m)
Gold on contact area,
Matte Tin on tail

-STL
= 30 μ " (0.76 μ m)
Gold on contact area,
Tin/Lead on tail

(Leave blank for
standard)

-H
= Hot Swap

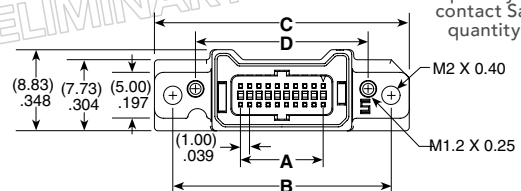
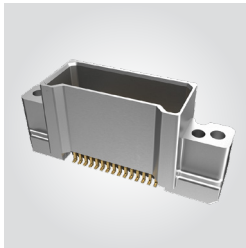
(Leave blank for
no pad)

-K
= (8.25 mm) .315"
DIA Polyimide
Film Pick &
Place Pad

-TR
= Tape & Reel

-FR
= Full Reel
Tape & Reel
(must order max.
quantity per reel;
contact Samtec for
quantity breaks)

P1M
Cable Mates:
B1SD, B1SDT



P1M-10-01-S-DV SHOWN

NO. OF POSITIONS	A	B	C	D	E
-10	(9.00) .354	(23.75) .935	(27.75) 1.093	(18.80) .740	(15.22) .599
-15	(14.00) .551	(28.75) 1.132	(32.75) 1.289	(23.80) .937	(20.22) .796
-25	(24.00) .945	(38.75) 1.526	(42.75) 1.683	(33.80) 1.331	(30.22) 1.190
-30	(29.00) 1.142	(43.75) 1.722	(47.75) 1.880	(38.80) 1.528	(35.22) 1.387

Note:
Some lengths, styles and
options are non-standard,
non-returnable.

View complete specifications at: samtec.com?P1M