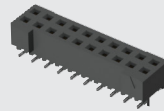


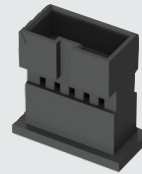
**TIGER  
EYE**  
DISCRETE

(2.00 mm) .0787"



S2M-110-02-L-D

ITD2-05-D



T1M82-L-2426-01-L



ITD2, T1M82, S2M SERIES

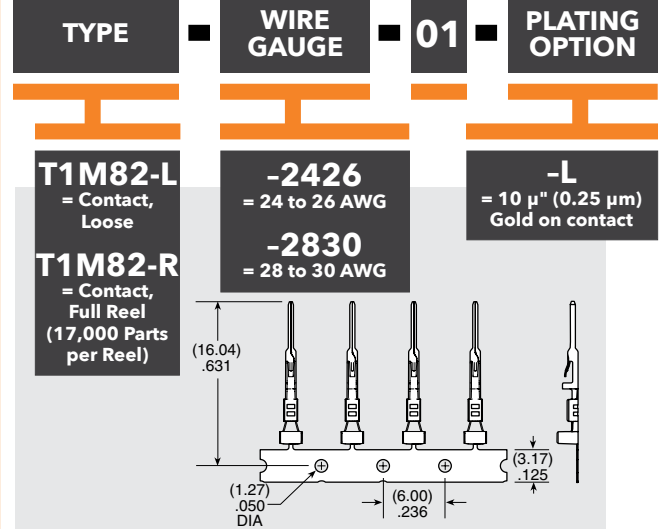
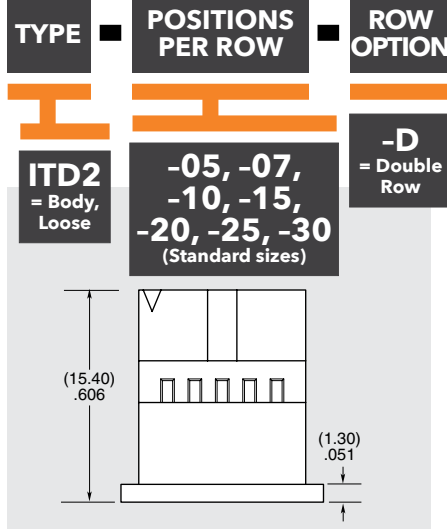
# WIRE TO BOARD COMPONENTS & TOOLING

## SPECIFICATIONS

For complete specifications see [www.samtec.com?ITD2](http://www.samtec.com?ITD2) or [www.samtec.com?T1M82](http://www.samtec.com?T1M82)

## TOOLING

- Hand Tool:  
CAT-HT-281-2430-13
- Mini Applicator  
(24-26 AWG):  
CAT-MC-182-2426-XX-01
- Mini Applicator  
(28-30 AWG):  
CAT-MC-182-2830-XX-01



Mates with:  
T2SD

## SPECIFICATIONS

For complete specifications and recommended PCB layouts see [www.samtec.com?S2M](http://www.samtec.com?S2M)

**Insulator Material:**  
Black Liquid Crystal Polymer  
**Contact Material:**  
BeCu

### Plating:

Sn or Au over  
50 μ" (1.27 μm) Ni  
**Operating Temp Range:**  
-55 °C to +125 °C

### Current Rating:

2.6 A per pin  
(2 pins powered)

### Voltage Rating:

350 VAC/495 VDC

### Insertion Depth:

(3.05 mm) .120" to

(3.25 mm) .128"

### Max Cycles:

100 with 10 μ" (0.25 μm) Au

## PROCESSING

### Lead-Free Solderable:

Yes

### SMT Lead Coplanarity:

(0.10 mm) .004" max

