

SMPM TO 65 GHz

GPPC	GENDER	1	NO. OF POSITIONS	PLATING	ORIENTATION	TERMINATION	OPTION	SCREW SIZE
	-PF = Plug Full Detent -PS = Plug Smooth Bore -PC = Catcher's Mitt (-ST-SL & -RA-SM only)		-02, -04, -06, -08, -10 (Per Row)	-EG = 50 μ " (1.27 μ m) heavy Gold center contact, 10 μ " (0.25 μ m) extra Gold outer body (-EM-1N & -RA-SM only) -HG = 30 μ " (0.76 μ m) Gold center contact, 10 μ " (0.25 μ m) Gold outer body (-ST-SL only)	-ST = Straight -RA = Right-angle (-SM only)	-SM = Surface Mount (Right-angle only) -EM-1N = Edge Mount -SL = Stub Launch	Leave blank for no screws -S = Screw (not available with -SM)	-ST-SL only; Leave blank for non screw option -1 = (2.11 mm) .083" to (2.62 mm) .103" PCB thickness -2 = (1.24 mm) .049" to (1.75 mm) .069" PCB thickness -3 = (.38 mm) .015" to (.89 mm) .035" PCB Thickness

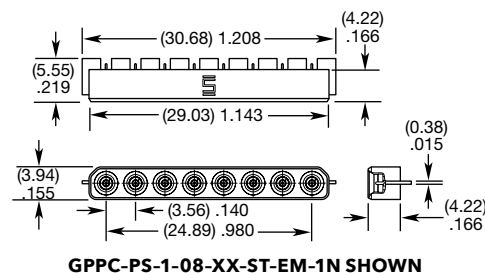
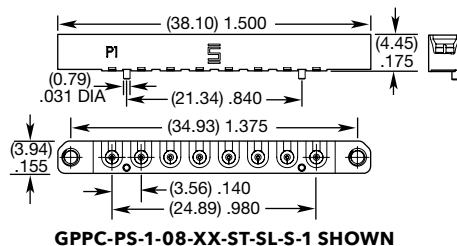
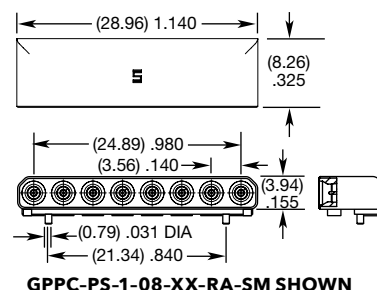
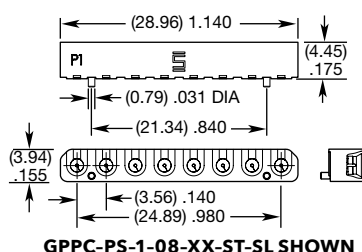
SMPM

Ganged Block:

GPPC-ST-SL, GPPC-RA-SM, GPPC-EM

Mates With:

GC47, GC86



Notes:

Some sizes, styles and options are non-standard, non-returnable.

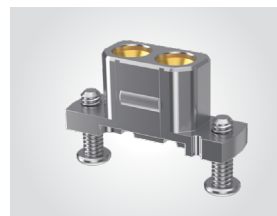
DUAL PORT SOLDERLESS COMPRESSION MOUNT

SMPM Ganged Block:

GPPC-CMM

Mates With:

GC47, GC86, PRFIA



GPPC	GENDER	1	2	PLATING	ORIENTATION	TERMINATION	PACKAGING
	-PF = Plug Full Detent -PS = Plug Smooth Bore			-EP = 50 μ " (1.27 μ m) heavy Gold center contact, Passivated outer body	-ST = Straight	-CMM = Compression Mount	Leave blank for individually bagged -B = Full Tray (Multiples of 100 required)

NO. OF POSITIONS	A	B	C
-02	(7.62) .300	(10.92) .430	(3.56) .140

GPPC-PX-1-2-EP-ST-CMM-X SHOWN