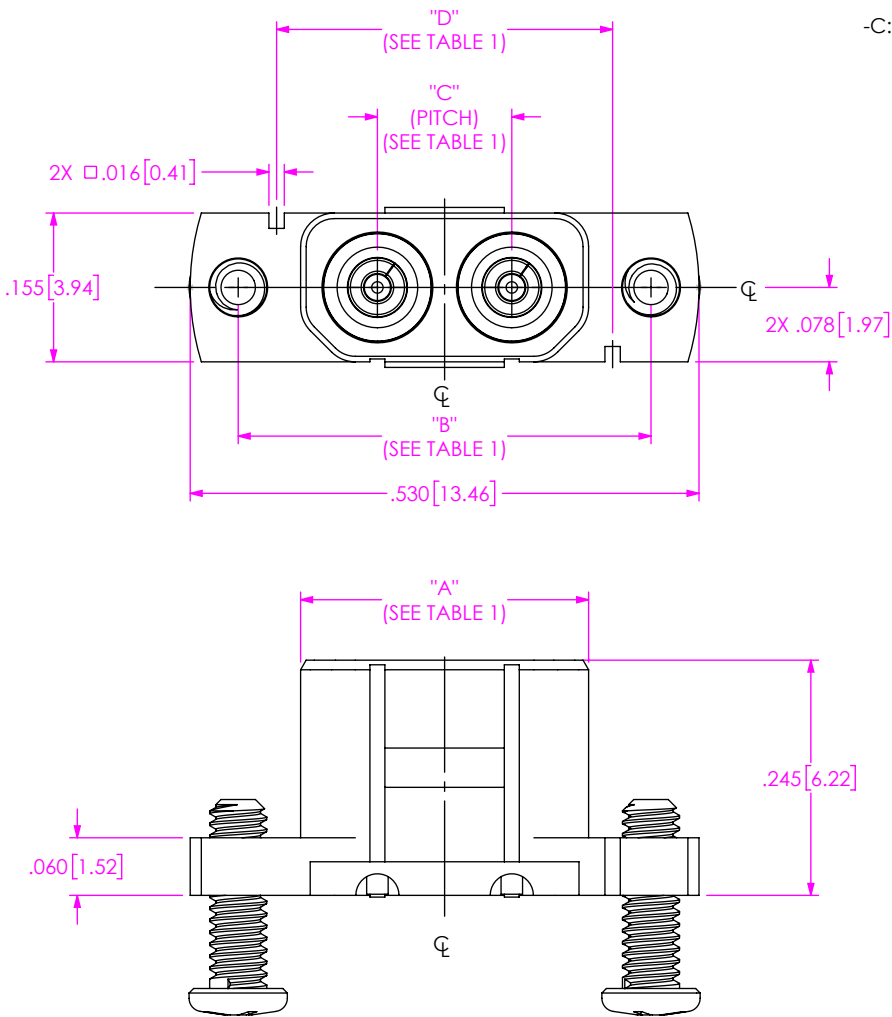


DESIGNED AND DIMENSIONED IN INCHES[MILLIMETERS]
ALL DIMENSIONS REFERENCE EXCEPT AS SHOWN

GPPC-PX-1-2-EP-ST-CMM-X

DO NOT
SCALE FROM
THIS PRINT



TYPE
-P: PC

SERIES
-C: CABLE BLOCK MATE

GENDER
-PF: PLUG FULL DETENT
-PS: PLUG SMOOTH BORE

No OF ROWS
-1

No OF POSITIONS (PER ROW)
-2

PACKAGING
-BLANK: INDIVIDUALLY BAGGED
-B: FULL TRAY (QTY >= 100)

TERMINATION
-CMM: COMPRESSION MOUNT

ORIENTATION
-ST: STRAIGHT

FINISH
-EP: 50μ" HEAVY GOLD
CENTER CONTACT,
PASSIVATED OUTER BODY

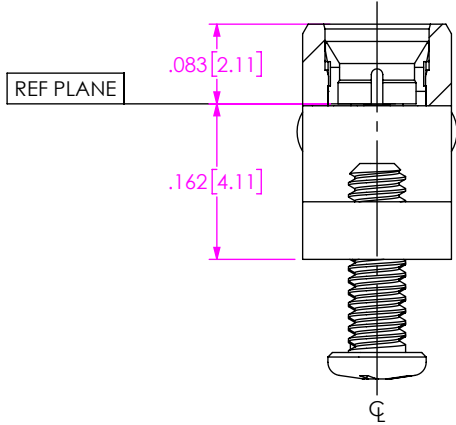
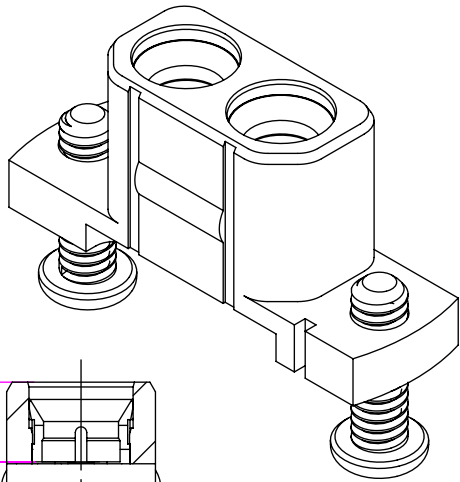


FIG 1

(GPPC-PF-1-2-EP-ST-CMM-X SHOWN)

- NOTES:
1. MATERIAL:
BEAD: ULTEM 1000.
BODY: STAINLESS STEEL.
BUSHING, CONTACT: BERYLLIUM COPPER.
 2. FINISH:
BODY: PASSIVATE

BUSHING, CONTACT: GOLD OVER NICKEL PLATE,
50-100 μIN MIN GOLD OVER 50-100 μIN MIN NICKEL.
 3. RECOMMENDED MOUNTING TORQUE 0.9-1.3 INCH-POUNDS.

TABLE 1				
No OF POSITIONS	"A"	"B"	"C"	"D"
-02	0.300 [7.62]	0.430 [10.92]	0.140 [3.56]	0.350 [8.89]

PROPRIETARY NOTE
THIS DOCUMENT CONTAINS CONFIDENTIAL AND
PROPRIETARY INFORMATION AND ALL DESIGN,
MANUFACTURING, REPRODUCTION, USE, PATENT RIGHTS
AND SALES RIGHTS ARE EXPRESSLY RESERVED BY SAMTEC,
INC. THIS DOCUMENT SHALL NOT BE DISCLOSED, IN WHOLE
OR PART, TO ANY UNAUTHORIZED PERSON OR ENTITY NOR
REPRODUCED, TRANSFERRED OR INCORPORATED IN ANY
OTHER PROJECT IN ANY MANNER WITHOUT THE EXPRESS
WRITTEN CONSENT OF SAMTEC, INC.

DO NOT SCALE DRAWING
SHEET SCALE: 5:1

MATERIAL:

BODY: STAINLESS STEEL
BUSHING, CONTACT: BERYLLIUM COPPER
BEAD: ULTEM 1000

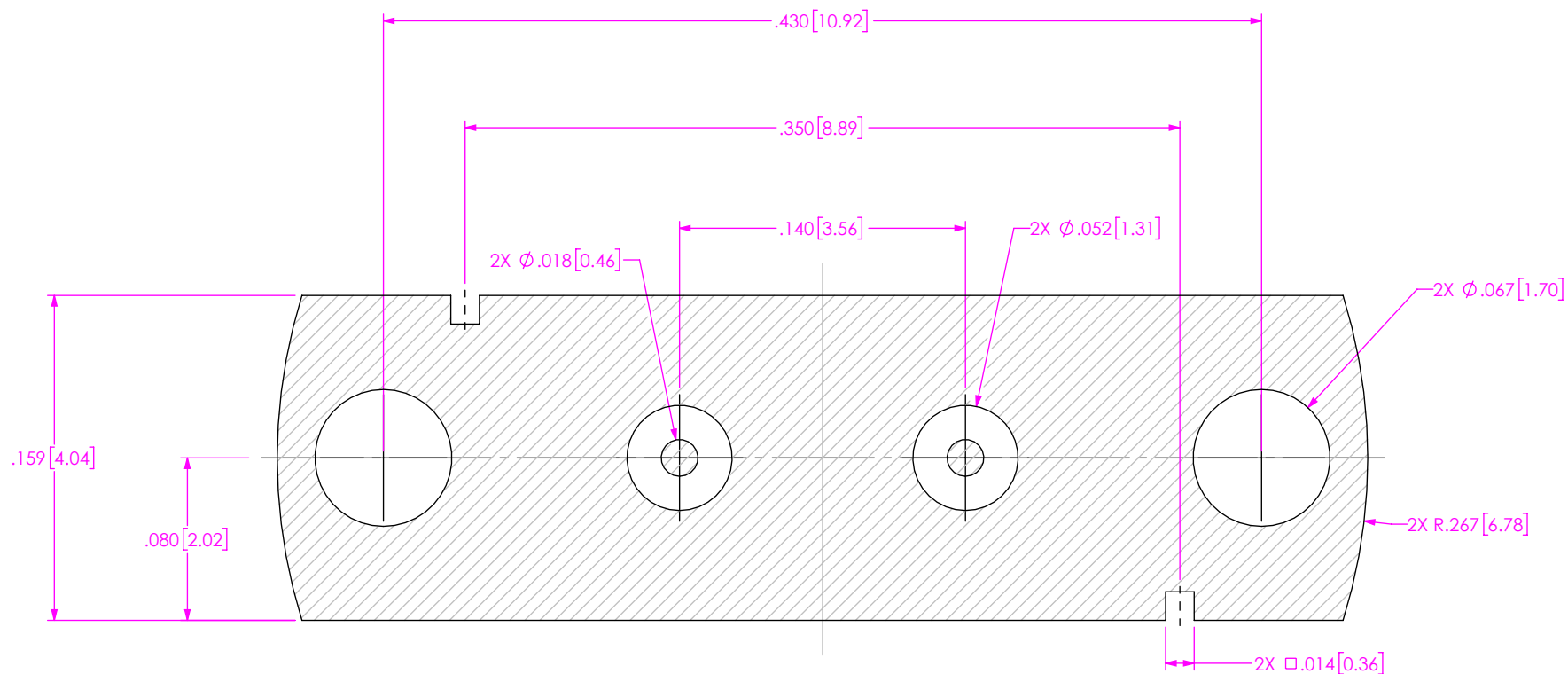
samtec

520 PARK EAST BLVD, NEW ALBANY, IN 47150
PHONE: 812-944-6733 FAX: 812-948-5047
e-Mail: info@SAMTEC.com code 55322

DESCRIPTION:
RECEPTACLE, SMPM, COMPRESSION MOUNT

DWG. NO.
GPPC-PX-1-2-EP-ST-CMM-X

BY: MATT M. 01/24/2022 SHEET 1 OF 3



RECOMMENDED FOOTPRINT
(STRIPLINE SHOWN)

PROPRIETARY NOTE
THIS DOCUMENT CONTAINS CONFIDENTIAL AND PROPRIETARY INFORMATION AND ALL DESIGN, MANUFACTURING, REPRODUCTION, USE, PATENT RIGHTS AND SALES RIGHTS ARE EXPRESSLY RESERVED BY SAMTEC, INC. THIS DOCUMENT SHALL NOT BE DISCLOSED, IN WHOLE OR PART, TO ANY UNAUTHORIZED PERSON OR ENTITY NOR REPRODUCED, TRANSFERRED OR INCORPORATED IN ANY OTHER PROJECT IN ANY MANNER WITHOUT THE EXPRESS WRITTEN CONSENT OF SAMTEC, INC.

DO NOT SCALE DRAWING

SHEET SCALE: 12:1

samtec

520 PARK EAST BLVD, NEW ALBANY, IN 47150
PHONE: 812-944-6733 FAX: 812-948-5047
e-Mail: info@SAMTEC.com code 55322

DESCRIPTION:
RECEPTACLE, SMPM, COMPRESSION MOUNT

DWG. NO.
GPPC-PX-1-2-EP-ST-CMM-X

BY: MATT M. 01/24/2022 SHEET 3 OF 3