

EXTREME HIGH-POWER 60 A SYSTEMS

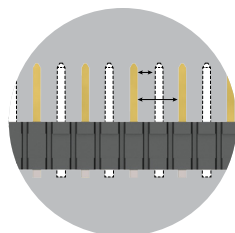
FEATURES & BENEFITS

- Up to 60 A per power blade (2 blades powered)
- Split Power Option: 30 A/30 A for a total of 60 A
- Low 10 mm profile (right-angle) for enhanced system airflow
- Power only, or power/signal combinations
- 3 or 5 signal rows in the same form factor
- AC power, DC power, power/signal combinations and split power options available
- Coplanar and perpendicular solutions supporting mid-board or backplane applications
- Modules can be configured to accommodate most any design
- Rugged guide posts are standard; top design for board space savings
- Press-fit (ET60S only) and hot swap (ET60T only) options available

MAX
60
A m p s

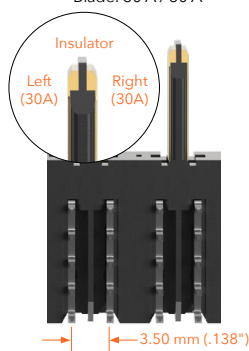
Standard Creepage*	3.02 mm
Standard Clearance*	1.87 mm

*Selectively loading contacts achieves customer specific creepage and clearance requirements.
Contact asp@samtec.com



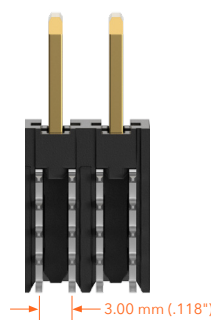
SPLIT POWER

8 mm (.315") pitch
Blade: 30 A / 30 A



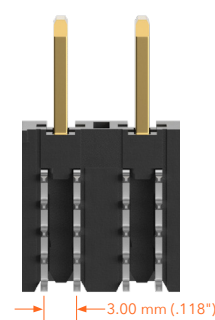
DC POWER

5.50 mm (.217") pitch
Blade: 60 A



AC POWER

7.50 mm (.295") pitch
Blade: 60 A



BOTTOM VIEW

KEY SPECIFICATIONS (ET60T/ET60S)

	PITCH	INSULATOR MATERIAL	TERMINAL MATERIAL	PLATING	OPERATING TEMP RANGE	CURRENT RATING	VOLTAGE RATING	MATING CYCLES	LEAD-FREE SOLDERABLE
Power	(5.50 mm) .217" (DC) (7.50 mm) .295" (AC) (8.00 mm) .315" (SP)	Black LCP	Signal: Phosphor Bronze Power: Copper Alloy	Au or Sn over 50 μ" (1.27 μm) Ni	-40 °C to +105 °C	60 A (Power Pin) 30 A/30 A (Split Power) 3.3 A (Signal Pin)	300 VAC/ 424 VDC	500	Yes
Signal	(2.00 mm) .097" (5 row) (2.54 mm) .100" (3 row)								

Notes:

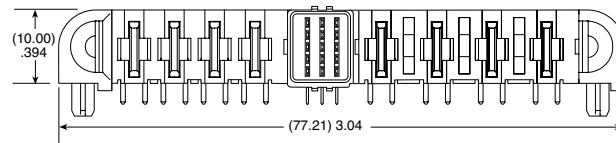
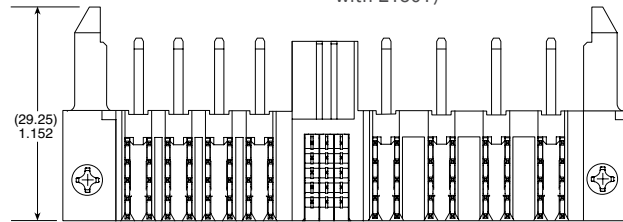
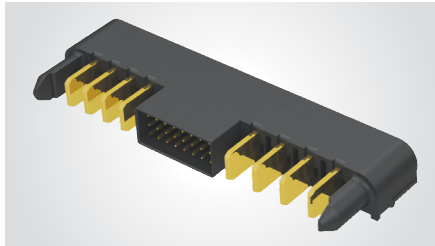
Some lengths, styles and options are non-standard, non-returnable.

*EXTreme Ten60Power™ is a trademark of Molex Incorporated and is dual sourced by Molex®

60 A SIGNAL/POWER COMBO SYSTEM

SERIES	POWER OPTION (R)	ROWS	SIGNAL POS. PER ROW	POWER OPTION (L)	PLATING	TAIL	GUIDE POST	OPTION
ET60T Terminal	-AXX = AC Power Positions (02 - 06)	-0 = No Signal	-00 = No Signal	-AXX = AC Power Positions (02 - 06)	-L = 10 μ " (0.25 μ m) Gold on contact, Matte Tin on tail (Not available for 5 rows)	-R1 = Right-angle Through-hole (Use with (1.60 mm) .062" thick card)	(Required callout)	(Leave blank for no hot swap)
ET60S Socket	-DXX = DC Power Positions (02 - 10)	-3	-08 = 3 Row only	-DXX = DC Power Positions (02 - 10)		-VP = Vertical Press-fit (Not available with ET60T)	-S = Side Guide Post	-H = Hot Swap (ET60T only)
	-SXX = Split Power (01 - 03)	-5	-01, -02, -03, -04, -05, -06, -07, -08 = 5 Row only	-SXX = Split Power (01 - 03)		-V1 = Vertical Through-hole (Use with (1.60 mm) .062" thick card) (-0 and -3 Row only) (Not available with ET60T)	-T = Top Guide Post (Not available with -SXX)	
	-000 = No Power			-000 = No Power				

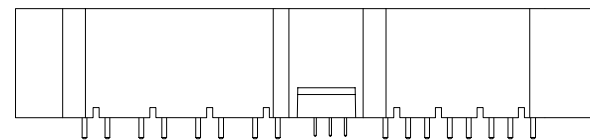
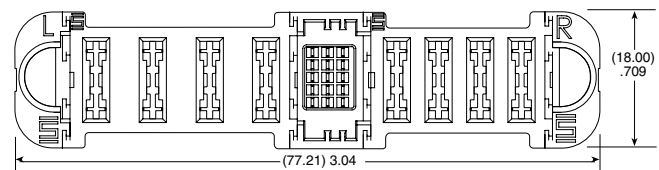
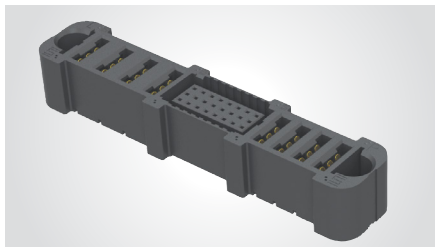
ET60T
Board Mates:
ET60S



ET60T-D04-5-03-A04-X-R1-S SHOWN

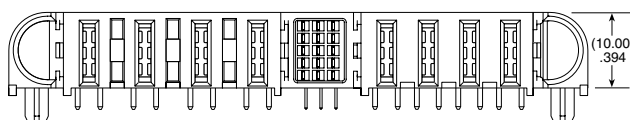
View complete specifications at: samtec.com?ET60T

ET60S
Board Mates:
ET60T



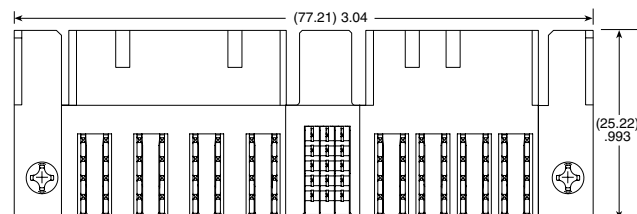
VERTICAL

ET60S-D04-5-03-A04-X-VP-S SHOWN



RIGHT-ANGLE

ET60S-D04-5-03-A04-X-R1-S SHOWN



View complete specifications at: samtec.com?ET60S