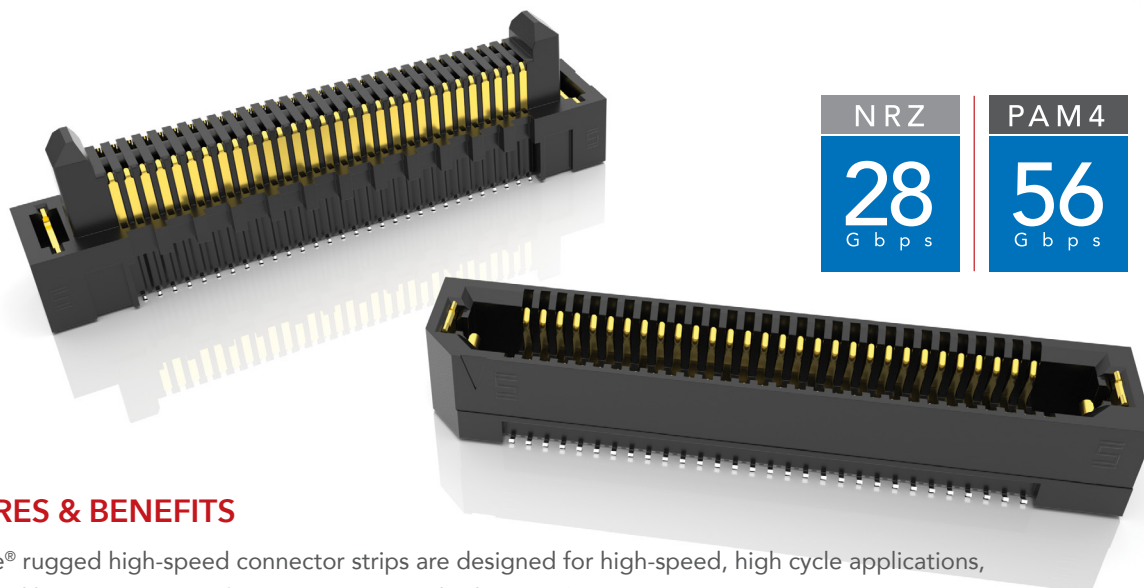


RUGGED HIGH-SPEED STRIPS



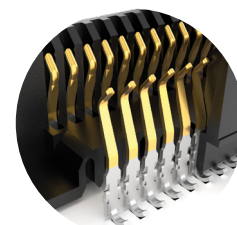
NRZ	PAM 4
28 Gbps	56 Gbps

FEATURES & BENEFITS

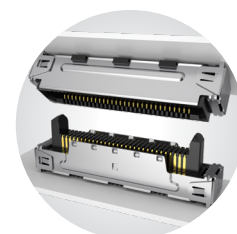
Edge Rate® rugged high-speed connector strips are designed for high-speed, high cycle applications, and enabled by Samtec's signal integrity-optimized Edge Rate® contact system.

- Up to 1.5 mm contact wipe for a reliable connection
- 20 to 200 positions
- Choice of 0.50 mm, 0.635 mm or 0.80 mm pitch
- 0.50 mm pitch system offers up to 40% PCB space savings vs. 0.80 mm pitch
- 0.635 mm pitch system with extremely slim 2.5 mm body width
- Rugged latching, extended guide posts and 360° shielding
- Severe Environment Testing qualified (ERM8/ERF8); aligns with MIL-DTL-55302.

Visit samtec.com/set



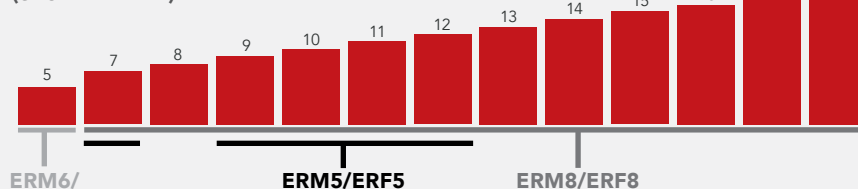
Signal integrity-optimized Edge Rate® contact system reduces broadside coupling



Rugged 360° shielding reduces EMI

EDGE RATE® STACK HEIGHT FLEXIBILITY

(shown in mm)



KEY SPECIFICATIONS

SERIES	PITCH	INSULATOR MATERIAL	TERMINAL MATERIAL	PLATING	OPERATING TEMP RANGE	CURRENT RATING	VOLTAGE RATING	LEAD-FREE SOLDERABLE
ERM5 / ERF5	0.50 mm	Black LCP	Phosphor Bronze or BeCu (ERM5), BeCu (ERF5)	Au or Sn over 50 μ" (1.27 μm) Ni	-55 °C to +125 °C	1.5 A	190 VAC/ 269 VDC	Yes
ERM6 / ERF6	0.635 mm		Copper Alloy			1.4 A	155 VAC/ 219 VDC	
ERM8 / ERF8	0.80 mm		Phosphor Bronze or BeCu (ERM8), BeCu (ERF8)			2.2 A	225 VAC/ 318 VDC	

(0.80 mm) .0315" PITCH • RUGGED HIGH-SPEED HEADERS & SOCKETS

TYPE	POSITIONS PER ROW	LEAD STYLE	PLATING OPTION	DV	OPTIONS	"X"R
------	-------------------	------------	----------------	----	---------	------

ERM8
= Header

ERF8
= Socket

**-005, -010, -011,
-013, -020, -025,
-030, -035, -040,
-049, -050, -060,
-070, -075, -100**

(100 Position Only Available
with ERM8-09.0 & ERF8-05.0
Lead Styles; -L or -EGP N/A)

**SPECIFY
LEAD
STYLE
FROM
CHART**

-L
= 10 μ" (0.25 μm)
Gold on contact,
Matte Tin on tail

-DS
= Differential Pair
(ERM8 -05.0 Lead Style
with -010, -013, -025,
-049 Positions only)
(-P not available)

-TR
= Tape & Reel
(100 Positions N/A)

-FR
= Full Reel
Tape & Reel
(must order
maximum
quantity per reel;
contact Samtec for
quantity breaks)
(100 Positions N/A)

-L
= Latching
(ERM8 -03.0, -05.0 & -09.0
Lead Styles only & -EGP
Option not available)
(ERF8 -05.0, -07.0 & -09.0
Lead Style only, -L & -EGP
Options not available)

-EGP
= Extended Guide Post
(ERM8 -05.0 & ERF8 -07.0
Lead Style Only & -L
Option not available)

-DSP
= Differential Pair with
Extended Guide Post
(ERM8 -05.0 Lead Style with
-013 and -025 Positions only)

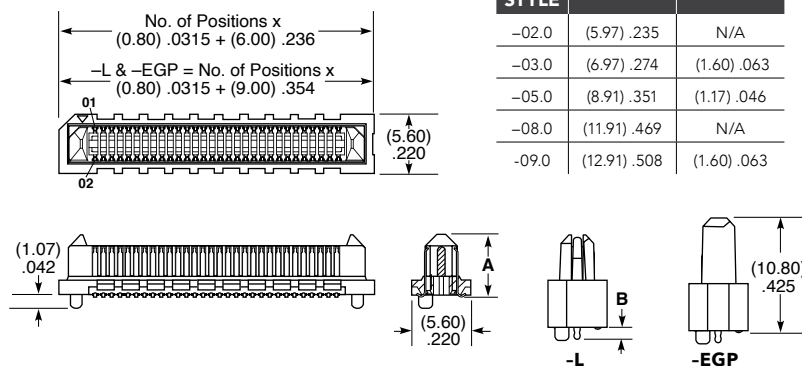
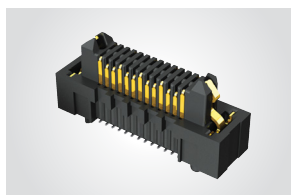
-K
= Polyimide Film
Pick & Place Pad
(-02.0 Lead Style not available)

-P
= Pick & Place Pad
(ERM8 -02.0, -03.0 &
-05.0 Lead Styles only)
(-DS not available)

ERM8

Board Mates:
ERF8

Cable Mates:
ERCD, ERDP



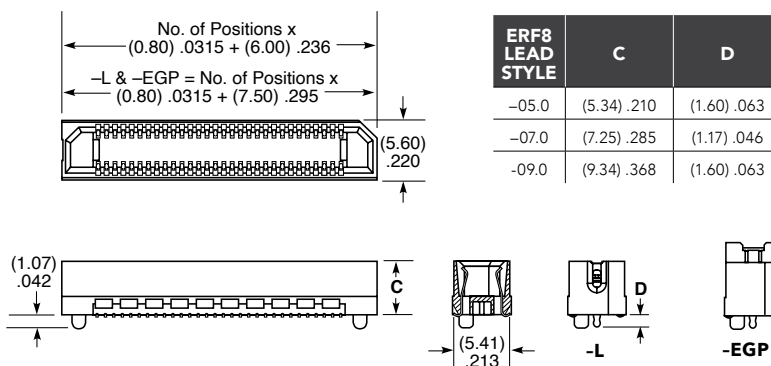
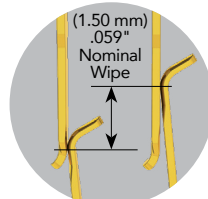
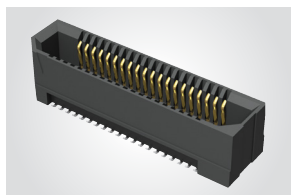
ERM8 LEAD STYLE	A	B
-02.0	(5.97) .235	N/A
-03.0	(6.97) .274	(1.60) .063
-05.0	(8.91) .351	(1.17) .046
-08.0	(11.91) .469	N/A
-09.0	(12.91) .508	(1.60) .063

View complete specifications at: samtec.com?ERM8

ERF8

Board Mates:
ERM8

ERF8
Cable Mates:
ERCD, ERDP



ERF8 LEAD STYLE	C	D
-05.0	(5.34) .210	(1.60) .063
-07.0	(7.25) .285	(1.17) .046
-09.0	(9.34) .368	(1.60) .063

Notes:

Severe Environment
Testing qualified; aligns
with MIL-DTL-55302.
Visit samtec.com/set

Some lengths, styles and
options are non-standard,
non-returnable.

View complete specifications at: samtec.com?ERF8

MATED HEIGHT*

ERM8 LEAD STYLE	ERF8 LEAD STYLE		
	-05.0	-07.0	-09.0
-02.0	(7.00) .276	(9.00) .354	(11.00) .433
-03.0	(8.00) .315	(10.00) .394	(12.00) .472
-05.0	(10.00) .394	(12.00) .472	(14.00) .551
-08.0	(13.00) .512	(15.00) .591	(17.00) .669
-09.0	(14.00) .551	(16.00) .630	(18.00) .709

*Processing conditions will affect mated height.