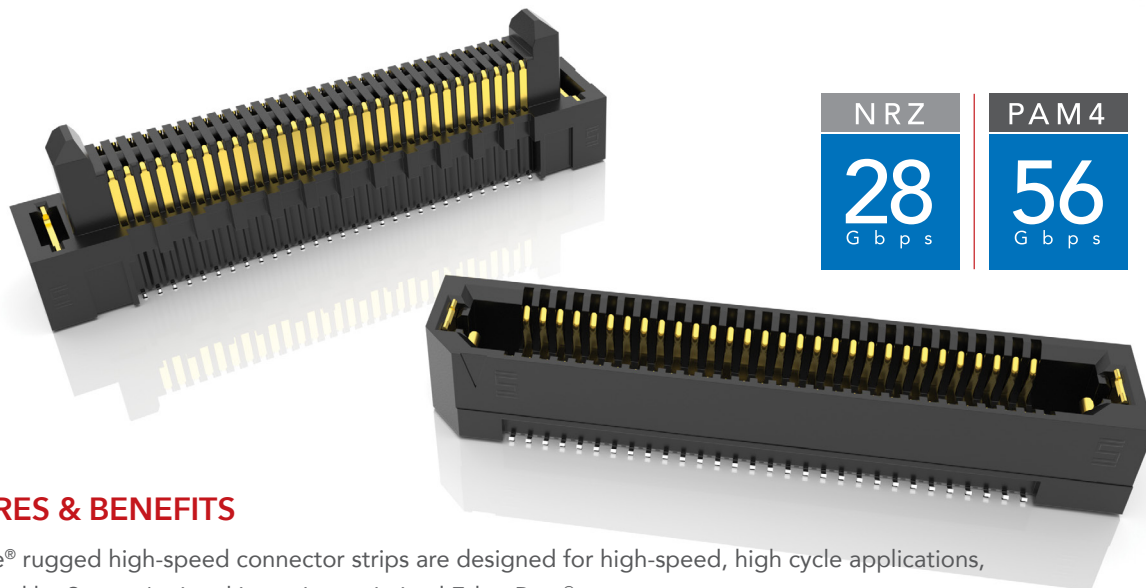


RUGGED HIGH-SPEED STRIPS



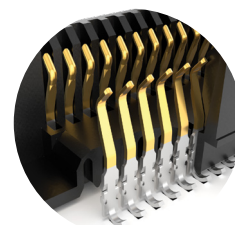
| | |
|------------|------------|
| NRZ | PAM 4 |
| 28 Gbps | 56 Gbps |

FEATURES & BENEFITS

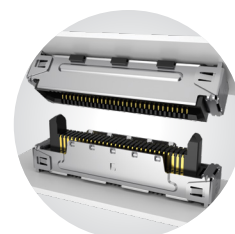
Edge Rate® rugged high-speed connector strips are designed for high-speed, high cycle applications, and enabled by Samtec's signal integrity-optimized Edge Rate® contact system.

- Up to 1.5 mm contact wipe for a reliable connection
- 20 to 200 positions
- Choice of 0.50 mm, 0.635 mm or 0.80 mm pitch
- 0.50 mm pitch system offers up to 40% PCB space savings vs. 0.80 mm pitch
- 0.635 mm pitch system with extremely slim 2.5 mm body width
- Rugged latching, extended guide posts and 360° shielding
- Severe Environment Testing qualified (ERM8/ERF8); aligns with MIL-DTL-55302.

Visit samtec.com/set



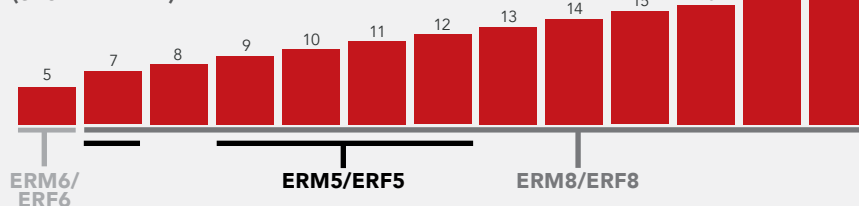
Signal integrity-optimized Edge Rate® contact system reduces broadside coupling



Rugged 360° shielding reduces EMI

EDGE RATE® STACK HEIGHT FLEXIBILITY

(shown in mm)



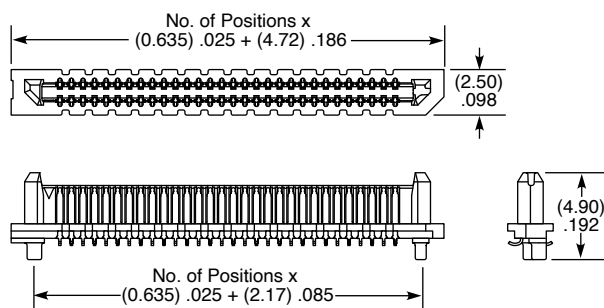
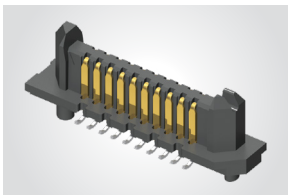
KEY SPECIFICATIONS

| SERIES | PITCH | INSULATOR MATERIAL | TERMINAL MATERIAL | PLATING | OPERATING TEMP RANGE | CURRENT RATING | VOLTAGE RATING | LEAD-FREE SOLDERABLE |
|-------------|----------|--------------------|---|----------------------------------|----------------------|----------------|------------------|----------------------|
| ERM5 / ERF5 | 0.50 mm | Black LCP | Phosphor Bronze or BeCu (ERM5), BeCu (ERF5) | Au or Sn over 50 μ" (1.27 μm) Ni | -55 °C to +125 °C | 1.5 A | 190 VAC/ 269 VDC | Yes |
| ERM6 / ERF6 | 0.635 mm | | Copper Alloy | | | 1.4 A | 155 VAC/ 219 VDC | |
| ERM8 / ERF8 | 0.80 mm | | Phosphor Bronze or BeCu (ERM8), BeCu (ERF8) | | | 2.2 A | 225 VAC/ 318 VDC | |

(0.635 mm) .025" PITCH • RUGGED HIGH-SPEED HEADERS & SOCKETS

| ERM6 | POSITIONS PER ROW | 01.5 | PLATING OPTION | DV | A | OPTION | K | "X"R |
|------|---|------|--|----|---|---|---|--|
| | -10, -20, -30, -40, -50, -60 (Standard Sizes) | | -L = 10 μ" (0.25 μm) Gold on contact, Matte Tin on tail | | | (Leave Blank for No Weld Tab) -WT = Weld Tab | | -TR = Tape & Reel -FR = Full Reel Tape & Reel (must order maximum quantity per reel; contact Samtec for quantity breaks) |

ERM6
Board Mates:
ERF6

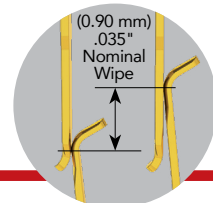


MATED HEIGHT*

| ERF6 LEAD STYLE | ERM6 LEAD STYLE |
|-----------------------|--------------------|
| | -01.5 |
| -03.5 | (5.00) .197 |

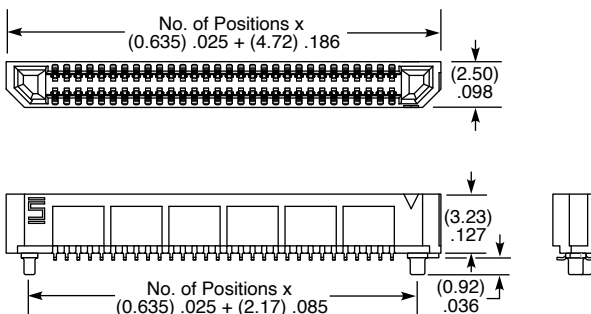
*Processing conditions will affect mated height.

View complete specifications at: samtec.com?ERM6



| ERF6 | POSITIONS PER ROW | 03.5 | PLATING OPTION | DV | A | OPTION | K | "X"R |
|------|---|------|--|----|---|---|---|--|
| | -10, -20, -30, -40, -50, -60 (Standard Sizes) | | -L = 10 μ" (0.25 μm) Gold on contact, Matte Tin on tail | | | (Leave Blank for No Weld Tab) -WT = Weld Tab | | -TR = Tape & Reel -FR = Full Reel Tape & Reel (must order maximum quantity per reel; contact Samtec for quantity breaks) |

ERF6
Board Mates:
ERM6



MATED HEIGHT*

| ERF6 LEAD STYLE | ERM6 LEAD STYLE |
|-----------------------|-----------------|
| | -01.5 |
| -03.5 | (5.00) .197 |

*Processing conditions will affect mated height.

Notes:
Kapton pad and tape & reel
packaging are standard.

Some lengths, styles and
options are non-standard,
non-returnable.

View complete specifications at: samtec.com?ERF6