

## RUGGED SEALED I/O SYSTEMS



### FEATURES & BENEFITS

- Meets IP68 & IP67 requirements for dust and waterproof sealing
- Ideal for high reliability in harsh environments
- Bayonet circulars in 12 mm, 16 mm and 22 mm shell sizes with choice of pin configuration and gender (ACX)
- Lightweight plastic mini push-pull system in a small form factor for increased panel density (MCP/MCR)
- Threaded sealed circular systems available with USB or Ethernet
- Rectangular systems offer a 25-45% panel area savings
- Rugged dust caps available

### KEY SPECIFICATIONS

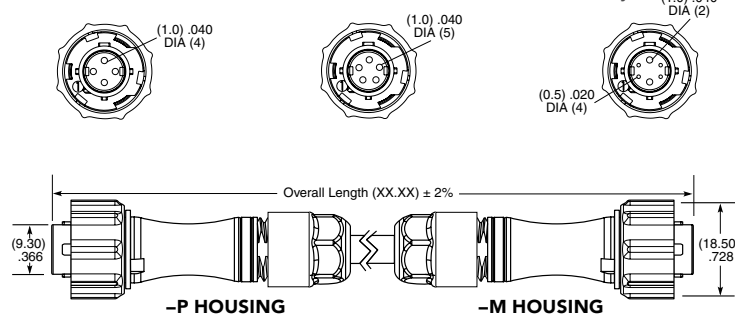
SERIES	TYPE	INSULATOR MATERIAL	TERMINAL MATERIAL	CONTACT MATERIAL	OPERATING TEMP RANGE
ACP-12/ACR-12	Bayonet Circular	Thermoplastic	Brass	Brass/BeCu	-10 °C to +80 °C
ACP-16/ACR-16					-10 °C to +105 °C
ACP-22/ACR-22					-10 °C to +105 °C
MCP/MCR	Mini Push-Pull	PPS	Phosphor Bronze	Phosphor Bronze	-20 °C to +80 °C
BCU/BPCU/BRU	Threaded Circular	Thermoplastic	--	Copper Alloy	-40 °C to +80 °C
SCRUS/SCRES		PBT	--	Phosphor Bronze	-20 °C to +75 °C (SCRUS) -40 °C to +70 °C (SCRES)
RPBE/RPCE	Rectangular	Black LCP (RPBE) Glass Filled Thermoplastic (RPCE)	--	Phosphor Bronze	-40 °C to +75 °C
RPBU/RPCU		Black LCP	--	Phosphor Bronze	-20 °C to +80 °C

# 12 mm • IP68 SEALED CABLE ASSEMBLY

SERIES	12	LEAD STYLE	PLATING OPTION	LENGTH	END 1	END 2	HOUSING MATERIAL	KEYING OPTIONS
ACP Terminal		-01 = 1.0 mm DIA (4) terminals or sockets (24 AWG)	-G = 10 μ" (0.25 μm) Gold over 50 μ" (1.27 μm) Ni on contact	- "XX.XX" = Length in meters (00.25 m min. to 50.00 m max.) Standard lengths	-T = Terminal	-T = Terminal (ACP only)	-P = Plastic	-1 = Orange, 45°
ACR Socket		-02 = 1.0 mm DIA (5) terminals or sockets (24 AWG)			-S = Socket (N/A with End 2 -T)	-S = Socket (ACP only)	-M = Metal	
		-05 = 1.0 mm DIA (2) terminals or sockets (24 AWG) + 0.5 mm DIA (4) terminals or sockets (28 AWG)				-BC = Blunt Cut  -S1 = Connector determine by lead style. See chart for end 2 connector used. (ACR only)		

## ACP-12

End 1/2 Mates:  
ACP-12  
ACRK-12

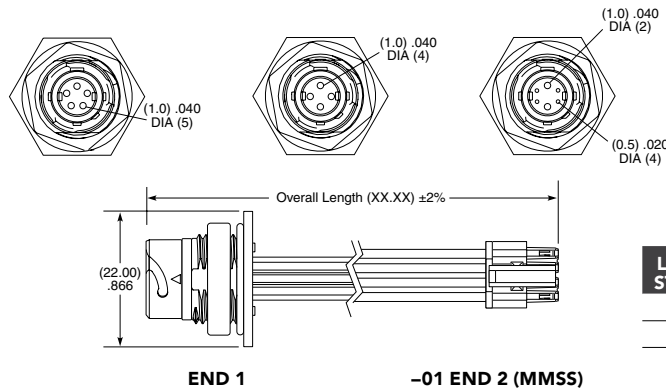
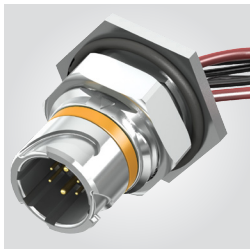


View complete specifications at: [samtec.com?ACP-12](http://samtec.com?ACP-12)

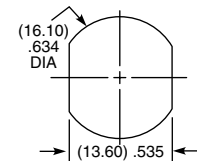
## ACR-12

End 1 Mates:  
ACP-12  
ACPK-12

End 2 Mates:  
IPL1



### PANEL OPENING



LEAD STYLE	-S1 END 2	MATES WITH -S1
-01	MMSS (24 AWG)	IPL1
-02	MMSS (24 AWG)	
-05	MMSS (24 AWG (2x), 28 AWG (4x))	

View complete specifications at: [samtec.com?ACR-12](http://samtec.com?ACR-12)

CURRENT RATING		
LEAD STYLE	PINS POWERED	CCC per PIN
-01	4	3.8 A
-02	5	3.6 A
-05	2 (plus 4 signal pins powered @ 1.2 A)	5.0 A

KITS AVAILABLE
<a href="http://www.samtec.com?ACPK-12">www.samtec.com?ACPK-12</a>
<a href="http://www.samtec.com?ACRK-12">www.samtec.com?ACRK-12</a>

For general reference only. Contact [AccliMate@samtec.com](mailto:AccliMate@samtec.com) for applications requiring higher current carrying capacity.

**Note:**  
Some lengths, styles and  
options are non-standard,  
non-returnable.