

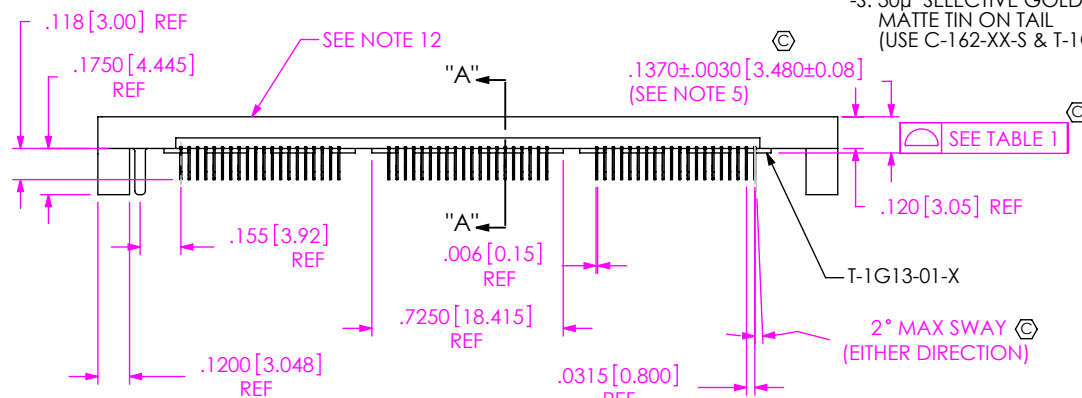
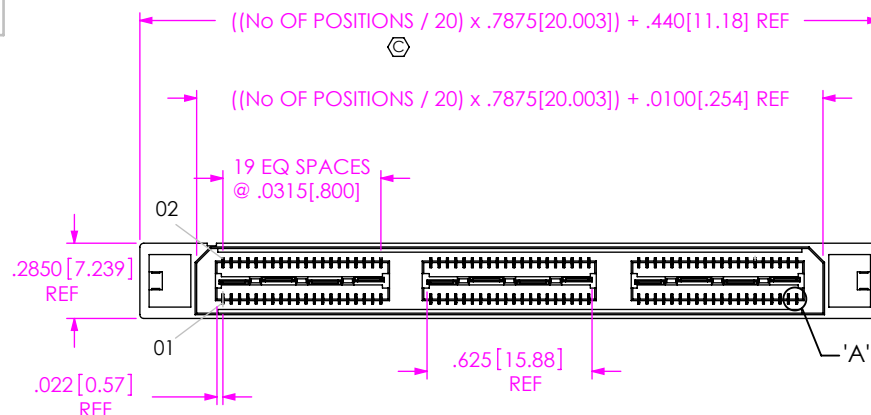
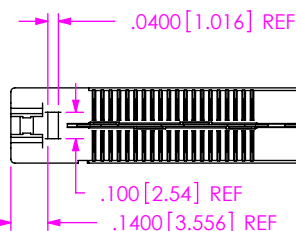
DO NOT  
SCALE FROM  
THIS PRINT

FIG 1



## NOTES:

1. REPRESENTS A CRITICAL DIMENSION.
2. MINIMUM CONTACT RETENTION: 6 OZ
3. MINIMUM GROUND PLANE RETENTION: 8 OZ
4. PARTS ARE MOLD TO POSITION.
5. MAXIMUM VARIANCE OF .002[0.05]
6. -L PLATING CAN BE SUBSTITUTED FOR -F PLATING.
7. NOTE DELETED.
8. BOARD THICKNESS TO BE MEASURED FROM SOLDER PAD TO SOLDER PAD.
9. SEE [HTTP://SUDDENDOC.SAMTEC.COM/PROCESSING/EDGE-MOUNT-PROCESSING.PDF](http://SUDDENDOC.SAMTEC.COM/PROCESSING/EDGE-MOUNT-PROCESSING.PDF) FOR INFORMATION ON PROCESSING EDGEMOUNT PARTS TO BOARDS.
10. -EM3 IS NOT A STANDARD OFFERING; AVAILABLE AS AN ASP ONLY.
11. NOTE DELETED.
12. SIDE WALLS ARE RIBBED AS NECESSARY TO CONTROL BOW.
13. AVAILABLE FOR EXISTING CUSTOMERS ONLY.
14. ORDERS WILL BE PACKAGED ACCORDING TO THE SAMTEC PACKAGING EFFICIENCY STANDARDS (SPES) FOUND ON [WWW.SAMTEC.COM](http://WWW.SAMTEC.COM).

## QSE-XXX-01-X-D-EMX-XX

## No OF POSITIONS

-020, -040, -060  
\*\*-080, \*\*-100  
(PER ROW)

## LEAD STYLE

-01: .1380 [3.505]

## PLATING SPECIFICATION

PLATING THICKNESSES ARE FOR SIGNAL PINS ONLY. FOR GROUND PLANE THICKNESSES, SEE PP-T-1G13-XX-X.  
-F: 3μ" FLASH SELECTIVE GOLD IN CONTACT AREA MATTE TIN ON TAIL (SEE NOTE 6) (USE C-162-XX-F & T-1G13-01-F)  
-L: 10μ" LIGHT SELECTIVE GOLD IN CONTACT AREA WITH MATTE TIN ON TAIL (USE C-162-XX-L & T-1G13-01-L)  
-H: 30μ" HEAVY GOLD IN CONTACT AREA 3μ" FLASH GOLD ON TAILS (USE C-162-XX-H & T-1G13-01-G)  
-TL: TIN/LEAD (90/10±5%) CONTACT AND TAIL  
-S: 30μ" SELECTIVE GOLD IN CONTACT AREA, MATTE TIN ON TAIL (USE C-162-XX-S & T-1G13-01-L)

## OPTION

- \* -GP: GUIDE POST (60 POS MAX) (SEE FIG 2, SEE SHEET 2)
- TY: TRAY PACKAGING
- \* EM3-GP = NOT TOOLED

## EDGE MOUNT THICKNESS

-EM2: .064±.004[1.63±0.10] PCB (USE QSE-20-01-D-EM2-XX & C-162-01-X)  
-EM3: (USE QSE-20-01-D-EM3-XX & C-162-02-X) (SEE NOTE 10)

## ROW SPECIFICATION

-D: DOUBLE (USE QSE-20-01-D-EMX-XX)

## No OF BANKS

\* = SEE NOTE 10

\*\* = SEE NOTE 13

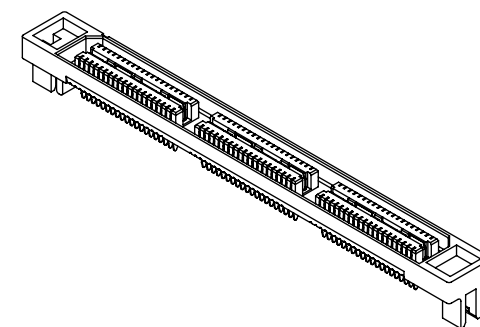


TABLE 1

No OF POSITIONS	GND PLANE COPLANARITY	ASSEMBLY BOW
-020 THRU -060	.004 [0.10]	.004 [0.10]
**080 THRU **100	.005[1.27]	.006[0.15]

\*\* = SEE NOTE 13

UNLESS OTHERWISE SPECIFIED, DIMENSIONS ARE IN INCHES.

TOLERANCES ARE:

DECIMALS ANGLES  
.XX: ±.01[.3]  
.XXX: ±.005[.13]  
.XXXX: ±.0020[.051]

## PROPRIETARY NOTE

THIS DOCUMENT CONTAINS CONFIDENTIAL AND PROPRIETARY INFORMATION AND ALL DESIGN, MANUFACTURING, REPRODUCTION, USE, PATENT RIGHTS AND SALES RIGHTS ARE EXPRESSLY RESERVED BY SAMTEC, INC. THIS DOCUMENT SHALL NOT BE DISCLOSED, IN WHOLE OR PART, TO ANY UNAUTHORIZED PERSON OR ENTITY NOR REPRODUCED, TRANSFERRED OR INCORPORATED IN ANY OTHER PROJECT IN ANY MANNER WITHOUT THE EXPRESS WRITTEN CONSENT OF SAMTEC, INC.

MATERIAL: DO NOT SCALE DRAWING

SHEET SCALE: 1.375:1

DESCRIPTION:

.8mm EDGE MOUNT HS SOCKET ASSEMBLY

DWG. NO.

QSE-XXX-01-X-D-EMX-XX

BY: DEAN P

5/24/2000

SHEET 1 OF 3

INSULATOR: LCP, UL 94VO

-EM2 COLOR: BLACK

-EM3 COLOR: NATURAL

CONTACT & GROUND PLANE: PHOS BRONZE

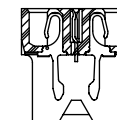
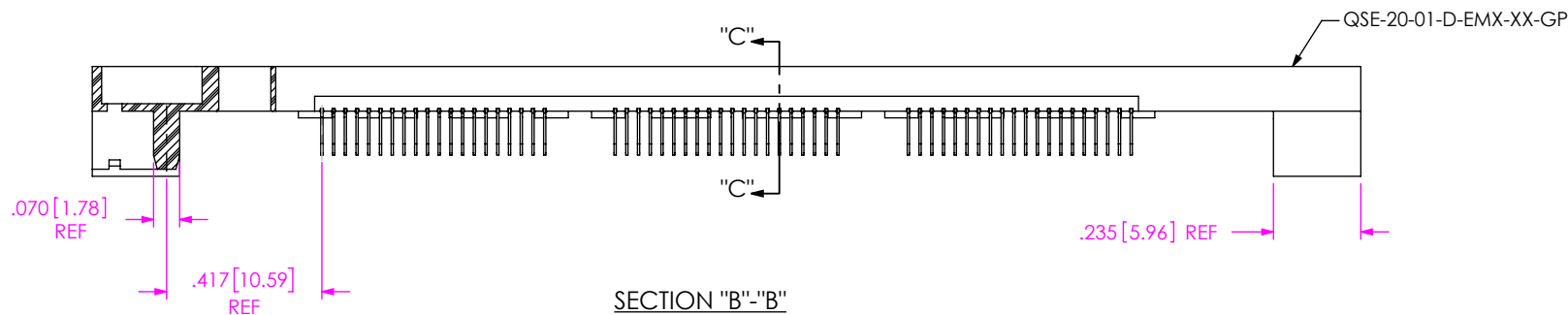
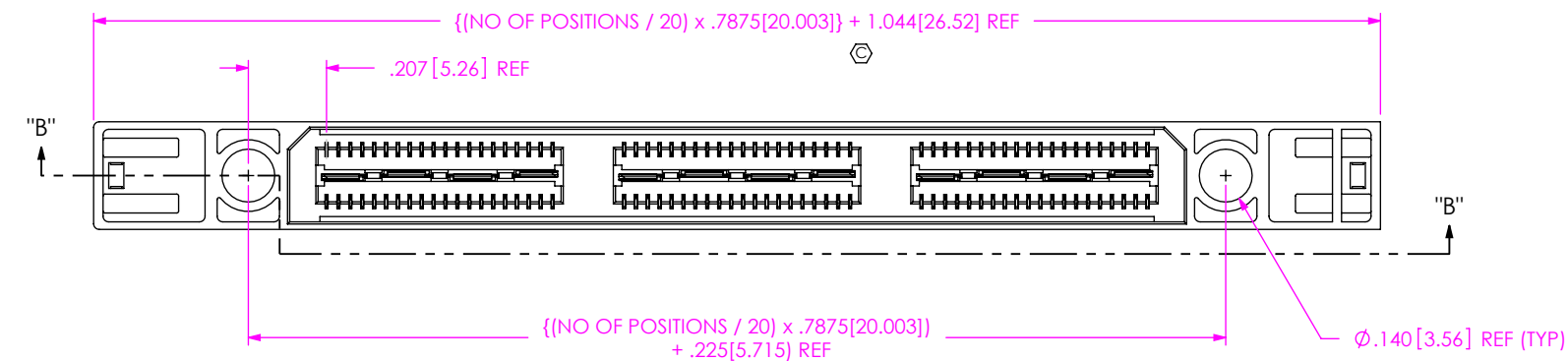
c:\enterprise\dwg\MISC\MKTG\QSE-XXX-01-X-D-EMX-XX-MKT.SLDDRW

**samtec**

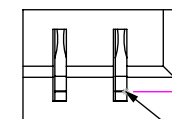
520 PARK EAST BLVD, NEW ALBANY, IN 47150  
PHONE: 812-944-6733 FAX: 812-948-5047  
e-Mail: info@SAMTEC.com code 55322

FIG 2

-GP: GUIDE POST  
(DIFFERENT AS SHOWN, OTHERWISE SAME AS FIG 1)  
(60 POSITION MAX)  
(ONLY AVAILABLE WITH -EM2 OPTION)



SECTION "C"-"B"

DETAIL 'A'  
SCALE 10:1

.008[0.19] MAX

LINE WHERE ROUNDED TOP  
OF CONTACT TRANSITIONS  
TO STRAIGHT BEAM

CRITICAL DIMENSION INSPECTION INSTRUCTION TABLE

ASSEMBLY OPERATION	IN-PROCESS INSPECTION
FILL C-162-XX-X	C1, C2, C5*, C7, C8
FILL T-1G13-01-X	C6
WHERE APPLICABLE *	
CPCs INTENTIONALLY DELETED: C4*	

## \* PROPRIETARY NOTE \*

THIS DOCUMENT CONTAINS CONFIDENTIAL AND PROPRIETARY INFORMATION AND ALL DESIGN, MANUFACTURING, REPRODUCTION, USE, PATENT RIGHTS AND SALES RIGHTS ARE EXPRESSLY RESERVED BY SAMTEC, INC. THIS DOCUMENT SHALL NOT BE DISCLOSED, IN WHOLE OR PART, TO ANY UNAUTHORIZED PERSON OR ENTITY NOR REPRODUCED, TRANSFERRED OR INCORPORATED IN ANY OTHER PROJECT IN ANY MANNER WITHOUT THE EXPRESS WRITTEN CONSENT OF SAMTEC, INC.

DO NOT SCALE DRAWING

SHEET SCALE: 2:1

**samtec**

520 PARK EAST BLVD, NEW ALBANY, IN 47150  
PHONE: 812-944-6733 FAX: 812-948-5047  
e-Mail info@SAMTEC.com code 55322

DESCRIPTION:  
.8mm EDGE MOUNT HS SOCKET ASSEMBLY

DWG. NO.  
QSE-XXX-01-X-D-EMX-XX

BY: DEAN P 5/24/2000 SHEET 2 OF 3

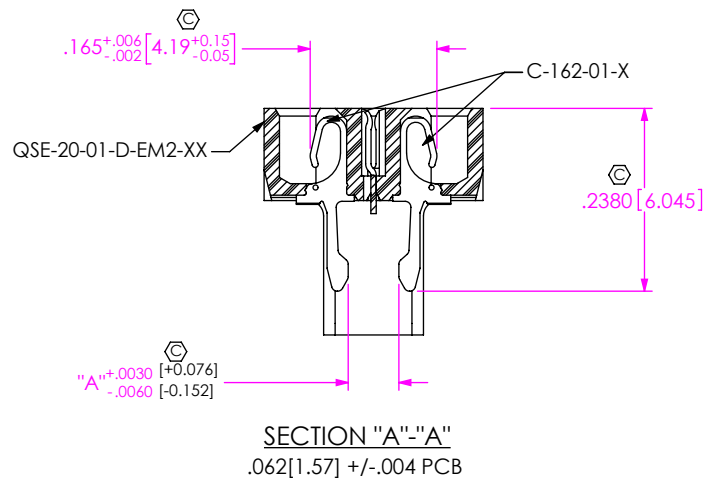


TABLE 2	
EDGE MOUNT THICKNESS	"A"
-EM2	.0660 [1.676]
-EM3	.0920 [2.338]

<p>• PROPRIETARY NOTE •</p> <p>THIS DOCUMENT CONTAINS CONFIDENTIAL AND PROPRIETARY INFORMATION AND ALL DESIGN, MANUFACTURING, REPRODUCTION, USE, PATENT RIGHTS AND SALES RIGHTS ARE EXPRESSLY RESERVED BY SAMTEC, INC. THIS DOCUMENT SHALL NOT BE DISCLOSED, IN WHOLE OR PART, TO ANY UNAUTHORIZED PERSON OR ENTITY NOR REPRODUCED, TRANSFERRED OR INCORPORATED IN ANY OTHER PROJECT IN ANY MANNER WITHOUT THE EXPRESS WRITTEN CONSENT OF SAMTEC, INC.</p>		<p>520 PARK EAST BLVD, NEW ALBANY, IN 47150 PHONE: 812-944-6733 FAX: 812-948-5047 e-Mail info@SAMTEC.com code 55322</p>	
DO NOT SCALE DRAWING		DESCRIPTION: .8mm EDGE MOUNT HS SOCKET ASSEMBLY	
SHEET SCALE: 2:1		DWG. NO. QSE-XXX-01-X-D-EMX-XX	
		BY: DEAN P	5/24/2000 SHEET 3 OF 3