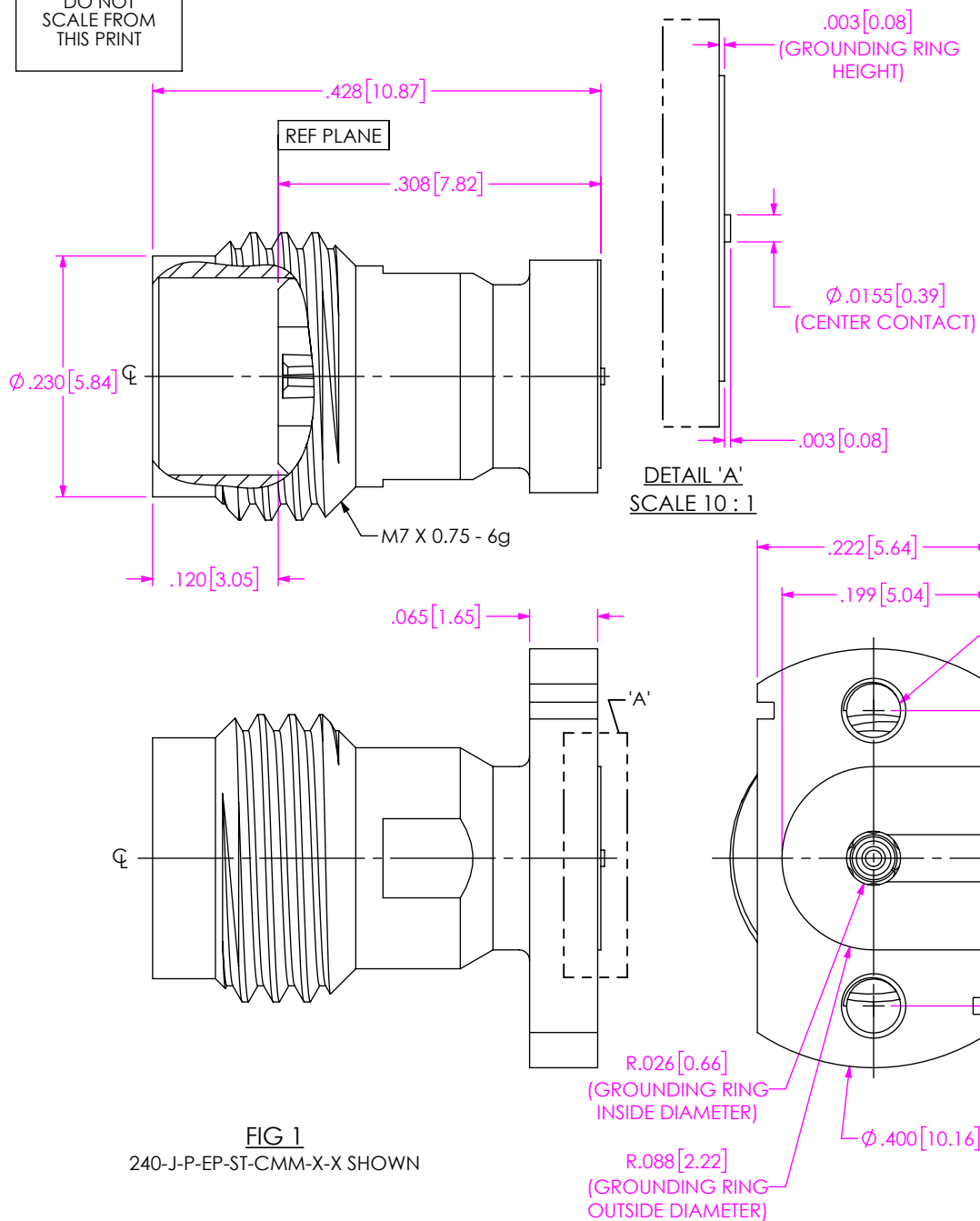


# REVISION F

**DESIGNED AND DIMENSIONED IN INCHES[MILLIMETERS]  
ALL DIMENSIONS REFERENCE EXCEPT AS SHOWN**

DO NOT  
SCALE FROM  
THIS PRINT



**FIG 1**  
240-J-P-EP-ST-CMM-X-X SHOWN

## NOTES:

1. RECOMMENDED MOUNTING TORQUE 0.5~0.8 INCH-POUNDS.
2. THIS IS A GENERAL FOOTPRINT AND IS NOT OPTIMIZED FOR ELECTRICAL PERFORMANCE, CONTACT SIG@SAMTEC.COM FOR ASSISTANCE WITH ELECTRICAL LAYOUT.

## 240-J-P-EP-ST-CMM-X-X

### SERIES

240: 2.40MM

### GENDER

-J: JACK

### TYPE

-P: PCB

### FINISH

-EP: 50μ" EXTRA HEAVY GOLD  
CENTER CONTACT, PASSIVATED  
OUTER CONTACT

### PACKAGING

-BLANK: INDIVIDUALLY BAGGED  
-B: FULL TRAY (QTY >= 100)

### OPTION

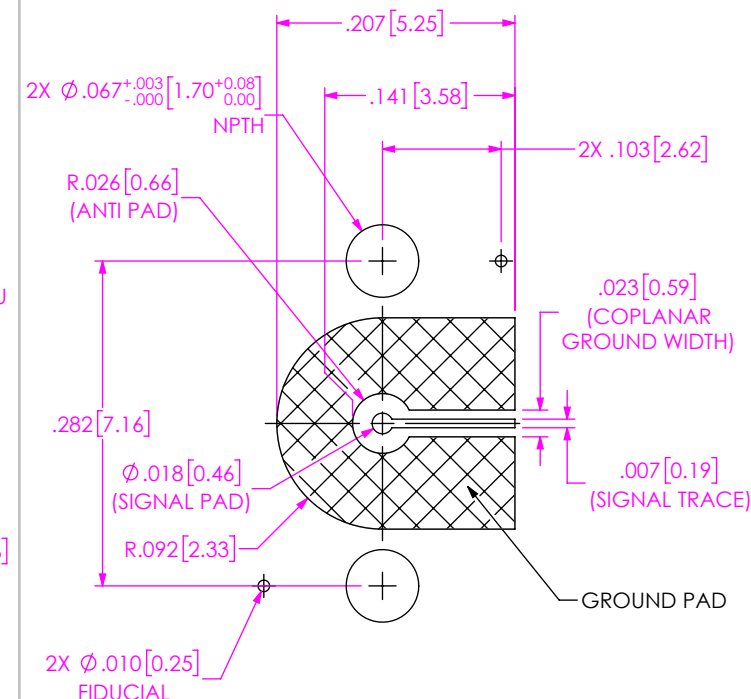
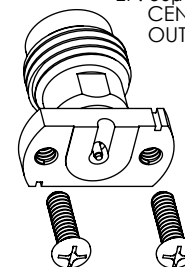
-1: OPTION 1 (WITHOUT SCREWS)  
-2: OPTION 2 (FOR PCB THICKNESS .016" TO .125")  
-3: OPTION 3 (FOR PCB THICKNESS .069" TO .178")

### TERMINATION

-CMM: COMPRESSION MOUNT MICROSTRIP

### ORIENTATION

-ST: STRAIGHT



**RECOMMENDED PCB LAYOUT**  
(SEE NOTE 2)

### PROPRIETARY NOTE

THIS DOCUMENT CONTAINS CONFIDENTIAL AND PROPRIETARY INFORMATION AND ALL DESIGN, MANUFACTURING, REPRODUCTION, USE, PATENT RIGHTS AND SALES RIGHTS ARE EXPRESSLY RESERVED BY SAMTEC, INC. THIS DOCUMENT SHALL NOT BE DISCLOSED, IN WHOLE OR PART, TO ANY UNAUTHORIZED PERSON OR ENTITY NOR REPRODUCED, TRANSFERRED OR INCORPORATED IN ANY OTHER PROJECT IN ANY MANNER WITHOUT THE EXPRESS WRITTEN CONSENT OF SAMTEC, INC.

### MATERIAL:

BODY, BUSHING & SCREW: STAINLESS STEEL  
SOCKET: COPPER ALLOY

DO NOT SCALE DRAWING  
SHEET SCALE: 6:1

DESCRIPTION:  
2.40MM ST JACK FOR COMPRESSION MOUNT MICROSTRIP

### DWG. NO.

**240-J-P-EP-ST-CMM-X-X**

BY: SHERRY W 2/24/2019 SHEET 1 OF 1