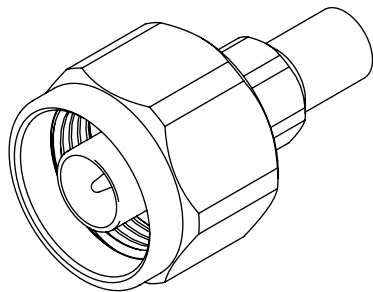
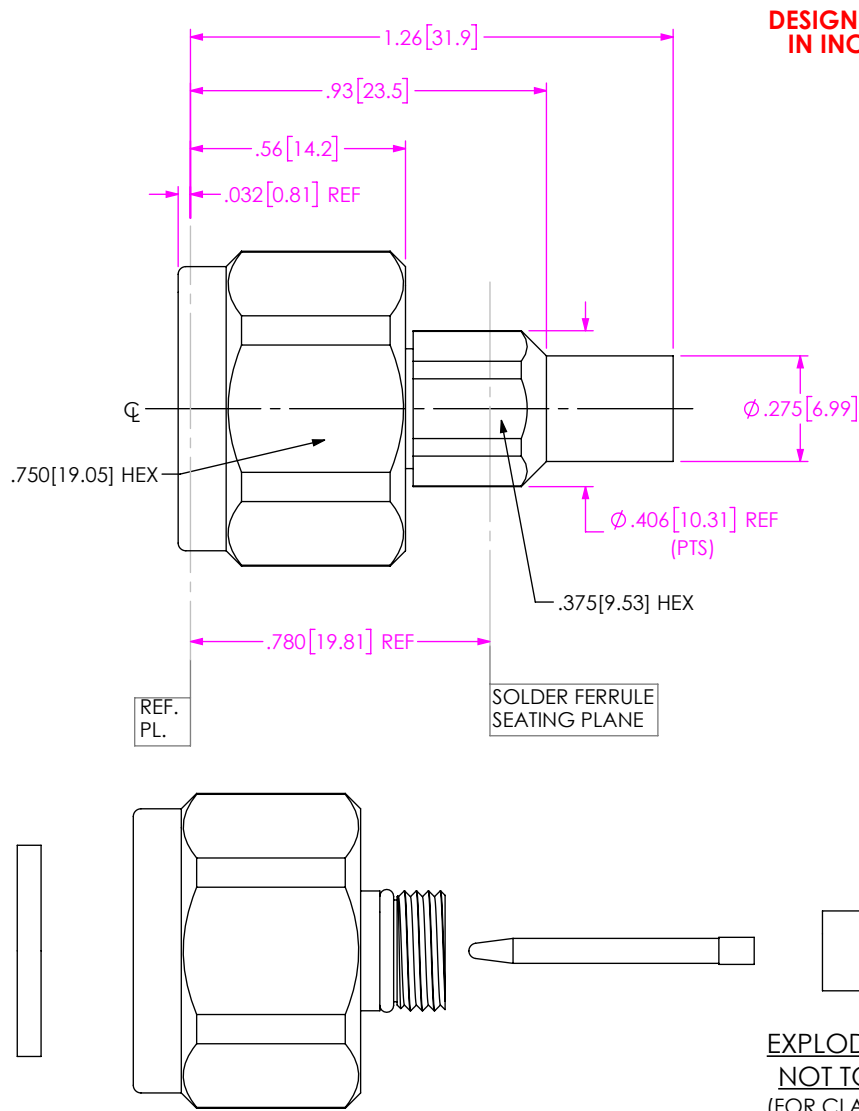


DO NOT
SCALE FROM
THIS PRINT



PRF06-P-C-EP-142-SS

SERIES
-06: N TYPE

GENDER
-P: PLUG

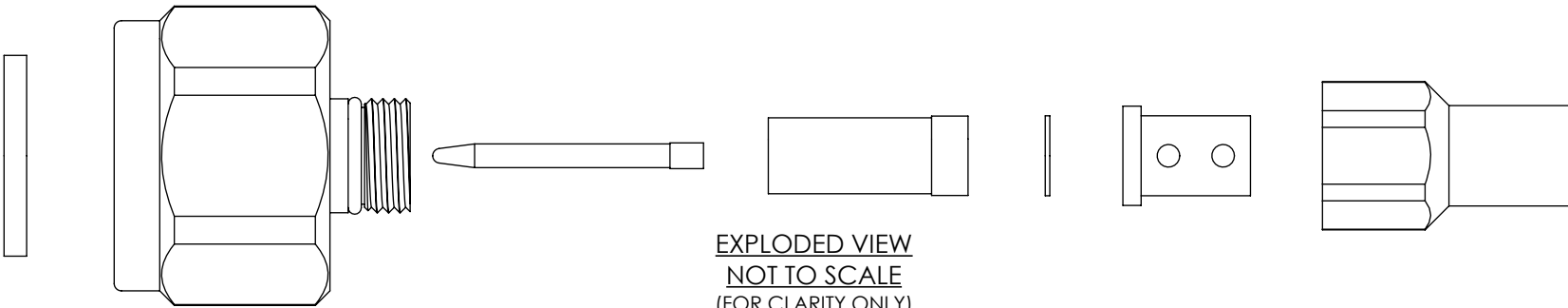
TYPE
-C: CABLE

TERMINATION
-S: SOLDER CLAMP

ORIENTATION
-S: STRAIGHT

CABLE TYPE
-142: HARBOUR LL142

FINISH
-EP: 50μ" EXTRA HEAVY GOLD
CENTER CONTACT,
PASSIVATED OUTER CONTACT




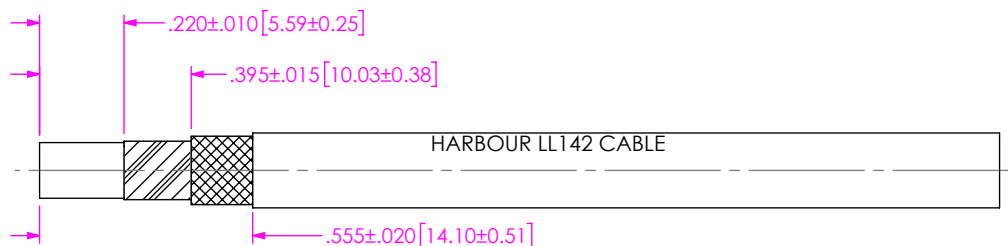
NOTES:

1. MATERIAL:
BODY, BUSHING, CLAMP NUT: STAINLESS STEEL
CONTACT: BERYLLIUM COPPER
SOLDER FERRULE: BRASS ALLOY
INSULATORS: PTFE
GASKET, O-RING: SILICONE RUBBER
2. FINISH:
BODY, BUSHING, CLAMP NUT: PASSIVATED
CONTACT, SOLDER FERRULE: 50μ" MIN. GOLD OVER 50μ" MIN. NICKEL PLATE
3. PERFORMANCE:
IMPEDANCE: 50 Ω
FREQUENCY: DC TO 18 GHz
VSWR: 1.16:1 MAXIMUM
INSERTION LOSS: 0.04 X √f(GHz)
DWV: 2500 Vrms

4. PCI P/N: 3177

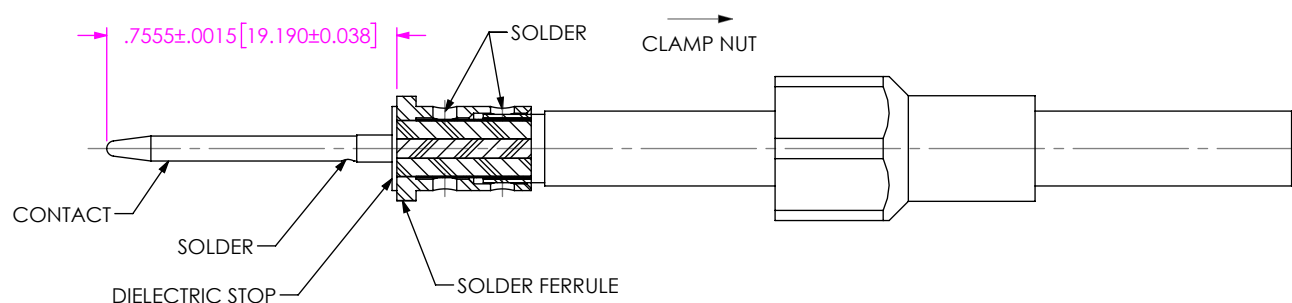
F:\DWG\MISC\MKTG\PRF06-P-C-EP-142-SS-MKT.SLDDRW

UNLESS OTHERWISE SPECIFIED, DIMENSIONS ARE IN INCHES. TOLERANCES ARE: DECIMALS ANGLES .XX: ±.01[0.3] 1 ° .XXX: ±.005[0.13] .XXXX: ±.0005[0.013]		PROPRIETARY NOTE THIS DOCUMENT CONTAINS CONFIDENTIAL AND PROPRIETARY INFORMATION AND ALL DESIGN, MANUFACTURING, REPRODUCTION, USE, PATENT RIGHTS AND SALES RIGHTS ARE EXPRESSLY RESERVED BY SAMTEC, INC. THIS DOCUMENT SHALL NOT BE DISCLOSED, IN WHOLE OR PART, TO ANY UNAUTHORIZED PERSON OR ENTITY NOR REPRODUCED, TRANSFERRED OR INCORPORATED IN ANY OTHER PROJECT IN ANY MANNER WITHOUT THE EXPRESS WRITTEN CONSENT OF SAMTEC, INC.	 520 PARK EAST BLVD, NEW ALBANY, IN 47150 PHONE: 812-944-6733 FAX: 812-948-5047 e-Mail info@SAMTEC.com code 55322
DO NOT SCALE DRAWING SHEET SCALE: 2:1		DESCRIPTION: N PLUG(18GHZ). SOLDER CLAMP FOR HARBOUR LL142 CABLE	
		DWG. NO. PRF06-P-C-EP-142-SS	
BY: JESUS M 3/22/2019		SHEET 1 OF 3	



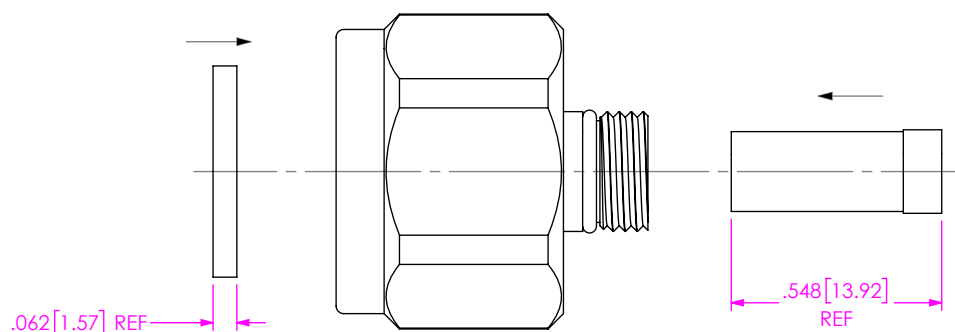
1. TRIM CABLE AS SHOWN

IN-PROCESS VIEW 1



- 2A. SLIDE CLAMP NUT OVER CABLE AS SHOWN.
 2B. INSERT CABLE INTO SOLDER FERRULE AS SHOWN THEN
 SOLDER BRAIDS TO FERRULE WHERE INDICATED.
 2C. TRIM EXPOSED CABLE DIELECTRIC FLUSH WITH SOLDER
 FERRULE FACE.
 2D. SLIDE DIELECTRIC STOP CABLE CENTER
 CONDUCTORS AGAINST FERRULE FACE AND SOLDER
 CONTACT FLUSH AGAINST STOP TO DIMENSION SHOWN

IN-PROCESS VIEW 2



3A. INSTALL INSULATOR & GASKET INTO SUB ASSEMBLY

IN-PROCESS VIEW 3

PROPRIETARY NOTE
 THIS DOCUMENT CONTAINS CONFIDENTIAL AND
 PROPRIETARY INFORMATION AND ALL DESIGN,
 MANUFACTURING, REPRODUCTION, USE, PATENT RIGHTS
 AND SALES RIGHTS ARE EXPRESSLY RESERVED BY SAMTEC,
 INC. THIS DOCUMENT SHALL NOT BE DISCLOSED, IN WHOLE
 OR PART, TO ANY UNAUTHORIZED PERSON OR ENTITY NOR
 REPRODUCED, TRANSFERRED OR INCORPORATED IN ANY
 OTHER PROJECT IN ANY MANNER WITHOUT THE EXPRESS
 WRITTEN CONSENT OF SAMTEC, INC.

DO NOT SCALE DRAWING

SHEET SCALE: 2:1

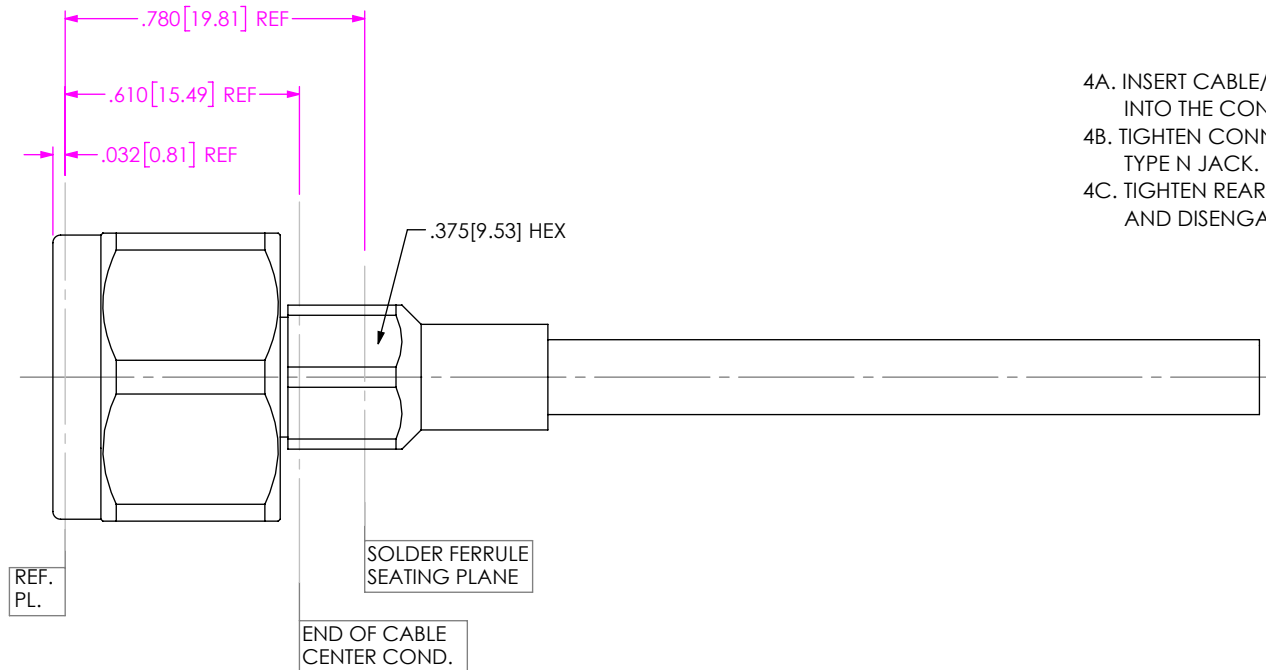
samtec

520 PARK EAST BLVD, NEW ALBANY, IN 47150
 PHONE: 812-944-6733 FAX: 812-948-5047
 e-Mail: info@SAMTEC.com code 55322

DESCRIPTION: N PLUG(18GHZ). SOLDER CLAMP
 FOR HARBOUR LL142 CABLE

DWG. NO. PRF06-P-C-EP-142-SS

BY: JESUS M 3/22/2019 SHEET 2 OF 3



- 4A. INSERT CABLE/CONTACT SUB-ASSEMBLY INTO THE CONNNECTOR UNTIL SEATED.
- 4B. TIGHTEN CONNECTOR COUPLING NUT TO MATING TYPE N JACK.
- 4C. TIGHTEN REAR CLAMP NUT TO 30-40 IN-LBS AND DISENGAGE MAIN INTERFACE FROM JACK.

IN-PROCESS VIEW 4

• PROPRIETARY NOTE •

THIS DOCUMENT CONTAINS CONFIDENTIAL AND PROPRIETARY INFORMATION AND ALL DESIGN, MANUFACTURING, REPRODUCTION, USE, PATENT RIGHTS AND SALES RIGHTS ARE EXPRESSLY RESERVED BY SAMTEC, INC. THIS DOCUMENT SHALL NOT BE DISCLOSED, IN WHOLE OR PART, TO ANY UNAUTHORIZED PERSON OR ENTITY NOR REPRODUCED, TRANSFERRED OR INCORPORATED IN ANY OTHER PROJECT IN ANY MANNER WITHOUT THE EXPRESS WRITTEN CONSENT OF SAMTEC, INC.

DO NOT SCALE DRAWING

SHEET SCALE: 2:1

samtec

520 PARK EAST BLVD, NEW ALBANY, IN 47150
 PHONE: 812-944-6733 FAX: 812-948-5047
 e-Mail: info@SAMTEC.com code 55322

DESCRIPTION: N PLUG(18GHZ). SOLDER CLAMP FOR HARBOUR LL142 CABLE

DWG. NO. PRF06-P-C-EP-142-SS

BY: JESUS M 3/22/2019 SHEET 3 OF 3