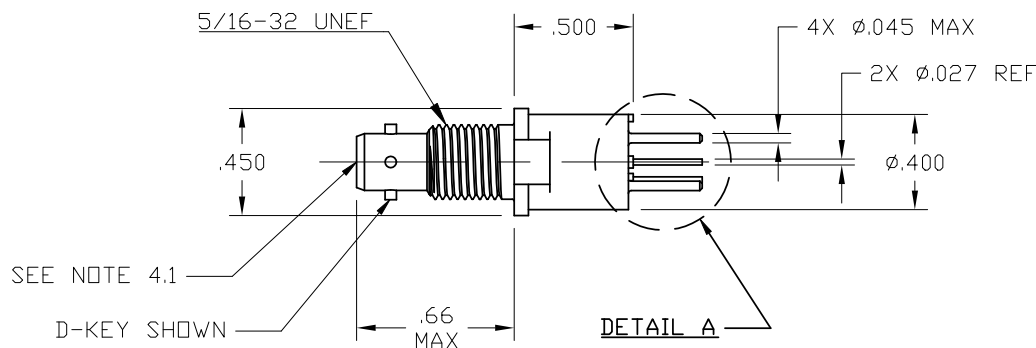
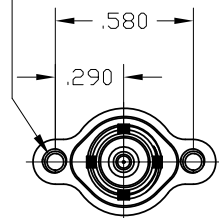
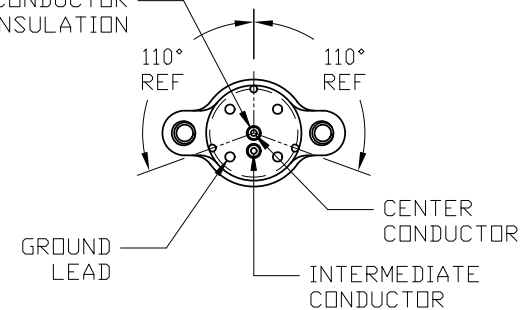


#2-56 UNC-2B, 2X
SEE NOTE 1.8



CONDUCTOR
INSULATION



NOTES:

1.0 MATERIALS AND FINISHES.

- 1.1 HOUSING BODY: BeCu ALLOY, ASTM B196, TB00 OR TD04 AND BRASS 360 HH. TIN PLATED PER ASTM-B545, OVER ELECTROLESS NICKEL PER AMS-C-26074.
- 1.2 CONNECTOR INSULATION: POLYETHERSULFONE.
- 1.3 CONDUCTOR INSULATION (2X): CROSS-LINKED POLYVINYLIDENE FLUORIDE.
- 1.4 CONDUCTOR LEAD (2X): 22 AWG (.027 MAX DIA), TIN PLATED COPPER WIRE.
- 1.5 GROUND LEADS (4X): .040 TYP DIAMETER, BRASS 360 HH. TIN PLATED PER ASTM-B545, OVER ELECTROLESS NICKEL PER AMS-C-26074.
- 1.6 LEAD SOLDERABILITY: PER J-STD-002, LESS STEAM AGING.
- 1.7 CONTACT; SOCKET: D-602-0127 / PIN: D-602-0126
- 1.8 SELF LOCKING THREADED INSERTS: CORROSION RESISTING STEEL PER AS7245.

2.0 PERFORMANCE REQUIREMENTS.

- 2.1 THIS PRODUCT MEETS THE APPLICABLE REQUIREMENTS OF TE SPECIFICATION D-6025.

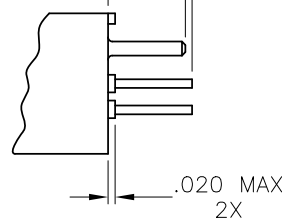
3.0 GENERAL CHARACTERISTICS.

- 3.1 OPERATING TEMPERATURE: -65°C TO 125°C
- 3.2 INSULATION RESISTANCE: GREATER THAN 5K MEGOHMS.
- 3.3 DIELECTRIC STRENGTH: 900 Vac @ 60 Hz.
- 3.4 CURRENT RATING: 3 AMPS MAX.
- 3.5 CONTACT RESISTANCE: INITIAL: 8 MILIOHMS MAX.
- 3.6 MATING COUPLING TORQUE: 10 INCH LBS MAX.

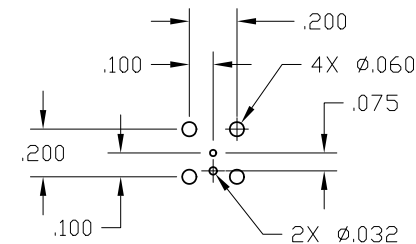
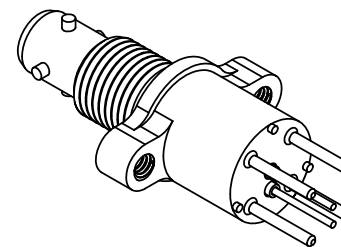
4.0 GENERAL NOTES.

- 4.1 ALIGNMENT BUSHING, IF PRESENT, MAY BE REMOVED AT USER'S DISCRETION.

4X, A B, 2X



DETAIL A



PCB HOLE LAYOUT
(PREFERRED)

DK-621-0434-SM-L20	SOCKET	A	DK-621-0433-P	.190-.201	.020-.040
DK-621-0440-SM-L20	SOCKET	D	DK-621-0439-P	.190-.201	.020-.040
DESCRIPTION	CONTACT	KEY	MATING CONNECTOR	A	B
PART ORDERING INFORMATION					

© 2018-2020 TE CONNECTIVITY CORPORATION, ALL RIGHTS RESERVED.

UNLESS OTHERWISE SPECIFIED DIMENSIONS ARE IN INCHES AND TOLERANCES ARE: .XXX ± .005 INCH .XX ± .02 INCH .X ± .1 INCH ANGLE ± 1° 0'		DRAWN: GMR CHECKED: _____ APPROVED: I. MYONG	DATE: 08/06/2018 DATE: _____ DATE: 08/06/2018	Raychem Databus CUSTOMER DRAWING TE TE Connectivity	
MATERIAL: SEE NOTES		THIRD ANGLE PROJECTION		TITLE: CONNECTOR, TRIAXAL, THREADED JACK, PCB MOUNT	
FINISH: SEE NOTES		CAD NAME: DK-621-04XX-XM-LXX_CD TCPN: _____		SIZE CODE IDENT. NO: B 06090	DOCUMENT NO: DK-621-04XX-XM-LXX
		SCALE: —		DO NOT SCALE THIS DRAWING	REV C1 SHEET 1 OF 1

THIS DRAWING AND THE INFORMATION SET FORTH HEREON ARE THE PROPERTY OF TE CONNECTIVITY CORPORATION, AND ARE TO BE HELD IN TRUST AND CONFIDENCE. PUBLICATION, DUPLICATION, DISCLOSURE OR USE FOR ANY PURPOSE NOT EXPRESSLY AUTHORIZED IN WRITING BY TE CONNECTIVITY CORPORATION IS PROHIBITED.