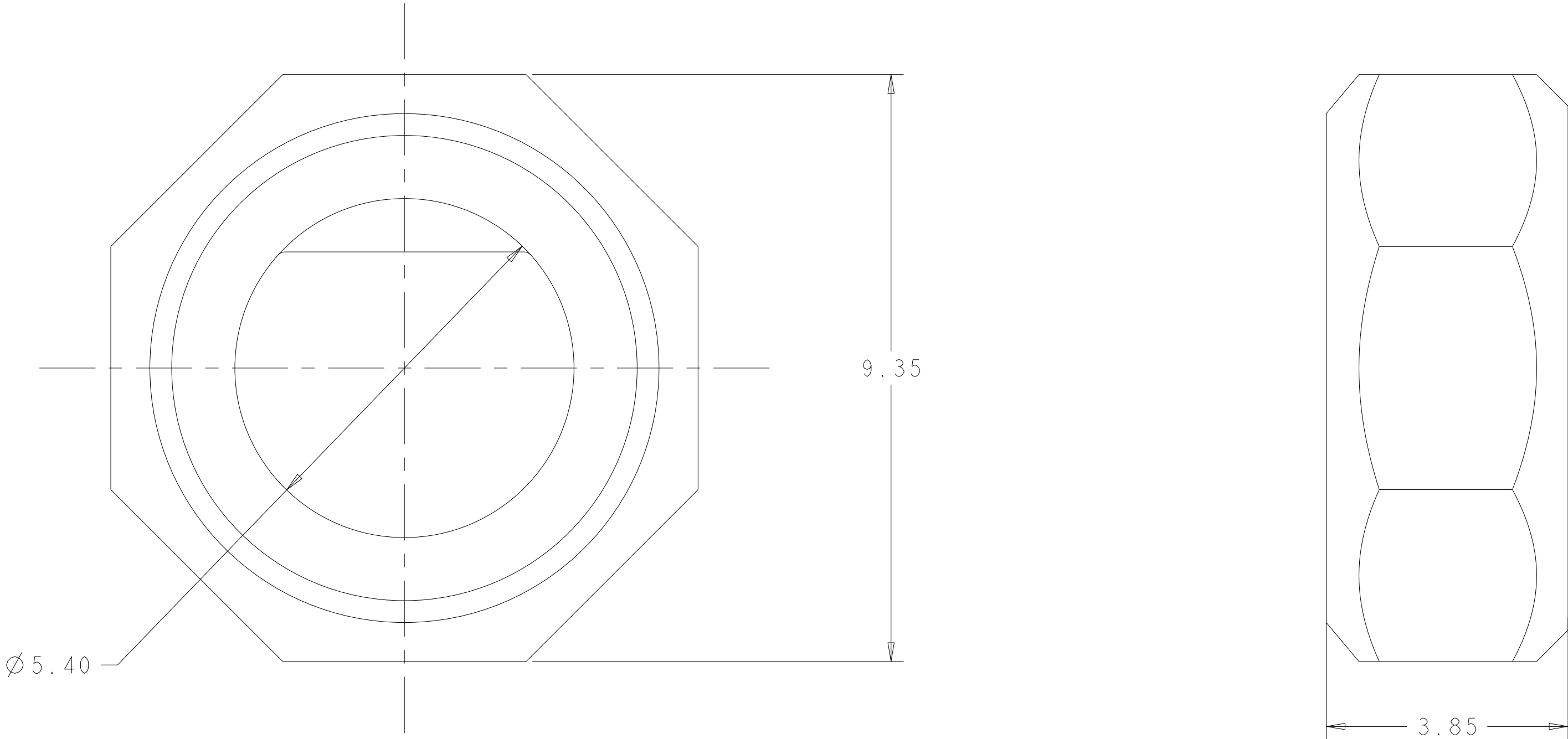
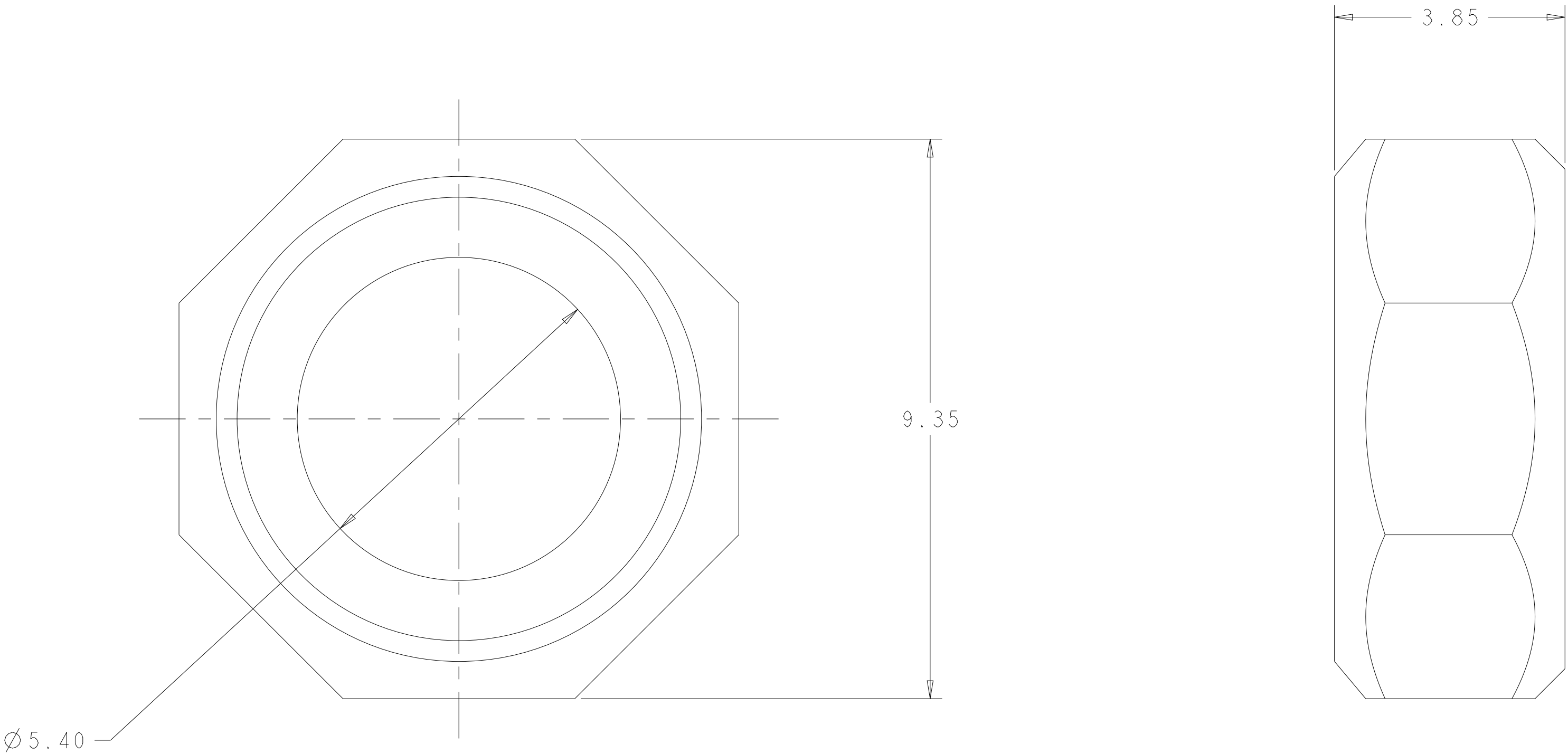


WARNING - THIS DOCUMENT CONTAINS TECHNOLOGY WHOSE EXPORT IS RESTRICTED BY THE EXPORT ADMINISTRATION REGULATIONS ("EAR") PURSUANT TO 15 C.F.R. PARTS 730-774. VIOLATIONS OF THE EAR ARE SUBJECT TO SEVERE CRIMINAL PENALTIES UNDER THE EXPORT CONTROL REFORM ACT, AS AMENDED (TITLE 50, U.S.C., SEC. 4801, ET SEQ.).

LOC		DIST		REVISIONS				
P	LTR	DESCRIPTION			DATE	DWN	APVD	
		A	ECO-13-015101			27SEP2013	DB	KT
		B	REVISED PER ECO-14-007808			29MAY2014	BY	KMT
		C	REV PER ECN-24-299293			27DEC2024	JAB	MS





2102503-2
(KEYED)



2102503-4
(NON-KEYED)

WEIGHT	DESCRIPTION	PART NUMBER
1.25g	NON-KEYED	2102503-4
1.30g	KEYED	2102503-2

THIS DRAWING IS A CONTROLLED DOCUMENT.		DWN D. BELACK	10FEB2012	 TE Connectivity				
DIMENSIONS:		CHK K. THACKSTON	-			NAME		
mm	TOLERANCES UNLESS OTHERWISE SPECIFIED:	APVD K. THACKSTON	-	FEMALE GUIDE, RECEPTACLE FORTIS Zd METAL SHELL LRU				
	0 P/LC	±0.13		PRODUCT SPEC				
	2 P/LC	±0.05		108-2474				
	2 P/LC	±0.05		APPLICATION SPEC				
	4 P/LC	±0.25		408-10464				
ANGLES	±2°	FINISH		SIZE	CAGE CODE	DRAWING NO	RESTRICTED TO	
MATERIAL	PASSIVATED	WEIGHT		A1	00779C	2102503	-	
STAINLESS STEEL		Customer Drawing		SCALE		15:1	SHEET 1 OF 1	REV C