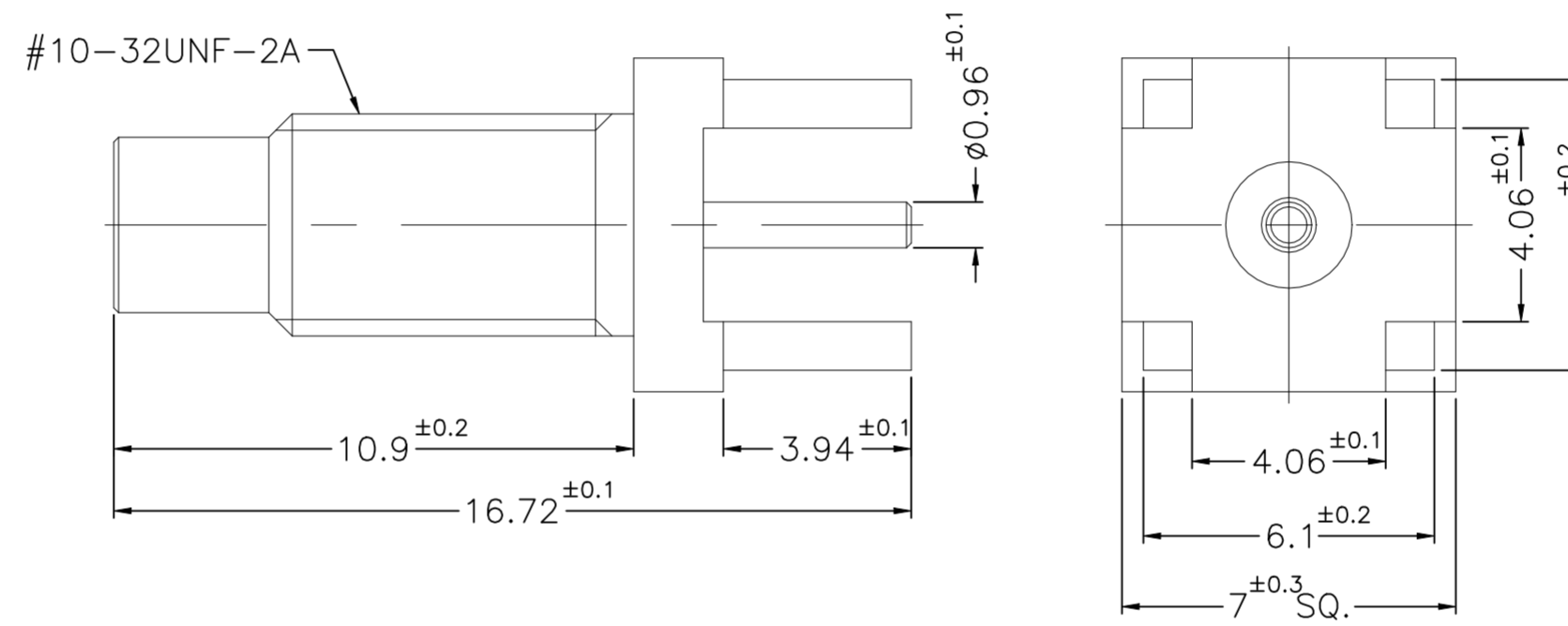
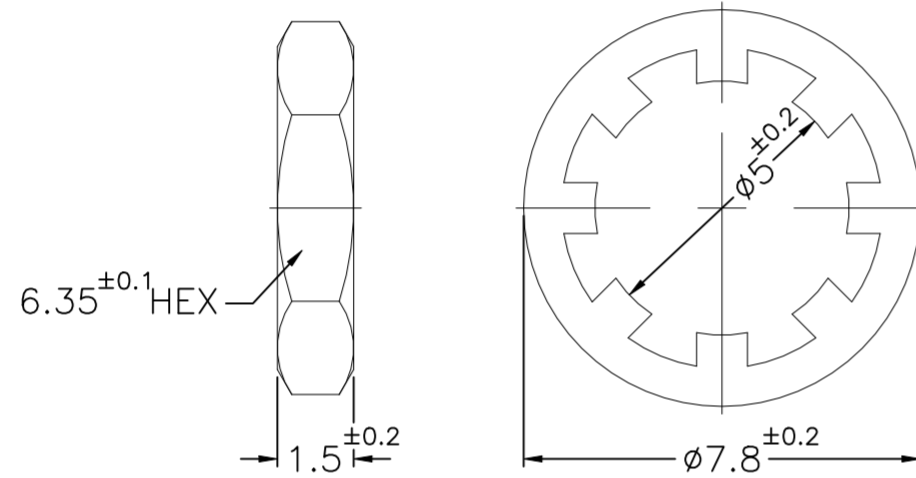
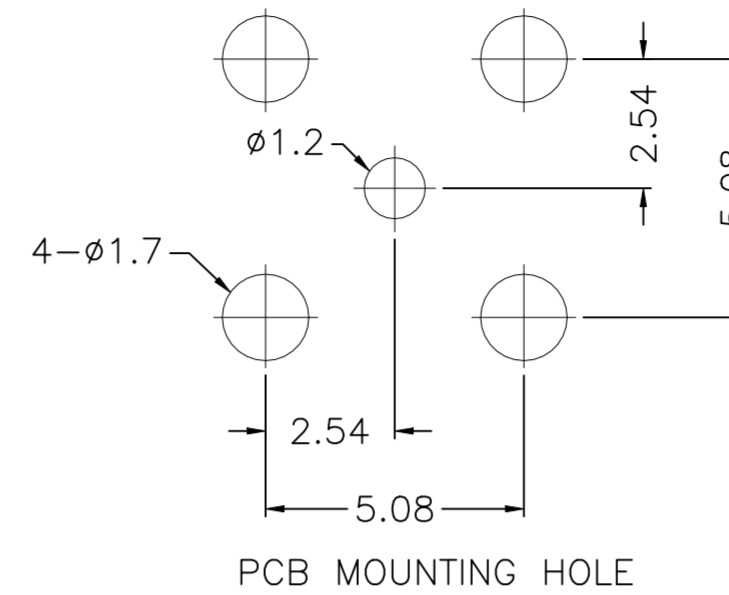


REVISIONS					
P	LTR	DESCRIPTION	DATE	DWN	APVD
A		ECN-24-261719 (GTP)	19APR2024	SS	WH



SPECIFICATIONS:

1. IMPEDANCE: 50Ω
2. FREQUENCY: DC to 10 GHz
3. VSWR/RL: 1.2(DC-10GHz)/ 20.83dB min.
4. CONTACT RESISTANCE:
CENTER: 6 milliohms max.
OUTER: 2.5 milliohms max.
5. TEMPERATURE RANGE: -65°C TO +165°C
6. DURABILITY: 500 cycles min.
7. ENGAGEMENT AND DISENGAGEMENT FORCE:
ENGAGEMENT: 0.3 N-m. max.
DISENGAGEMENT: 0.3 N-m. max.
8. ALL DIMENSION ARE NOMINAL FOR REFERENCE ONLY, UNLESS OTHERWISE STATED.
9. ROHS COMPLIANT

FINISH (PLATING THICKNESS IN MICRO-INCHES)

▲ THIN GOLD OVER NICKEL PL. 50 MIN. THICK OVER COPPER PL. 50 MIN. THICK

▲ GOLD PL. 30 MIN. THICK OVER NICKEL PL. 50 MIN. THICK OVER COPPER PL. 50 MIN. THICK

QTY	DESCRIPTION	MATERIAL	ITEM
1	▲ 1	BRASS	HEX NUT
1	▲ 1	BRASS	LOCK WASHER
1	▲ 2	BRASS	CONTACT PIN
1	NATURAL	PTFE	INSULATOR
1	▲ 1	BRASS	BODY
2477165-1	FINISH	MATERIAL	DESCRIPTION

THIS DRAWING IS A CONTROLLED DOCUMENT.		DWN 11MAR2024 SIDDHARTH SINGH														
DIMENSIONS: mm		CHK 11MAR2024 ERIC DAI														
TOLERANCES UNLESS OTHERWISE SPECIFIED:		APVD 11MAR2024 WENKE HE	NAME SMC Jack Str Panel Mnt Thru Hole 10 Ghz													
<table border="1"> <tr><td>0 PLC</td><td>± 0.3</td></tr> <tr><td>1 PLC</td><td>± 0.2</td></tr> <tr><td>2 PLC</td><td>± 0.1</td></tr> <tr><td>3 PLC</td><td>± -</td></tr> <tr><td>4 PLC</td><td>± -</td></tr> <tr><td>ANGLES</td><td>± 5</td></tr> </table>		0 PLC	± 0.3	1 PLC	± 0.2	2 PLC	± 0.1	3 PLC	± -	4 PLC	± -	ANGLES	± 5	PRODUCT SPEC 108-161209	SIZE A2	
0 PLC	± 0.3															
1 PLC	± 0.2															
2 PLC	± 0.1															
3 PLC	± -															
4 PLC	± -															
ANGLES	± 5															
MATERIAL		APPLICATION SPEC	CAGE CODE 00779	DRAWING NO C=2477165												
FINISH		WEIGHT	SCALE 1:1	SHEET 1 of 1												
		CUSTOMER DRAWING	RESTRICTED TO	REV A												