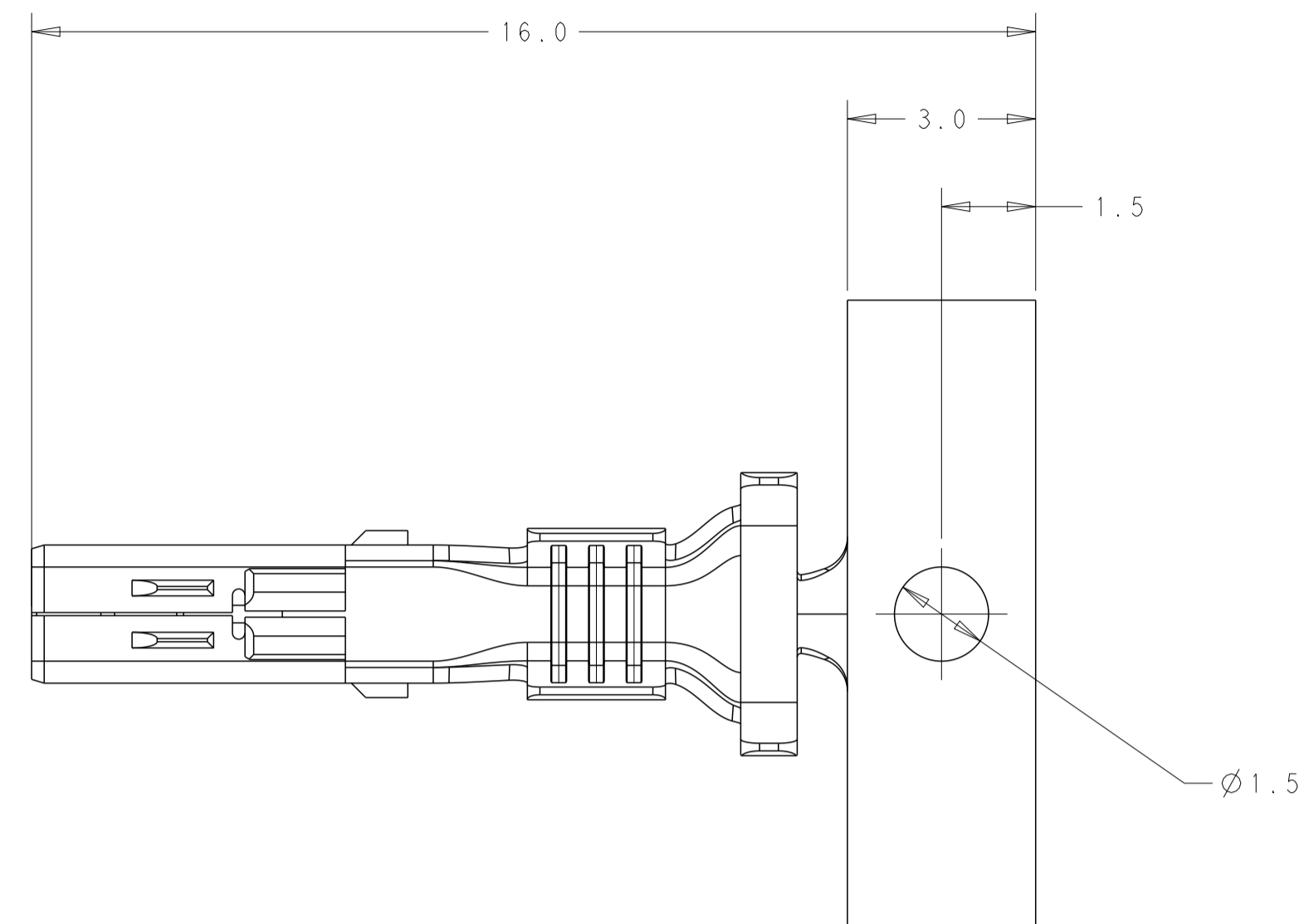
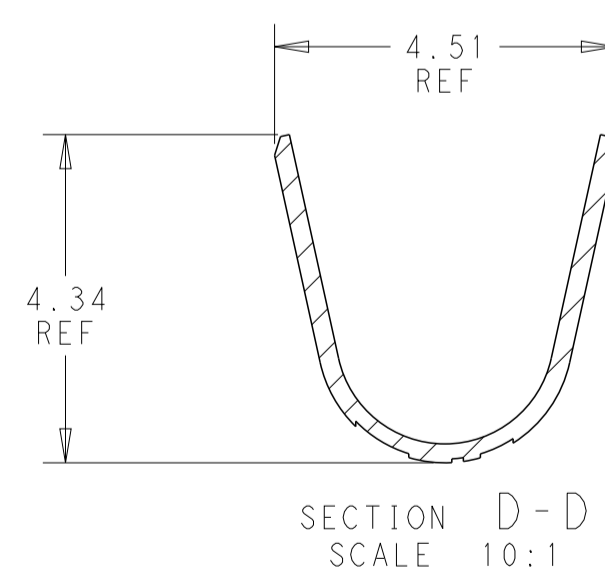
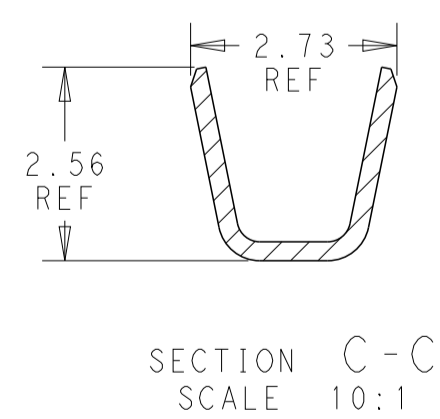
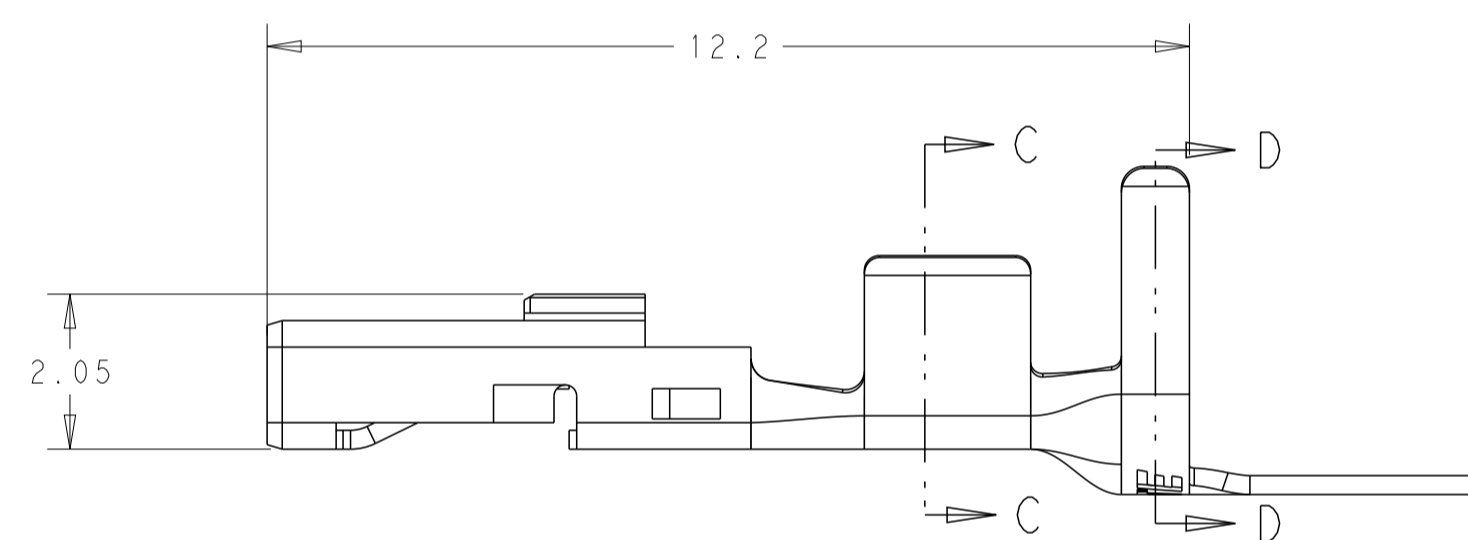
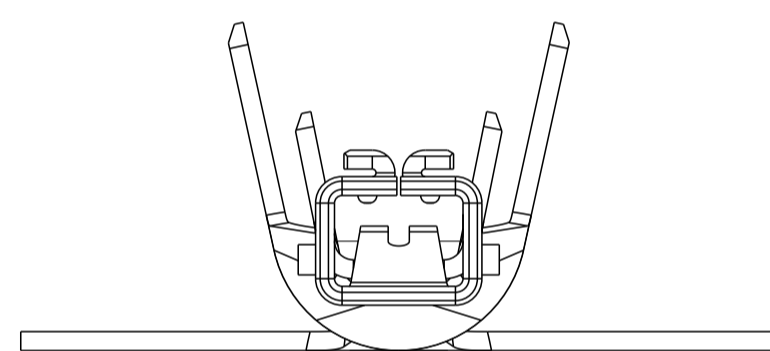


REVISIONS				
P	LTN	DESCRIPTION	DATE	APVD
A		REVISED PER ECN-24-276632	08AUG2024	DK CL



- 1 MATERIAL: SEE TABLE
- 2 RECOMMENDED MATING PART: 2391516-2, 2391516-3, 2391516-4, 1-2391516-2
- 3 PACKAGING: ON REEL
- 4 REFERENCE CRIMP INFORMATION:
WIRE RANGE: 16-18AWG COPPER STRANDED
INSULATION RANGE: 1.95-2.5mm



TIN PRE-PLATED	COPPER ALLOY, 0.25 THICK	2406091-1
FINISH	MATERIAL	PART NO

THIS DRAWING IS A CONTROLLED DOCUMENT.		DWN: 01DEC2023 RAMBALL SANTOSH	TE Connectivity	
DIMENSIONS: mm		CHK: 01DEC2023 OTTO CHEN	NAME: REC TERMINAL 16-18AWG, POWER DOUBLE LOCK	
TOLERANCES UNLESS OTHERWISE SPECIFIED:		APVD: 01DEC2023 DANIEL Z	PRODUCT SPEC: 108-160365	
0 PLC ±0.40		APPLICATION SPEC: 114-160773		
1 PLC ±0.30		SIZE: A CAGE CODE: - DRAWING NO: C=2406091		
2 PLC ±0.30		RESTRICTED TO: -		
3 PLC ±0.30		MATERIAL: SEE TABLE		
4 PLC ±0.30		WEIGHT: -		
ANGLES ±0.5°		CUSTOMER DRAWING		
FINISH: SEE TABLE		SCALE: 10:1 SHEET 1 OF 1 REV A		