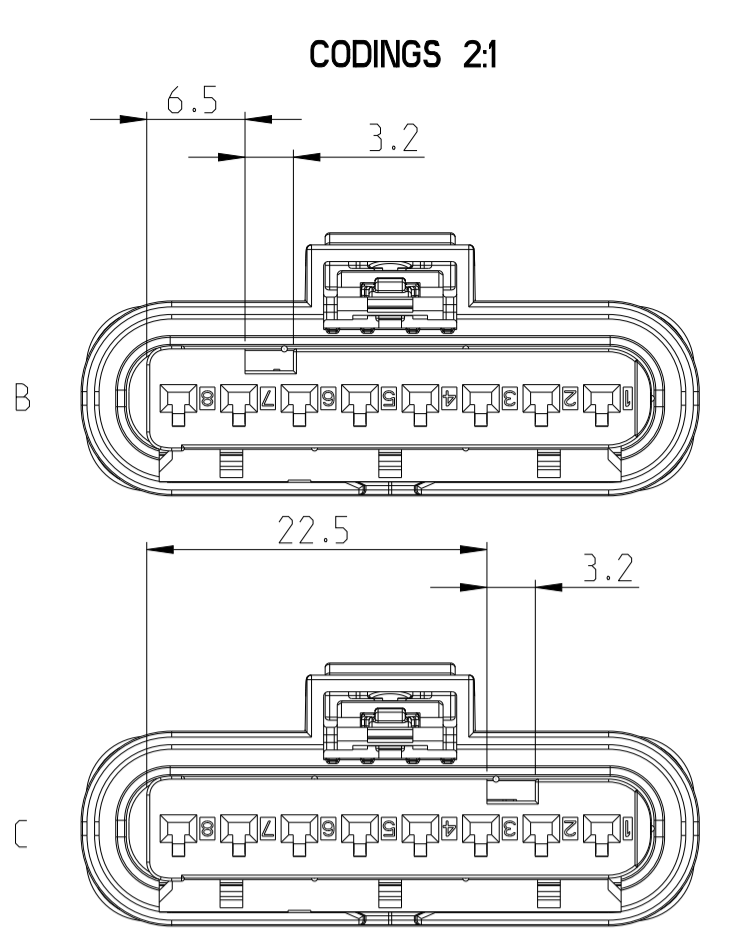
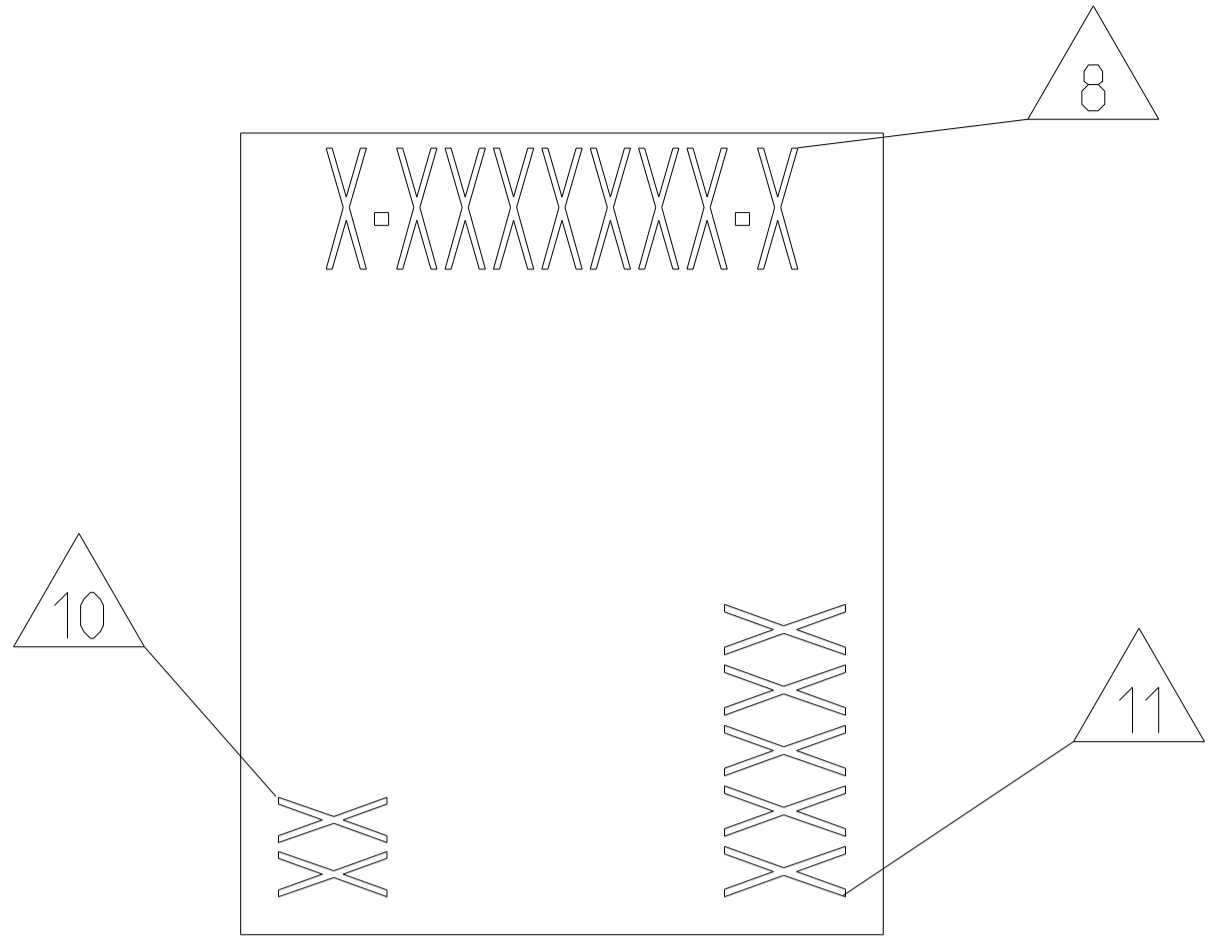
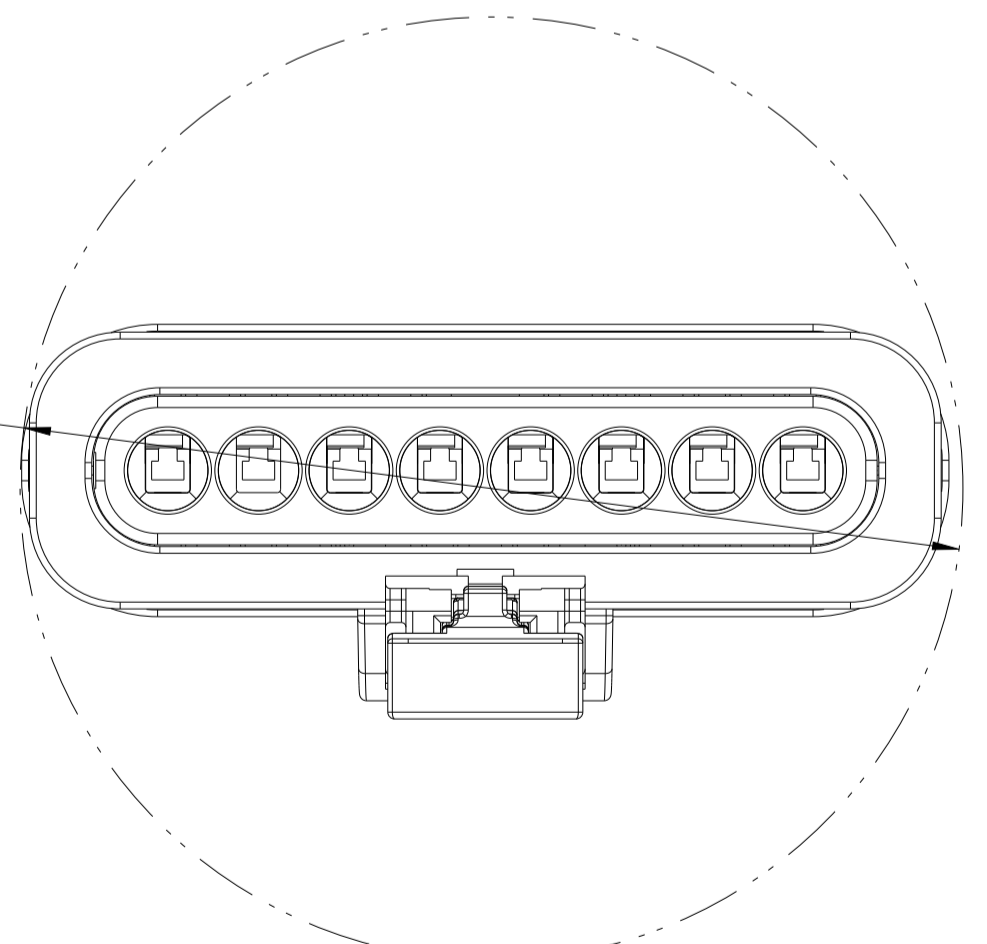
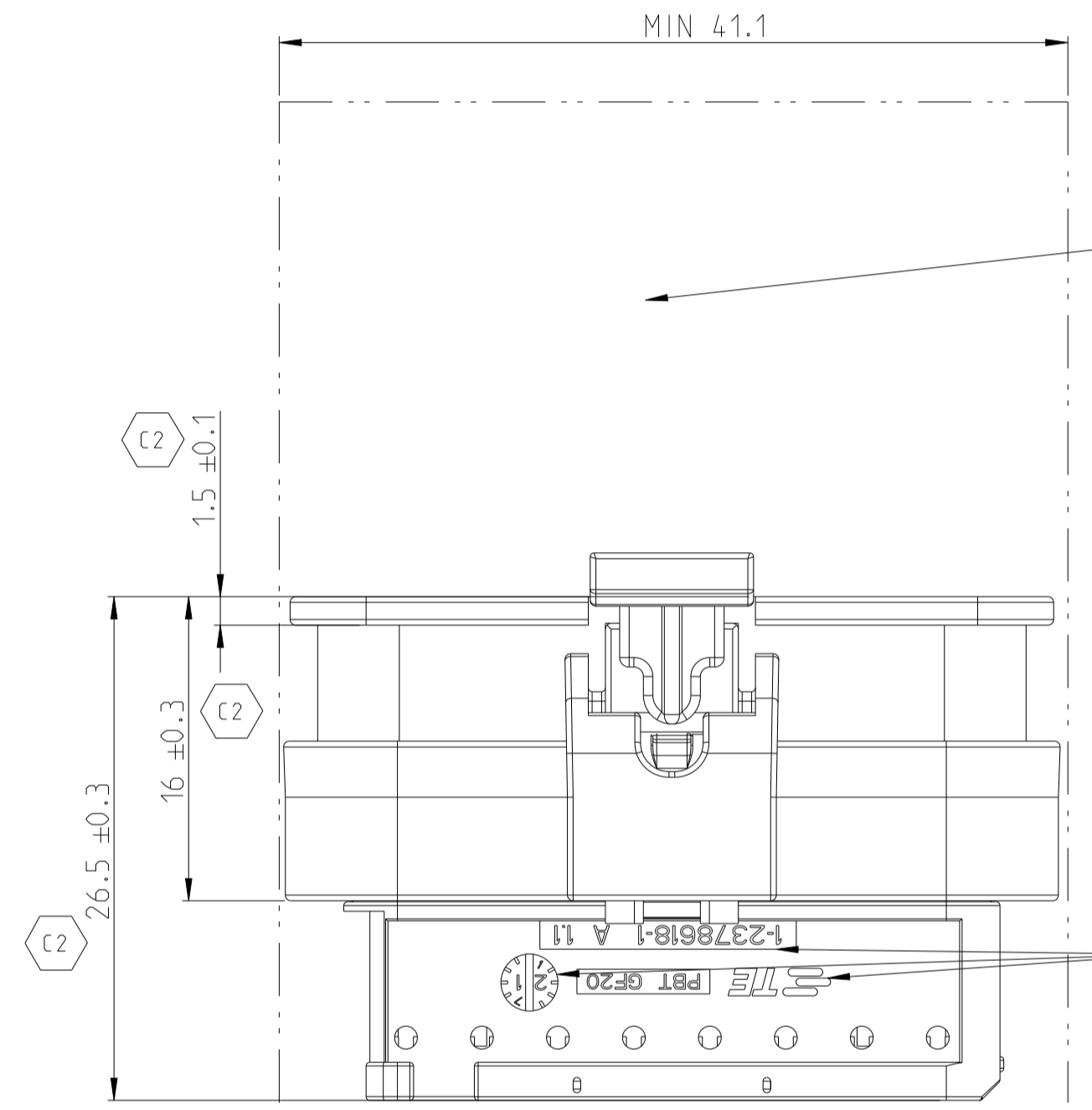
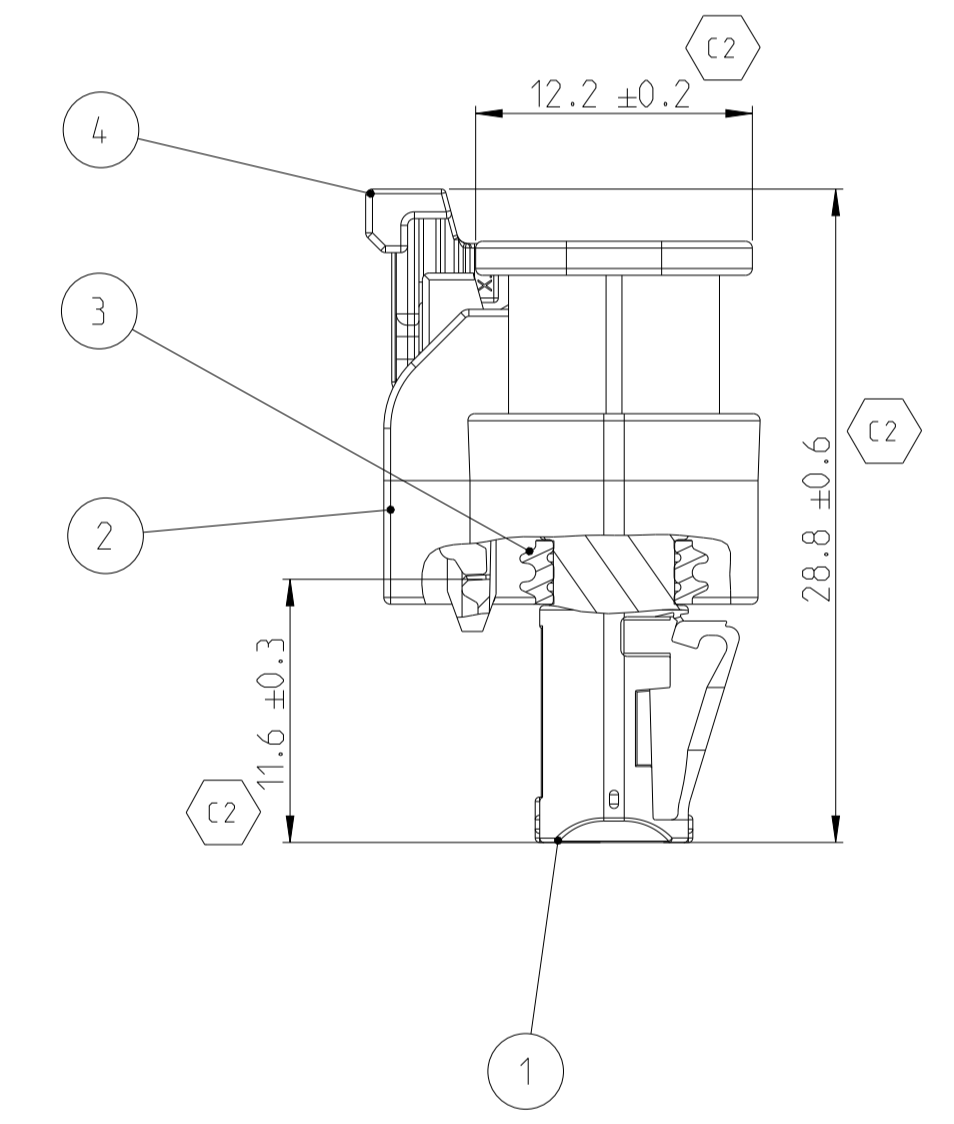
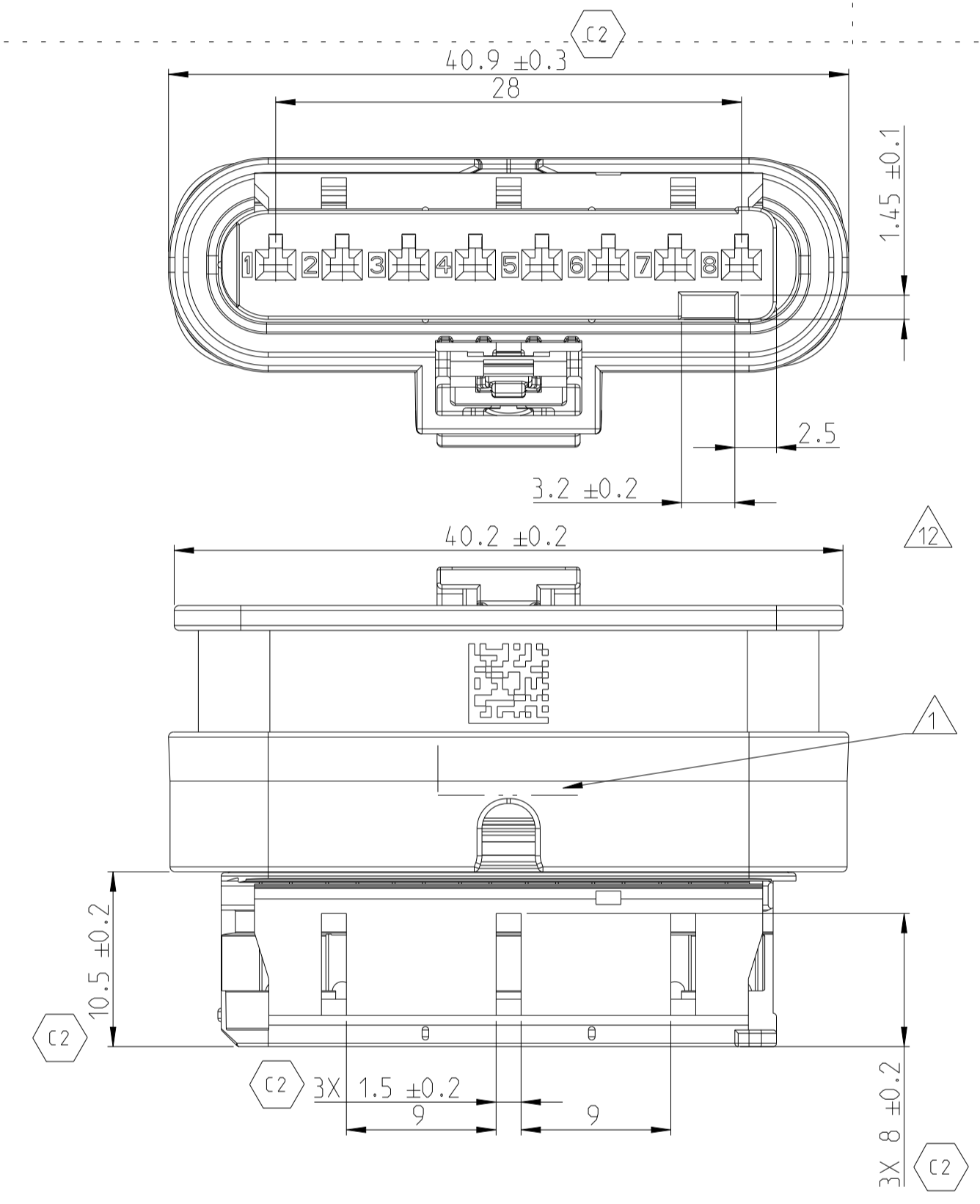
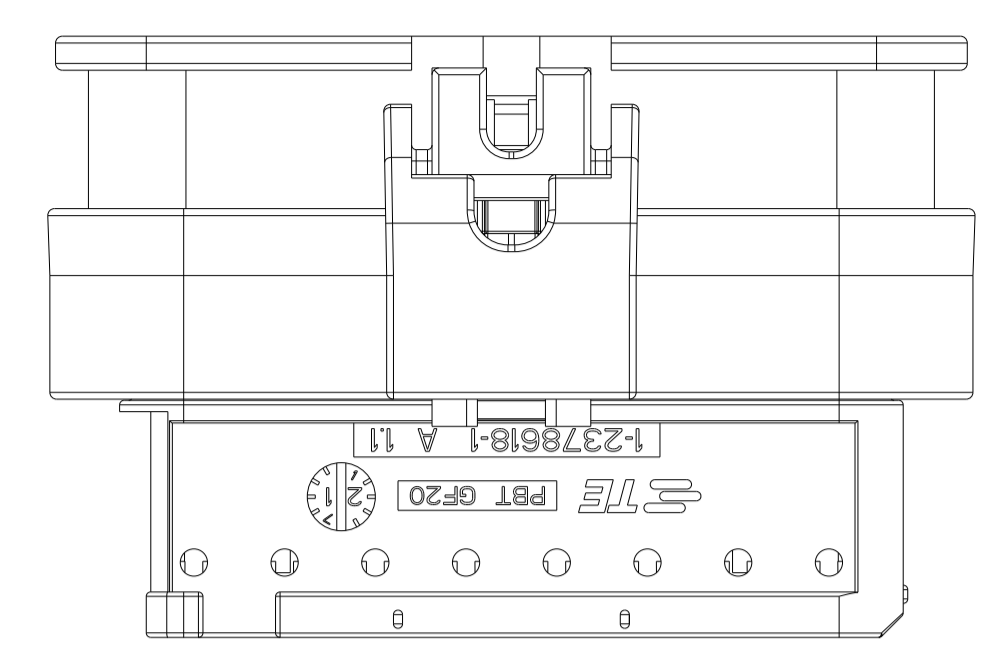
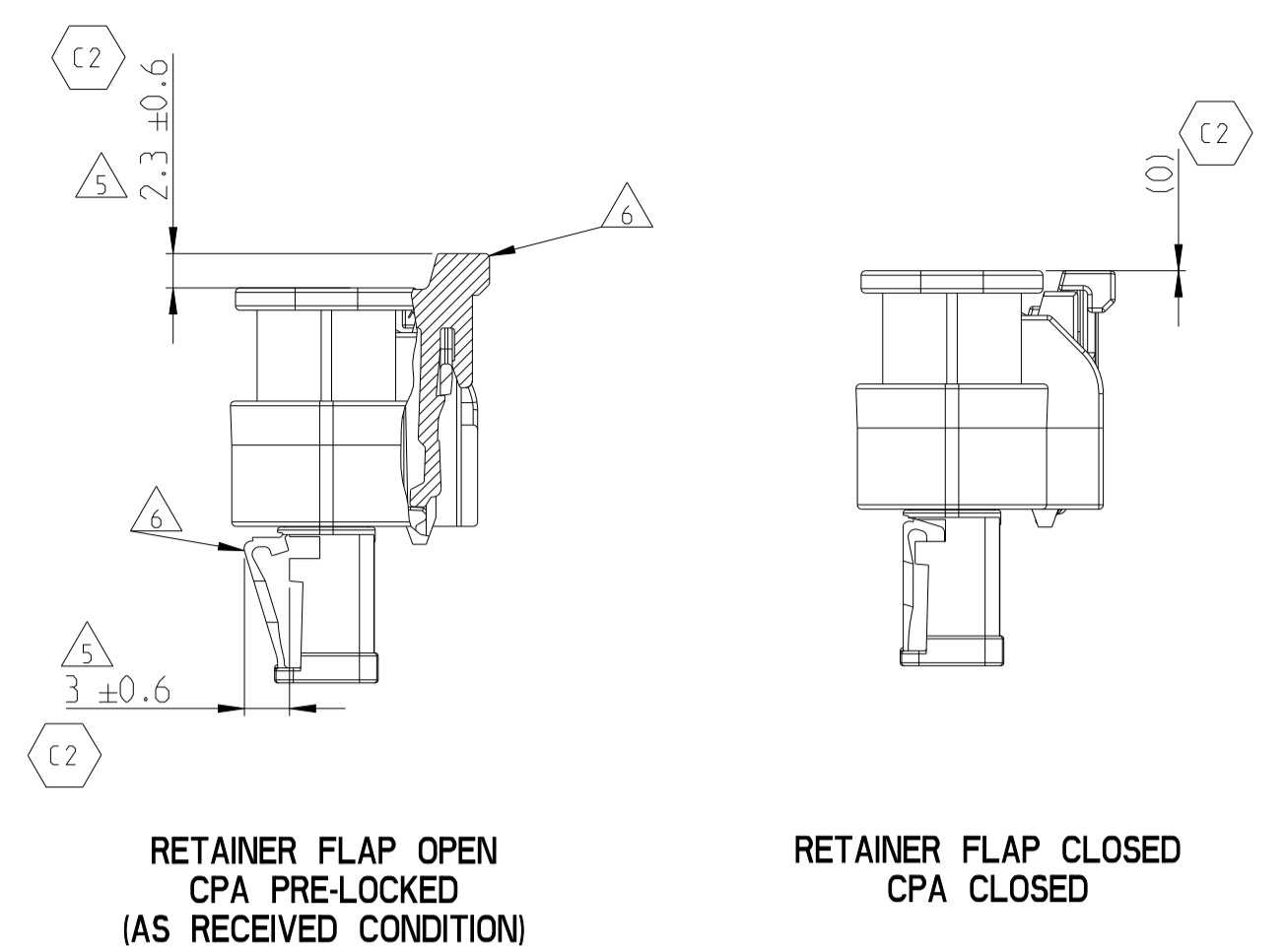


REVISIONS				
#	LT#	DESCRIPTION	DATE	APPV
C		CONNECTOR ROBUSTNESS IMPROVEMENT	09OCT2024	LSZ SZN
C1		INTRODUCTION OF NEW VARIANT	26NOV2024	LSZ SZN
C2		TOLERANCE CORRECTION	08AUG2025	GYR LSZ
C3		NOTE CORRECTION	08MAY2026	GYR SZN

1 LASER PRINT:



REATAINER FLAP OPEN VS CLOSED 2:1



NOTES:

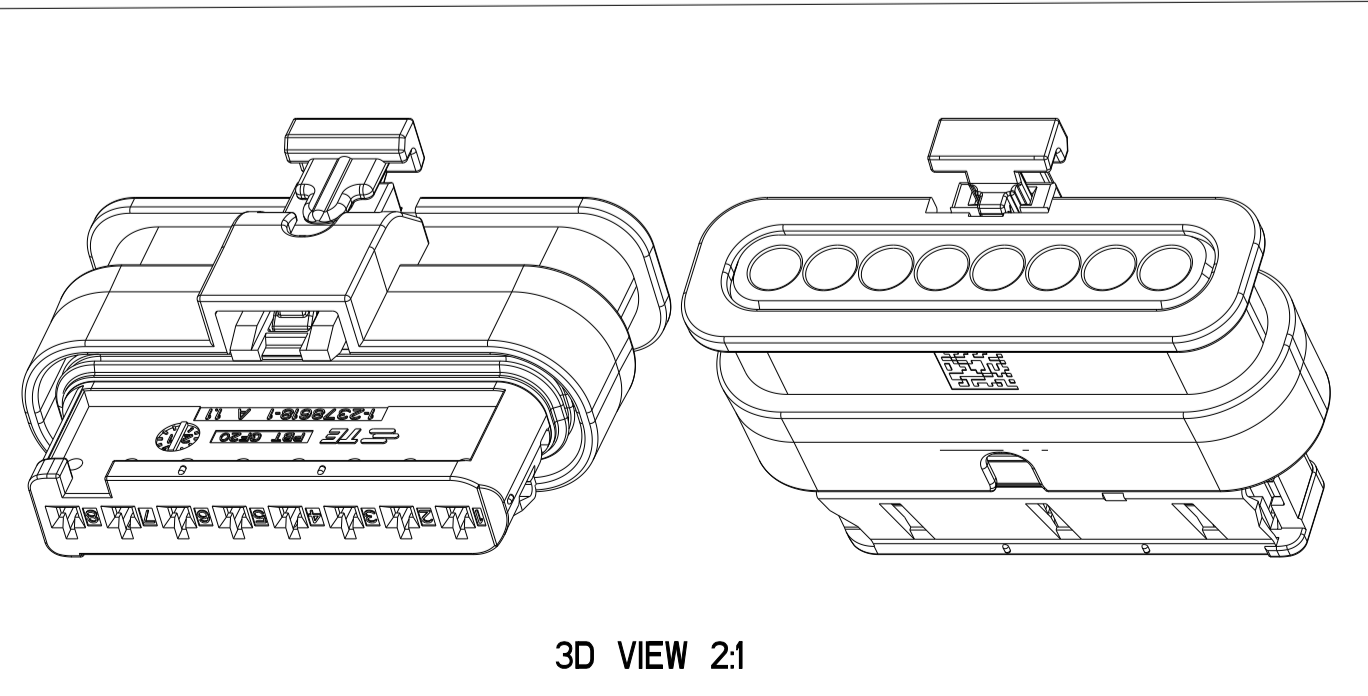
- 1 AREA FOR LASER PRINT
- 2 USABLE CONTACTS: MCON 1.2 LL - SINGLE WIRE SEAL CONTACTS SEE TE-NO. 1452674
- 3 SEE PRODUCT SPECIFICATION NO.108-18782 FOR THE FOLLOWING PRODUCT PROPERTIES:
 - MAX. WIRE SIZE RANGE PERMITTED
 - PERMISSIBLE CURRENT CARRYING CAPACITY OF THE SINGLE CONTACT
 - MAX OPERATING VOLTAGE
 - VIBRATION RESISTANCE
 - MAX OPERATING TEMPERATURE

MAX OPERATING TEMPERATURE 130°C
- 4 SUPPLIER-MARK (ONLY FOR TE CONNECTIVITY INTERNAL TRACKING)
- 5 SPACE OF ACTIVITY
- 6 SUPPLY CONDITION: CPA (4) AND RETAINER FLAP (1) IN PRELOCKED POSITION
- 7 WARPAGE PERMITTED TO MAX. -0.5mm
- 8 TE ORDER-NO.
- 9 ACCORDING TO INTERFACE DRAWING SEE TE-NO. 114-18679-3
- 10 ASSEMBLY LINE SEGMENT IDENTIFICATION
- 11 DATE CODE (DDYY)
- 12 QR CODE:
 - FIRST ROW: MANUFACTURING INFORMATION ONLY FOR TE CONNECTIVITY
 - SECOND ROW: TE.COM ONLINE CATALOG LINK FOR CUSTOMER
- 14 THE MARKING ON THE COMPONENTS MAY VARY IN THE SAME BATCH IT DOES NOT SERVE ANY FUNCTION IT IS ONLY USED FOR TE CONNECTIVITY INTERNAL TRACKING FOR VALID CUSTOMER TRACKING PLEASE USE THE LASER PRINT - SEE NOTE 1
- 15 PLEASE CARRY OUT THE CLEARANCE TEST FOR THE SOCKET HOUSING BASED ON THE WIRE SIZE USED
- 16 SECONDARY LOCK THAT HAVE BEEN CLOSED DURING TRANSPORT CAN BE MOVED BACK TO PRE-LOCKED POSITION ACCORDING TO INSTRUCTIONS FOUND IN THE APPLICATION SPEC. NO 114-94767
- 17 CONTACT TE SALES REPRESENTATIVE FOR ACTIVATION OF CROSSED OUT VERSIONS

1-2378608-1 AS SHOWN

REV	DESCRIPTION	MATERIAL	COLOUR	ITEM NO
-	NEXTGEN MCON 1.2 LL CPA	PBT-GF30	RED	4
1	8POS MCON 1.2 - SEAL	SILOPREN LSR	BLUE	3
1	8POS, NEXTGEN MCON 1.2 - PROTEC. COVER	PA6-GF15	BLACK	2
-	8POS NEXTGEN MCON 1.2 RECEPTACLE HSG. - COD C	PBT-GF20	BLUE	1
-	8POS NEXTGEN MCON 1.2 RECEPTACLE HSG. - COD B	PBT-GF20	BROWN	1
1	8POS NEXTGEN MCON 1.2 RECEPTACLE HSG. - COD A	PBT-GF20	BLACK	1
1-63-12-11-1				
C				

REVISION PARTS LIST



DIMENSIONS: mm TOLERANCES UNLESS OTHERWISE SPECIFIED ACC. TO DIN 16901-140@CENTRIC TO NOMINAL DIMENSION, EDITION 1982-11. SHALL APPLY. THIS DRAWING IS A CONTROLLED DOCUMENT.		DWN: 27APR2024 CHK: SZÉKELY LEHEL APV: NEMESZ SZILÁRD PRODUCT SPEC: 108-94874 APPLICATION SPEC: 114-94767 WEIGHT: - CUSTOMER DRAWING	
MATERIAL: SEE BOM		NAME: 8POS.NEXTGEN. MCON 1.2 LL REC.SLD SIZE: A 00779 C=2378608 SCALE: 3:1 SHEET 1 OF 1 REV: 3	