

4

3

2

1

THIS DRAWING IS UNPUBLISHED.

RELEASED FOR PUBLICATION

20

© COPYRIGHT 20 BY -

ALL RIGHTS RESERVED.

REVISIONS

P	LTR	DESCRIPTION	DATE	DWN	APVD
	A	RELEASE PER ECO-20-003857	16MAR2020	DFS	DFS
	A1	RELEASED PER PCN-24-206607	15APR2024	MK	BC

$\varnothing 25.4 \pm 1.00$

36.70 ± 0.50

19.45 ± 0.50

SECTION B-B

NOTES:

1. MATERIALS:

ADAPTER HOUSING:
 GENERIC TYPE = NYLON GF30%
 COLOR = BLACK

TERMINALS:
 BASE MAT'L = COPPER ALLOY
 MATING INTERFACE = SILVER OVER NICKEL

FLANGE SEAL:
 GENERIC TYPE = SILICONE RUBBER
 COLOR = YELLOW

2. REFERENCE TO DRAWING 2295114 FOR CONNECTOR INTERFACE DIMENSIONS.

3. OPERATING TEMPERATURE = -40°C TO $+125^{\circ}\text{C}$

4. THIS PART MATES WITH 2-WAY PLUG, P/N 2292906-X.
 SEE SHEET 2 FOR KEYING ARRANGEMENTS.

5. THIS PART MUST USE MOUNTING CLIP, P/N 2325098-X
 (SOLD SEPARATELY) FOR PROPER SEALING AND RETENTION
 WHEN ASSEMBLED TO A PANEL.

6. ADAPTER NOT SEALED IN THE UNMATED STATE.


7. HIGH PRESSURE SPRAY FROM CLIP SIDE ONLY.

8. NOT RELEASED FOR PRODUCTION

FLANGE SEAL

HOUSING

ISOMETRIC VIEWS SHOWN FOR REFERENCE ONLY

THIS DRAWING IS A CONTROLLED DOCUMENT.		DWN RAGHAV SATHISH 28MAR2018	 TE Connectivity	
DIMENSIONS: mm		CHK D.F. STACK 28MAR2018		
TOLERANCES UNLESS OTHERWISE SPECIFIED:		APVD D. KLEIN 13MAR2020	NAME ADAPTER, 2POS, 1.2X0.6, PIN HSG ASSY enetSEAL+	
0 PLC \pm -		PRODUCT SPEC 108-151045	SIZE A3	
1 PLC \pm -		APPLICATION SPEC 114-151045	CAGE CODE -	DRAWING NO C-2325106
2 PLC \pm -		WEIGHT -	RESTRICTED TO -	
3 PLC \pm -		CUSTOMER DRAWING	SCALE 5:1	SHEET 1 OF 5
4 PLC \pm -			REV A1	
ANGLES $\pm 2^{\circ}$				
FINISH -				
MATERIAL SEE NOTE 1				

1470-19 (3/13)

THIS DRAWING IS UNPUBLISHED.

RELEASED FOR PUBLICATION

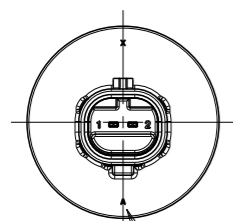
20

© COPYRIGHT 20 BY -

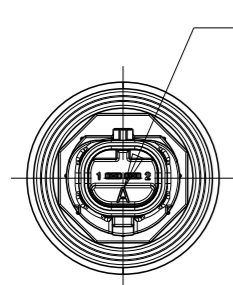
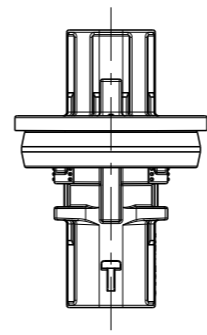
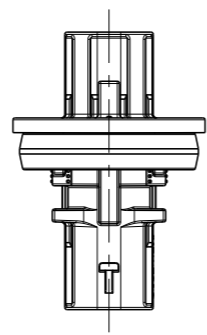
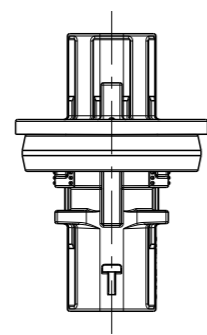
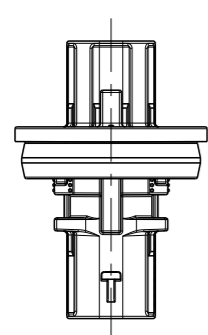
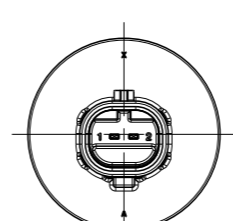
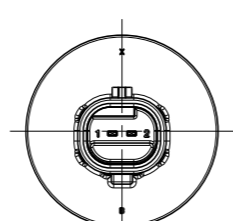
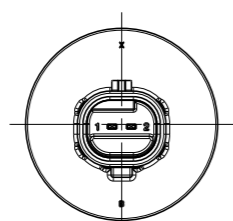
ALL RIGHTS RESERVED.

REVISIONS

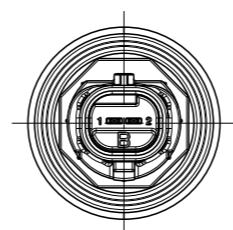
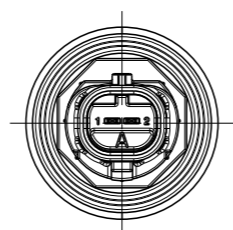
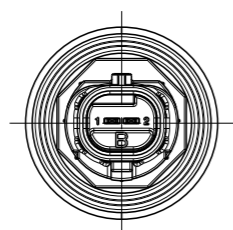
P	LTR	DESCRIPTION	DATE	DWN	APVD
-	-	SEE SHEET 1	-	-	-



KEY ID
FLANGE SIDE



KEY ID
CLIP SIDE



2325106-1
(KEY A-A)

2325106-2
(KEY B-B)

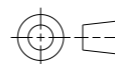
2325106-4
(KEY A-B)

2325106-8
(KEY B-A)



THIS DRAWING IS A CONTROLLED DOCUMENT.

DIMENSIONS:
mm



TOLERANCES UNLESS OTHERWISE SPECIFIED:

- 0 PLC ±-
- 1 PLC ±-
- 2 PLC ±-
- 3 PLC ±-
- 4 PLC ±-
- ANGLES ±2°
- FINISH -

MATERIAL
SEE NOTE 1

DWN 28MAR2018

RAGHAV SATHISH

CHK 28MAR2018

D.F. STACK

APVD 13MAR2020

D. KLEIN

PRODUCT SPEC

108-151045

APPLICATION SPEC

114-151045

WEIGHT

-

CUSTOMER DRAWING



TE Connectivity

NAME
ADAPTER, 2POS, 1.2X0.6, PIN HSG ASSY
enetSEAL+

SIZE	CAGE CODE	DRAWING NO	RESTRICTED TO
------	-----------	------------	---------------

A3	-	©-2325106	-
----	---	-----------	---

SCALE	SHEET	REV
2:1	2 OF 5	A1

THIS DRAWING IS UNPUBLISHED.

RELEASED FOR PUBLICATION 20


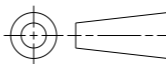
© COPYRIGHT 20 BY - ALL RIGHTS RESERVED.

REVISIONS

P	LTR	DESCRIPTION	DATE	DWN	APVD
	-	SEE SHEET 1	-	-	-

ADDITIONAL NOTES REGARDING PANEL/ENCLOSURE FITMENT:

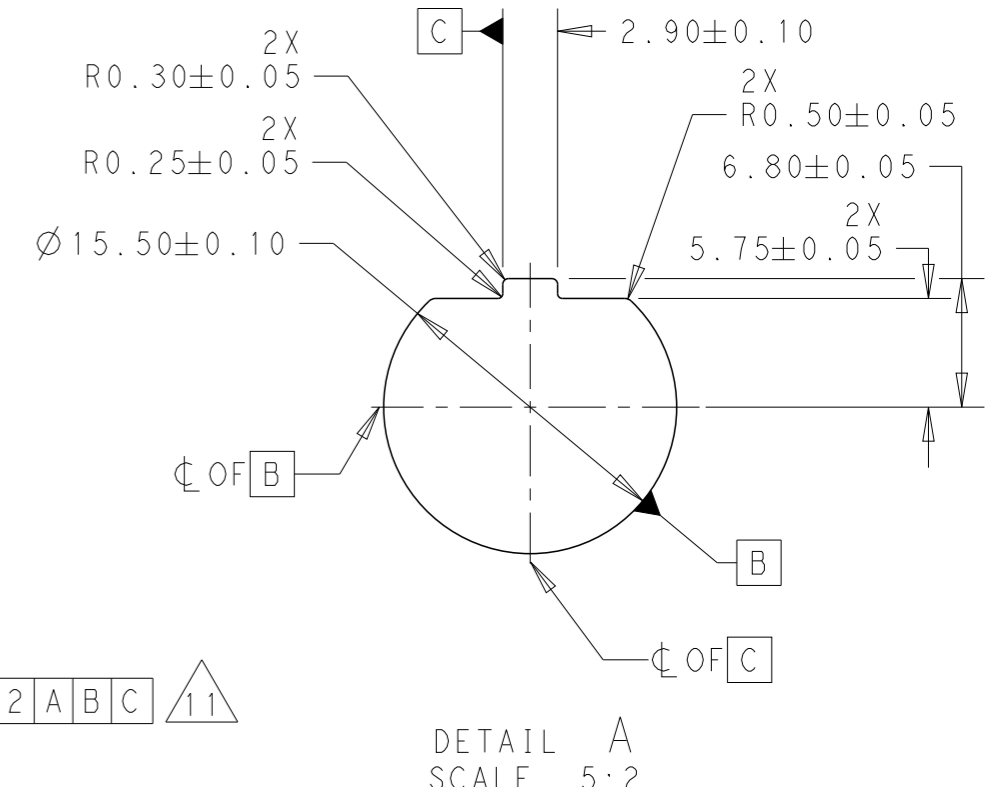
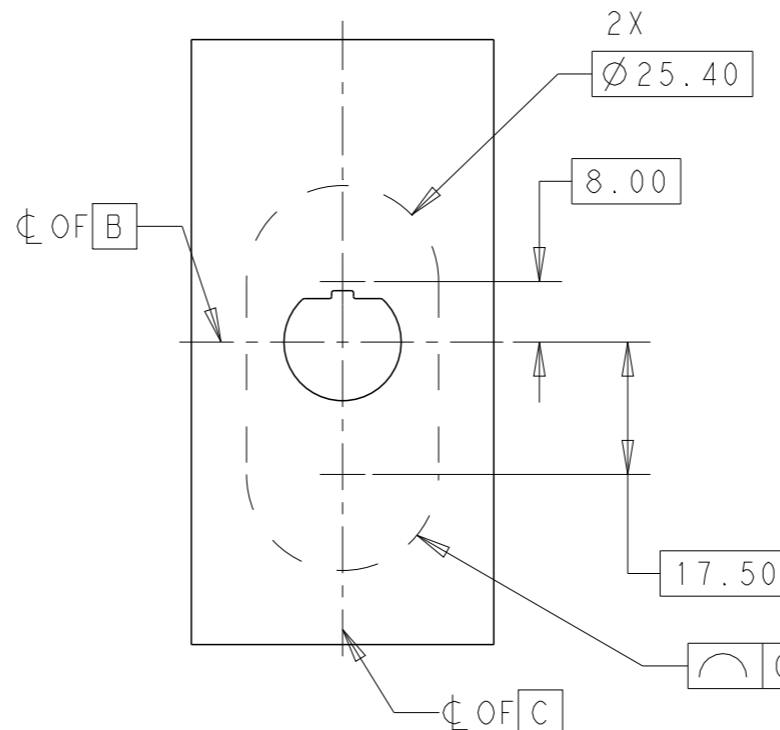
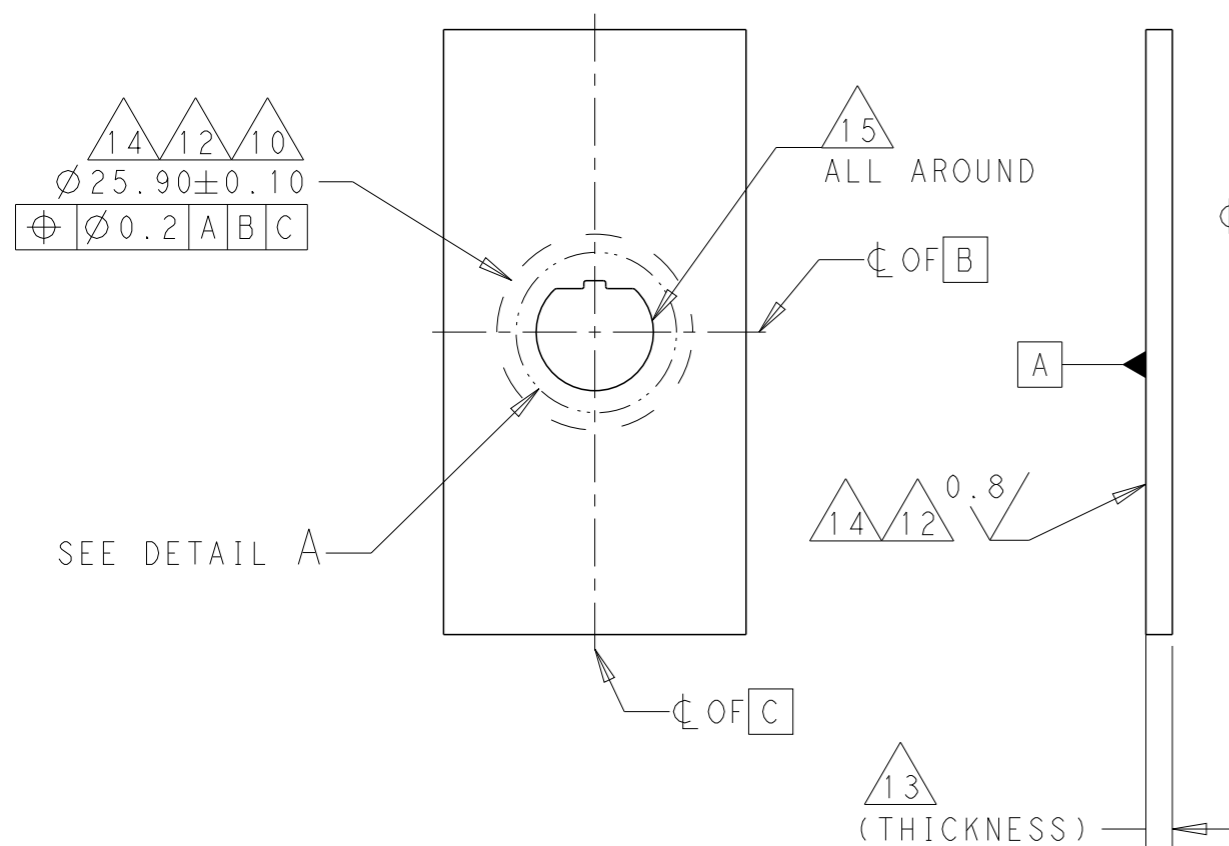
- 10. RECOMMENDED KEEP OUT REGION TO ENSURE PROPER ASSEMBLY TO PANEL/ENCLOSURE.
- 11. RECOMMENDED KEEP OUT REGION TO ENSURE PROPER CLIP ASSEMBLY.
- 12. SURFACE FINISH REQUIREMENT APPLIES WITHIN KEEPOUT REGION.
- 13. THICKNESS BETWEEN KEEP OUT REGIONS MUST MEET THICKNESS REQUIREMENT FOR SPECIFIC MOUNTING CLIP TO BE USED PER TE CUSTOMER DRAWING 2325098.
- 14. SEALING SURFACE, NO BURRS, SCRATCHES OR TOOL MARKS ALLOWED.
- 15. REMOVE SHARP EDGES. R0.5MM MAX.
- 16. X BASIC AND Y BASIC TO BE DEFINED BY THE CUSTOMER.


THIS DRAWING IS A CONTROLLED DOCUMENT.		DWN 28MAR2018 RAGHAV SATHISH	 TE Connectivity	
DIMENSIONS: mm		CHK 28MAR2018 D.F. STACK		
		APVD 13MAR2020 D. KLEIN	NAME ADAPTER, 2POS, 1.2X0.6, PIN HSG ASSY enetSEAL+	
TOLERANCES UNLESS OTHERWISE SPECIFIED: 0 PLC ±- 1 PLC ±- 2 PLC ±- 3 PLC ±- 4 PLC ±- ANGLES ±2°		PRODUCT SPEC 108-151045	RESTRICTED TO	
MATERIAL SEE NOTE 1		APPLICATION SPEC 114-151045	SIZE A3	CAGE CODE -
FINISH -		WEIGHT -	DRAWING NO C-2325106	REV A1
-		CUSTOMER DRAWING	SCALE 5:1	SHEET 3 OF 5

REVISIONS

P	LTR	DESCRIPTION	DATE	DWN	APVD
-	-	SEE SHEET 1	-	-	-

RECOMMENDED ENCLOSURE GEOMETRY FOR ASSEMBLIES
2325106-X

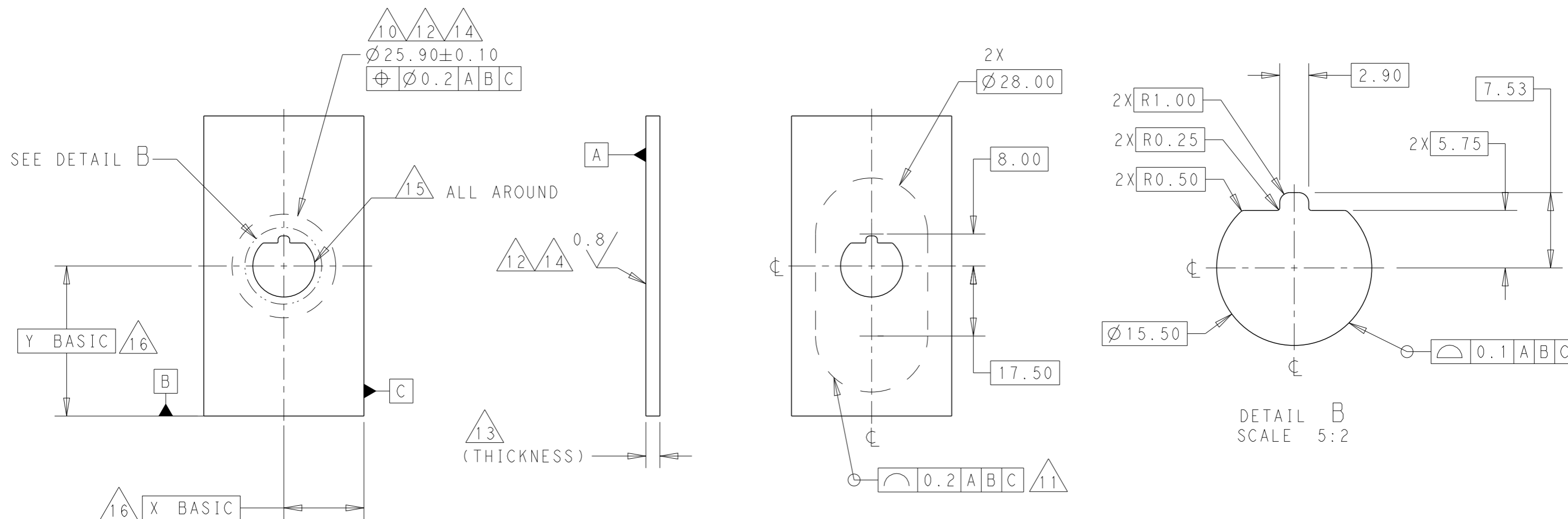



THIS DRAWING IS A CONTROLLED DOCUMENT.		DWN 28MAR2018 RAGHAV SATHISH	 TE Connectivity	
DIMENSIONS: mm		CHK 28MAR2018 D.F. STACK		
TOLERANCES UNLESS OTHERWISE SPECIFIED:		APVD 13MAR2020 D. KLEIN	NAME ADAPTER, 2POS, 1.2X0.6, PIN HSG ASSY enetSEAL+	
0 PLC ±-		PRODUCT SPEC 108-151045	SIZE A3	
1 PLC ±-		APPLICATION SPEC 114-151045	CAGE CODE -	DRAWING NO C=2325106
2 PLC ±-		WEIGHT -	RESTRICTED TO -	
3 PLC ±-		CUSTOMER DRAWING	SCALE 5:1	SHEET 4 OF 5
4 PLC ±-				REV A1
ANGLES ±2°				
FINISH SEE NOTE 1				

REVISIONS

P	LTR	DESCRIPTION	DATE	DWN	APVD
-	-	SEE SHEET 1	-	-	-

ALTERNATE RECOMMENDED ENCLOSURE GEOMETRY FOR ASSEMBLIES
2325106-X



THIS DRAWING IS A CONTROLLED DOCUMENT.		DWN 28MAR2018 RAGHAV SATHISH	 TE Connectivity	
DIMENSIONS: mm		CHK 28MAR2018 D.F. STACK		
TOLERANCES UNLESS OTHERWISE SPECIFIED:		APVD 13MAR2020 D. KLEIN	NAME ADAPTER, 2POS, 1.2X0.6, PIN HSG ASSY enetSEAL+	
0 PLC ±-		PRODUCT SPEC 108-151045	SIZE A3	
1 PLC ±-		APPLICATION SPEC 114-151045	CAGE CODE -	DRAWING NO C-2325106
2 PLC ±-		WEIGHT -	RESTRICTED TO -	
3 PLC ±-		CUSTOMER DRAWING	SCALE 5:1	SHEET 5 OF 5
4 PLC ±-			REV A1	
ANGLES ±2°				
FINISH -				
MATERIAL SEE NOTE 1				