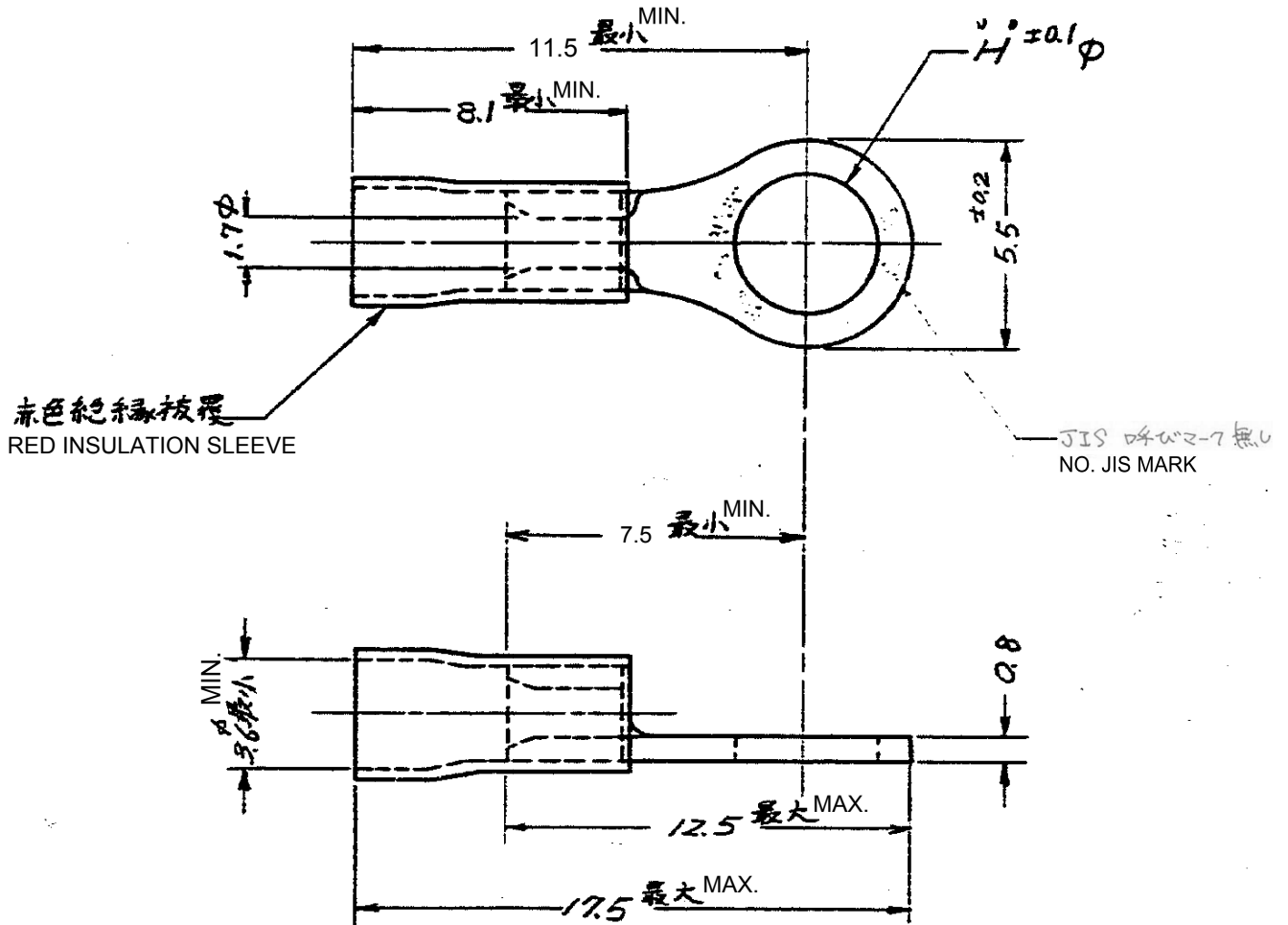


C-170780



PARTS NUMBER	CUSTOMER(JAPAN RAILWAY) SPEC	DIMENSION H	
170780-1	ED 564465. PS 125-3	3.35	<del>マーク</del> <del>125-3</del>

単位: 全 DIMENSIONS IN MM. DO NOT SCALE PRINT

G1	REVISED PER ECR-25-253648	SA	MDP	13AUG 2025
G	REVISED PER ECR-17-017886	E.T	N.Y	08DEC17
F	REVISED PER ECR-17-007891	T.G	N.Y	01MAY17
E	Change Applicable Body	Y.O	N.Y	23JAN17
D	ADDED MATL. FINISH	SA	M.K	11/19/17
C	ADDED DIM'S	SA	M.N	2/16/18
B	ADDED MARK	H.S	M.N	8/10/15
A	REVISED (REV. A)	H.S	M.N	7/1/15
D	RELEASED	H.S	M.N	11/10/17
4	LTR 変更 (REVISION RECORD)	DR.	CHK.	DATE
C	DR. <i>T. Orai</i> 11/10/17	DE		
	CHK. <i>M. Yoshida</i> 11/20/17	APP.		

1975 BY AMP JAPAN, LTD. ALL RIGHTS RESERVED. AMP PRODUCTS COVERED BY PATENTS AND OR PATENTS PENDING

参考図面 (CUSTOMER COPY REFERENCE ONLY)

MATERIAL: COPPER 電気銅  
FINISH: 焼鈍. 銅めっき ANNEAL TIN PLATING

WIRE RANGE: 0.26~1.04 mm AWG 22-18  
INSULATION DIA.: プラスティ・グッド

TE Connectivity

CLASS: 丸型 RING  
TYPE: PLASTI-GRID プラスティ・グッド

SCALE: 1:1  
LOC: JAC-170780  
REV: G1

PG RING TERMINAL 絶縁被覆端子